

STEP: 1

**DO NOT CEMENT POSTS INTO PLACE
UNTIL THE ENTIRE STRUCTURE IS
ASSEMBLED.**

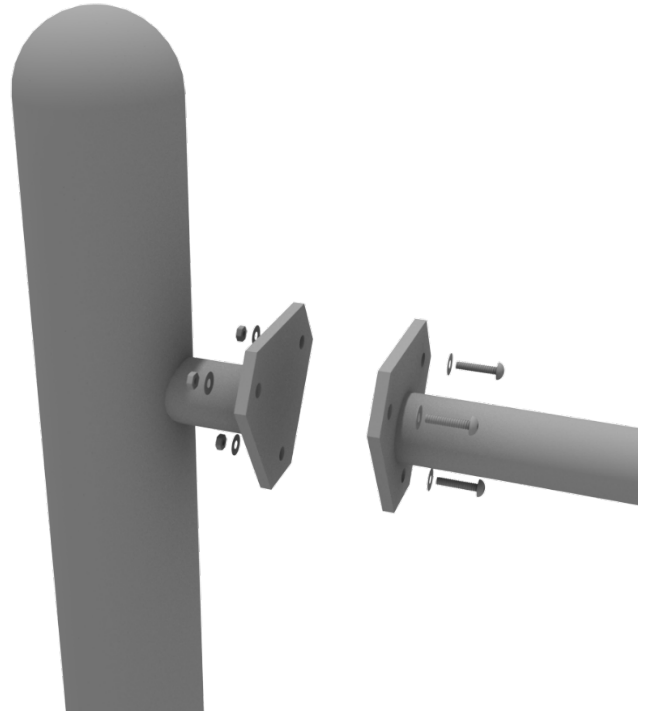
Refer to the General Installation
guide footing information and dig
proper holes for the support posts.



Get Physical Series – Standard Attachment Point Installation

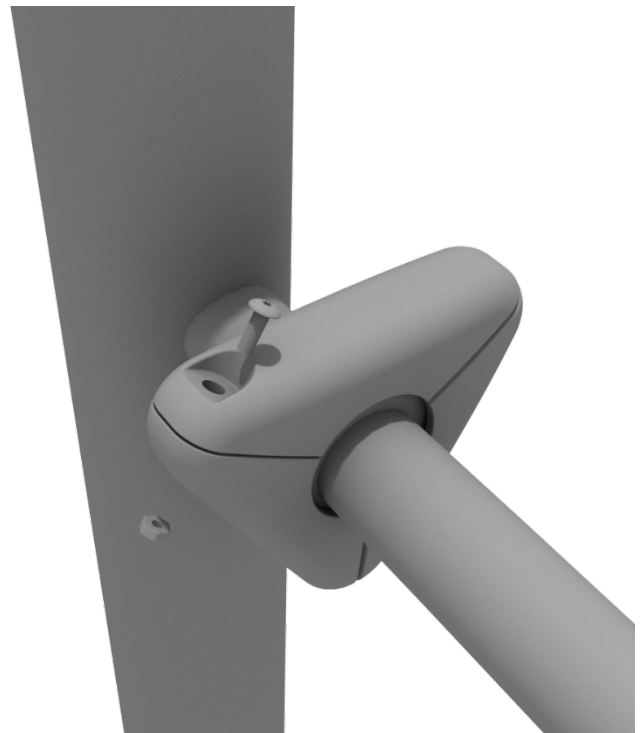
STEP: 1

Most components of a Get Physical series structure attach using this standard attachment point. Use three (3) M10*25 bolts, six (6) M10 washers, and three (3) M10 lock nuts.



STEP: 2

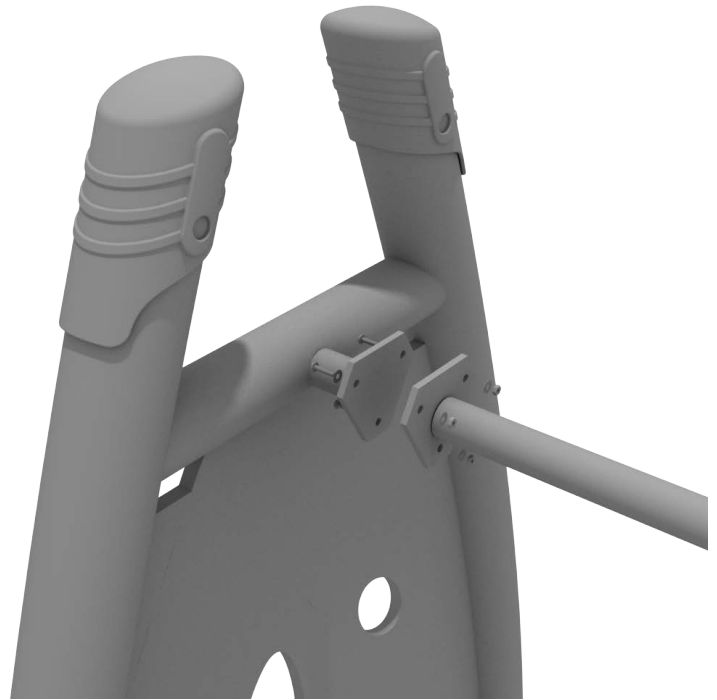
Each of these attachment points has a rubber cover to protect the bolts. Attach the cover and secure using the pre-attached M8*40 bolt and M8 lock nut.



Get Physical Series – Standard Attachment Point Installation

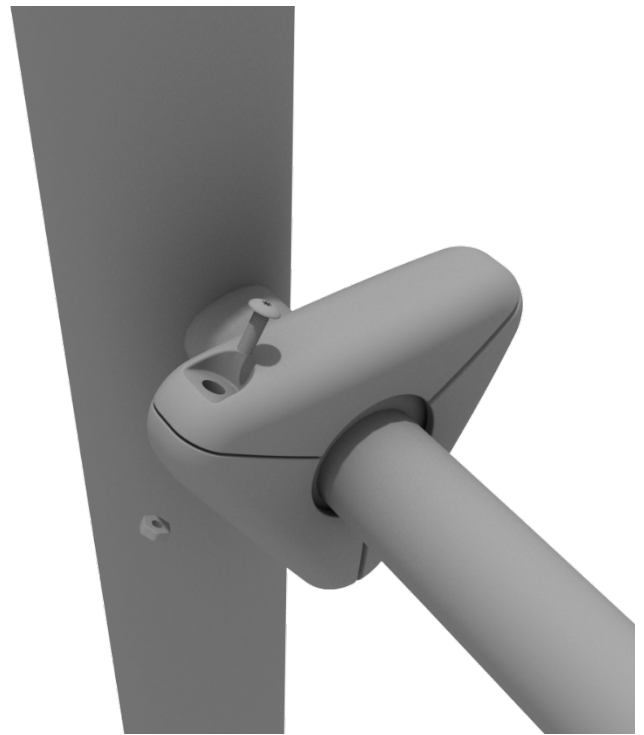
STEP: 1

Most components of a Get Physical series structure attach using this standard attachment point. Use three (3) M10*25 bolts, six (6) M10 washers, and three (3) M10 lock nuts.



STEP: 2

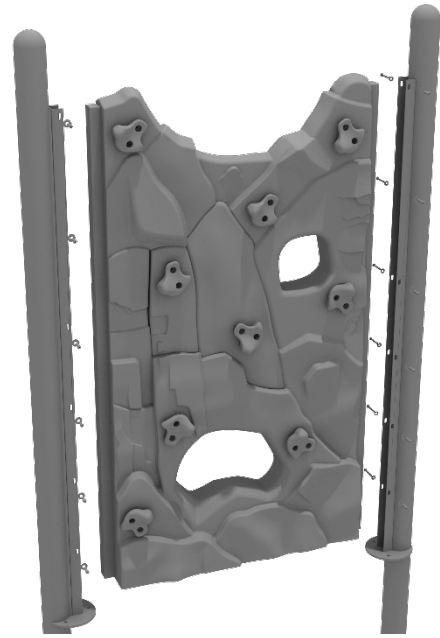
Each of these attachment points has a rubber cover to protect the bolts. Attach the cover and secure using the pre-attached M8*40 bolt and M8 lock nut.



STEP: 1

Refer to the General Installation Instructions footing section for information on climber footings.

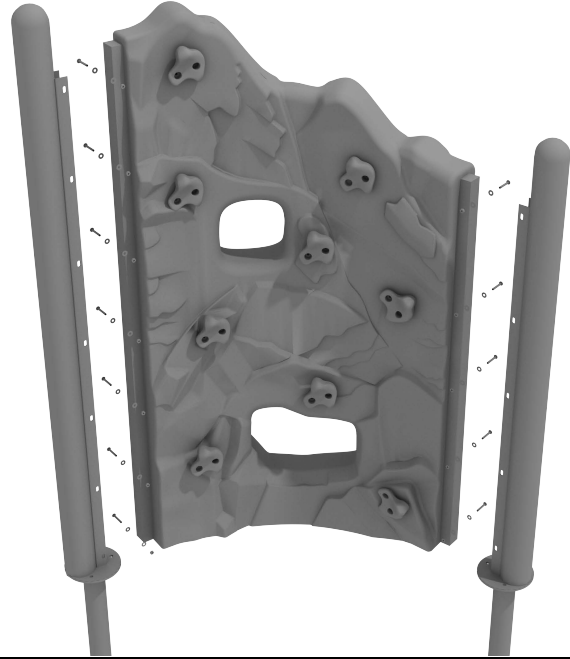
The Craggy Climber Straight Section attaches on both ends. Each connection point uses seven (7) M12 barrel nuts, seven (7) M8*60 bolts, seven (7) M12 washers, and seven (7) M8 washers.



STEP: 1

Refer to the General Installation Instructions footing section for information on climber footings.

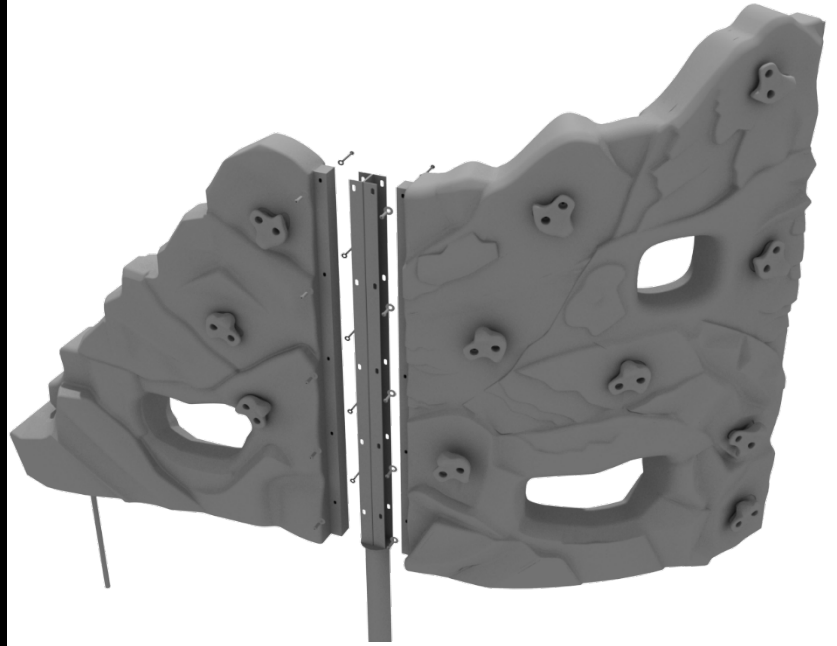
The Craggy Climber Turn Section attaches on both ends. The taller connection point uses seven (7) M12 barrel nuts, seven (7) M8*60 bolts, seven (7) M12 washers, and seven (7) M8 washers. The shorter connection point uses five (5) M12 barrel nuts, five (5) M8*60 bolts, five (5) M12 washers, and five (5) M8 washers.



Craggy Climber End Installation

STEP: 1

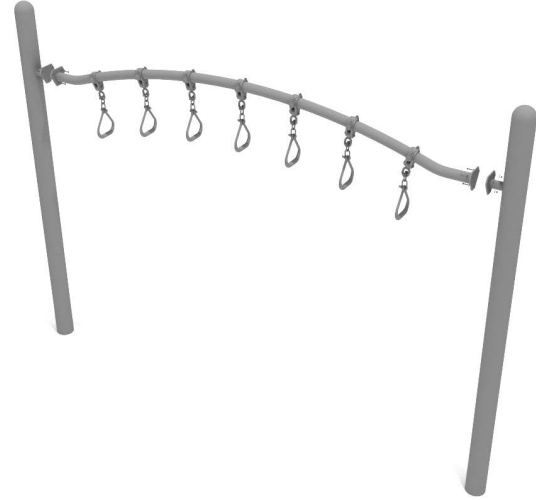
Then, using the craggy climber short bracket, connect the craggy end section to the curved craggy section using ten (10) M12 bolts, ten (10) M8*60 inner hex screws, ten (10) M12 washers, and ten (10) M8 washers.



Overhead Curved Swinging Ring Ladder Installation

Attach the Overhead Swinging Ring Ladder to the designated posts by connect half of the tube clamp to the ladder using one (1) M8*30 bolt.

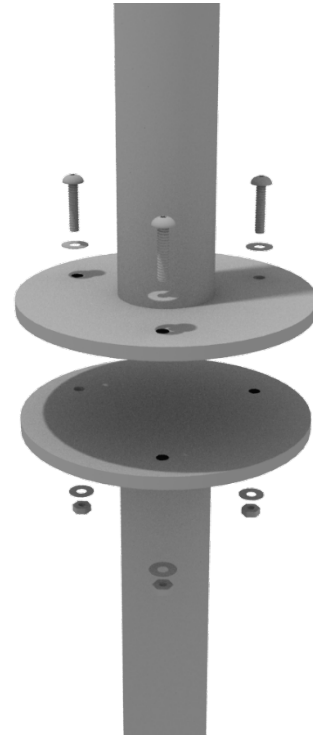
Repeat this process for each attachment point. Set the climber into place, then attach the second half of the clamp around the post.



Standing Orbital Spinner

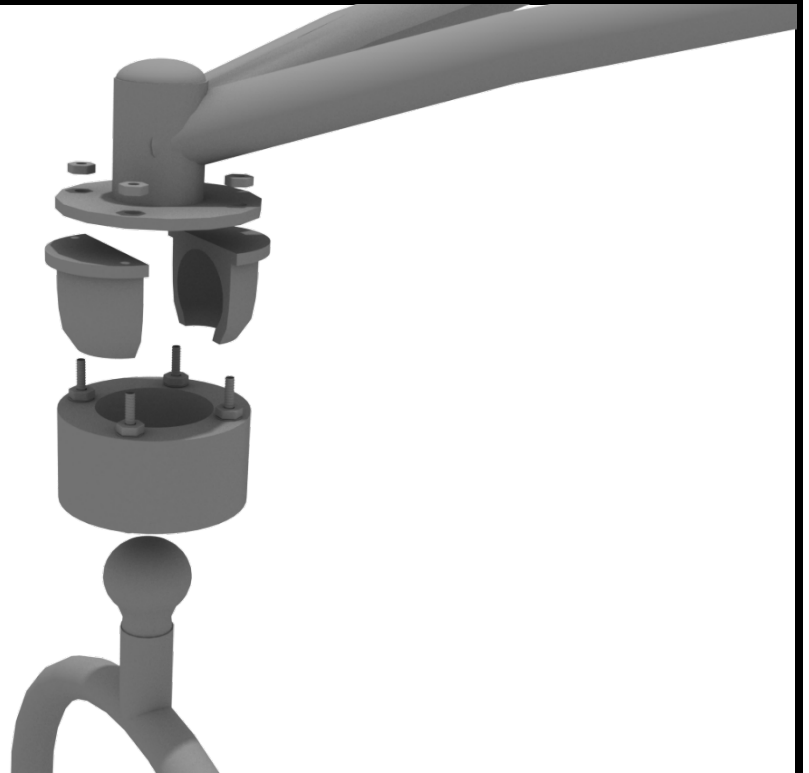
STEP: 1

Refer to the General Installation Guide regarding the spinner mount. Attach the spinner ground mount to the spinner using three (3) M10*20 bolts, three (3) M10 spring gaskets, and one (3) M10 large gaskets.



STEP: 2

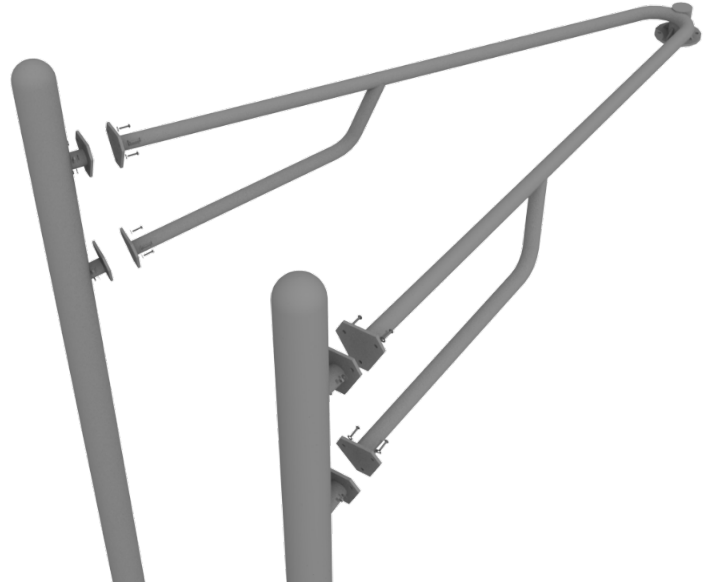
Then, attach the top connection bracket to the spinner using the pre-attached hardware.



Standing Orbital Spinner

STEP: 3

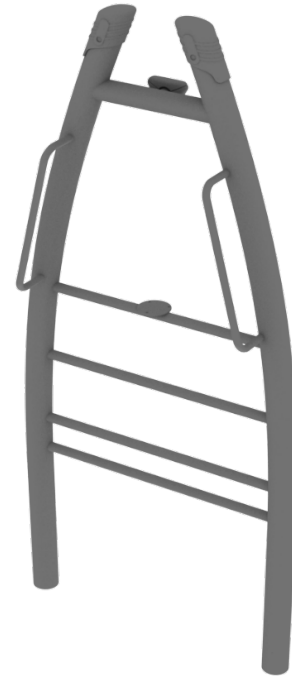
Then, attach the entire spinner to the support posts using (3) M10*25 bolts, six (6) M10 washers, and three (3) M10 lock nuts for each bracket.



Saddle Slide Install

STEP: 1

Refer to the General Installation guide footing information and dig proper holes for the support posts.



STEP: 2

See general installation guide regarding footing information for the slide end mount. Using two (2) M8*20, two (M8) spring washers. And two (2) M8 washers, attach the slide to the slide support post. Attach the slide to the support using two (2) M8*20, two (M8) spring washers. And two (2) M8 washers.

