

## STEP: 1

**DO NOT CEMENT POSTS INTO PLACE  
UNTIL THE ENTIRE STRUCTURE IS  
ASSEMBLED.**

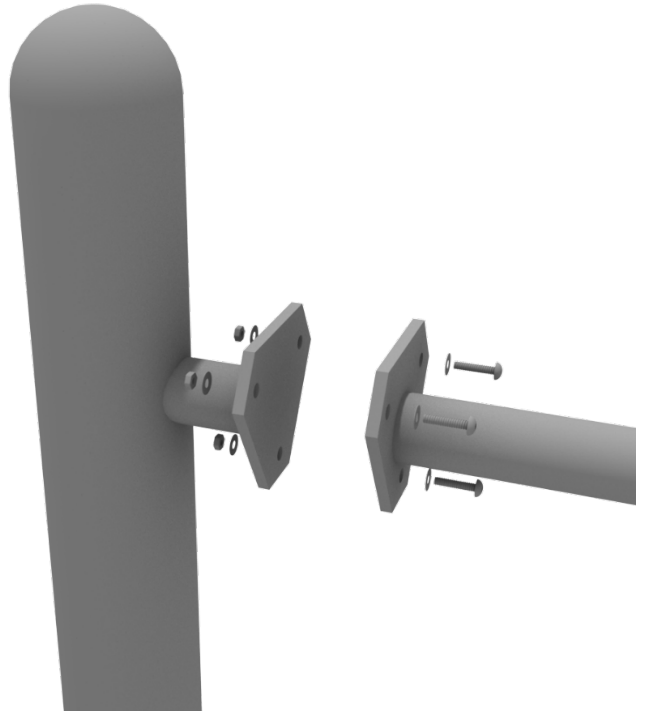
Refer to the General Installation  
guide footing information and dig  
proper holes for the support posts.



# Get Physical Series – Standard Attachment Point Installation

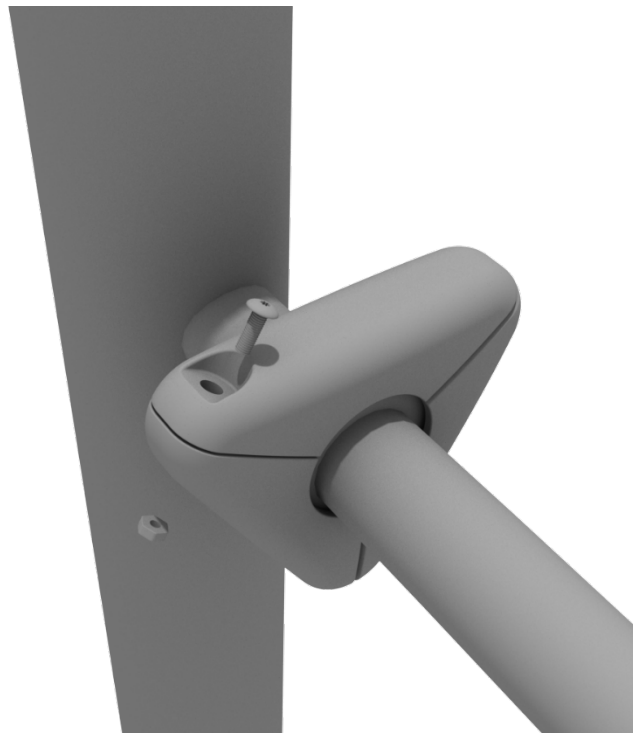
## STEP: 1

Most components of a Get Physical series structure attach using this standard attachment point. Use three (3) M10\*25 bolts, six (6) M10 washers, and three (3) M10 lock nuts.



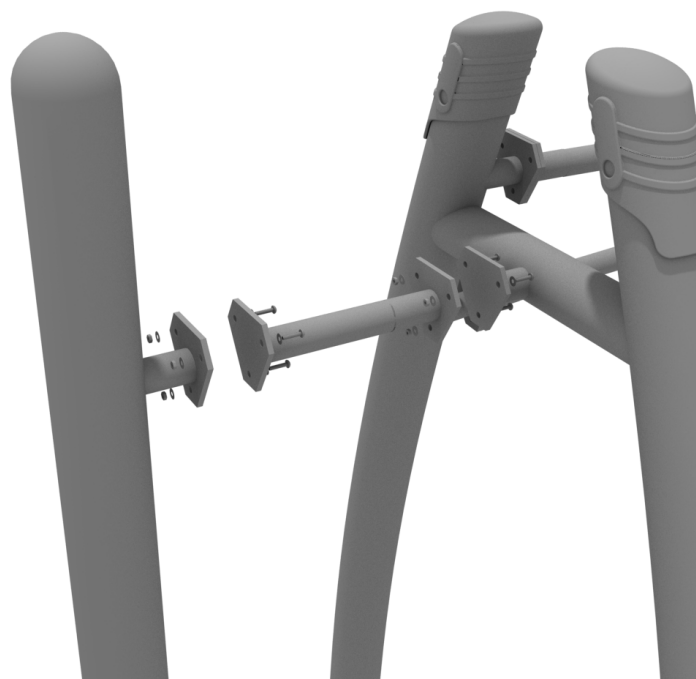
## STEP: 2

Each of these attachment points has a rubber cover to protect the bolts. Attach the cover and secure using the pre-attached M8\*40 bolt and M8 lock nut.



# Get Physical Connect Bar Install

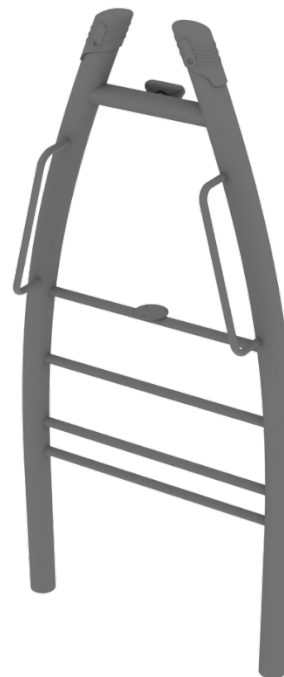
To connect any Get Physical Arch posts together. Refer to the Standard Attachment Point install section for more detailed information.



# Saddle Slide Install

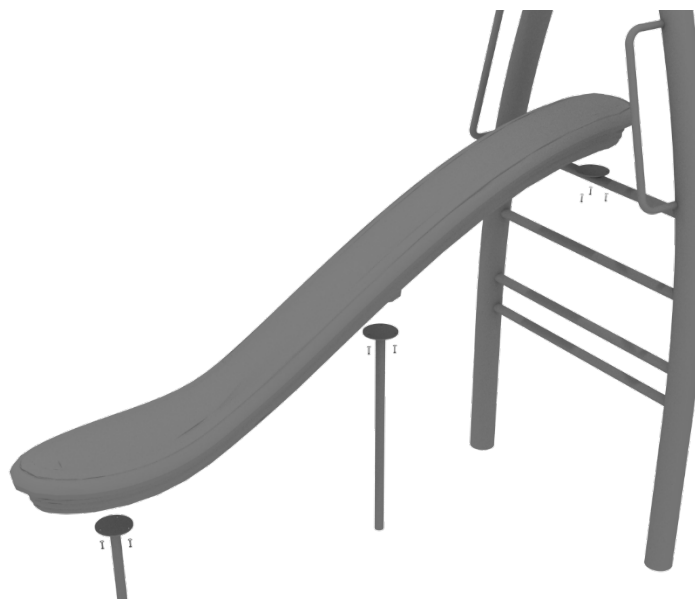
## STEP: 1

Refer to the General Installation guide footing information and dig proper holes for the support posts.



## STEP: 2

See general installation guide regarding footing information for the slide end mount. Using two (2) M8\*20, two (M8) spring washers. And two (2) M8 washers, attach the slide to the slide support post. Attach the slide to the support using two (2) M8\*20, two (M8) spring washers. And two (2) M8 washers.

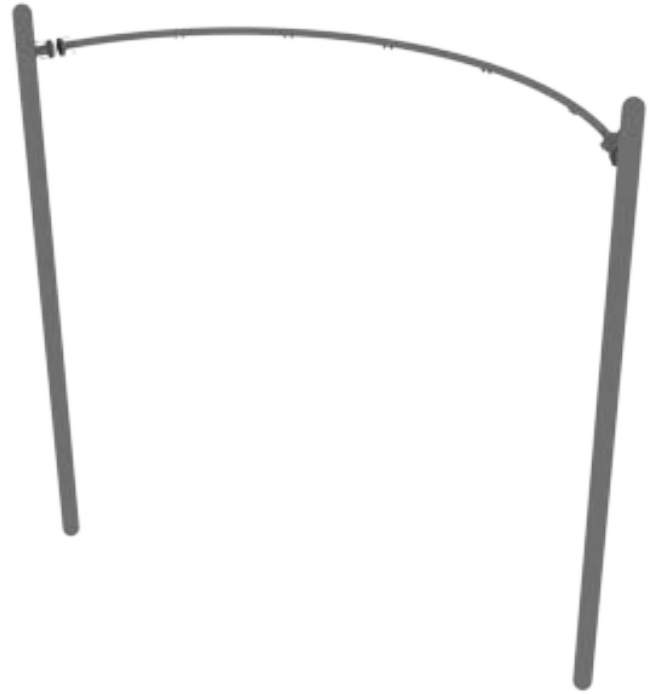


# Get Physical Series – Curved Pebble Bridge Install

## STEP: 1

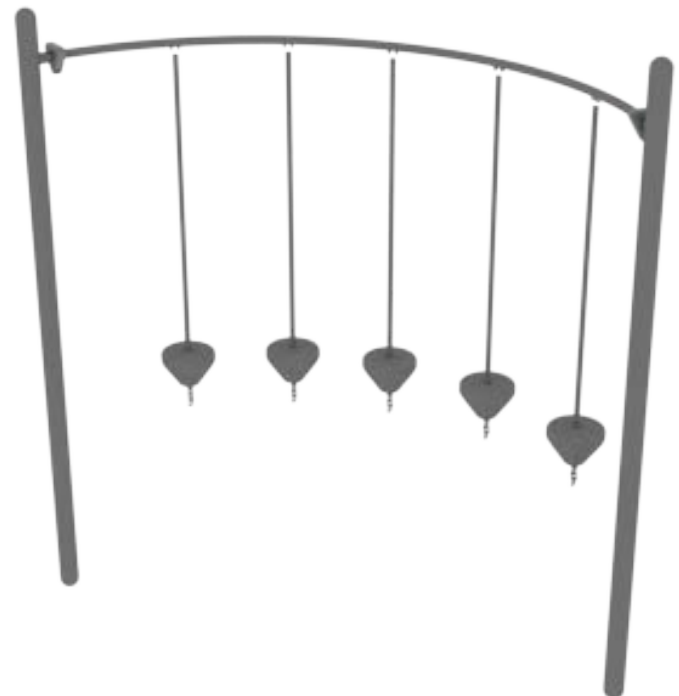
Connect the Curved Pebble Bridge top rail to the appropriate posts via the Standard Attachment Point.

Refer to the Standard Attachment Point install section for more detailed information.



## STEP: 2

Dig suitable footings for each of the pebble steps. Please refer to the footing section for climbers in the General Installation Instructions document.



### STEP: 3

Each of the pebble steps will attach to the top rail using one (1) M10\*55 bolt, two (2) M10 washers, and one (1) M10 lock nut.



# Get Physical Series – Tilted Pebble Bridge Install

## STEP: 1

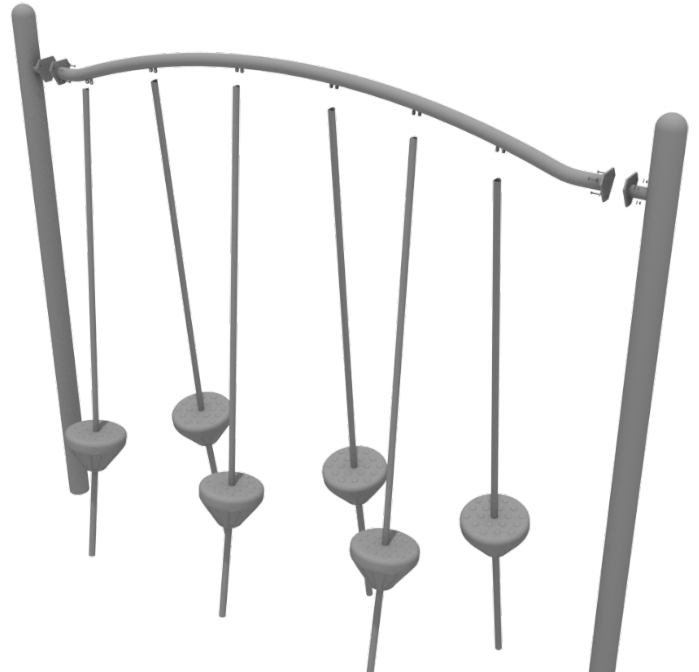
Connect the Tilted Pebble Bridge top rail to the appropriate posts via the Standard Attachment Point.

Refer to the Standard Attachment Point install section for more detailed information.



## STEP: 2

Dig suitable footings for each of the pebble steps. Please refer to the footing section for climbers in the General Installation Instructions document.



### STEP: 3

Each of the pebble steps will attach to the top rail using one (1) M10\*55 bolt, two (2) M10 washers, and one (1) M10 lock nut.





## Get Physical Series –Curved Floating Bridge Install

### STEP: 1

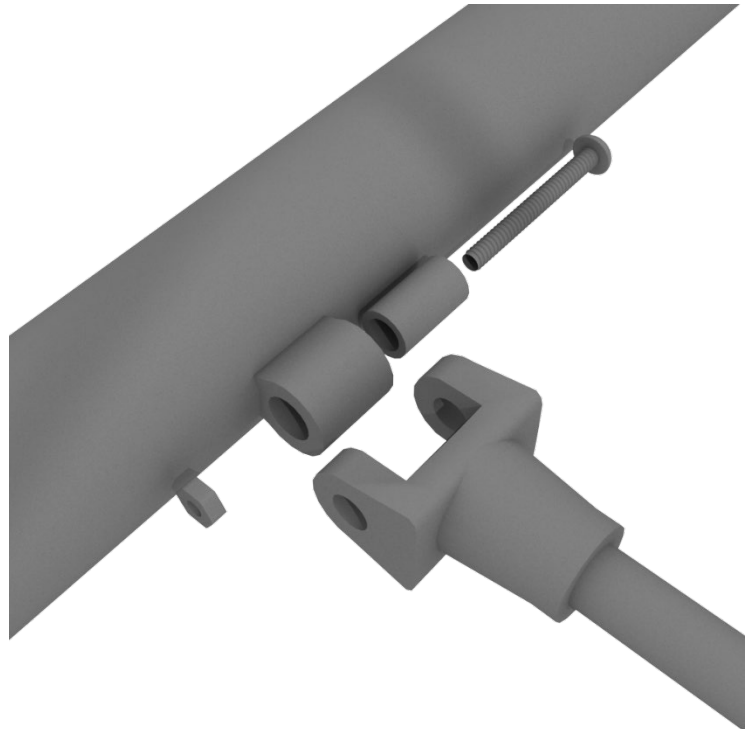
Connect the rails of the Curved Floating Bridge to the appropriate posts, and mark ground for footing locations. The Curved Floating Bridge uses the Standard Attachment points to connect to the posts.

Refer to the Standard Attachment Point guide for more details on how to connect.



### STEP: 2

Connect the net to the bridge rails using one (1) M8\*50 bolt, one (1) plastic spacer, and one (1) M8 lock nut for each attachment point.



### STEP: 3

Ensure that all connection points on the net are secured to each of the rails and bridge.



# Get Physical Series - Tower of Rings Install

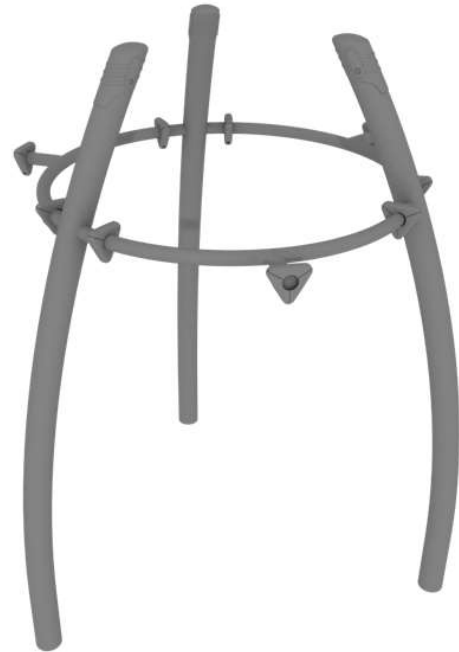
## STEP: 1

To set up the Tower of Rings, first attach the top bars. Use three (3) M10\*25 bolts, six (6) M10 washers, and three (3) M10 lock nuts for each attachment point.



## STEP: 2

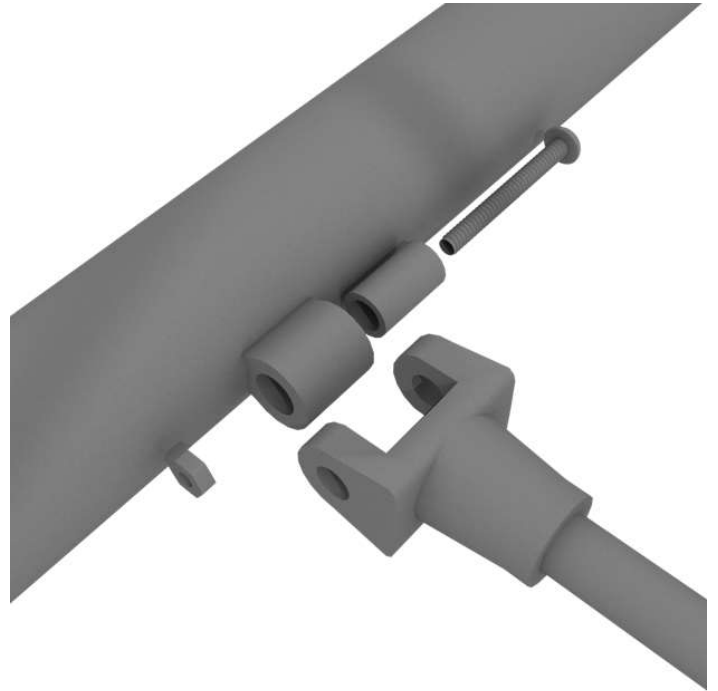
**Do not cement post until  
Floating rings are installed on  
structure.**



# Get Physical Series - Tower of Rings Install

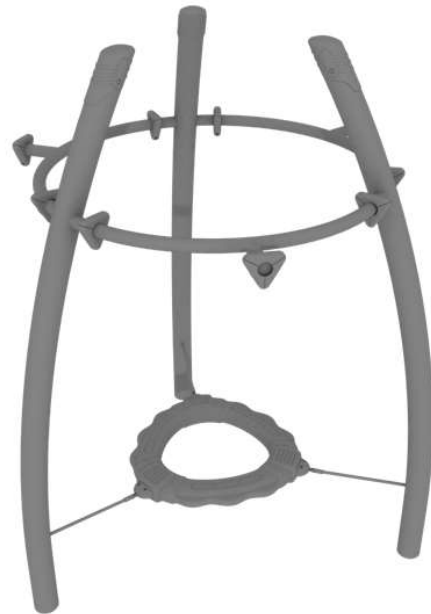
## STEP: 3

To install the floating rings, connect the rings to the post using one (1) M8\*50 bolt, two (2) plastic spacers, and one (1) M8 lock nut for each attachment point.



## STEP: 4

Repeat for the remaining floating rings.

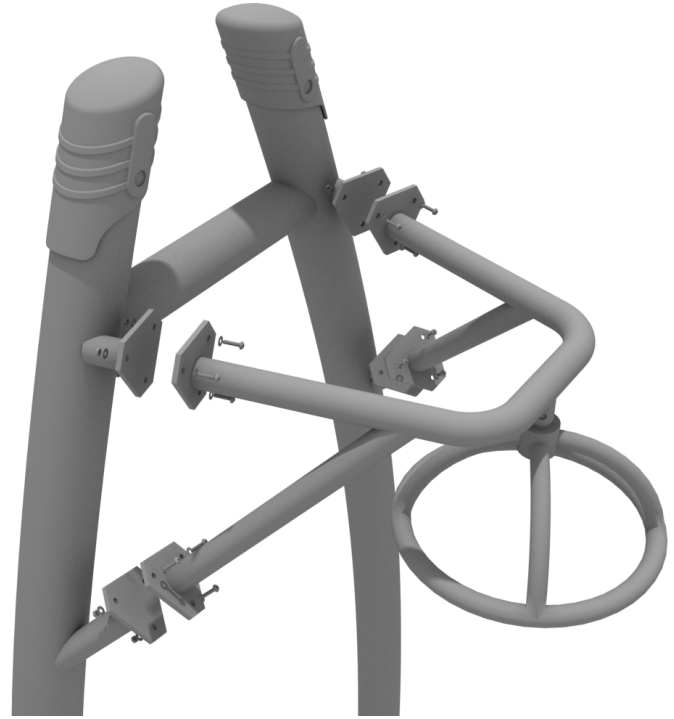


# Get Physical Overhead Spinner Install

## STEP: 1

The Overhead spinner will attach to the support posts via the Standard Attachment Points.

For detailed info see the Standard Attachment Point guide at the beginning of this document.



# Pebble Climber Installation

## STEP: 1

See general installation guide  
regarding footing information.  
Pebble climber requires a 12" x 18"  
footing.

