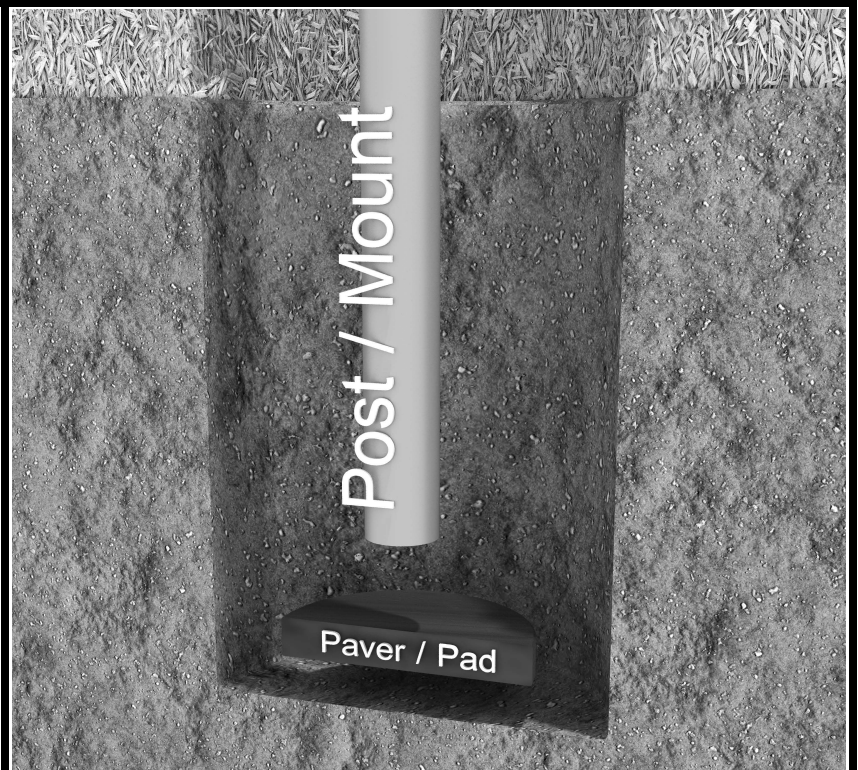


Inground Post/Mount Installation

STEP: 1

**DO NOT CEMENT POSTS/MOUNTS
INTO PLACE UNTIL THE ENTIRE
STRUCTURE IS ASSEMBLED.**

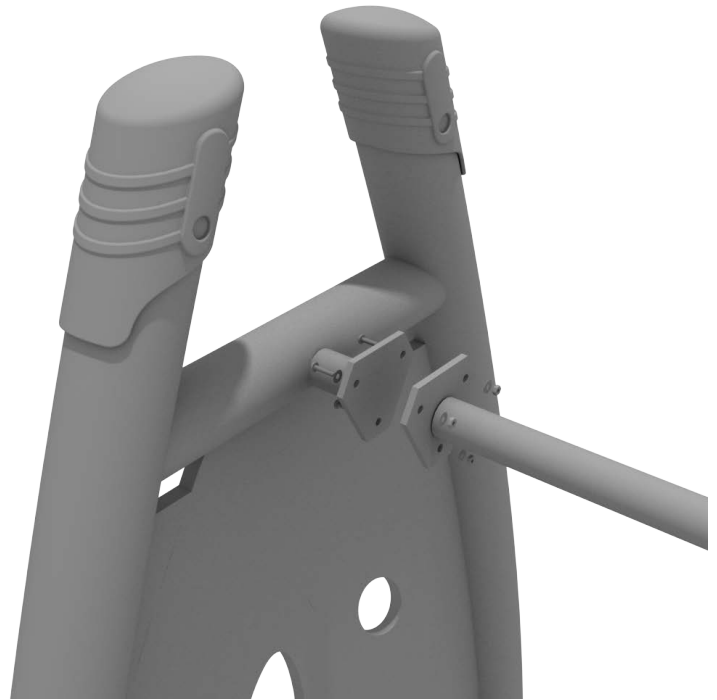
Refer to the General Installation
guide footing size information and
digging proper holes for the support
posts/mounts.



Get Physical Series – Standard Attachment Point Installation

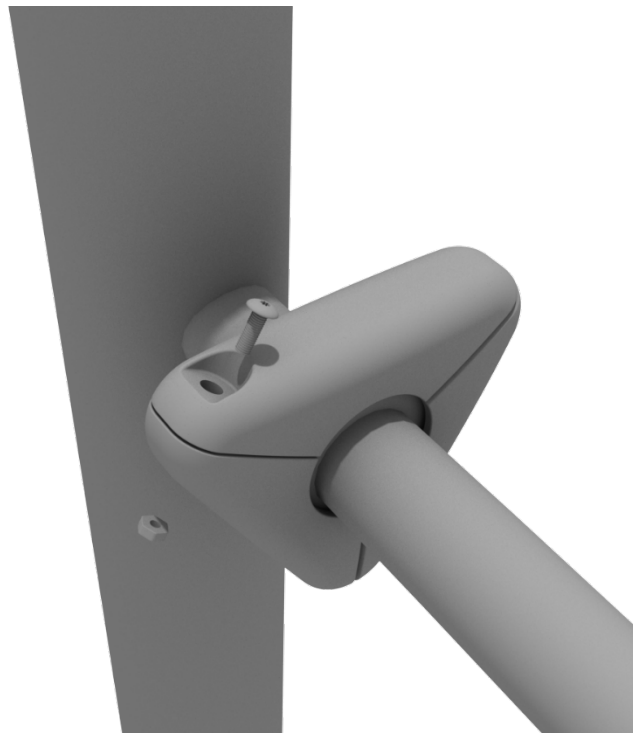
STEP: 1

Most components of a Get Physical series structure attach using this standard attachment point. Use three (3) M10*25 bolts, six (6) M10 washers, and three (3) M10 lock nuts.



STEP: 2

Each of these attachment points has a rubber cover to protect the bolts. Attach the cover and secure using the pre-attached M8*40 bolt and M8 lock nut.

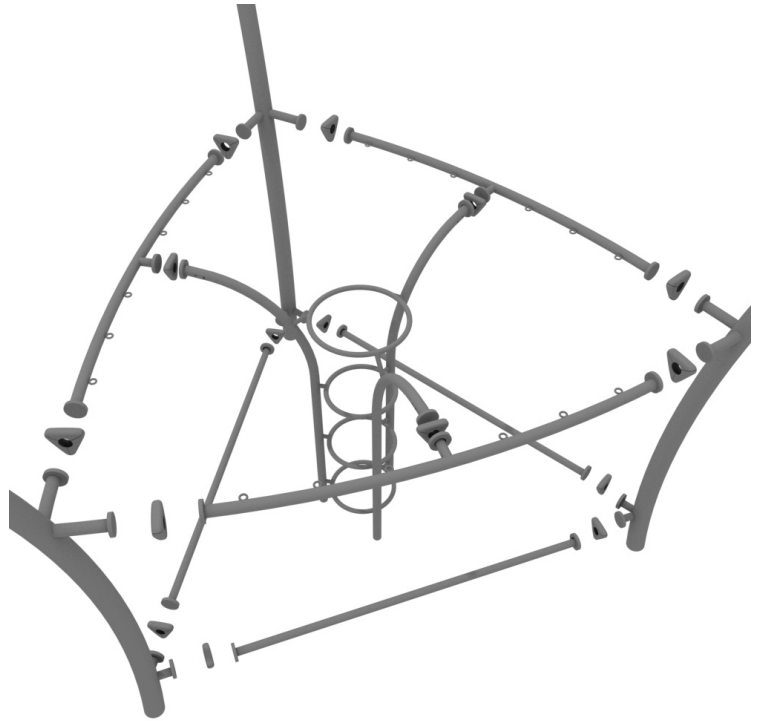


Combination Manhole Climber with Side Nets Install

STEP: 1

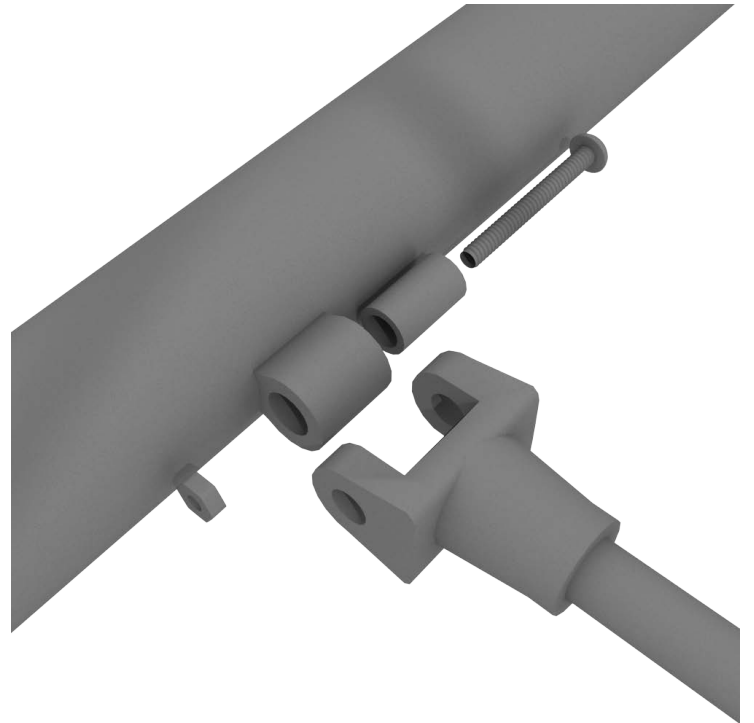
The Combination Manhole Climber will attach to the support posts via the Standard Attachment Points.

For detailed info see the Standard Attachment Point guide at the beginning of this document.



STEP: 2

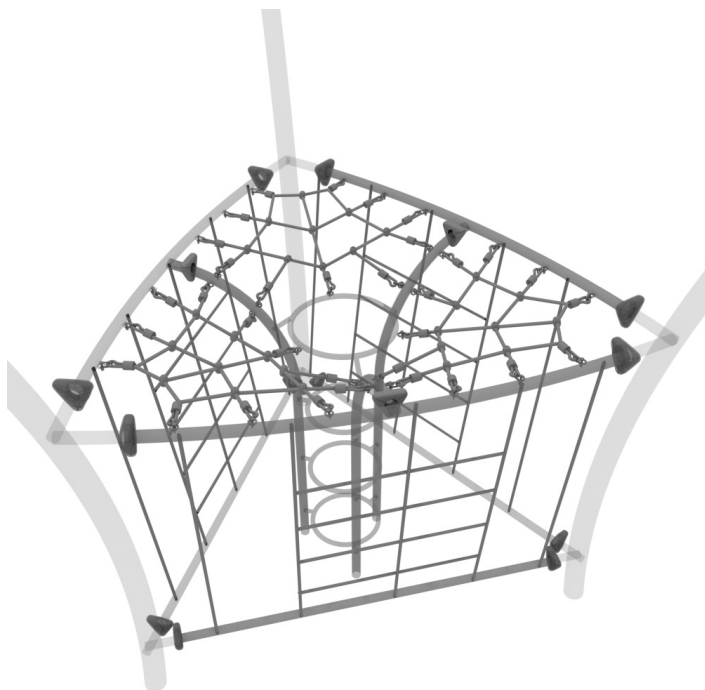
Connect the nets to the outer frame using one (1) M8*50 bolt, one (1) plastic spacer, and one (1) M8 lock nut for each attachment point.



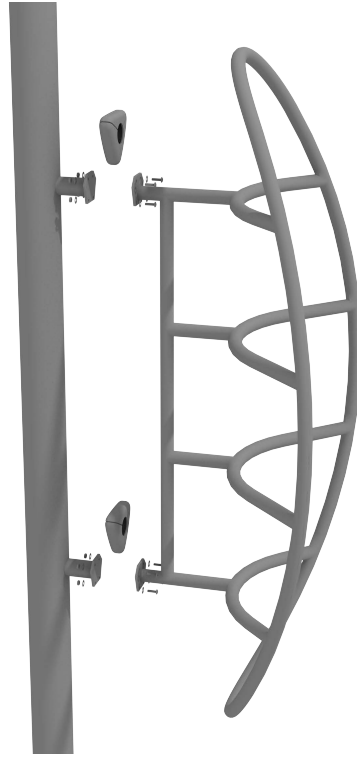
Combination Manhole Climber with Side Nets Install

STEP: 3

Repeat step 2 until all attachment points are connected.



To connect any Get Physical Arch posts together. Refer to the Standard Attachment Point install section for more detailed information.



PFS045-Floating Tunnel Bridge Install

STEP: 1

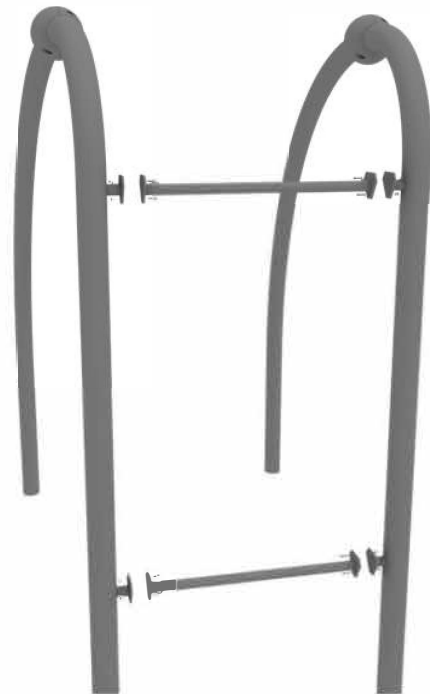
See the General Install Instructions document regarding footing information for climbers.

Connect the floating tunnel post using four (4) M12*35 bolts, eight (8) M12 washers and four (4) M12 lock nut per connection point. Once assembled loosen and attach connection cover over designated part.



STEP: 2

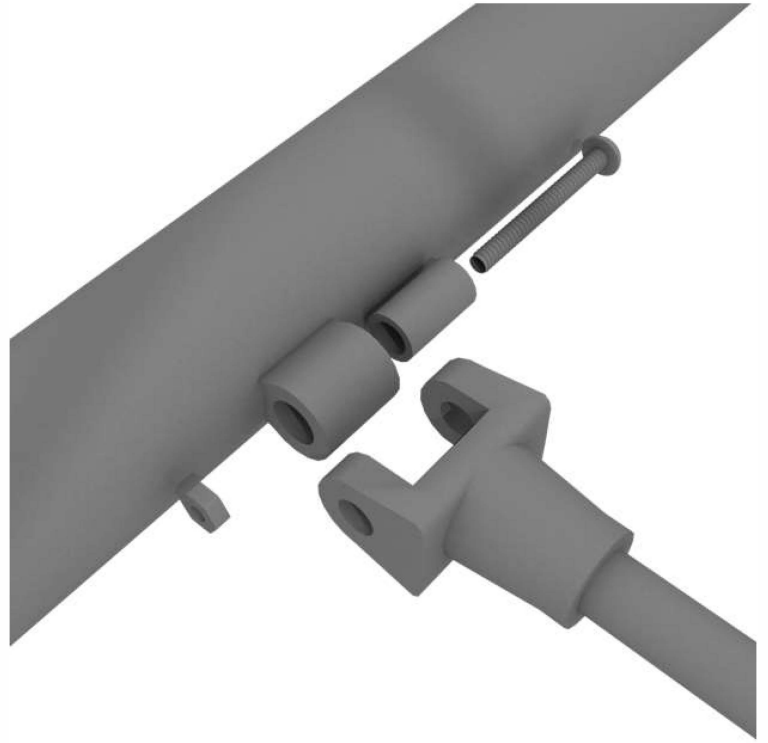
Connect connector bars designated for this structure. Use three (3) M10*25 bolts, six (6) M10 washers, and three (3) M10 lock nuts for each attachment point.



PFS045-Floating Tunnel Bridge Install

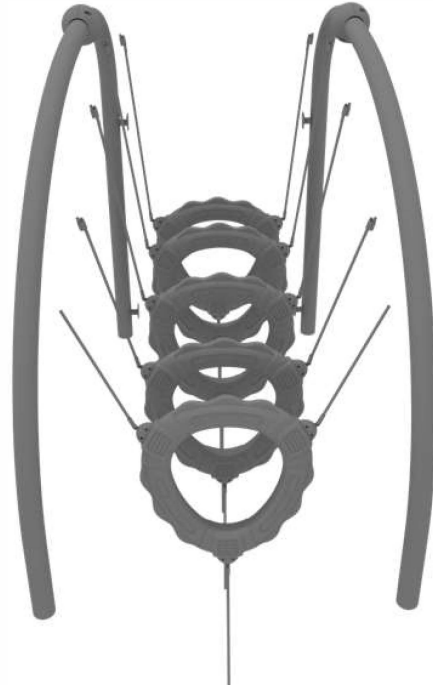
STEP: 3

Connect the floating rings to the outer frame using one (1) M8*50 bolt, two (2) plastic spacers, and one (1) M8 lock nut for each attachment point.



STEP: 4

Repeat this step for remaining floating rings.



PFS045-Floating Tunnel Bridge Install

STEP: 5

Dig suitable footings for the in-ground mount. Concrete floating ring chain with mount into place at appropriate depth. Follow guidelines from Concrete manufacturer for amount / time of curing, etc



Connect the Square Net Climber to the appropriate posts via the Standard Attachment Points. Please refer to the Standard Attachment Point Install section for more detailed information.



Get Physical Series – Tilted Pebble Bridge Install

STEP: 1

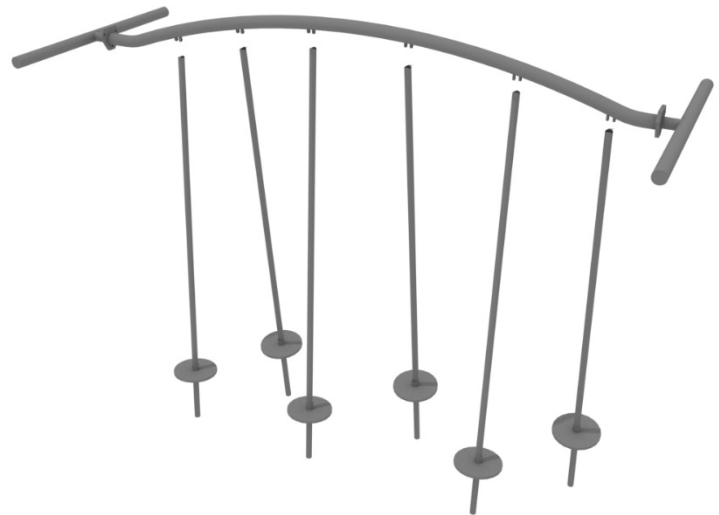
Connect the Tilted Pebble Bridge top rail to the appropriate posts via the Standard Attachment Point.

Refer to the Standard Attachment Point install section for more detailed information.



STEP: 2

Dig suitable footings for each of the pebble steps. Please refer to the footing section for climbers in the General Installation Instructions document.



STEP: 3

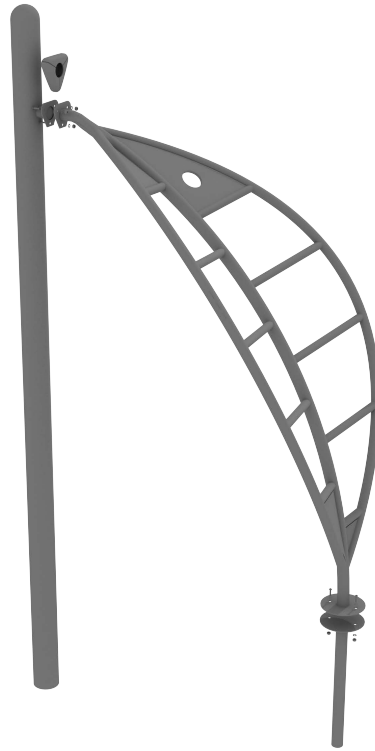
Each of the pebble steps will attach to the top rail using one (1) M10*55 bolt, two (2) M10 washers, and one (1) M10 lock nut.



Leaf Climber Install

Connect the Leaf climber to the designated post using the Standard Attachment Point. Refer to the Standard Attachment Point install section for more detailed information.

Dig suitable footings for the Leaf Climber. Please refer to the footing section for climbers in the General Installation Instructions document.

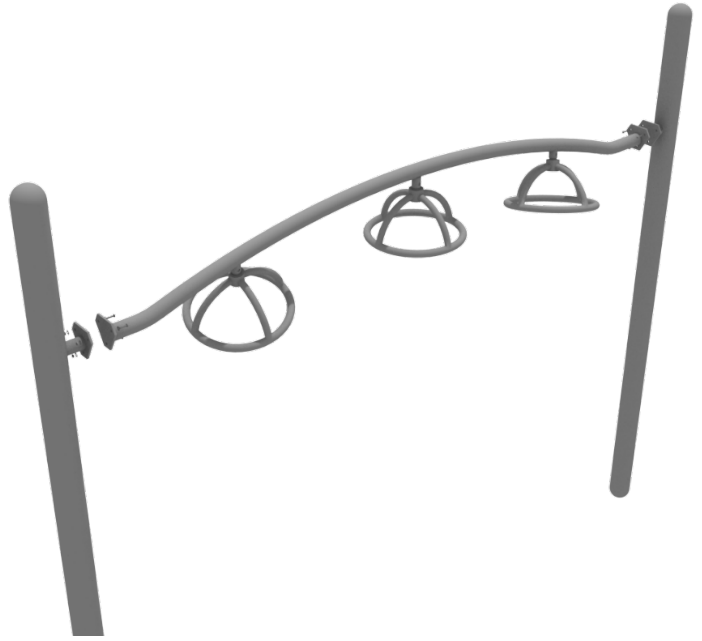


Get Physical Series – 3-Wheel Overhead Spinner Install

STEP: 1

Connect the 3-Wheel Overhead Spinner to the appropriate posts via the Standard Attachment Point.

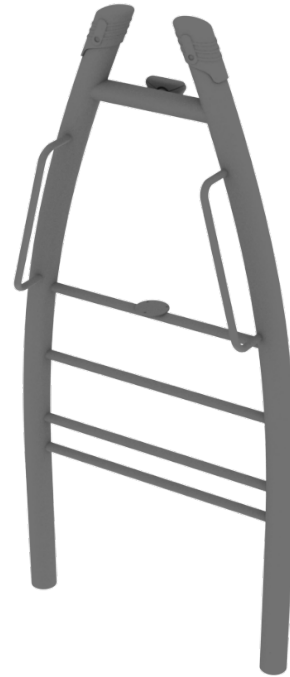
Refer to the Standard Attachment Point install section for more detailed information.



Saddle Slide Install

STEP: 1

Refer to the General Installation guide footing information and dig proper holes for the support posts.



STEP: 2

See general installation guide regarding footing information for the slide end mount. Using two (2) M8*20, two (M8) spring washers. And two (2) M8 washers, attach the slide to the slide support post. Attach the slide to the support using two (2) M8*20, two (M8) spring washers. And two (2) M8 washers.

