

# Inground Post/Mount Installation

## STEP: 1

**DO NOT CEMENT POSTS/MOUNTS  
INTO PLACE UNTIL THE ENTIRE  
STRUCTURE IS ASSEMBLED.**

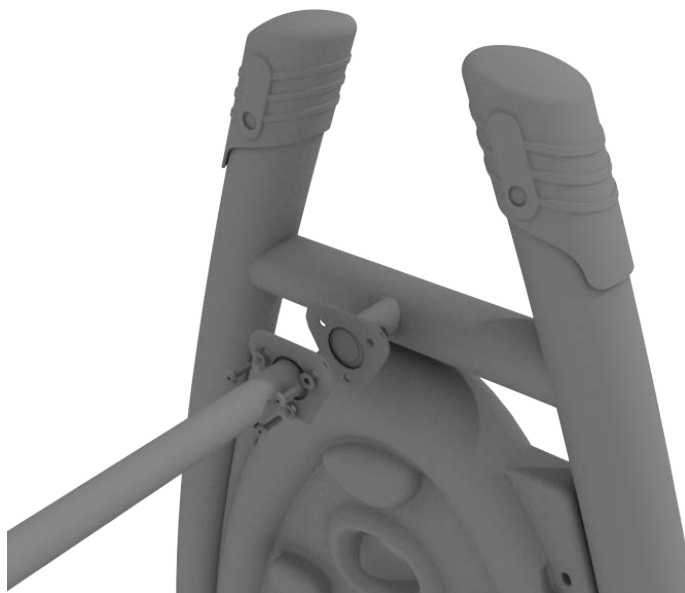
Refer to the General Installation  
guide footing size information and  
digging proper holes for the support  
posts/mounts.



10859 E Washington St. Suite 200  
Indianapolis, IN 46229  
1-800-667-0097

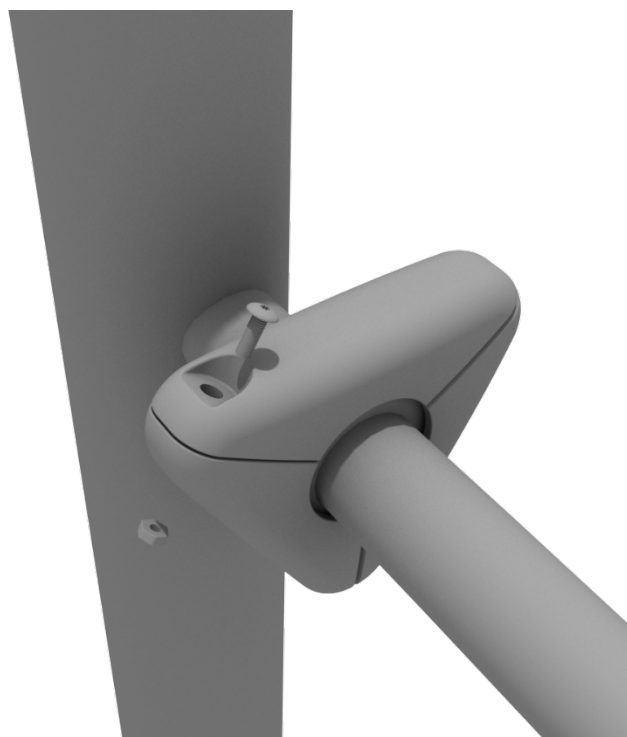
Created By: Gage Brown  
Date: 04/26/2018

Attach using this standard attachment point. Use three (3) M10\*25 bolts, six (6) M10 washers, and three (3) M10 lock nuts.



### STEP: 2

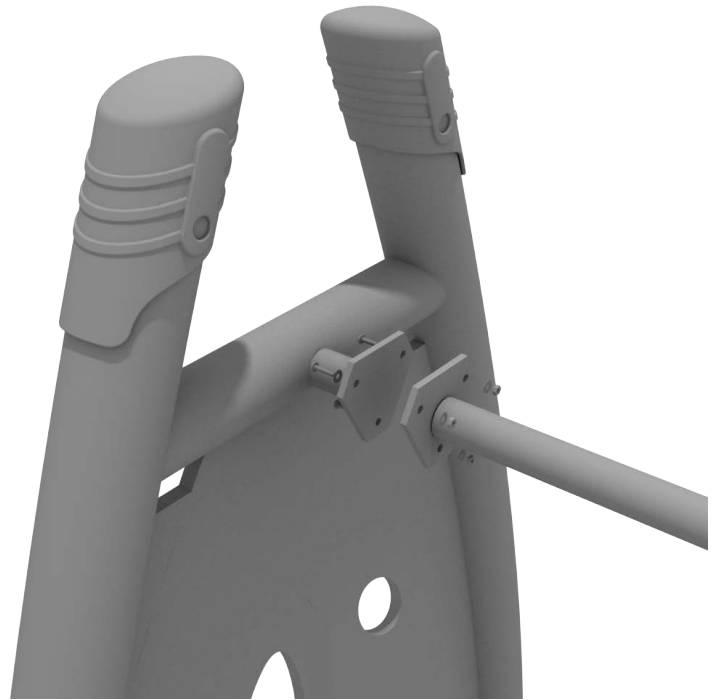
Each of these attachment points has a rubber cover to protect the bolts. Attach the cover and secure using the pre-attached M8\*40 bolt and M8 lock nut.



# Get Physical Series – Standard Attachment Point Installation

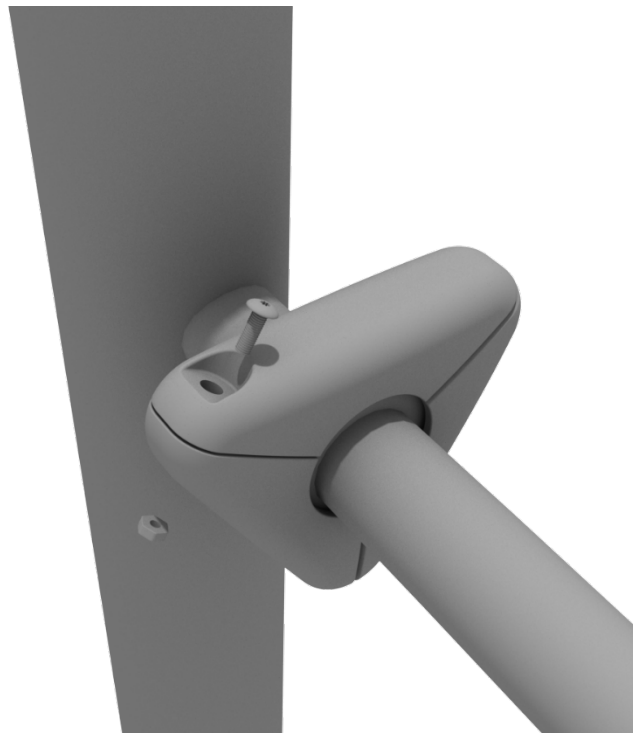
## STEP: 1

Most components of a Get Physical series structure attach using this standard attachment point. Use three (3) M10\*25 bolts, six (6) M10 washers, and three (3) M10 lock nuts.



## STEP: 2

Each of these attachment points has a rubber cover to protect the bolts. Attach the cover and secure using the pre-attached M8\*40 bolt and M8 lock nut.



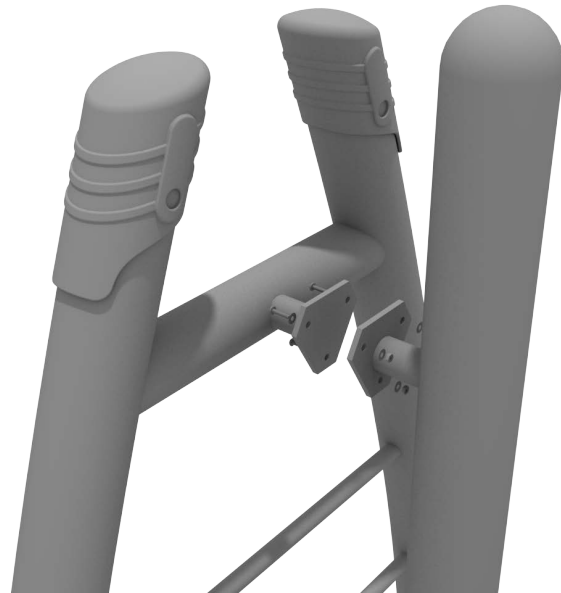
# Get Physical Series – Bent Rung Arch Post Climber

## Installation

### STEP: 1

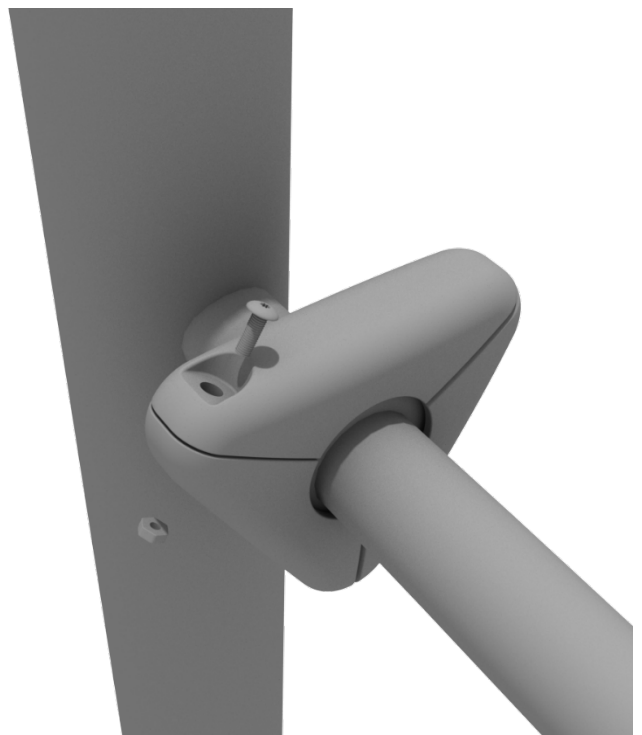


Attach using this standard attachment point. Use three (3) M10\*25 bolts, six (6) M10 washers, and three (3) M10 lock nuts.



### STEP: 2

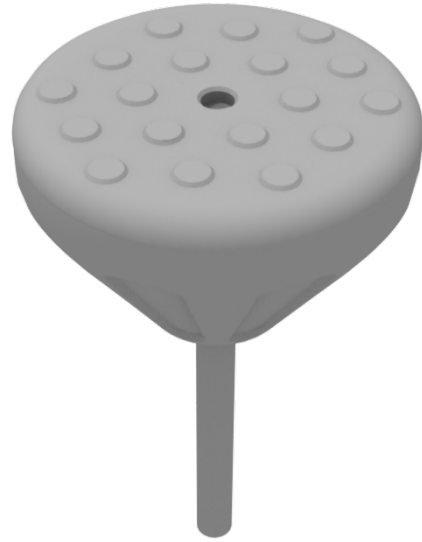
Each of these attachment points has a rubber cover to protect the bolts. Attach the cover and secure using the pre-attached M8\*40 bolt and M8 lock nut.



# Pebble Climber Installation

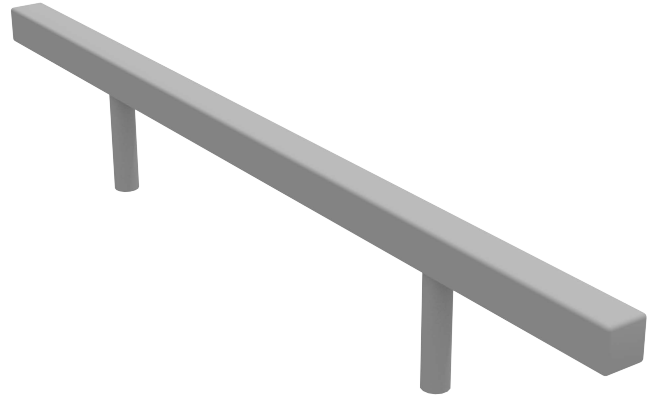
## STEP: 1

See general installation guide  
regarding footing information.  
Pebble climber requires a 12" x 18"  
footing.



# Balance Beam Installation

See general installation guide regarding footing information. Dig 2 footings for zig zag balance beam ensuring proper spacing by referencing the equipment on-site. Adjust footer depth depending on surfacing used. 6-inch surfacing would require a 24" deep footing.



# PFS045-Floating Tunnel Bridge Install

## STEP: 1

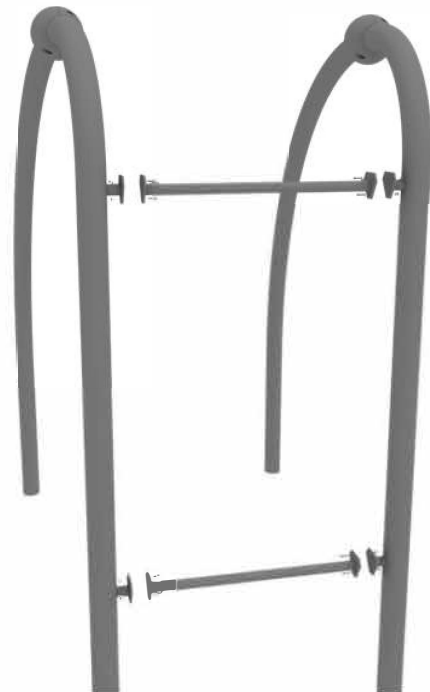
See the General Install Instructions document regarding footing information for climbers.

Connect the floating tunnel post using four (4) M12\*35 bolts, eight (8) M12 washers and four (4) M12 lock nut per connection point. Once assembled loosen and attach connection cover over designated part.



## STEP: 2

Connect connector bars designated for this structure. Use three (3) M10\*25 bolts, six (6) M10 washers, and three (3) M10 lock nuts for each attachment point.

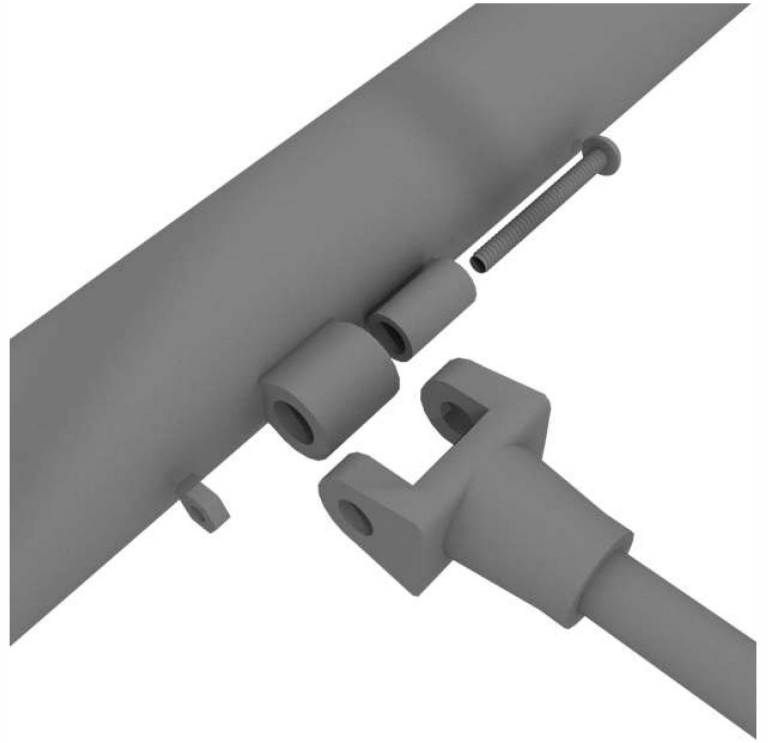




# PFS045-Floating Tunnel Bridge Install

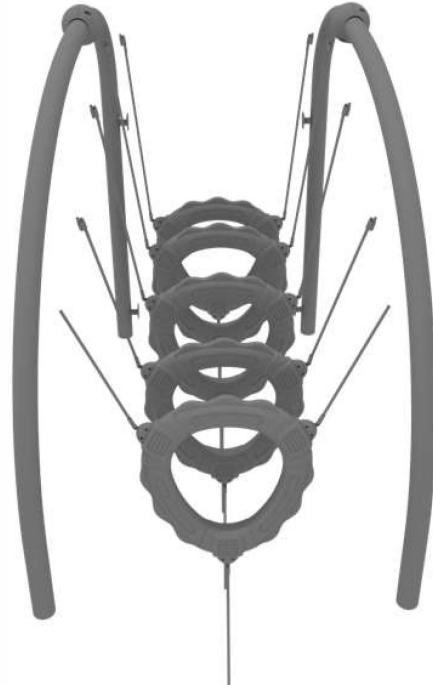
## STEP: 3

Connect the floating rings to the outer frame using one (1) M8\*50 bolt, two (2) plastic spacers, and one (1) M8 lock nut for each attachment point.



## STEP: 4

Repeat this step for remaining floating rings.





# PFS045-Floating Tunnel Bridge Install

## STEP: 5

Dig suitable footings for the in-ground mount. Concrete floating ring chain with mount into place at appropriate depth. Follow guidelines from Concrete manufacturer for amount / time of curing, etc



# Get Physical Series - Tower of Rings Install

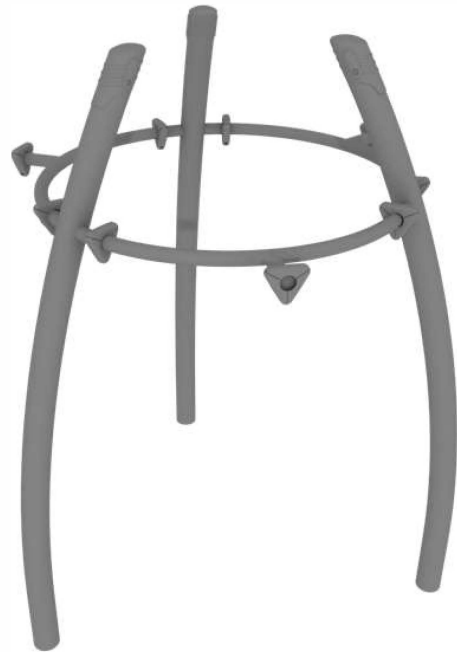
## STEP: 1

To set up the Tower of Rings, first attach the top bars. Use three (3) M10\*25 bolts, six (6) M10 washers, and three (3) M10 lock nuts for each attachment point.



## STEP: 2

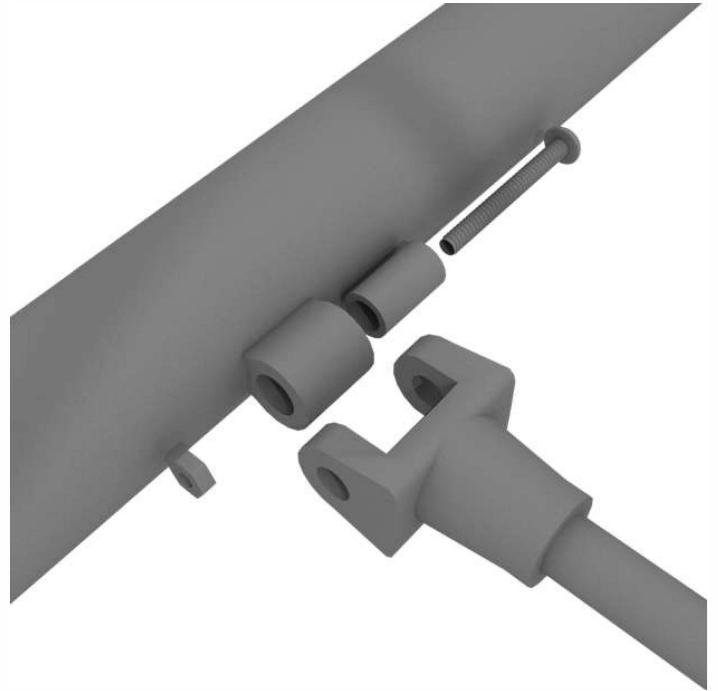
**Do not cement post until  
Floating rings are installed on  
structure.**



# Get Physical Series - Tower of Rings Install

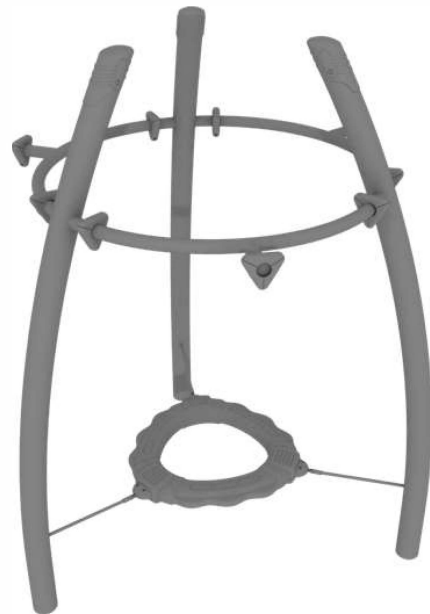
## STEP: 3

To install the floating rings, connect the rings to the post using one (1) M8\*50 bolt, two (2) plastic spacers, and one (1) M8 lock nut for each attachment point.



## STEP: 4

Repeat for the remaining floating rings.



# Get Physical Series – Tilted Pebble Bridge Install

## STEP: 1

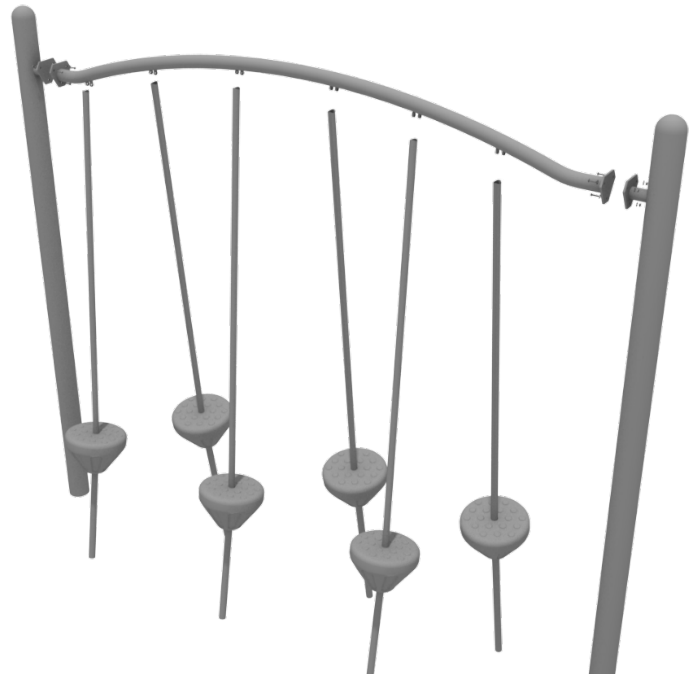
Connect the Tilted Pebble Bridge top rail to the appropriate posts via the Standard Attachment Point.

Refer to the Standard Attachment Point install section for more detailed information.



## STEP: 2

Dig suitable footings for each of the pebble steps. Please refer to the footing section for climbers in the General Installation Instructions document.



### STEP: 3

Each of the pebble steps will attach to the top rail using one (1) M10\*55 bolt, two (2) M10 washers, and one (1) M10 lock nut.



# Floating Net Bridge Install

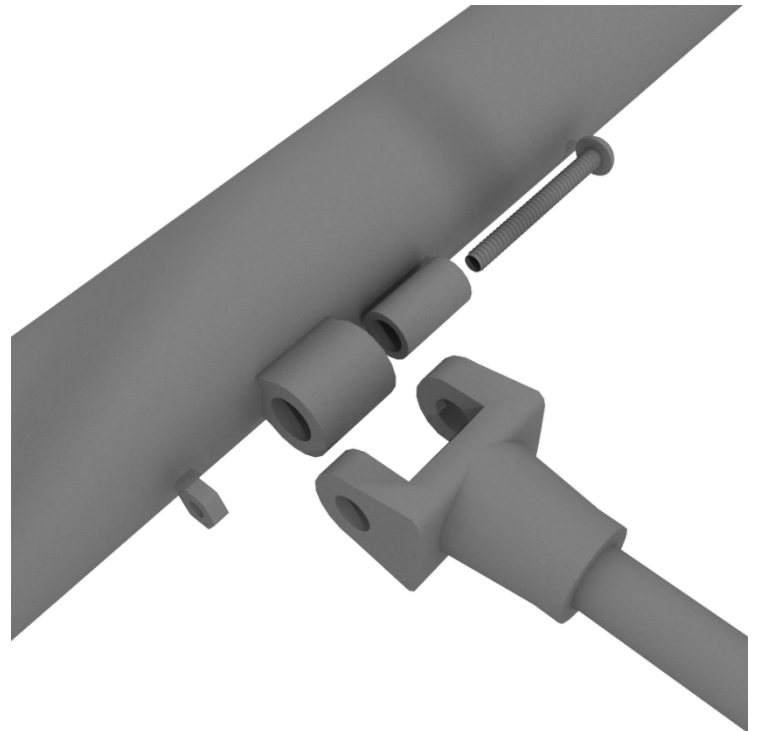
## STEP: 1

Connect the Floating Net Bridge handrails to the designated post using Standard Attachment points.

Refer to the Standard Attachment Point install section for more detailed information.



Connect the net to the outer frame using one (1) M8\*50 bolt, one (1) plastic spacer, and one (1) M8 lock nut for each attachment point.



# Floating Net Bridge Install

Using one (1) M10\*90 bolt, two (2) M10 washers, one (1) M10 Lock nut and bolt cover with cap attach net to bottom of floating Bridge for each connecting point.

Connect top of net to bridge handrails using one (1) M10\*55 bolt, one (1) spacer, two (2) M10 washers and one M10 Lock Nut for each connection point.



Using the last four (4) longer M10\*75 Bolts and accompanying locknuts, secure the last two Crossbar Supports to the unit.





# Chain Climber Install

Connect the Chain Climber top rail to the appropriate posts via the Standard Attachment Point. Connect chain to top rail by using one (1) M10\*55 bolt, two (2) M10 washers, one (1) spacer and one one (1) M10 lock nut. Connect chain climber to ground mount by loosening attached hardware on chain. Please refer to the footing section for climbers in the General Installation Instructions document.

