

STEP: 1

**DO NOT CEMENT POSTS INTO PLACE
UNTIL THE ENTIRE STRUCTURE IS
ASSEMBLED.**

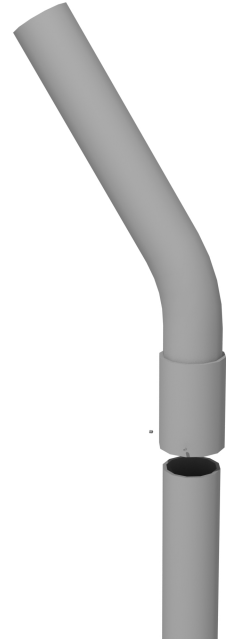
Refer to the General Installation
guide footing information and dig
proper holes for the support posts.



Post Extension Install

STEP: 1

Place post extension over designated post.



STEP: 2

Secure post extension by tightening set screws. Using castle topper clamp to secure post to post extension.



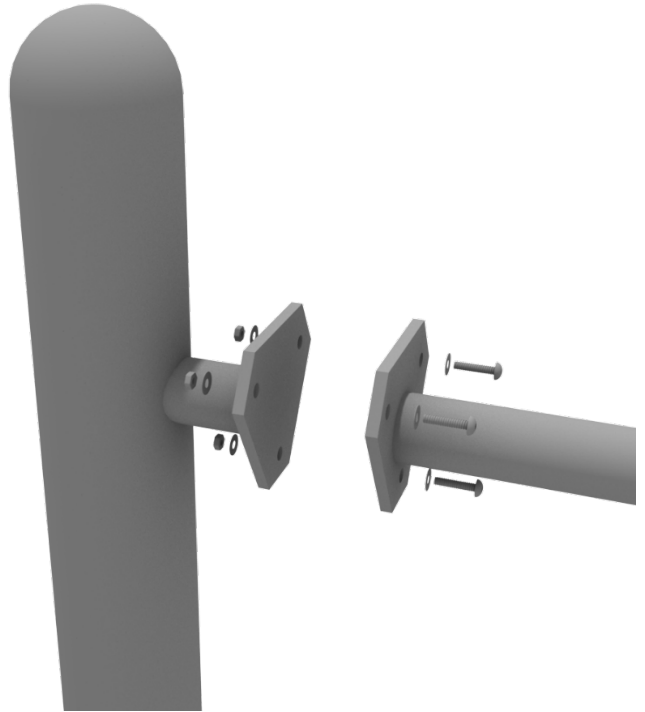
1 Playground Drive
Greenfield, IN 46140
1-800-667-0097

Created By: Aaron Price
Date Modified: 00/00/00

Get Physical Series – Standard Attachment Point Installation

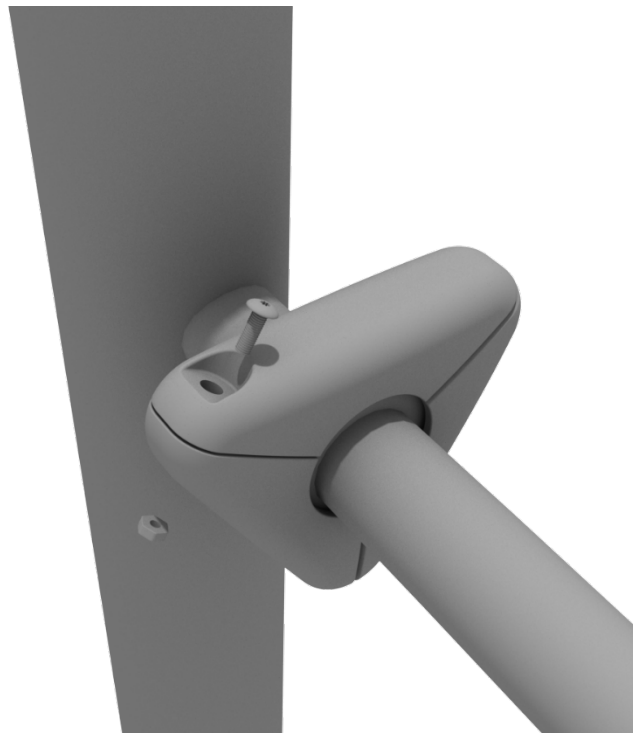
STEP: 1

Most components of a Get Physical series structure attach using this standard attachment point. Use three (3) M10*25 bolts, six (6) M10 washers, and three (3) M10 lock nuts.



STEP: 2

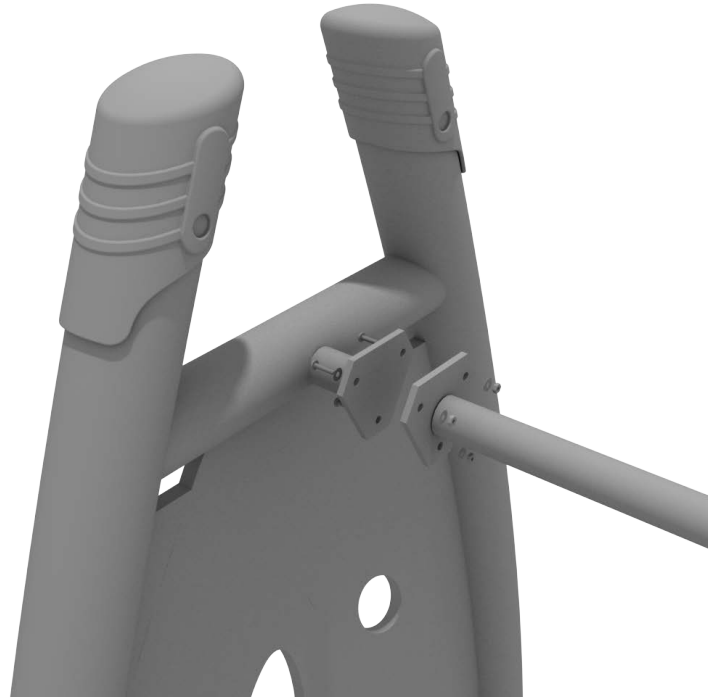
Each of these attachment points has a rubber cover to protect the bolts. Attach the cover and secure using the pre-attached M8*40 bolt and M8 lock nut.



Get Physical Series – Standard Attachment Point Installation

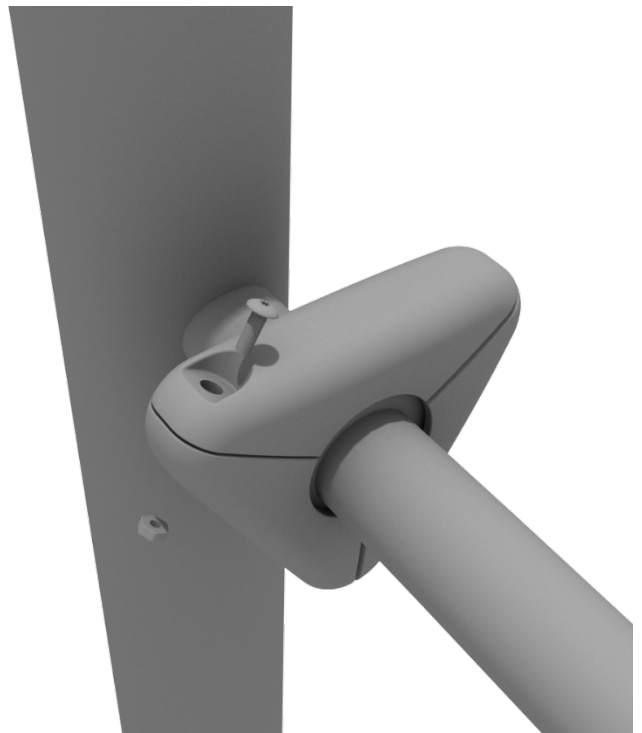
STEP: 1

Most components of a Get Physical series structure attach using this standard attachment point. Use three (3) M10*25 bolts, six (6) M10 washers, and three (3) M10 lock nuts.



STEP: 2

Each of these attachment points has a rubber cover to protect the bolts. Attach the cover and secure using the pre-attached M8*40 bolt and M8 lock nut.



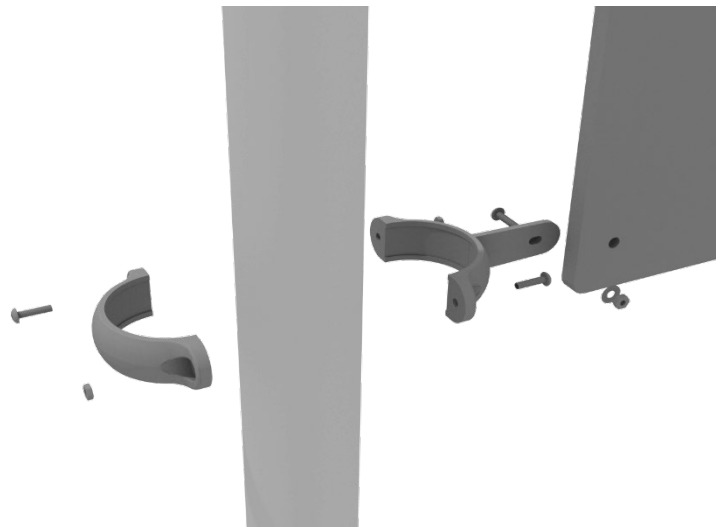
4.5-inch Clamp Installation Examples

The following two pages will include examples of how to install some of the most common types of Clamps that are present on our structures that use 4.5-inch outside diameter posts. The structure that you are assembling might not require all the types of clamps listed in these examples.

The Install Guides for specific components that come later in this document might call for a specific type of clamp (a tube clamp for example), those sections will not include detailed instructions for the clamps and should direct you back to this section for more detailed information.

4.5-inch Flat Clamp Installation Example

Connect half of the flat clamp to the component using one (1) M8*30 bolt and Lock Nut. Then, using the other half of the flat clamp and the hardware provided in the clamp hardware bag, attach the backside of the flat clamp around the post.



4.5-inch Clamp Installation Examples

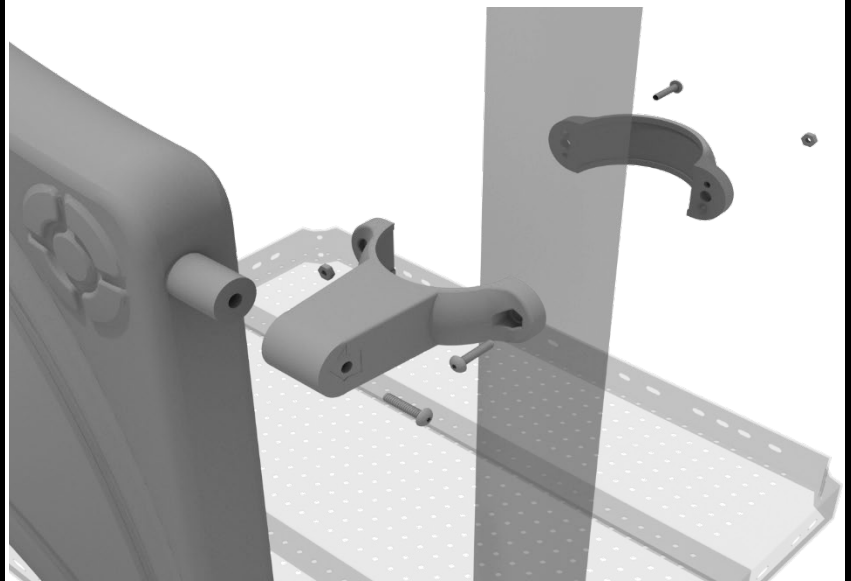
4.5-inch Tube Clamp Installation Example

Insert Bar on Component into one half of the Tube Clamp and attach with M4*25 Set Screw. Then, using the other half of the tube clamp and the hardware provided in the clamp hardware bag, attach the backside of the tube clamp around the post.



4.5-inch Double Slide Clamp Installation Example

Connect half of the double slide clamp to the double slide hood using one (1) M8*30 bolt. Then, using the other half of the clamp and the hardware provided in the clamp hardware bag, attach the backside of the double slide clamp around the post.



Get Physical Series –Curved Floating Bridge Install

STEP: 1

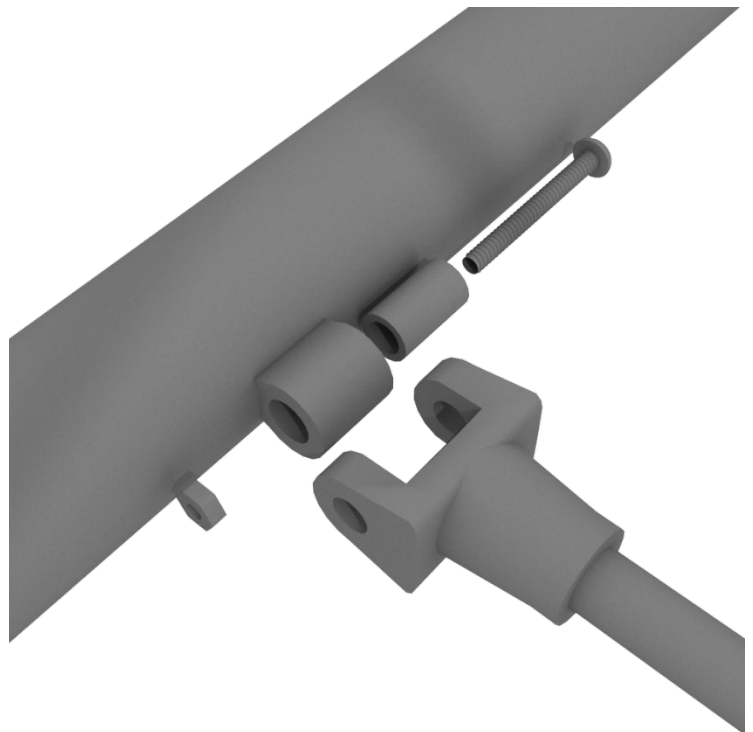
Connect the rails of the Curved Floating Bridge to the appropriate posts, and mark ground for footing locations. The Curved Floating Bridge uses the Standard Attachment points to connect to the posts.

Refer to the Standard Attachment Point guide for more details on how to connect.



STEP: 2

Connect the net to the outer frame using one (1) M8*50 bolt, one (1) plastic spacer, and one (1) M8 lock nut for each attachment point.



STEP: 3

Ensure that all connection points on the net are secured to each of the rails and bridge.



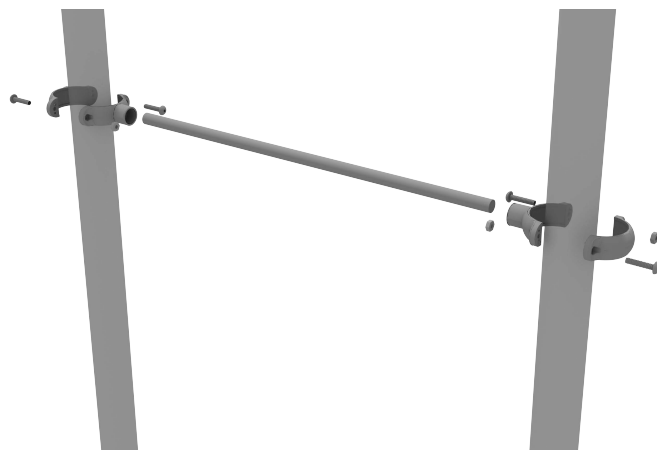
Connect the Square Net Climber to the appropriate posts via the Standard Attachment Points. Please refer to the Standard Attachment Point Install section for more detailed information.



Single Grip Chin Up Bar Install

STEP: 1

Connect the Chin up Bar to the designated post using two (2) 3.5-inch tube clamps.



Swinging Rings Install

STEP: 1

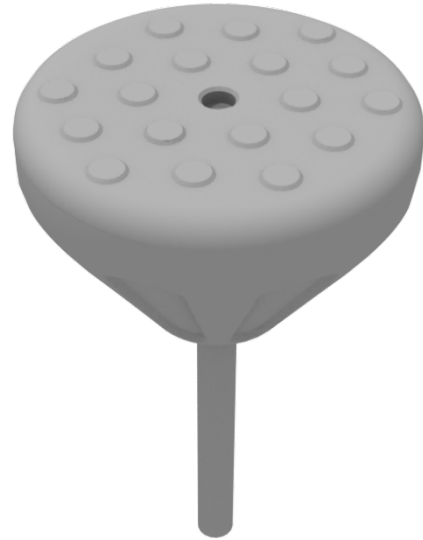
Connect the Swinging Rings Bar to the designated post using two (2) 3.5-inch tube clamps.



Pebble Climber Installation

STEP: 1

See general installation guide
regarding footing information.
Pebble climber requires a 12" x 18"
footing.

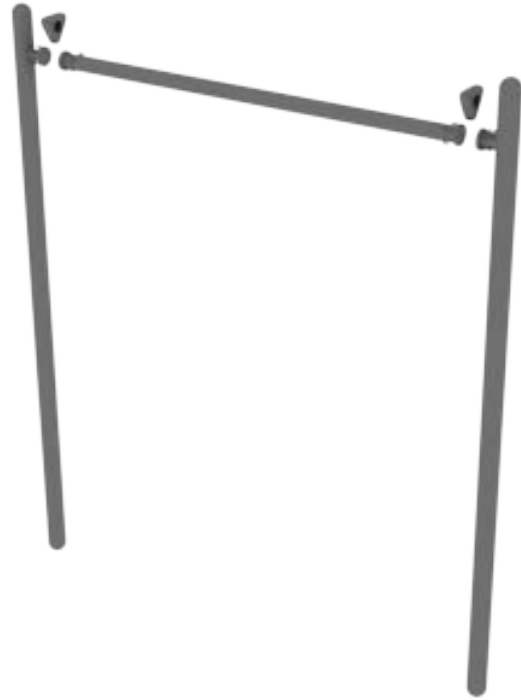


Get Physical Series – Straight Pebble Bridge Install

STEP: 1

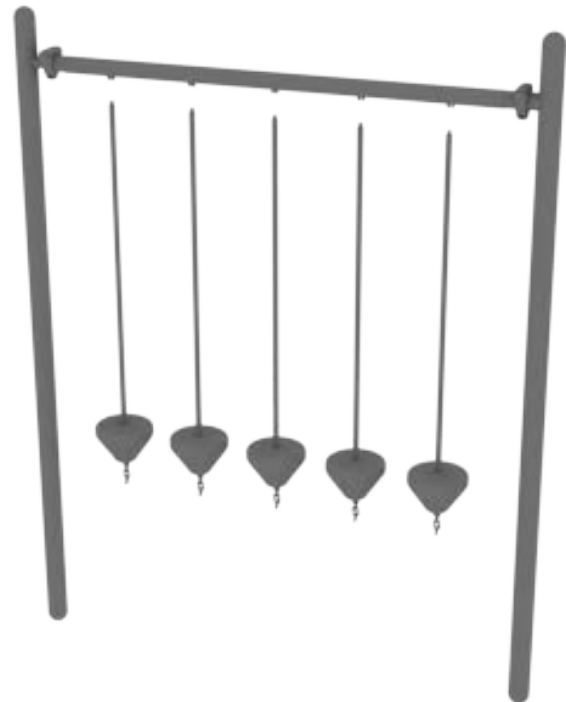
Connect the Curved Pebble Bridge top rail to the appropriate posts via the Standard Attachment Point.

Refer to the Standard Attachment Point install section for more detailed information.



STEP: 2

Dig suitable footings for each of the pebble steps. Please refer to the footing section for climbers in the General Installation Instructions document.



STEP: 3

Each of the pebble steps will attach to the top rail using one (1) M10*55 bolt, two (2) M10 washers, and one (1) M10 lock nut.



Get Physical Series - Tower of Rings Install

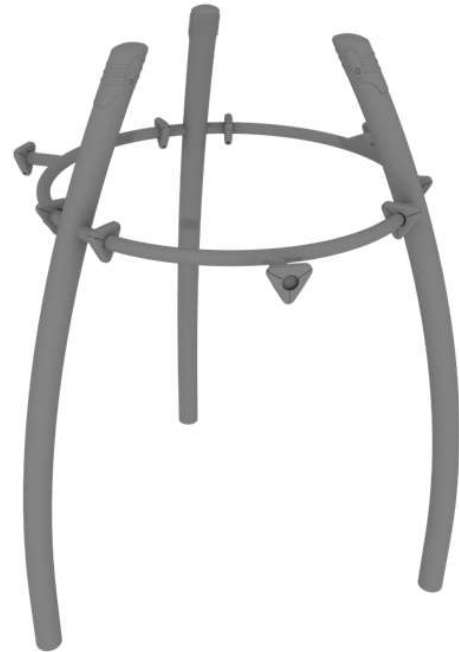
STEP: 1

To set up the Tower of Rings, first attach the top bars. Use three (3) M10*25 bolts, six (6) M10 washers, and three (3) M10 lock nuts for each attachment point.



STEP: 2

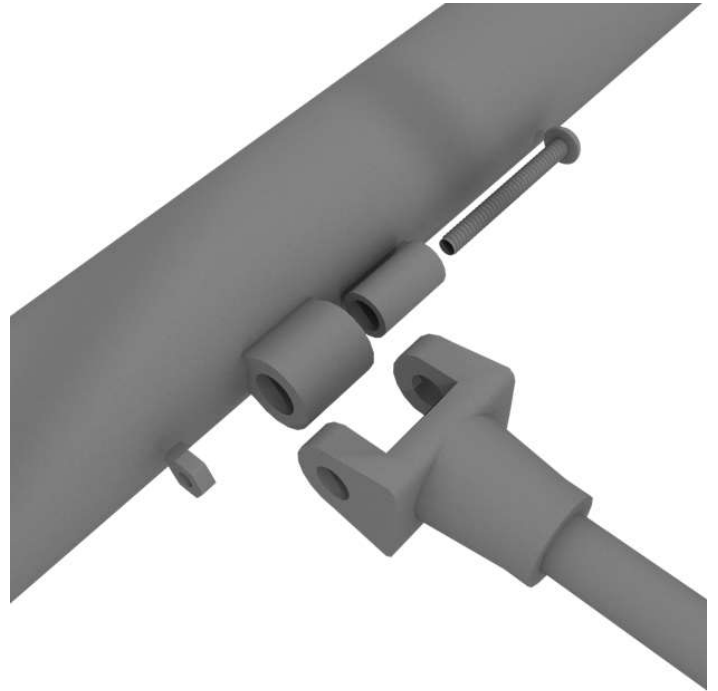
**Do not cement post until
Floating rings are installed on
structure.**



Get Physical Series - Tower of Rings Install

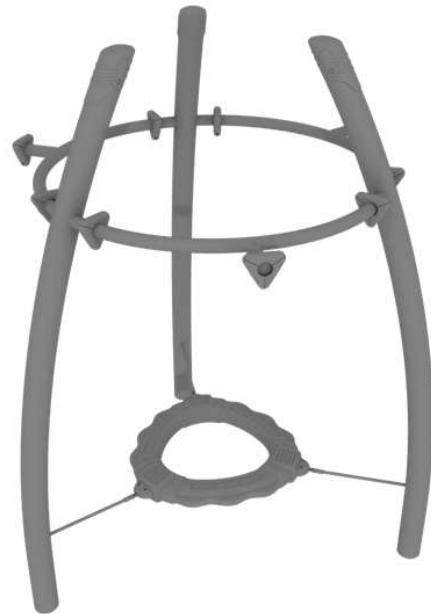
STEP: 3

To install the floating rings, connect the rings to the post using one (1) M8*50 bolt, two (2) plastic spacers, and one (1) M8 lock nut for each attachment point.



STEP: 4

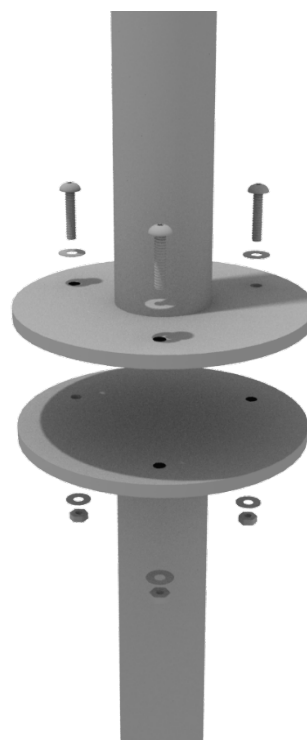
Repeat for the remaining floating rings.



Standing Orbital Spinner

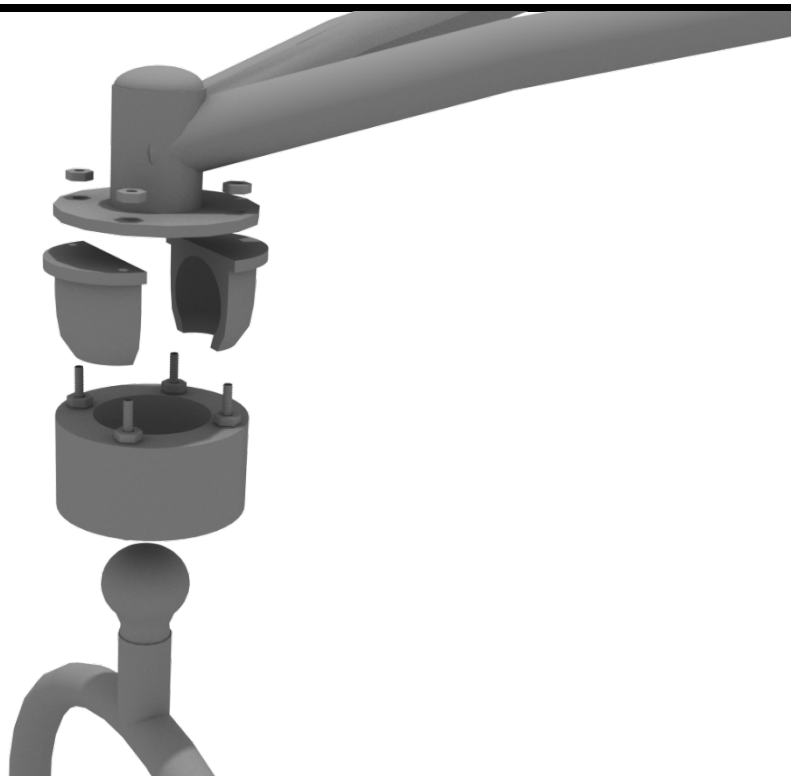
STEP: 1

Refer to the General Installation Guide regarding the spinner mount. Attach the spinner ground mount to the spinner using three (3) M10*20 bolts, three (3) M10 spring gaskets, and one (3) M10 large gaskets.



STEP: 2

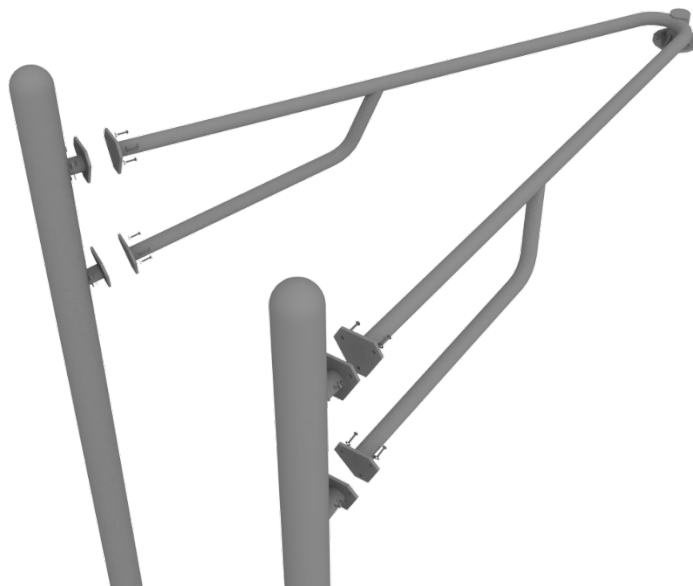
Then, attach the top connection bracket to the spinner using the pre-attached hardware.



Standing Orbital Spinner

STEP: 3

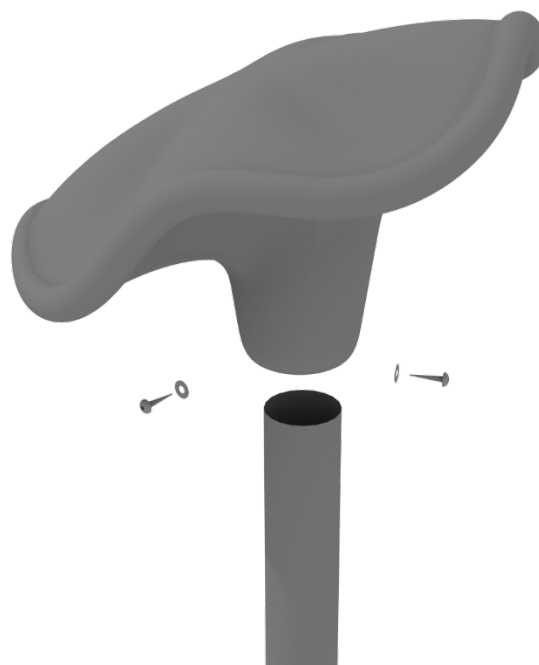
Then, attach the entire spinner to the support posts using (3) M10*25 bolts, six (6) M10 washers, and three (3) M10 lock nuts for each bracket.



Lotus Topper Installation

STEP: 1

Place the Lotus Topper onto the provided post. Use three (3) M8*45 set screws and three (3) M*8 Washers to attach the Flower Face Topper to the post.



Monkey Topper Installation

STEP: 1

The hardware and clamps come pre-attached to the Monkey Topper. To install undo the bolts holding the two halves of the Tube Clamps together, then place around the desired post and re-assemble the Tube Clamp.

