

Inground Post/Mount Installation

STEP: 1

**DO NOT CEMENT POSTS/MOUNTS
INTO PLACE UNTIL THE ENTIRE
STRUCTURE IS ASSEMBLED.**

Refer to the General Installation
guide footing size information and
digging proper holes for the support
posts/mounts.



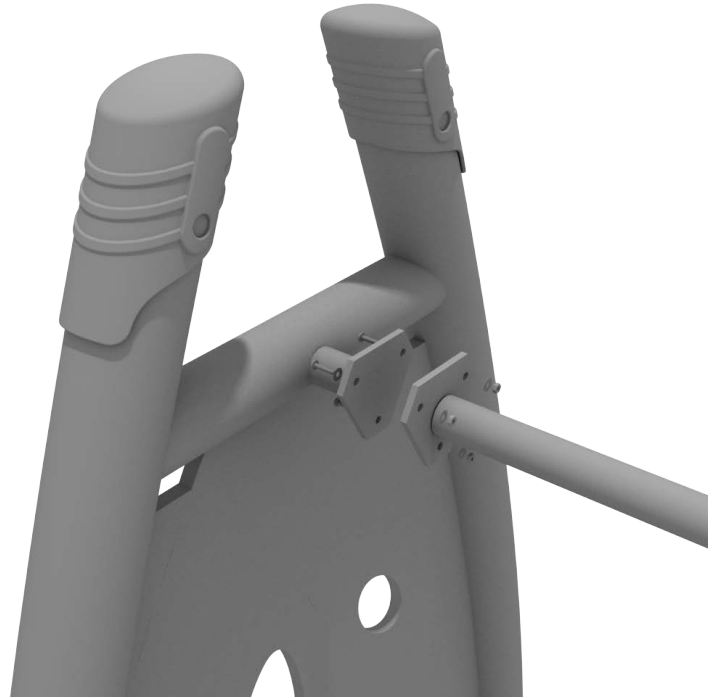
10859 E Washington St. Suite 200
Indianapolis, IN 46229
1-800-667-0097

Created By: Gage Brown
Date: 04/26/2018

Get Physical Series – Standard Attachment Point Installation

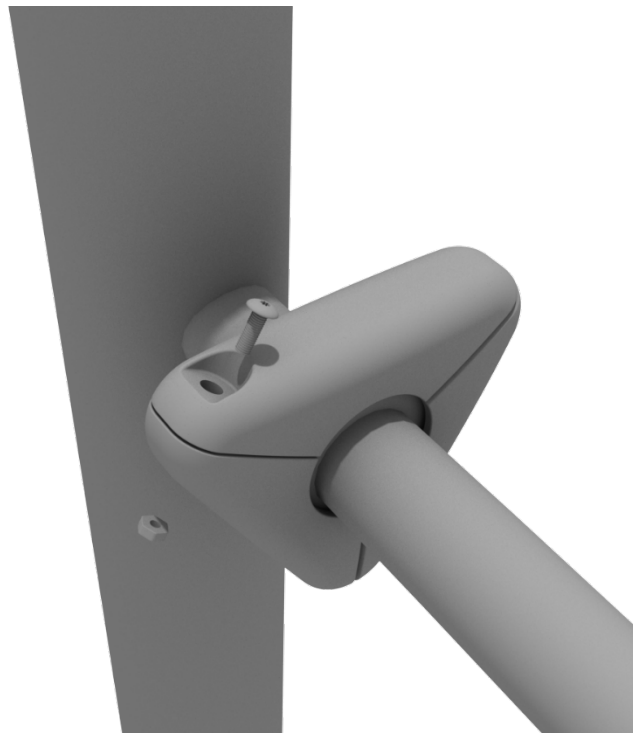
STEP: 1

Most components of a Get Physical series structure attach using this standard attachment point. Use three (3) M10*25 bolts, six (6) M10 washers, and three (3) M10 lock nuts.



STEP: 2

Each of these attachment points has a rubber cover to protect the bolts. Attach the cover and secure using the pre-attached M8*40 bolt and M8 lock nut.



Floating Net Bridge Install

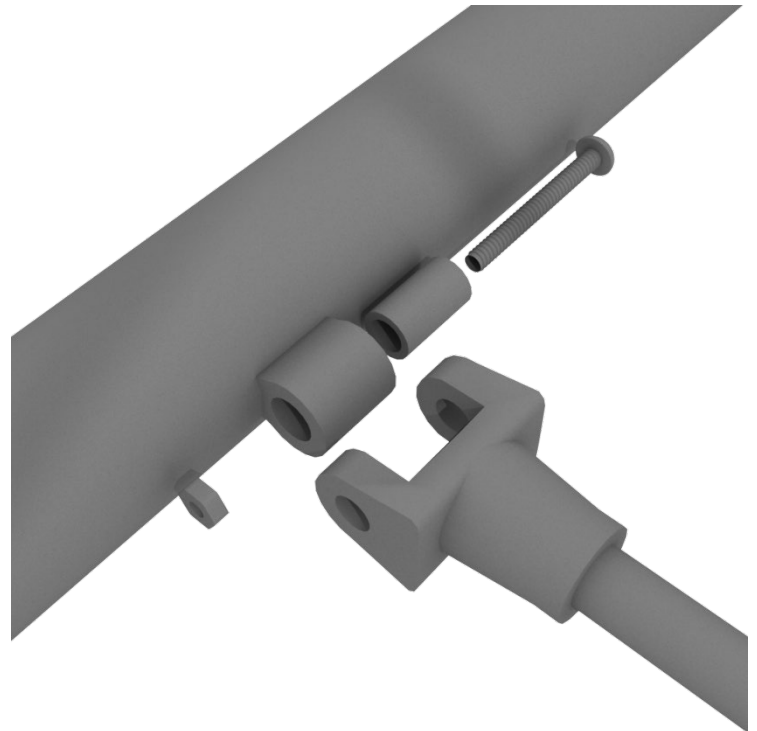
STEP: 1

Connect the Floating Net Bridge handrails to the designated post using Standard Attachment points.

Refer to the Standard Attachment Point install section for more detailed information.



Connect the net to the outer frame using one (1) M8*50 bolt, one (1) plastic spacer, and one (1) M8 lock nut for each attachment point.



Floating Net Bridge Install

Using one (1) M10*90 bolt, two (2) M10 washers, one (1) M10 Lock nut and bolt cover with cap attach net to bottom of floating Bridge for each connecting point.

Connect top of net to bridge handrails using one (1) M10*55 bolt, one (1) spacer, two (2) M10 washers and one M10 Lock Nut for each connection point.



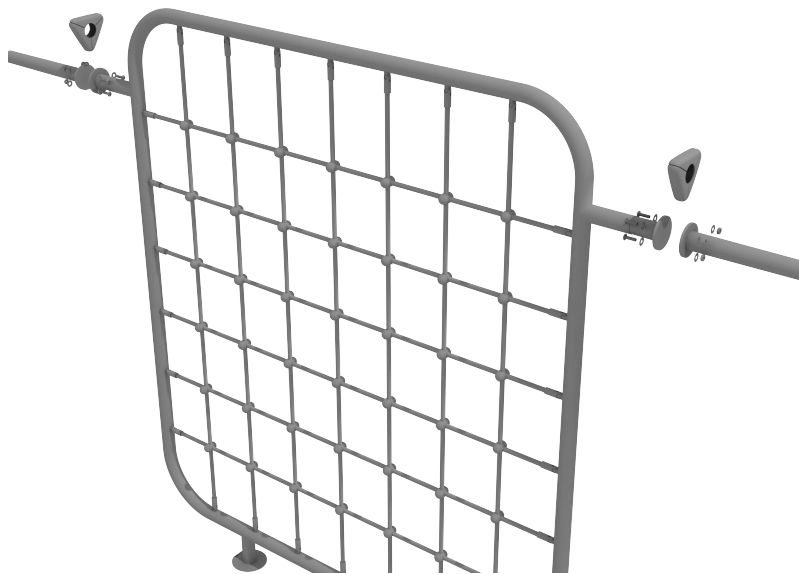
Using the last four (4) longer M10*75 Bolts and accompanying locknuts, secure the last two Crossbar Supports to the unit.



Get Physical Series – Square Net Climber Installation

STEP: 1

Connect the Square Net Climber to the appropriate posts via the Standard Attachment Points. Please refer to the Standard Attachment Point Install section for more detailed information.



Get Physical Series - Tower of Rings Install

STEP: 1

To set up the Tower of Rings, first attach the top bars. Use three (3) M10*25 bolts, six (6) M10 washers, and three (3) M10 lock nuts for each attachment point.



STEP: 2

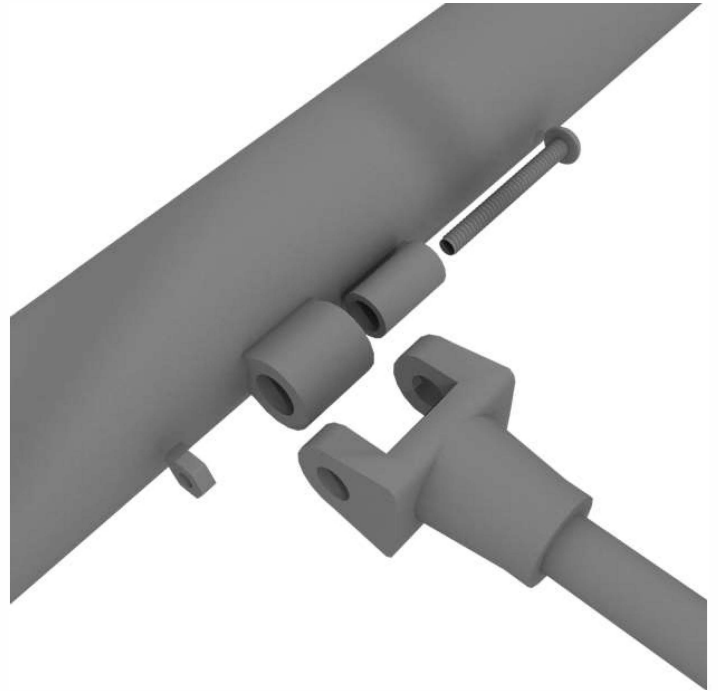
**Do not cement post until
Floating rings are installed on
structure.**



Get Physical Series - Tower of Rings Install

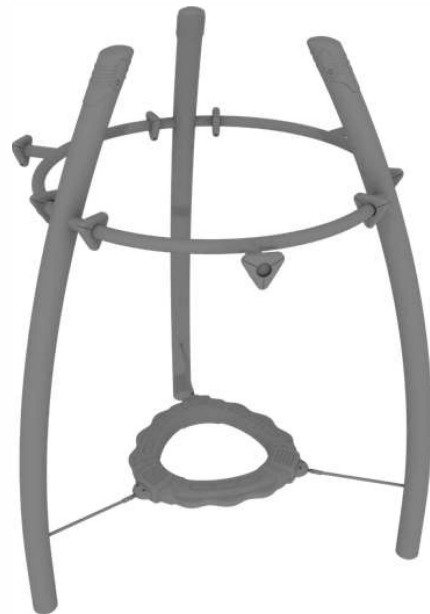
STEP: 3

To install the floating rings, connect the rings to the post using one (1) M8*50 bolt, two (2) plastic spacers, and one (1) M8 lock nut for each attachment point.



STEP: 4

Repeat for the remaining floating rings.

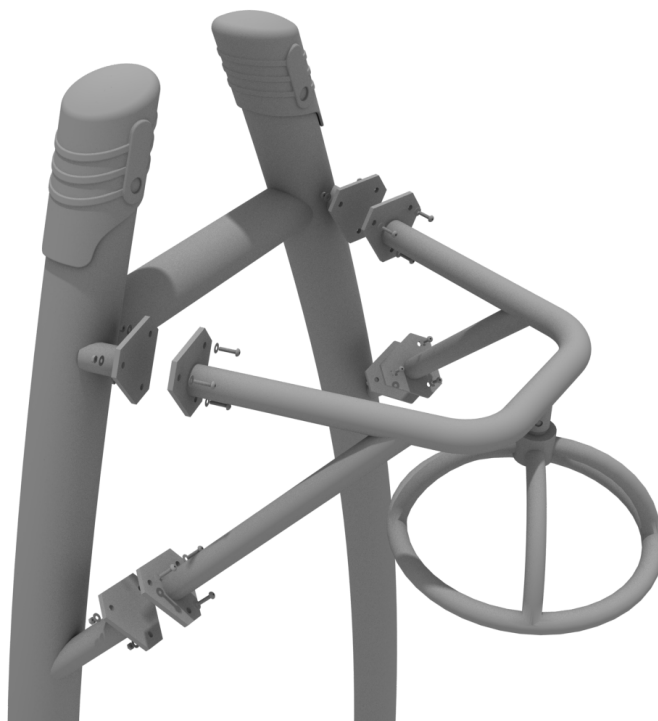


Get Physical Overhead Spinner Install

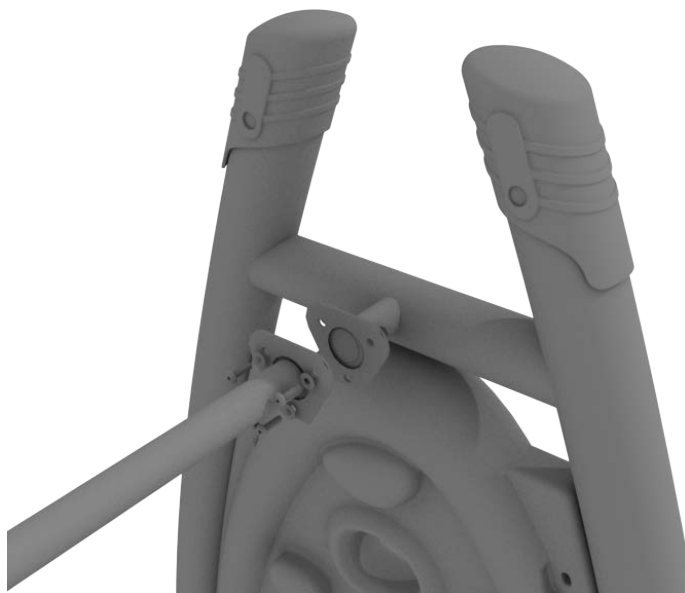
STEP: 1

The Overhead spinner will attach to the support posts via the Standard Attachment Points.

For detailed info see the Standard Attachment Point guide at the beginning of this document.

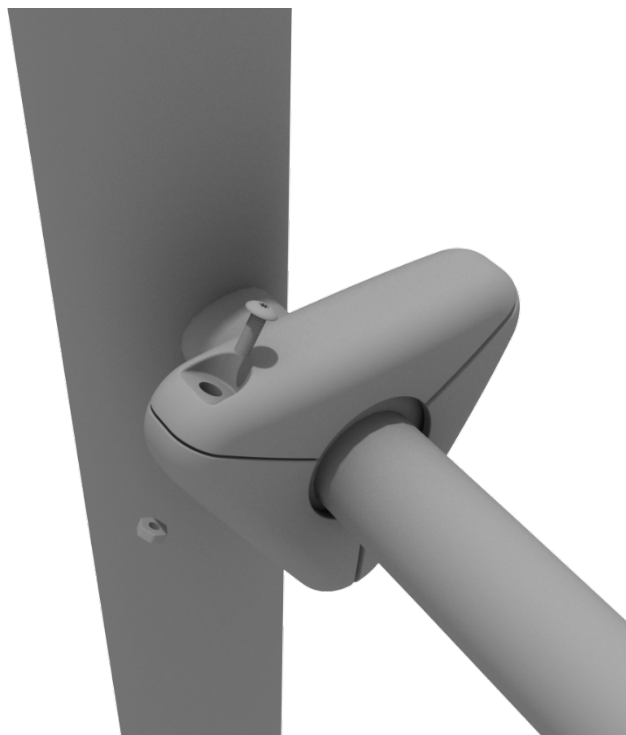


Attach using this standard attachment point. Use three (3) M10*25 bolts, six (6) M10 washers, and three (3) M10 lock nuts.



STEP: 2

Each of these attachment points has a rubber cover to protect the bolts. Attach the cover and secure using the pre-attached M8*40 bolt and M8 lock nut.



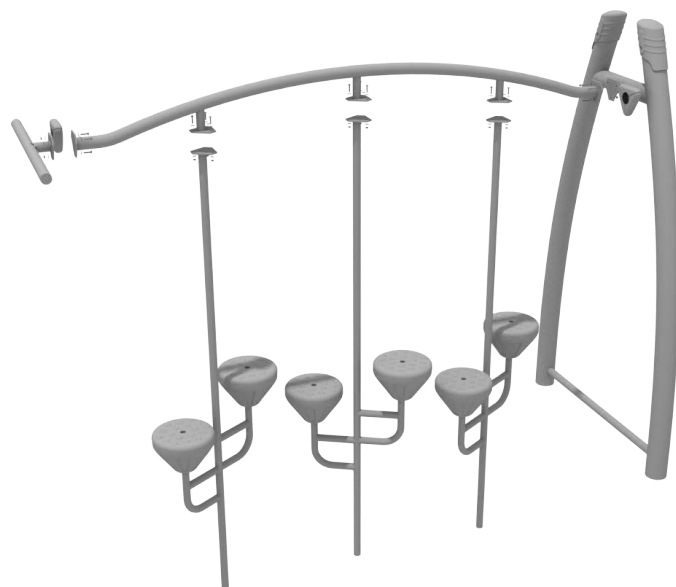
Get Physical Series – Arched Double Pebble Bridge

STEP: 1

Connect the Arched Double Pebble Bridge top rail to the appropriate standard attachment point with the provided hardware.

Refer to the Standard Attachment Point install section for more detailed information.

Dig suitable footings for each of the pebble step Supports. Please refer to the footing section for climbers in the General Installation Instructions document.



Get Physical Series –Curved Floating Bridge Install

STEP: 1

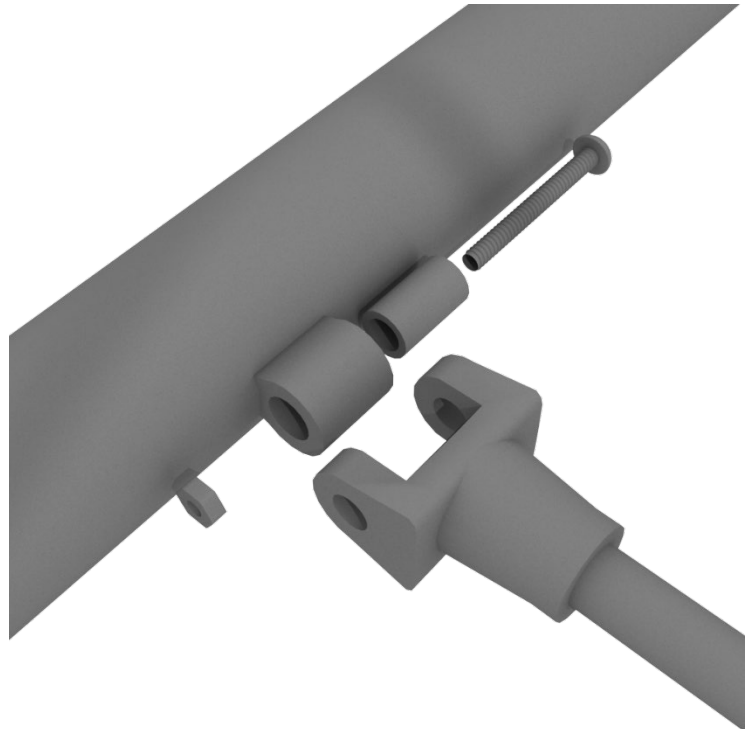
Connect the rails of the Curved Floating Bridge to the appropriate posts, and mark ground for footing locations. The Curved Floating Bridge uses the Standard Attachment points to connect to the posts.

Refer to the Standard Attachment Point guide for more details on how to connect.



STEP: 2

Connect the net to the outer frame using one (1) M8*50 bolt, one (1) plastic spacer, and one (1) M8 lock nut for each attachment point.



STEP: 3

Ensure that all connection points on the net are secured to each of the rails and bridge.

