

Inground Post/Mount Installation

STEP: 1

**DO NOT CEMENT POSTS/MOUNTS
INTO PLACE UNTIL THE ENTIRE
STRUCTURE IS ASSEMBLED.**

Refer to the General Installation
guide footing size information and
digging proper holes for the support
posts/mounts.



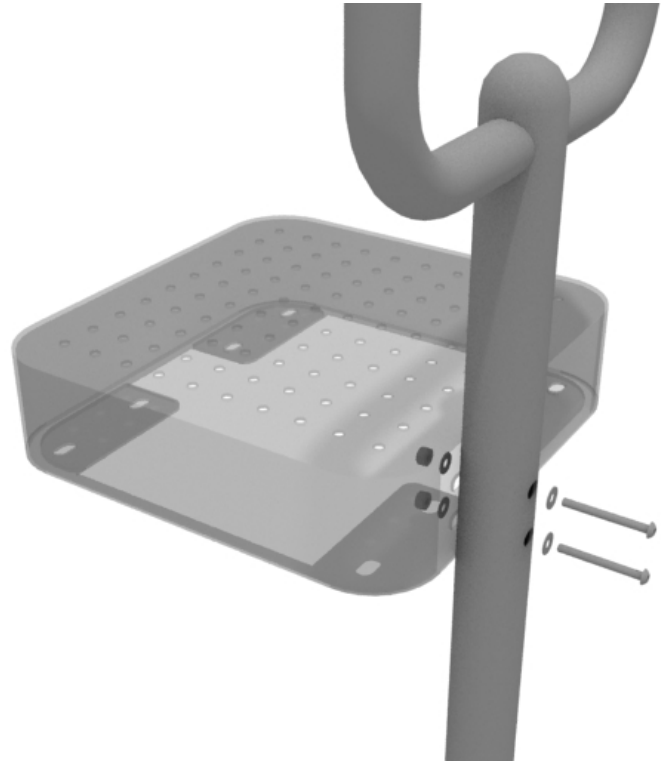
10859 E Washington St. Suite 200
Indianapolis, IN 46229
1-800-667-0097

Created By: Gage Brown
Date: 04/26/2018

210913-LH-1-CR001 Install

STEP: 2

See general installation guide regarding footing information for the deck handrail & mount. Using two (2) M10*65 bolts, four (4) M10 washers, and two (2) M10 lock nuts, attach the handrail to the deck.



STEP: 3

Using two (2) M10*25 bolts, four (4) M10 washers, and two (2) lock nuts, attach the deck mount to the deck.

