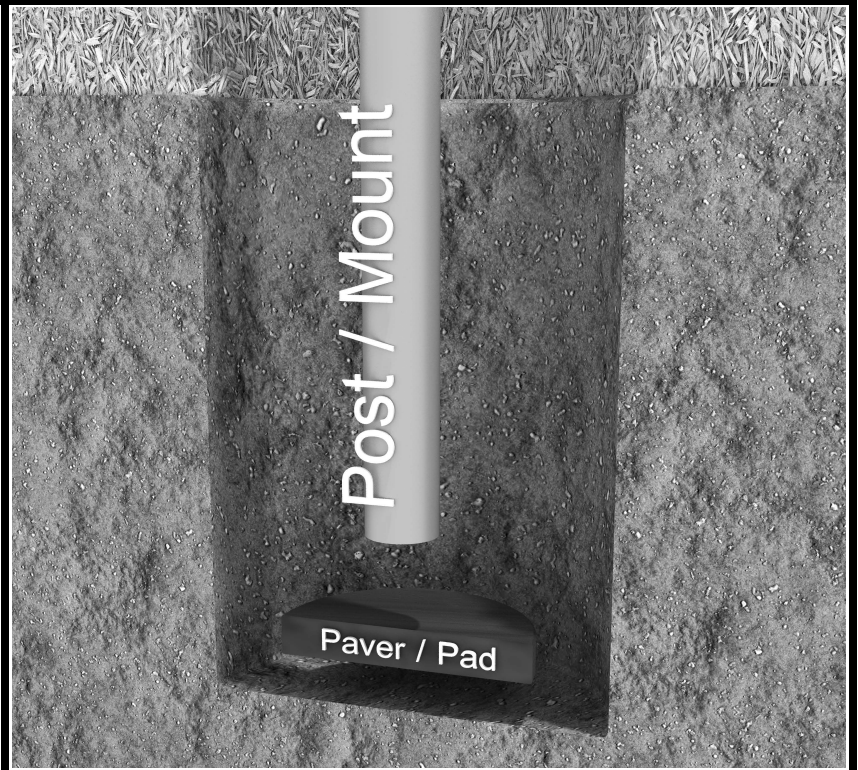


# Inground Post/Mount Installation

## STEP: 1

**DO NOT CEMENT POSTS/MOUNTS  
INTO PLACE UNTIL THE ENTIRE  
STRUCTURE IS ASSEMBLED.**

Refer to the General Installation  
guide footing size information and  
digging proper holes for the support  
posts/mounts.



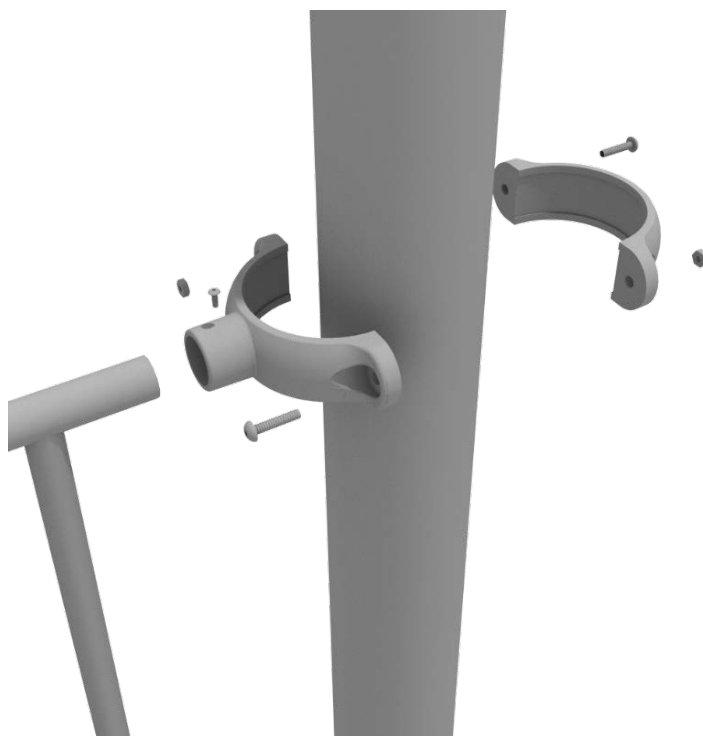
10859 E Washington St. Suite 200  
Indianapolis, IN 46229  
1-800-667-0097

Created By: Gage Brown  
Date: 04/26/2018

## 5.0-inch Clamp Installation Guide

### 5.0-inch Tube Clamp

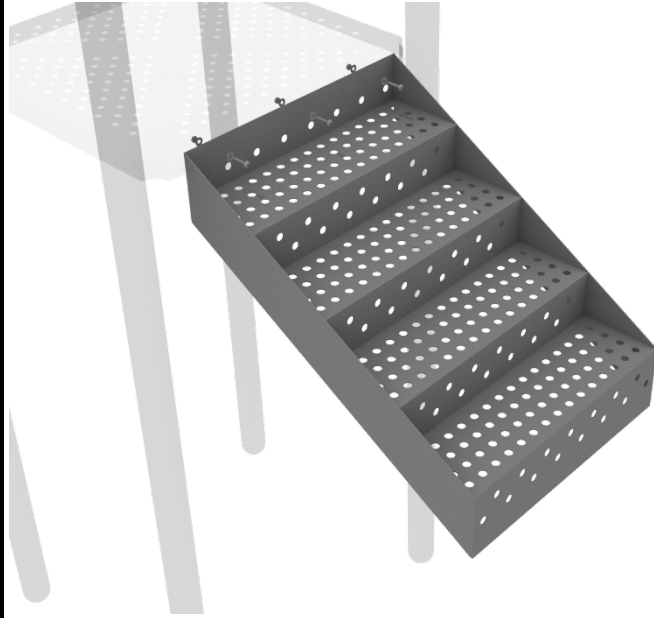
Insert Bar on Component into one half of the Tube Clamp and attach with M4\*25 Set Screw. Then, using the other half of the tube clamp and the hardware provided in the clamp hardware bag, attach the other half of the tube clamp around the post.



## 5.0-inch 4-foot Transfer Station Install

### STEP: 1

Using three (3) M10\*25 Bolts, six (6) M10 Washers, and three (3) M10 Lock Nuts, attach the top of the stairs to the half hex deck.



### STEP: 2

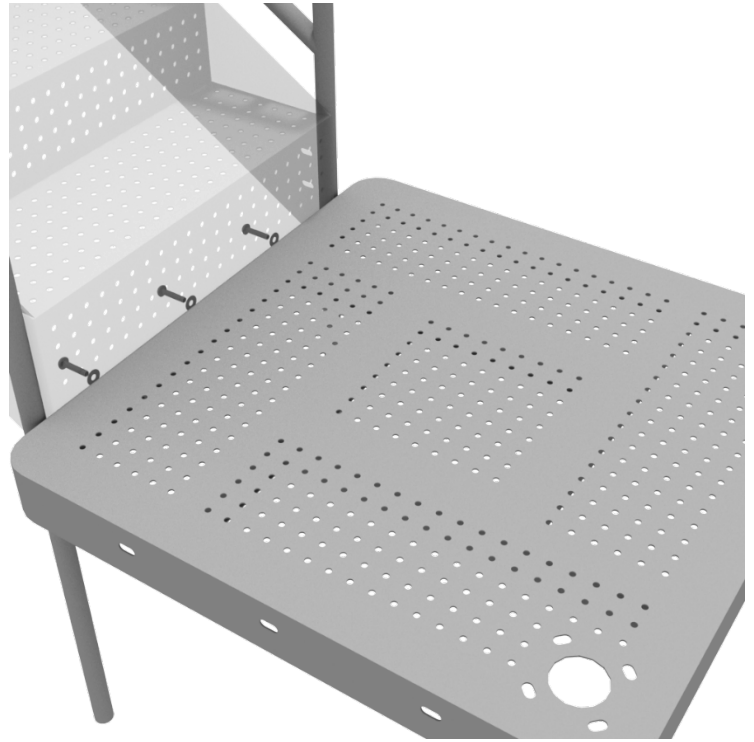
Attach the ADA Transfer Stair Handrails to the posts using Tube Clamps. Then using six (6) M10\*25 Bolts, twelve (12) M10 Washers, and six (6) M10 Lock Nuts, attach the handrail to the bottom and side of the stairs.



## 5.0-inch 4-foot Transfer Station Install

### STEP: 3

Using three (3) M10\*25 Bolts, six (6) M10 Washers, and three (3) M10 Lock Nuts, attach the ADA transfer deck to the base of the 4-foot ADA transfer stair.



### STEP: 4

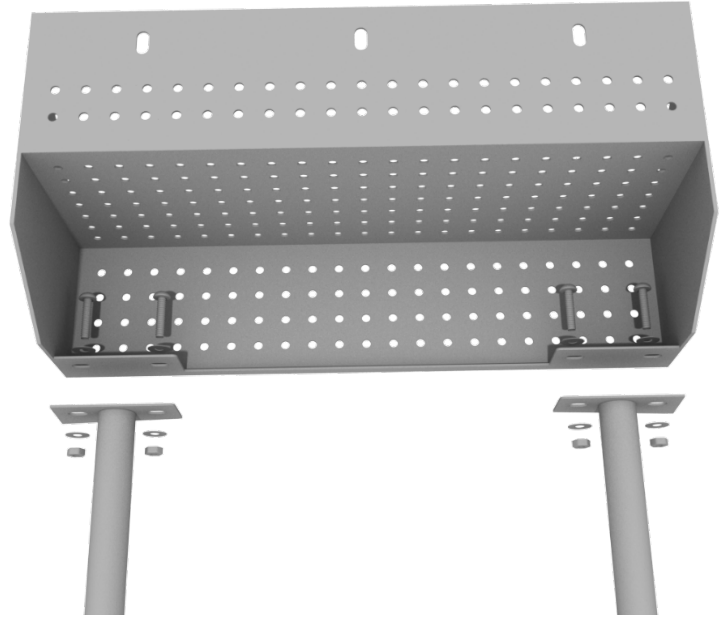
See general installation guide regarding footing information for the transfer deck handrail. Using four (4) M10\*25 Bolts, eight (8) M10 Washers, and four (4) M10 Lock Nuts, attach each transfer deck handrail to the ADA transfer deck.



## 5.0-inch 4-foot Transfer Station Install

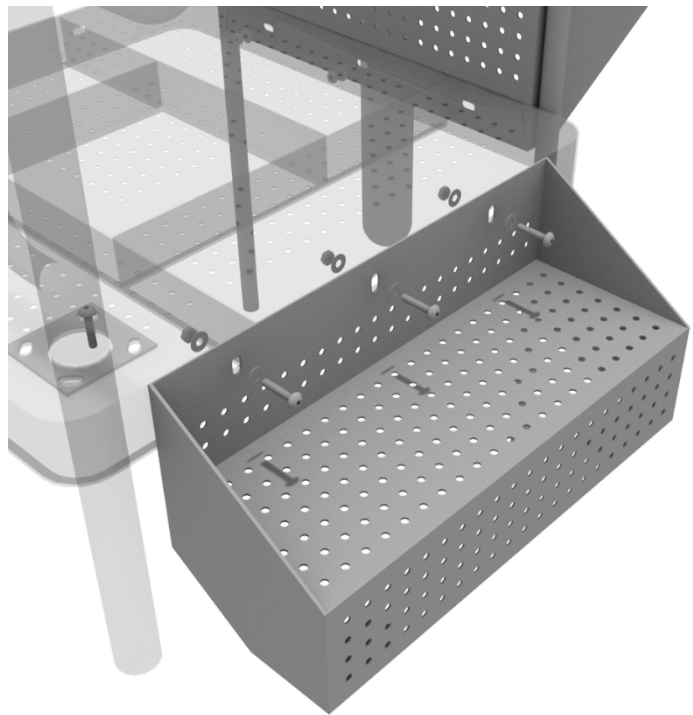
### STEP: 5

See general installation guide regarding footing information for the ADA transfer step mount. Using two (2) M10\*25 Bolts, four (4) M10 Washers, and two (2) M10 Lock Nuts, attach the transfer step to each ADA transfer step mounts.



### STEP: 6

Using three (3) M10\*25 Bolts, six (6) M10 Washers, and three (3) M10 Lock Nuts, attach the top of the ADA transfer step to the ADA transfer deck.

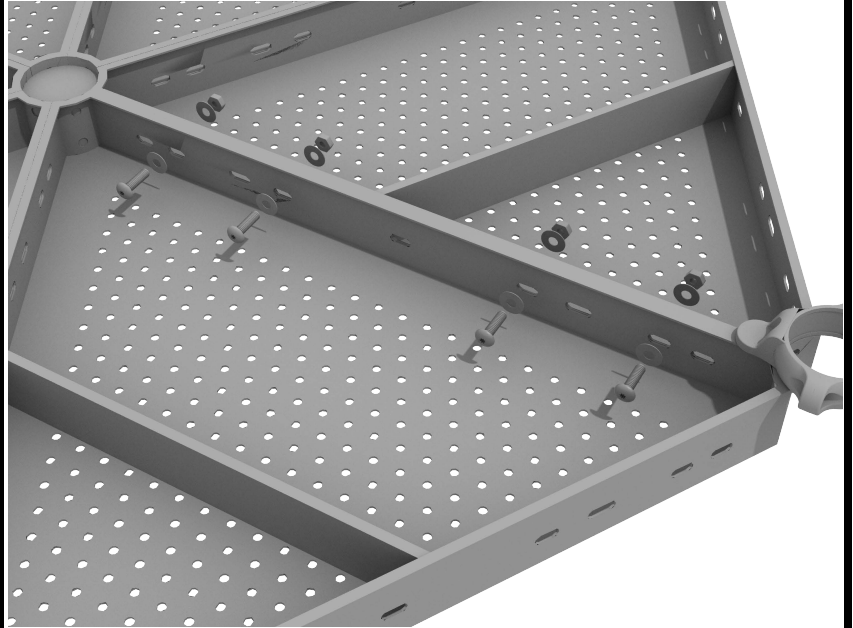




# Half Hex Deck Connect to Half Hex Deck

## STEP: 1

When installing decks that are adjacent to one another at the same height, they should be bolted together. On the underside of the deck, install using four (4) M10\*25 Bolts, eight (8) M10 Washers, and four (4) M10 Lock Nuts. Repeat this process for every set of adjacent decks.



# Half Hex Deck Installation

## STEP: 1

After the posts are in place, using five (5) M10\*35 bolts, ten (10) M10 washers, and five (5) M10 lock nuts, attach the deck to each pre-attached deck clamps as shown in the image.

Deck clamps are pre-attached to the posts and should not be altered in any way.



# Triangle Deck Installation

## STEP: 1

After the posts are in place, using three (3) M10\*35 bolts, six (6) M10 washers, and three (3) M10 lock nuts, attach the triangle deck to each pre-attached deck clamp as shown in the image.

Deck clamps are pre-attached to the posts and should not be altered in any way.

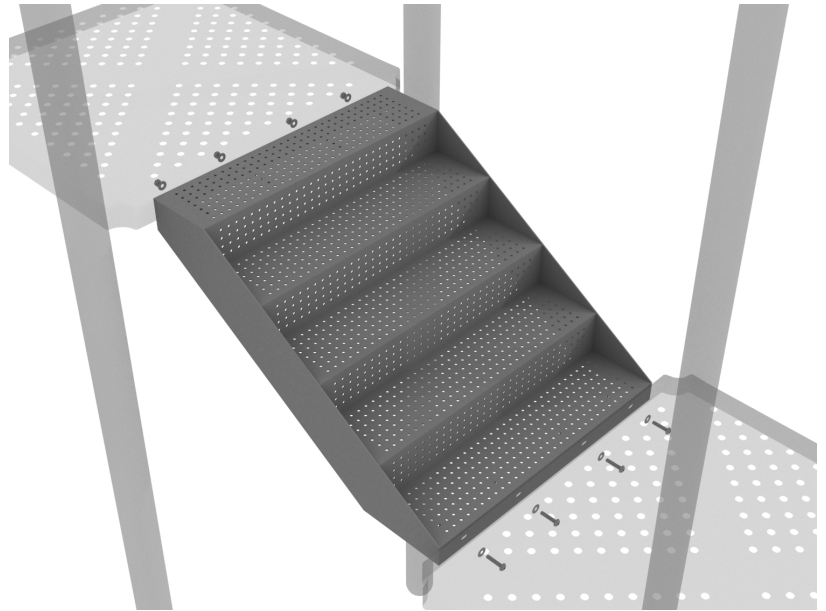




## 5.0-inch 2-Foot Middle Stair Install

### STEP: 1

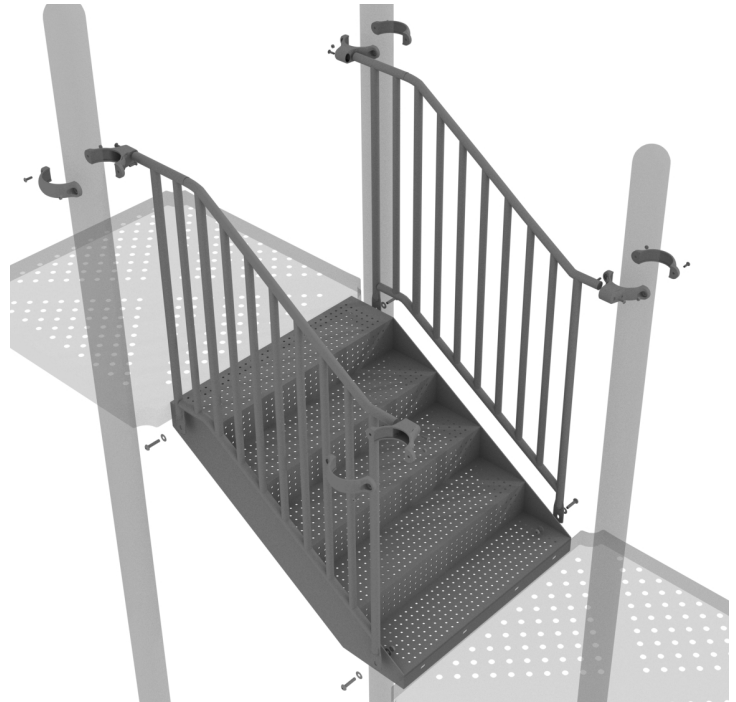
Using eight (8) M10\*25 Bolts, sixteen (16) M10 Washers, and eight (8) M10 Lock Nuts, connect the middle stair from one deck to the next.



### STEP: 2

Connect half of each 5.0-inch tube clamp to the middle handrail using one (1) M8\*35 Bolt. Set the handrail into place, then attach the second half of the clamp using the hardware provided in the clamp bag. Repeat this process for the other handrail.

Then, using two (2) M10\*25 Bolts, four (4) M10 Washers, and two (2) M10 Lock Nuts, attach the bottom of the handrail to the side of the stair.

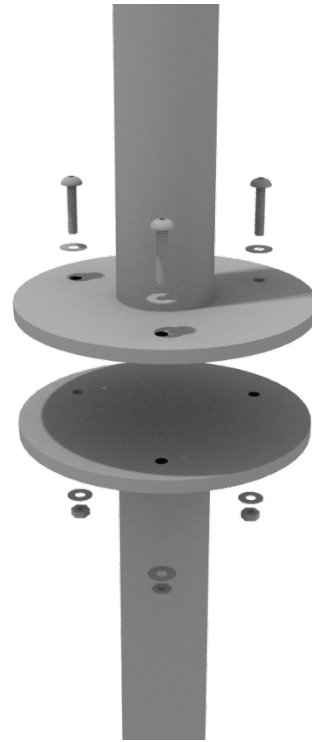


# Pod Climber Installation

## STEP: 1

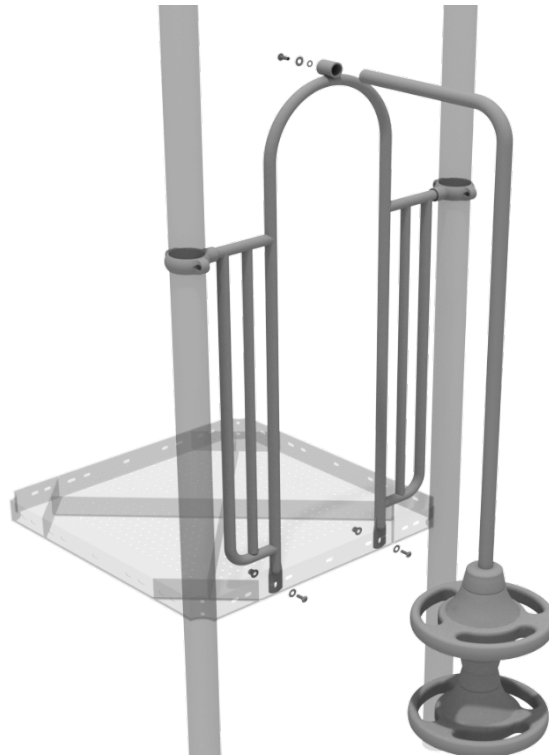
See general installation guide regarding footing information for the pod climber. Attach the circle end mount to the bottom of the climber using the pre-attached hardware.

Each attachment uses three (3) M10\*20 bolts, three (3) M10 spring gaskets, and one (3) M10 large gaskets.



## STEP: 2

Attach the top of the climber to the designated arch rail top bracket using one (1) M10\*20 bolt, one (1) M10 spring washer, and one (1) M10 washer.

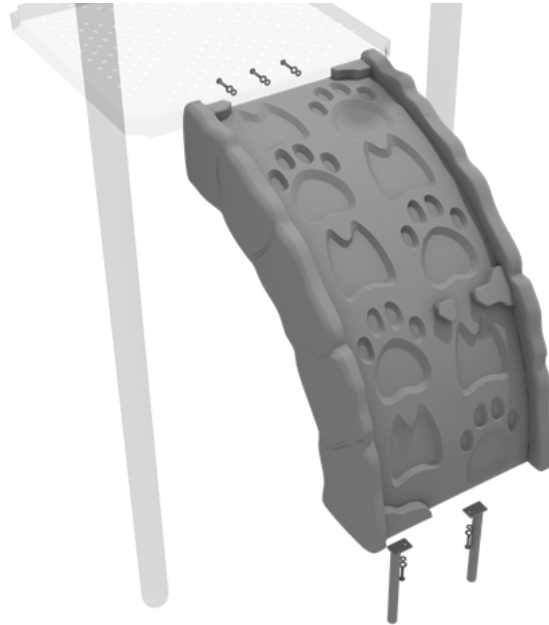


# Paw Print Climber Installation

See general installation guide regarding footing information for climbers.

Using two (2) M10\*20 Bolts, two (2) M10 Spring Gaskets, and two (2) M10 Washers, attach the bottom of the Paw Print climber to the climber support posts.

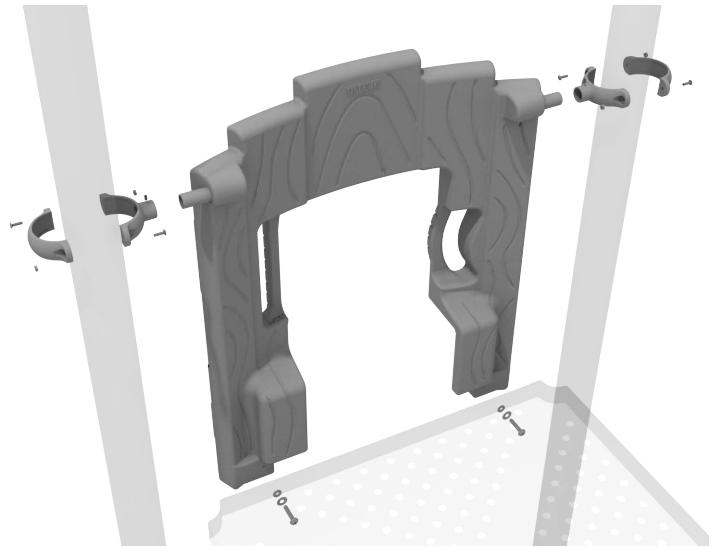
Then, using three (3) M10\*35 Bolts, three (3) M10 Spring Washers, and three (3) M10 Washers, attach the Paw Print climber to the deck.



# 6-Foot Tree House Left Turn Slide Installation

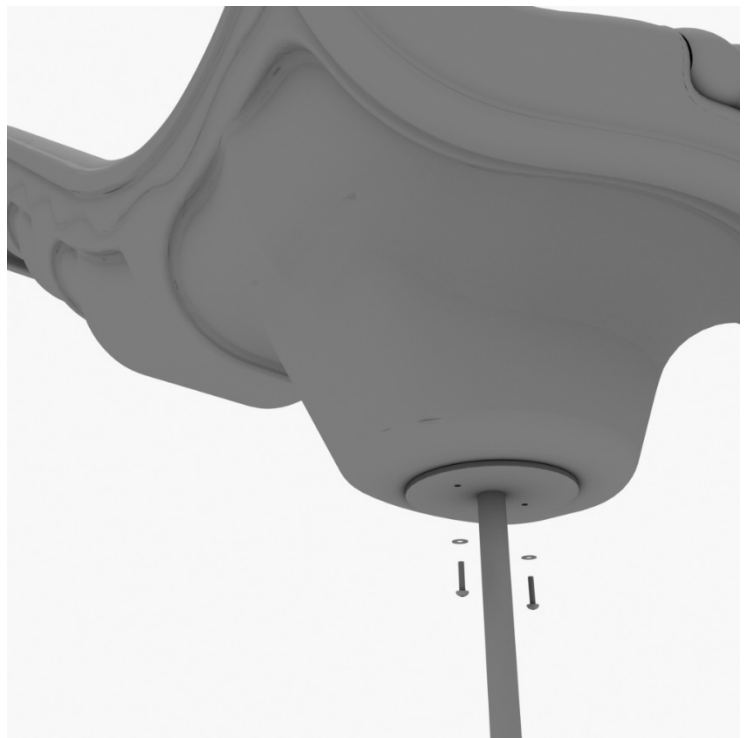
## STEP: 1

To attach the tree house slide hood to a deck, take two tube clamps and attach them to the posts using two (2) M4\*25 self-tapping screws. Then, attach the hood to the deck using two (2) M10\*20 bolts, two (2) spring washer, four (4) M10 washers, and two (2) M10 lock nuts. Repeat this process for every single slide hood.



## STEP: 2

See general installation guide regarding footing information for the slide end mount. Using two (2) M8\*20, two (M8) spring washers. And two (2) M8 washers, attach the slide to the slide support post.



# 6-Foot Tree House Left Turn Slide Installation

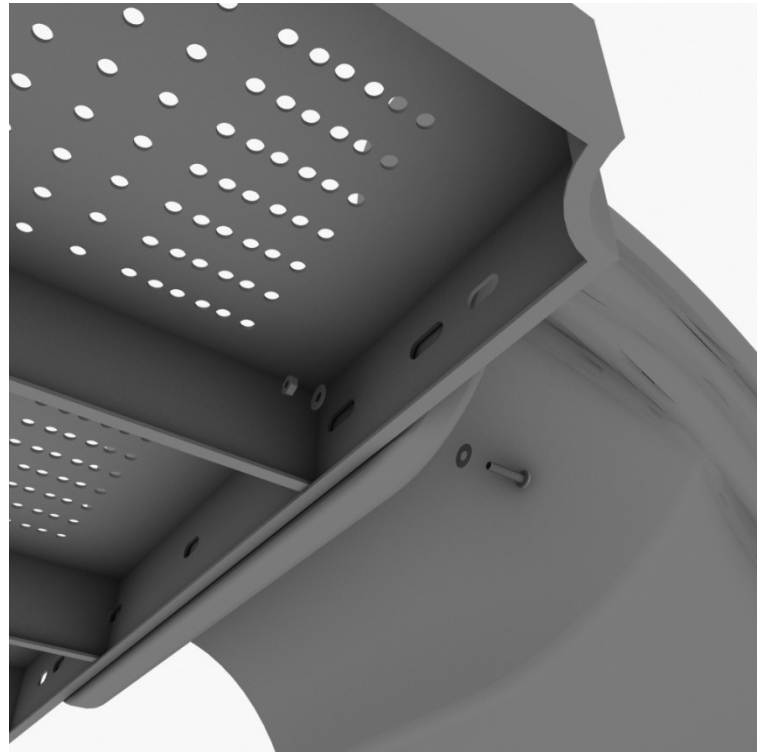
## STEP: 3

See general installation guide regarding footing information for the middle slide support. Loosen the set screw pre-attached to the slide support bracket and insert the L-shaped slide support. Then screw the set screws back into place.



## STEP: 4

To attach a single slide to a deck, use two (2) M10\*45 bolts, four (4) M10 washers, and two (2) M10 lock nuts. Repeat this process for the other side of the slide. Repeat this process for each single slide.



# 6-Foot Tree House Left Turn Slide Installation

## STEP: 5

Using two (2) M8\*45 bolts, two (2) M8 washer, two (2) M12 washers, and one (1) M12 inner hex spiral nut, attach the slide to the slide hood. Repeat this process for the other side of the slide.

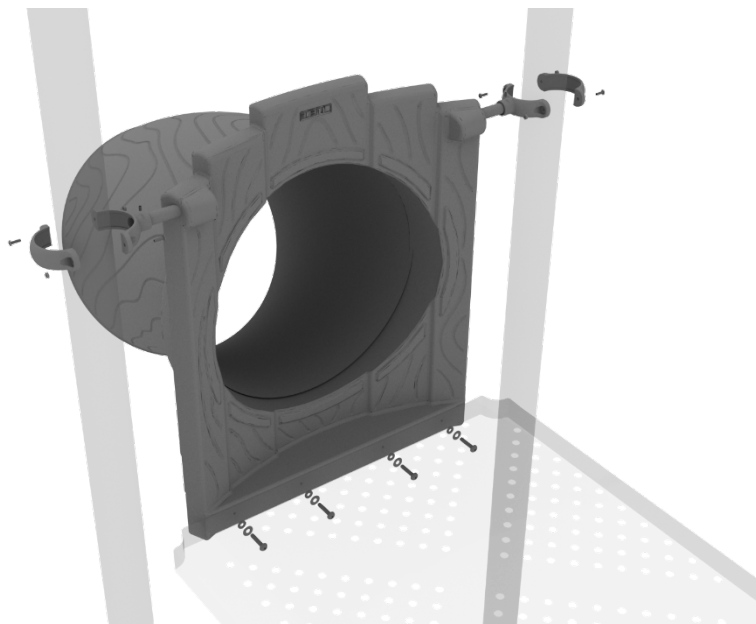




# Treehouse Turn Tube Slide Installation

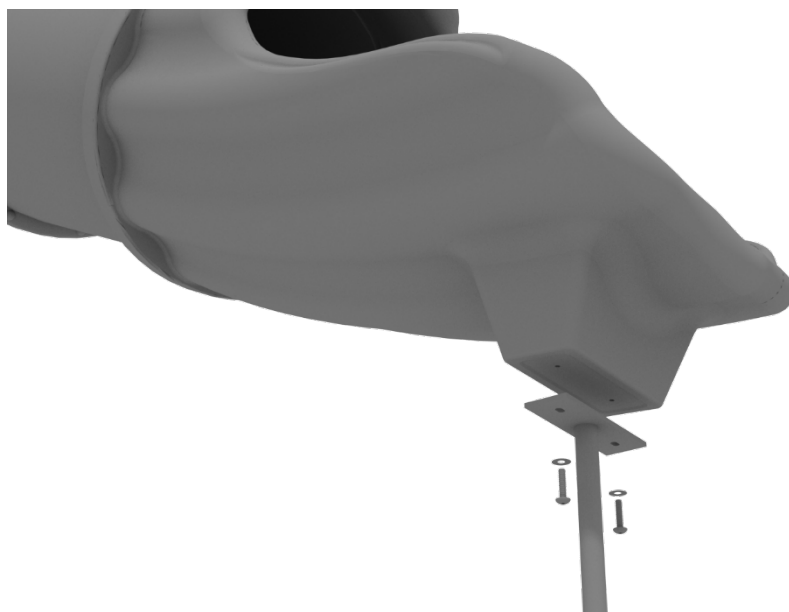
## STEP: 1

Attach the Slide Entrance Panel to the designated posts using two (2) tube clamps and two (2) M4\*25 Set Screws. Then, attach the bottom of the panel to the deck using four (4) M10\*20 Bolts, four (4) M10 Washers, and four (4) M10 Lock Nuts.



## STEP: 2

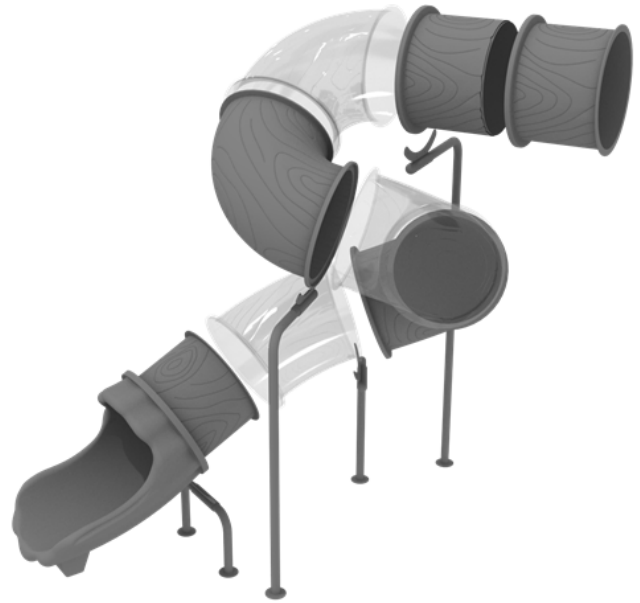
See general installation guide regarding footing information for the tube slide mount. Attach the slide end mount to the bottom of the slide using four (4) M10\*20 Bolts, four (4) M10 Spring Washers, and four (4) M10 Washers.



# Treehouse Turn Tube Slide Installation

## STEP: 3

Finally, connect the tube slide together using ten (10) M8\*30 Bolts, ten (10) M8 Washers, and ten (10) M8 Lock Nuts for each connection point.



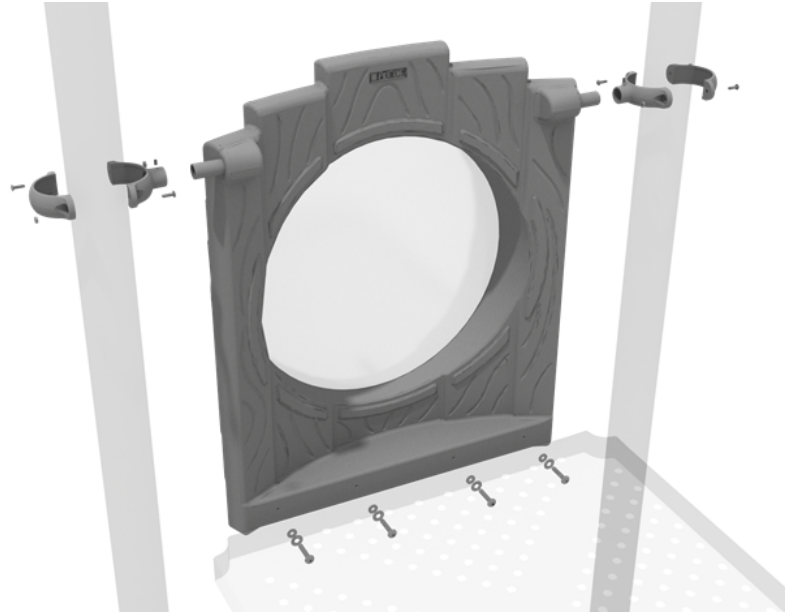
## STEP: 4

Attach the tube slide supports to the slide support brackets by inserting the support into the slot of the support bracket under the slide and tighten the Set Screws to secure.



# 5.0-inch Treehouse Bubble Panel Installation

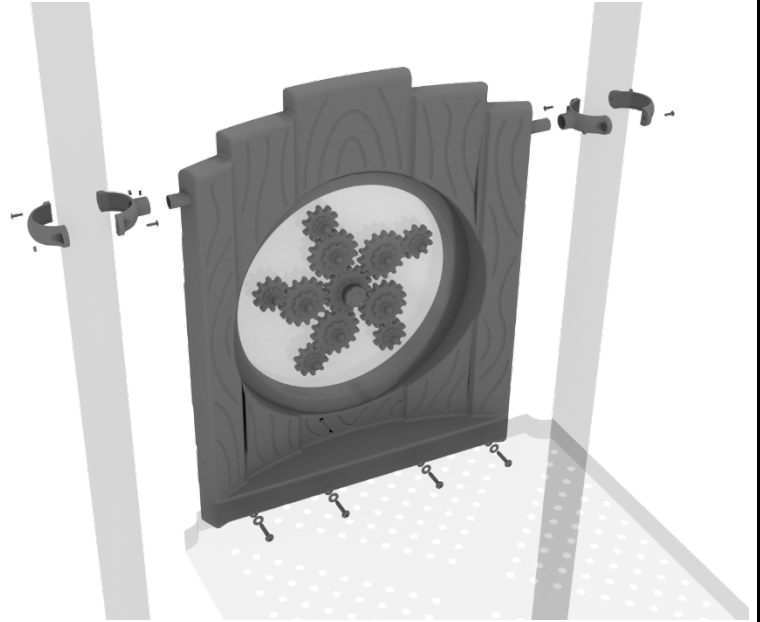
Attach the Tree house Bubble Panel to the designated posts using two (2) tube clamps and two (2) M4\*25 Set Screws. Then, attach the bottom of the panel to the deck using four (4) M10\*20 Bolts, four (4) M10 Washers, and four (4) M10 Lock Nuts.



# 5.0-inch Treehouse Gear Panel Installation

## STEP: 1

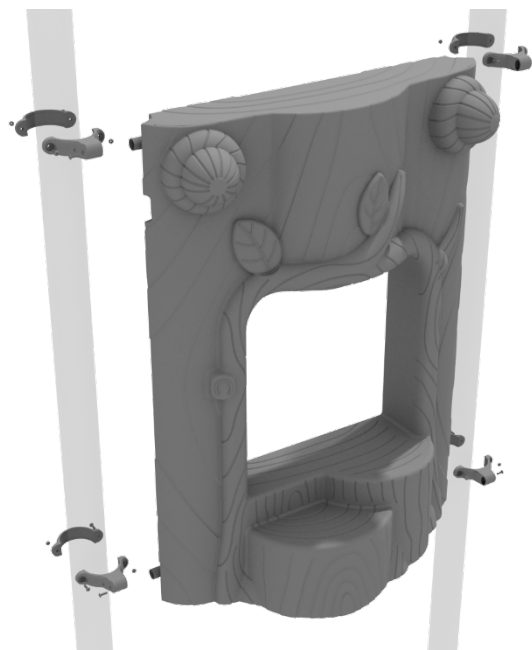
Attach the Treehouse Gear Panel to the designated posts using two (2) tube clamps and two (2) M4\*25 Set Screws. Then, attach the bottom of the panel to the deck using four (4) M10\*20 Bolts, four (4) M10 Washers, and four (4) M10 Lock Nuts.



# Treehouse Stump Store Panel Installation

## STEP: 1

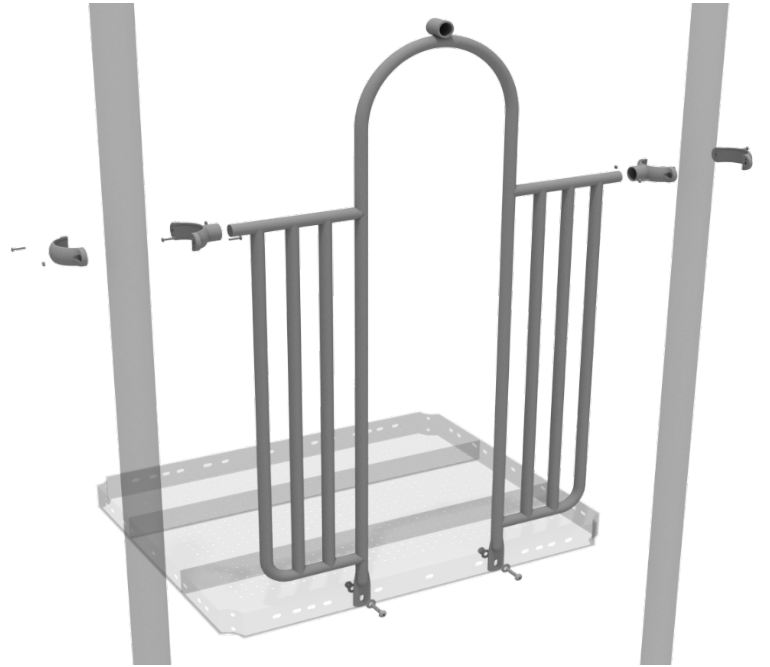
Attach the Treehouse Stump Store Panel using four (4) M4\*25 Set Screws for the four (4) tube clamps, clamping around the appropriate post.



## 5.0-inch 2-Clamp Arch Rail Installation

### STEP: 1

Attach the Arch Rail to the designated posts by connect half of the tube clamp to the arch rail using one (1) M8\*30 bolt. Repeat this process for each post attachment point. Then, attach the rail to the deck using two (2) M10\*25 bolts, four (4) M10 washers, and two (2) M10 lock nuts. Finally, attach the second half of the clamp around the post.

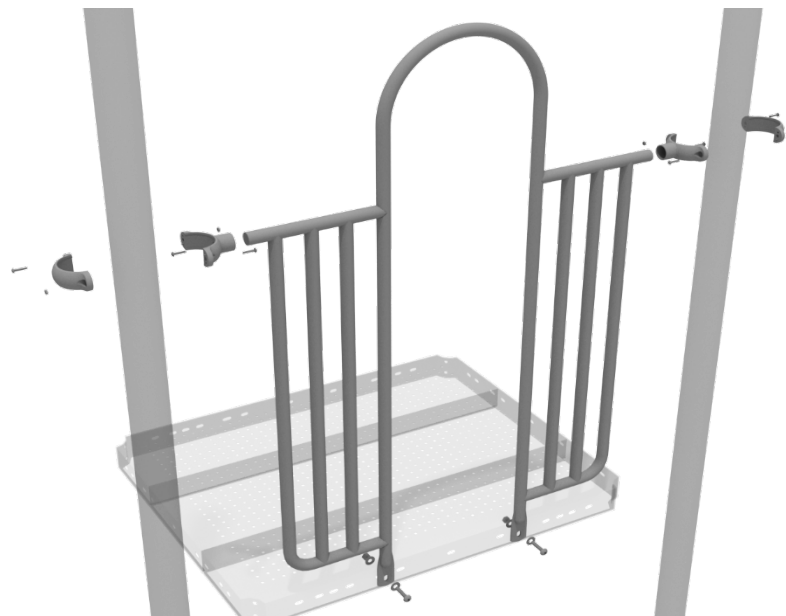




## 5.0-inch 2-Clamp Arch Rail Installation

### STEP: 1

Attach each two-clamp arch rail to the designated deck by using two 5.0-inch Tube Clamps. Then use two (2) M10\*25 Bolts, four (4) M10 Washers, and two (2) M10 Lock Nuts to attach the panel to the deck.

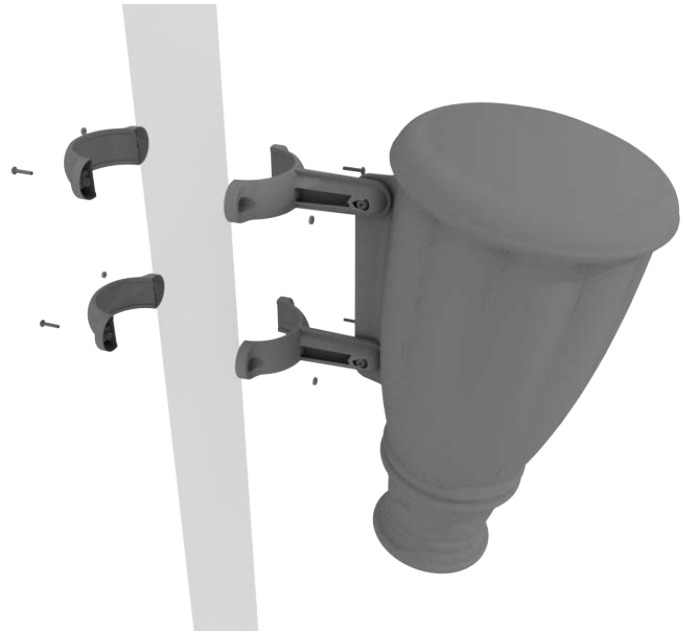


# Single Drum Installation

Detach half of the tube clamps connected to the Single Drum, and re-attach the clamps around the support post, as shown in the image. Recommended install height is 20 to 36 inches above surfacing depending on age range.

*We recommend using Thread-locking fluid on bolts connecting Single Drum to clamp to prevent hardware from loosening over time.*

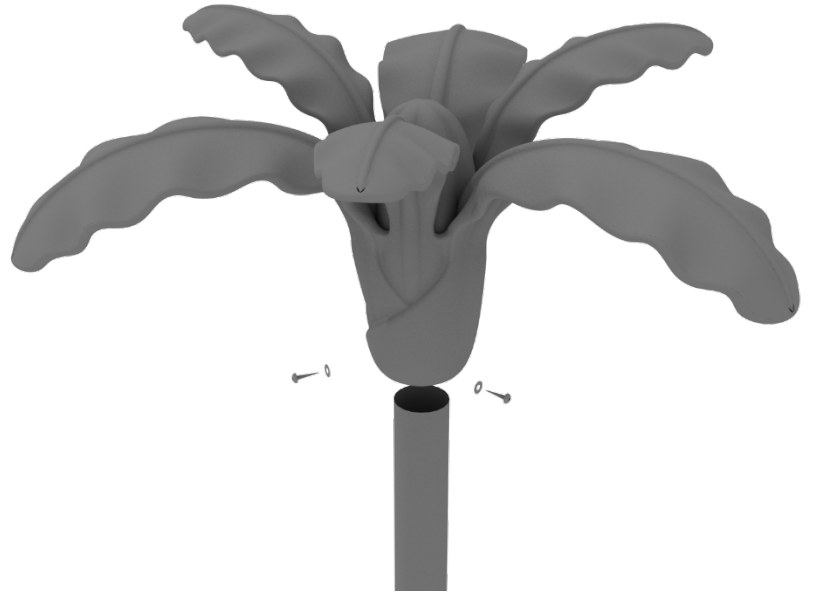
(Thread-locker not supplied)



# Palm Tree Topper Installation

## STEP: 1

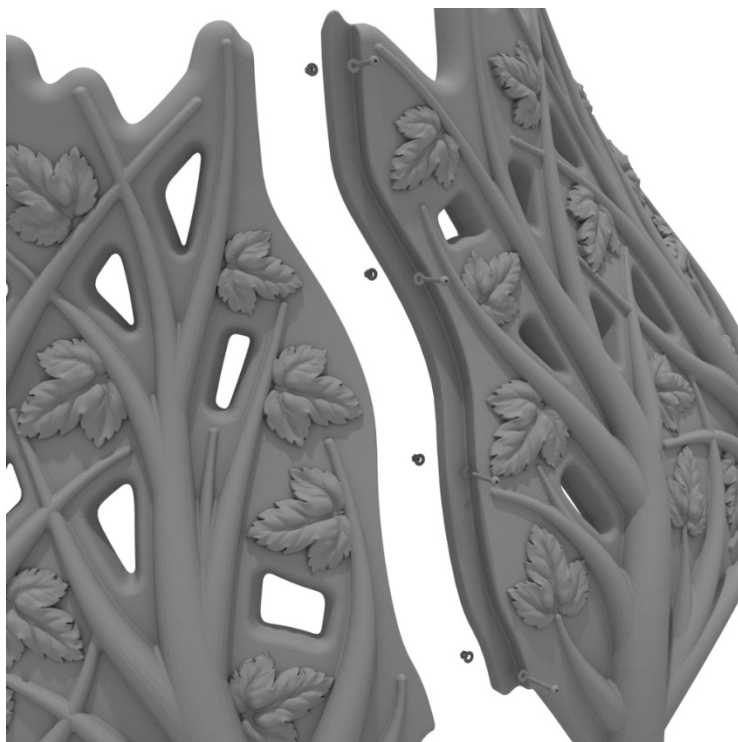
Place the Palm Tree Topper onto the provided post. Use three (3) M8\*50 set screws and three (3) M\*8 Washers to attach the Flower Face Topper to the post.



# Hex Branch Roof Install Guide

## STEP: 1

The Hex Branch Roof comes in 6 individual sections that must be assembled. Each section will connect using four (4) M8\*90 bolts, eight (8) M8 washers, and four (4) M8 lock nuts for each seam.



## STEP: 1

Set the assembled Hex Branch Roof onto the top of the appropriate posts.



## STEP: 1

Use the provided self-tapping screws and washers to attach to the post.

