



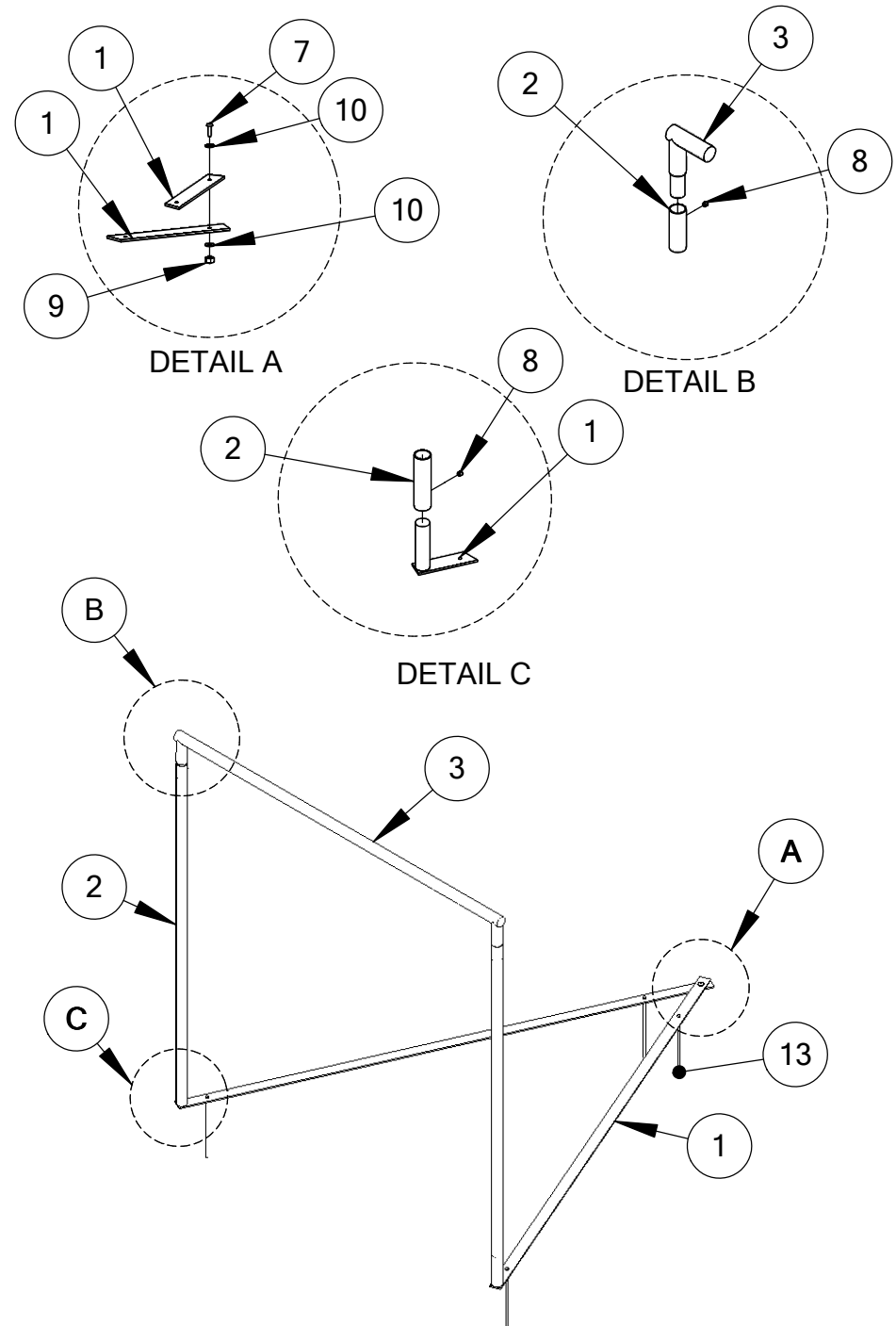
LaCROSSE GOAL (PORT.)

562-605

ITEM NO.	PART NUMBER	DESCRIPTION	QTY.
1	563-508	Base Half	4
2	563-505	Upright	4
3	563-507	Cross Bar	2
4	905-517	3/8" x 12" Spike	4
5	565-932	Nets (pair)	1
7	126-701	3/8" x 1-1/4" Button Head Bolt	2
8	196-807	3/8" x 3/8" Socket Set Screw	8
9	226-602	3/8" Nylon Insert Lock Nut	2
10	316-601	3/8" Flat Washer	4
11	416-350	3/16" Socket Key	1
12	416-505	7/32" Long Arm Socket Key	1
13	905-517	3/8" x 12" Spike	10
14	905-518	11" Wire Tie	50

IMPORTANT

PLEASE READ THESE INSTRUCTIONS BEFORE COMMENCING ASSEMBLY. All equipment must be installed in accordance with these instructions. Check your shipment against Bill of Lading and Parts List. Any missing or broken parts must be reported to your distributor within 10 days of receipt of your order. When properly installed and maintained, equipment will give many years of Safe Trouble-Free use. Periodically check for loose or broken parts. Loose bolts must be tightened and broken parts must be replaced as they can possibly create dangerous situations leading to unnecessary accidents.





LaCROSSE GOAL (PORT.)

562-605

GENERAL ASSEMBLY INSTRUCTIONS:

1. Check each piece carefully and remove any sharp projections that may have been caused by shipping.
2. DO NOT Tighten bolts more than hand tight until entire assembly is completed.
3. All threaded ends of bolts protruding beyond nuts should be cut off and peened over to remove any sharp edge.

SPECIFIC ASSEMBLY INSTRUCTIONS:

1. Assemble goal on ground.
2. Connect frame halves using 3/8" x 1-1/4" Button head Bolts, 3/8" Flat Washers, and 3/8" Lock Nut. Assembly with nut at BOTTOM of portable frame. Tighten using the 7/32" Socket Key.
3. Attach uprights to portable frame halves using 3/8" socket set screws. Only hand-tighten until goal is completely assembled.
4. Attach crossbar to uprights using 3/8" socket set screws. Only handtighten until goal has been completely assembled.
5. After all posts have been connected and are plumb and level, making sure to maintain the 6' x 6' inner opening of the goal, tighten set screw and bolts using socket keys.
6. Position goal and stake down in four places.
7. Attach net to frame using wire ties.

MAINTENANCE INSTRUCTIONS:

Check periodically for loose bolts and/or broken parts and replace immediately.

SPECIFICATIONS:

Locrosse goal shall be fabricated from 1-7/8" 13gauge galvanized steel, painted orange with and electrostatically applied polyester powder coat finish. Goal dimensions shall be official size.: 6' h x 6' w x 7' d. Lacrosse net shall be a 3mm braided, knotless nylon white in color.