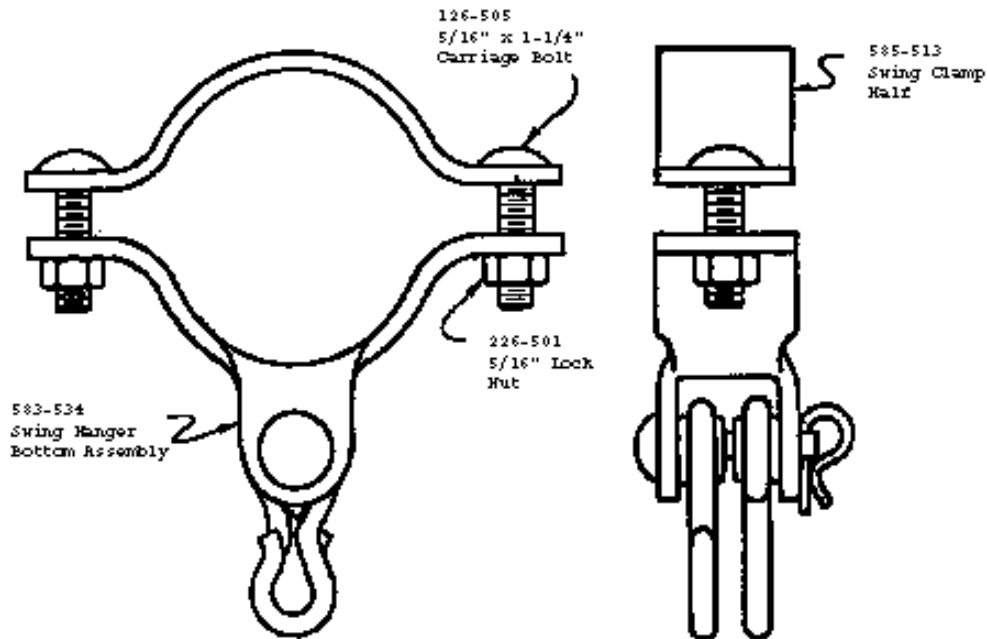


# 582-504 2 3/8" Swing Hanger

Please read these instructions before commencing assembly. All equipment must be installed in accordance with these instructions. Check your shipment against the Bill of Lading and parts list. Any missing or broken parts must be reported to your distributor within 10 days of receipt of your order. When properly installed and maintained, this event will give many years of safe, trouble-free use. Periodically check for loose or broken parts. Loose bolts must be tightened and broken parts must be replaced as they can create dangerous situations leading to unnecessary accidents.



1 CTN

**PACKING LIST**

1 Hardware Bag  
1 Instruction Sheet

**HARDWARE BAG**

1 583-534 2 3/8" Swing Hanger Bottom Assembly  
1 585-513 2 3/8" Swing Clamp Half  
2 126-505 5/16" x 1 1/4" Carriage Bolt  
2 226-501 5/16" Lock Nut

1 CTN	1 TOTAL PIECES	1.5#
-------	----------------	------