

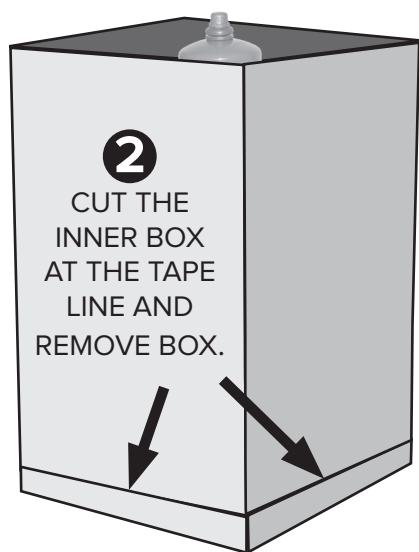
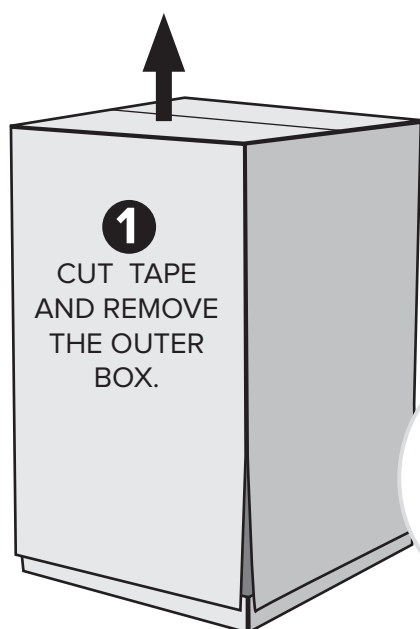
# — ATTENTION —

## PLEASE READ BEFORE OPENING

To safely move your **Bell Tree** to it's final destination and avoid damage to the instrument, please follow these instructions.

Remove all strapping and wrap to move the box off of the pallet. Move the entire cardboard box with a furniture dolly/hand truck, or tilt the box on its side and have two people carry to its destination.

**DO NOT REMOVE THE BELL TREE FROM THE BOX BY LIFTING, PUSHING OR PULLING ON THE BELLS!**



**NOTE:** The bubble wrap should be left on the Bell Tree while moving it.

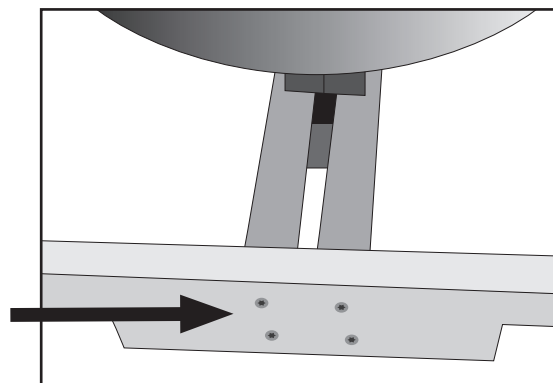
**3**

WITH 2 PEOPLE, PLACE YOUR HANDS ON HANDLES AND LIFT TO TRANSPORT TO THE INGROUND LOCATION ALREADY PREPARED.



**4**

UNSCREW THE TWO SCREWS ON EACH SIDE (USING A T-25 STAR DRIVE) NEXT TO THE BLUE TAPE ON EACH SIDE TO REMOVE FROM THE FRAME.



**5**

ONCE INSTALLED, CUT ZIPTIES OFF



**EnSoul**  
MUSIC DESIGNS



See more at [www.ensoulmusic.com](http://www.ensoulmusic.com)

**800.673.1517**

[info@EnSoulMusic.com](mailto:info@EnSoulMusic.com)