

# Inground Post/Mount Installation

## STEP: 1

**DO NOT CEMENT POSTS/MOUNTS  
INTO PLACE UNTIL THE ENTIRE  
STRUCTURE IS ASSEMBLED.**

Refer to the General Installation  
guide footing size information and  
digging proper holes for the support  
posts/mounts.



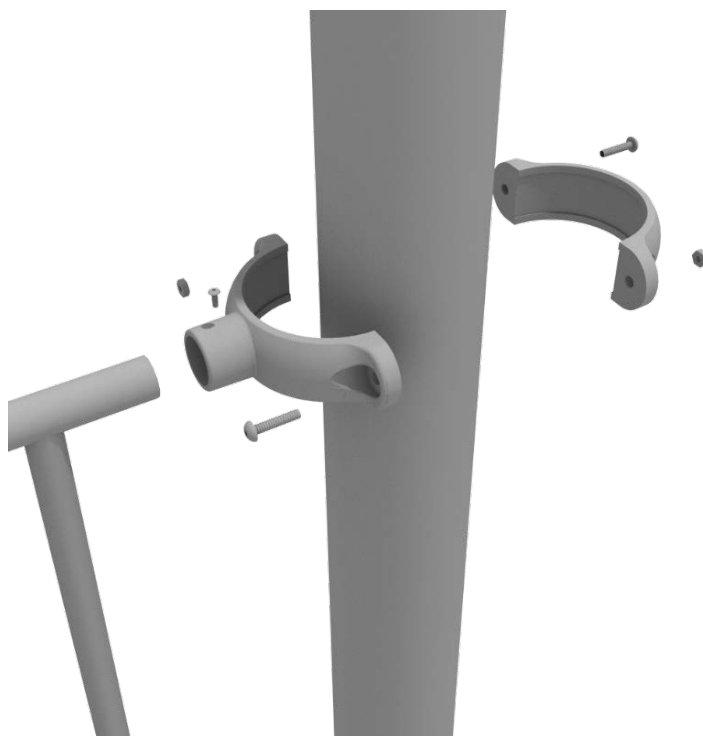
10859 E Washington St. Suite 200  
Indianapolis, IN 46229  
1-800-667-0097

Created By: Gage Brown  
Date: 04/26/2018

## 5.0-inch Clamp Installation Guide

### 5.0-inch Tube Clamp

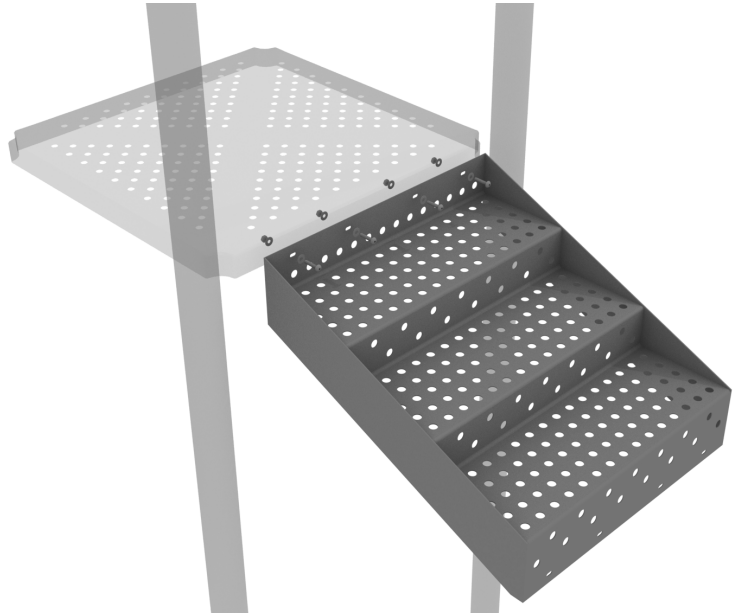
Insert Bar on Component into one half of the Tube Clamp and attach with M4\*25 Set Screw. Then, using the other half of the tube clamp and the hardware provided in the clamp hardware bag, attach the other half of the tube clamp around the post.



# 5.0-inch 3-foot Transfer Station Install

## STEP: 1

Using four (4) M10\*25 Bolts, eight (8) M10 Washers, and four (4) M10 Lock Nuts, attach the top of the stairs to the deck.



## STEP: 2

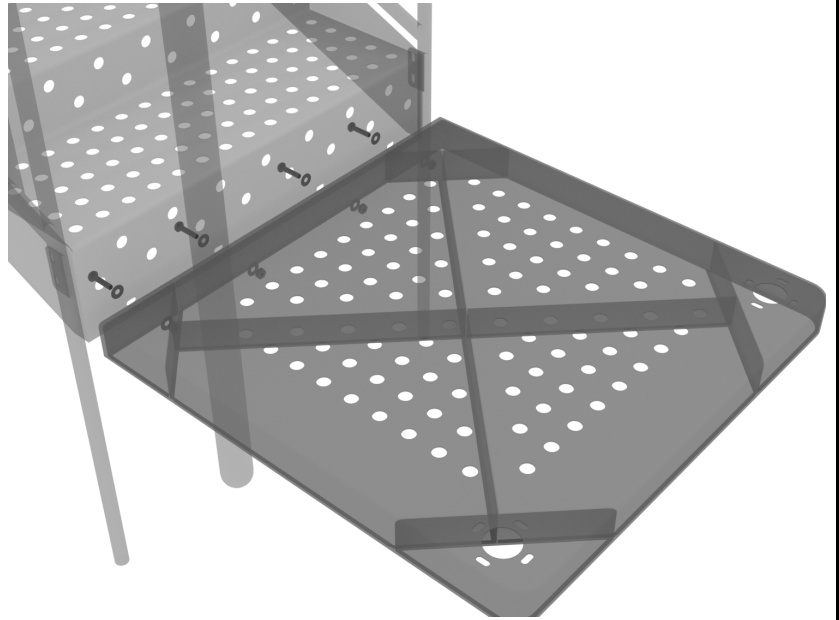
Attach the ADA Transfer Stair Handrails to the posts using Tube Clamps. Then using six (6) M10\*25 Bolts, twelve (12) M10 Washers, and six (6) M10 Lock Nuts, attach the handrail to the bottom and side of the stairs.



# 5.0-inch 3-foot Transfer Station Install

## STEP: 3

Using four (4) M10\*25 Bolts, eight (8) M10 Washers, and four (4) M10 Lock Nuts, attach the ADA transfer deck to the base of the 3-foot ADA transfer stair.



## STEP: 4

See general installation guide regarding footing information for the transfer deck handrail. Using four (4) M10\*25 Bolts, eight (8) M10 Washers, and four (4) M10 Lock Nuts, attach each transfer deck handrail to the ADA transfer deck.

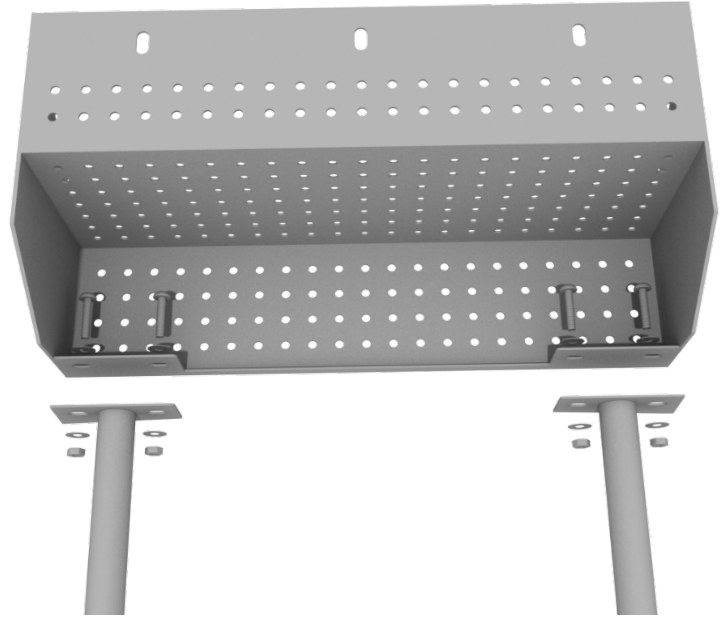




## 5.0-inch 4-foot Transfer Station Install

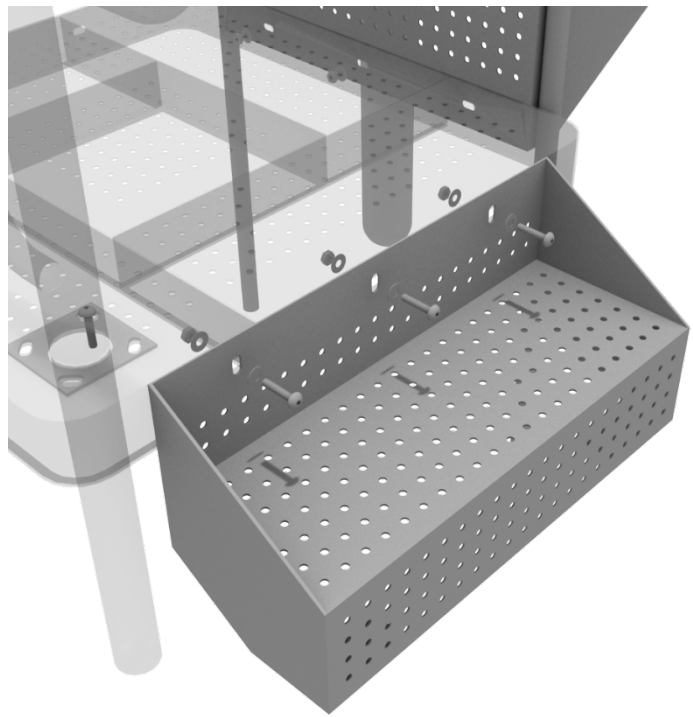
### STEP: 5

See general installation guide regarding footing information for the ADA transfer step mount. Using two (2) M10\*25 Bolts, four (4) M10 Washers, and two (2) M10 Lock Nuts, attach the transfer step to each ADA transfer step mounts.



### STEP: 6

Using three (3) M10\*25 Bolts, six (6) M10 Washers, and three (3) M10 Lock Nuts, attach the top of the ADA transfer step to the ADA transfer deck.



# Square Deck Installation

## STEP: 1

After the posts are in place, using four (4) M10\*35 Bolts, eight (8) M10 Washers, and four (4) M10 Lock Nuts, attach each square deck to each pre-attached deck clamp as shown in the image.

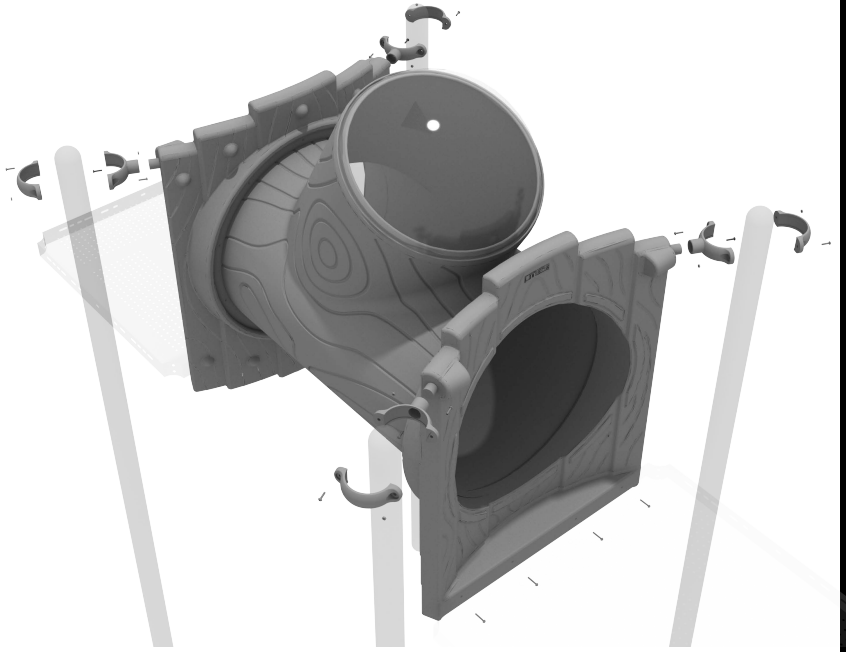
Deck clamps are pre-attached to the posts and should not be altered in any way.



# Treehouse Tube Bridge with Window Installation

## STEP: 1

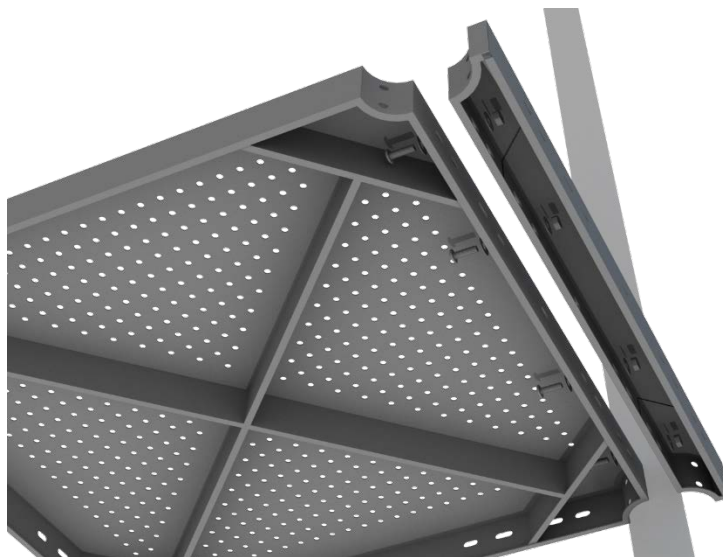
Attach each side of the tube bridge to the proper deck using four (4) M10\*50 bolts, eight (8) M10 washers, and four (4) M10 lock nuts. Then, attach the top of the tube bridge to the posts using one (1) tube clamp. View standard clamp attachment guide for more information.



# 3-foot Double Straight Slide Installation

## STEP: 1

Attach the deck climber extension to the proper deck using four (4) M10\*25 bolts, eight (8) M10 washers, and four (4) M10 lock nuts.



## STEP: 2

Then, See general installation guide regarding footing information for the double slide end mounts. Using two (2) M8\*20 bolts, two (2) M8 spring gaskets, and two (2) M8 washers, attach the slide end mounts to the double slide.



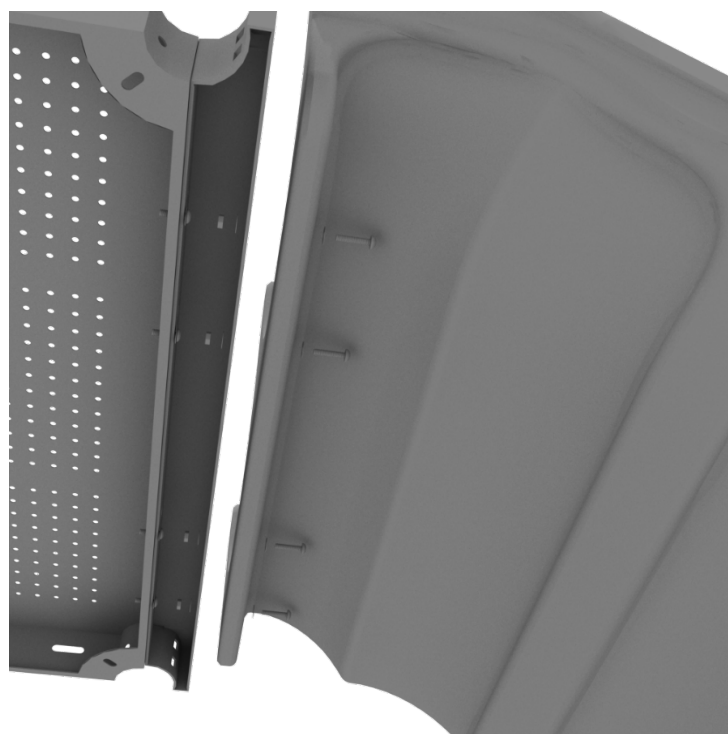
1 Playground Drive  
Greenfield, IN 46140  
1-800-667-0097

Created By: Aaron Price  
Date: 04/10/2018

# 3-foot Double Straight Slide Installation

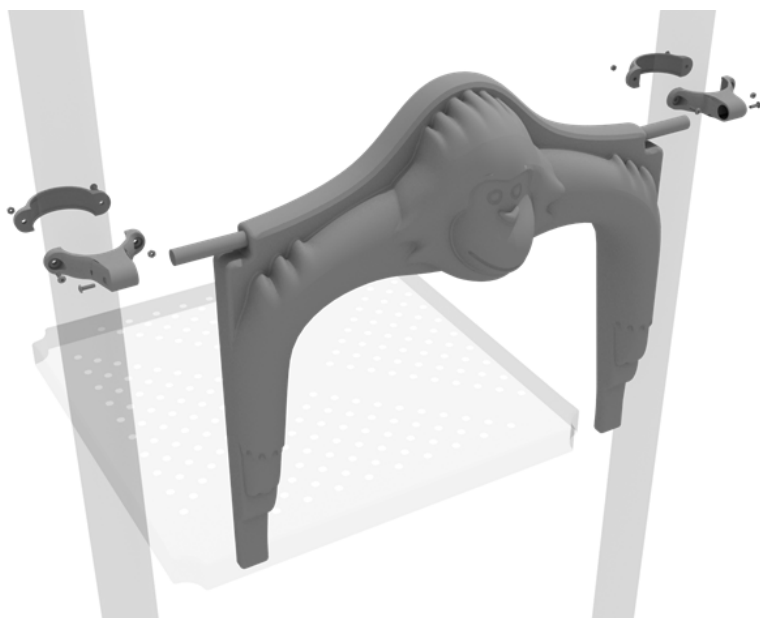
## STEP: 3

Then, attach the slide to the deck extension using four (4) M10\*45 bolts, eight (8) M10 washers, and four (4) M10 lock nuts.



## STEP: 4

Once the slide is attached, take the tree house double slide hood and insert hood into the top of the slide, and then attach the top using two (2) double slide clamps, and two (2) M8\*30 bolts.

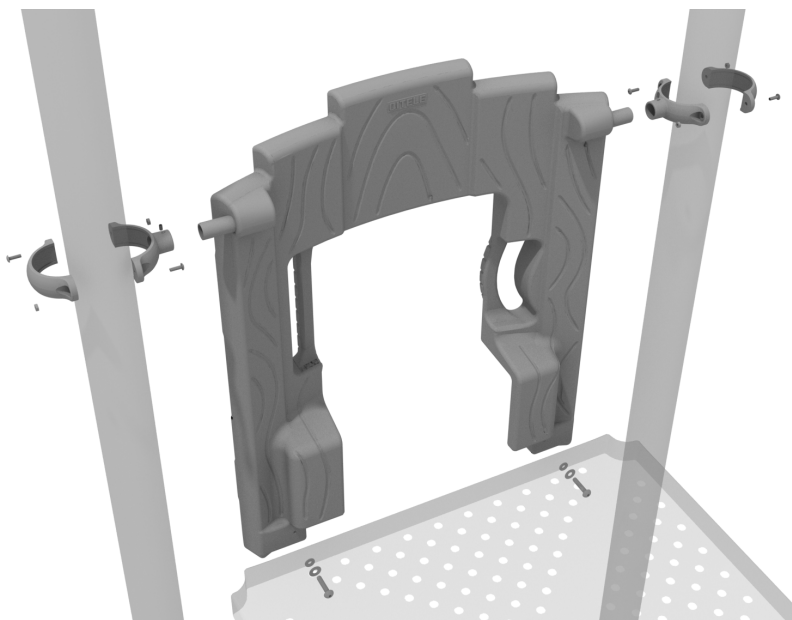




# 3-foot Straight Slide Installation

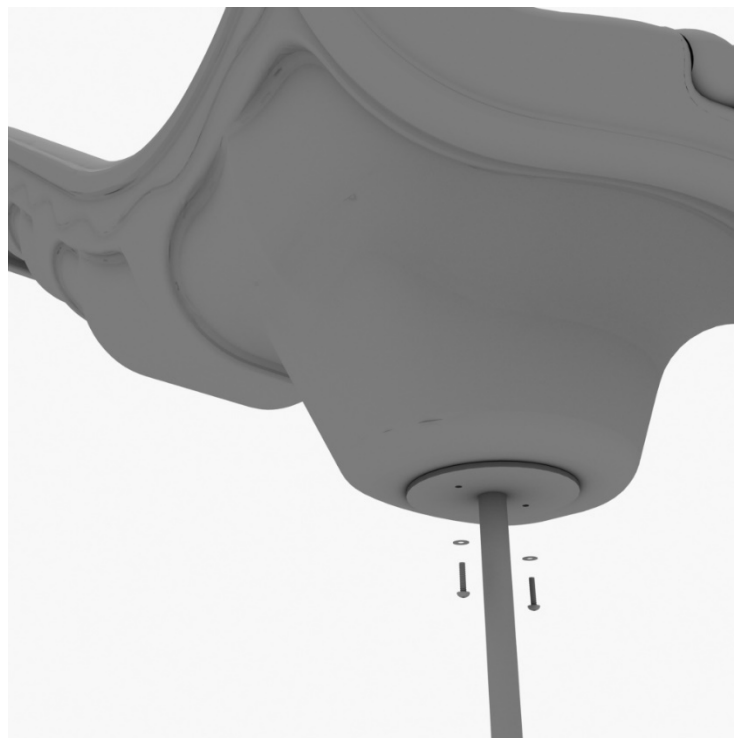
## STEP: 1

To attach the tree house slide hood to a deck, take two tube clamps and attach them to the posts using two (2) M4\*25 self-tapping screws. Then, attach the hood to the deck using two (2) M10\*20 bolts, two (2) spring washer, four (4) M10 washers, and two (2) M10 lock nuts. Repeat this process for every single slide hood.



## STEP: 2

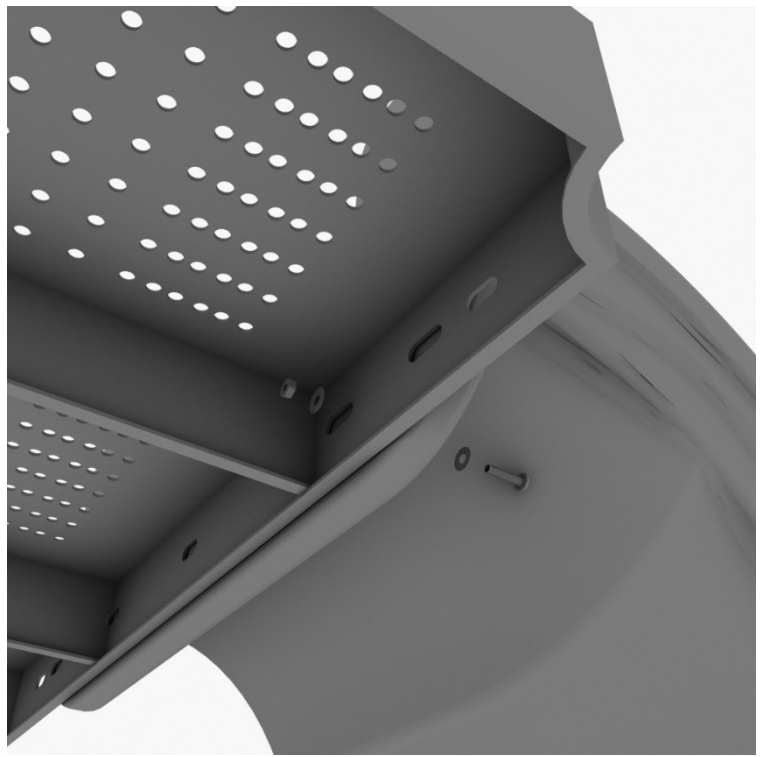
See general installation guide regarding footing information for the slide end mount. Using two (2) M8\*20, two (M8) spring washers. And two (2) M8 washers, attach the slide to the slide support post.



# 3-foot Straight Slide Installation

## STEP: 3

Using one (1) M10\*45 bolt, two (2) M10 washers, and two (2) M10 lock nuts, attach one side of the slide to the deck.



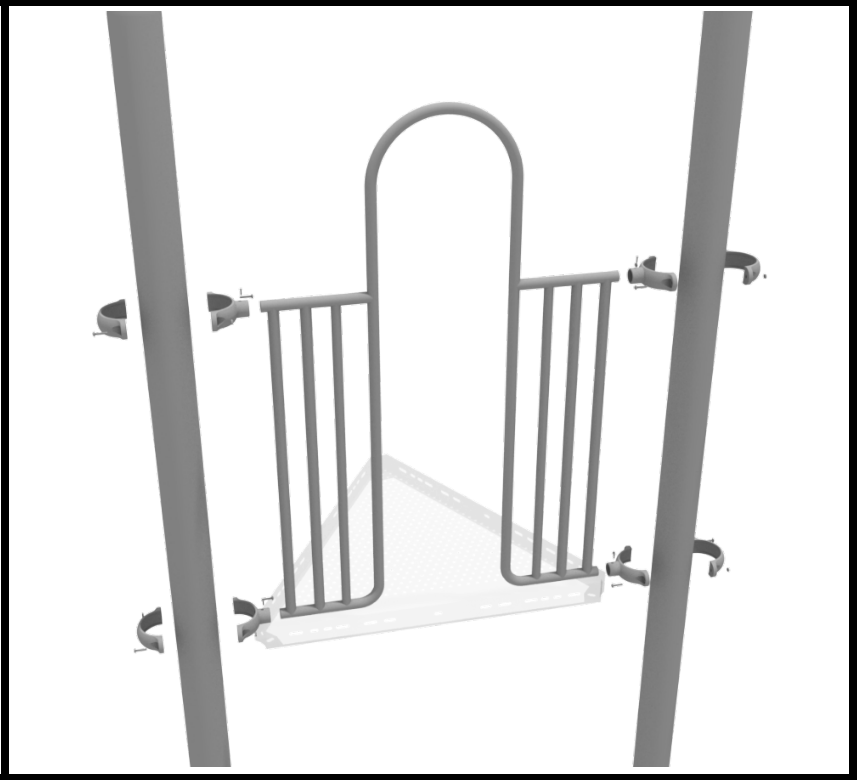
## 5.0-inch 4-Clamp Arch Rail Installation

### STEP: 1

Attach the Arch Rail to the designated posts by connect half of the tube clamp to the arch rail.

Repeat this process for each attachment point. Set the arch rail into place, then attach the second half of the clamp around the post.

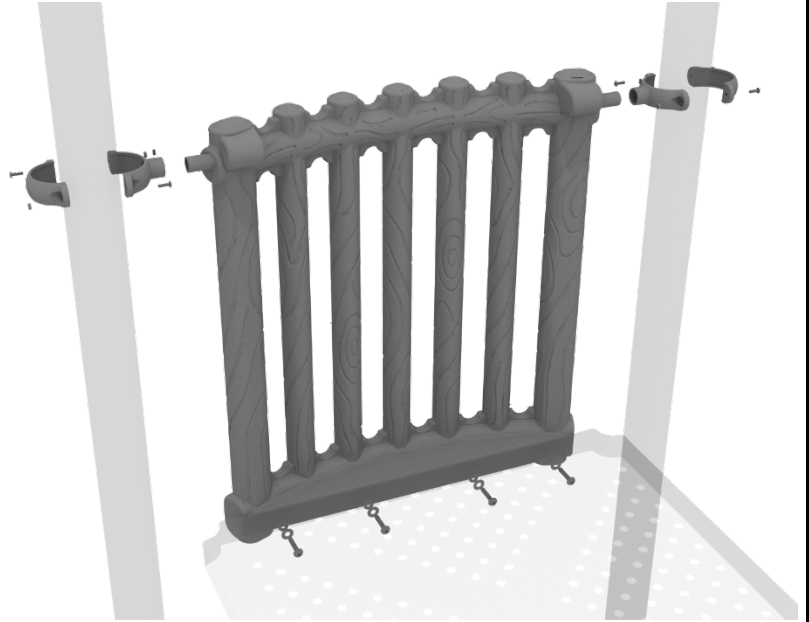
The gap between the deck and the bottom of the rail should be no more than 3 inches.



# 5.0-inch Bamboo Panel Installation

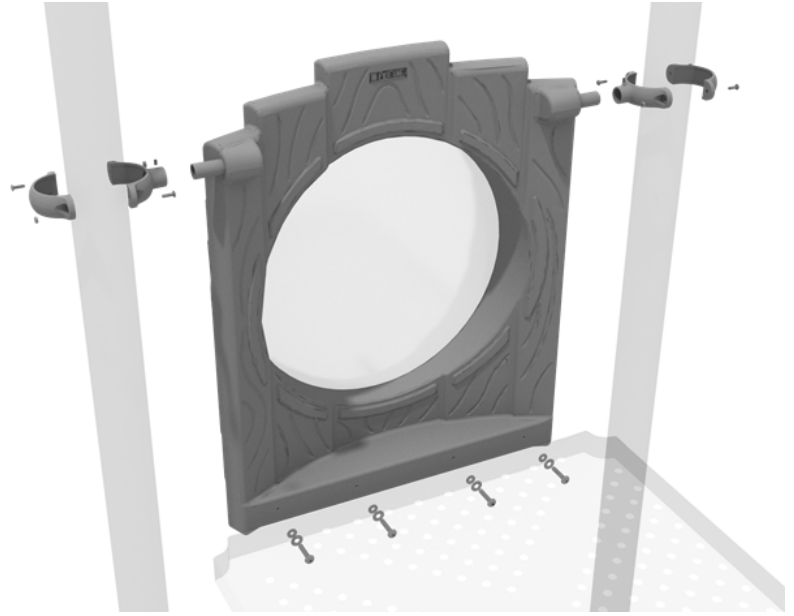
## STEP: 1

Attach the Bamboo Panel to the designated posts using two (2) tube clamps and two (2) M4\*25 Set Screws. Then, attach the bottom of the panel to the deck using four (4) M10\*20 Bolts, four (4) M10 Washers, and four (4) M10 Lock Nuts.



# 5.0-inch Treehouse Bubble Panel Installation

Attach the Tree house Bubble Panel to the designated posts using two (2) tube clamps and two (2) M4\*25 Set Screws. Then, attach the bottom of the panel to the deck using four (4) M10\*20 Bolts, four (4) M10 Washers, and four (4) M10 Lock Nuts.

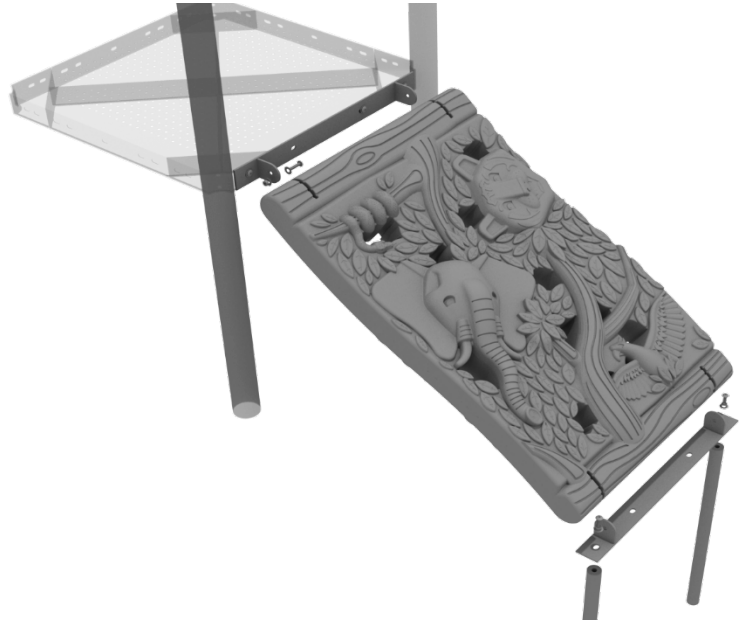




# Jungle Climber Installation

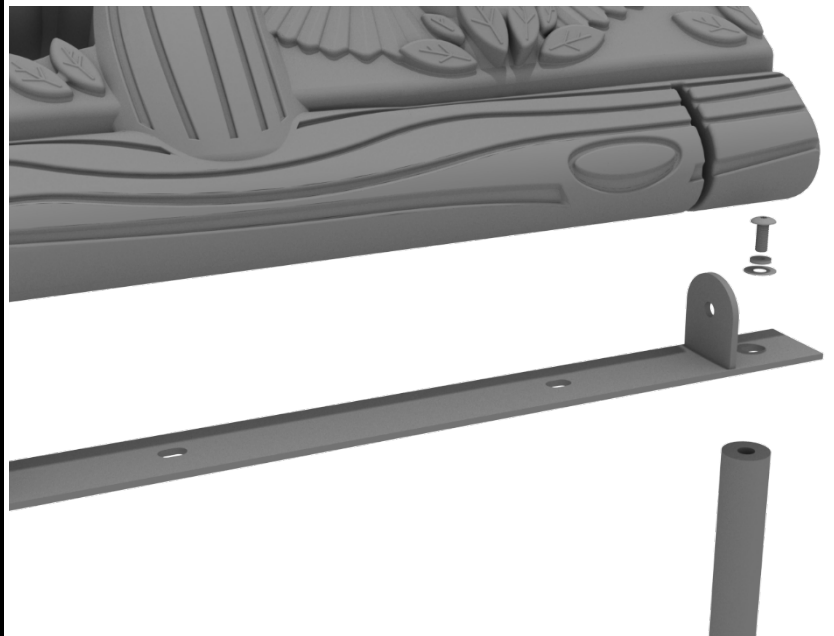
## STEP: 1

First, detach the pre-attached bracket on the end of the climber that has four (4) Bolts attached, and attach it to the designated deck.



## STEP: 2

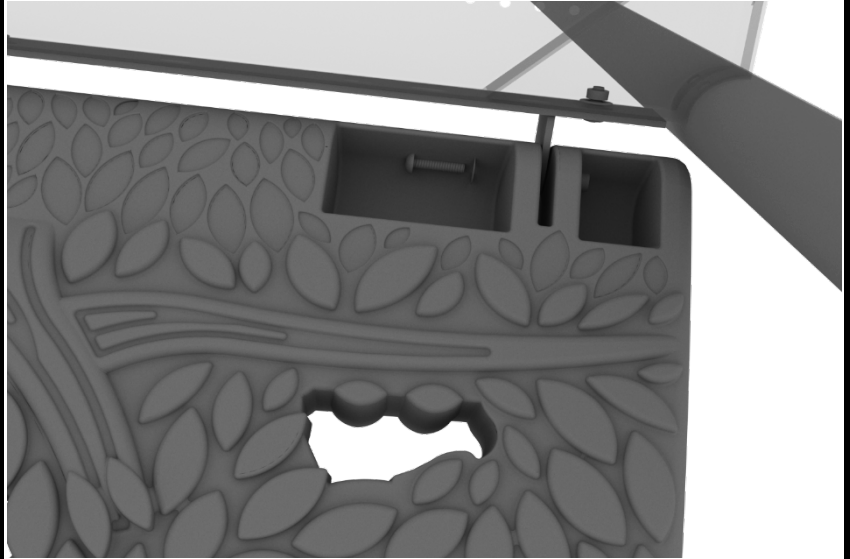
Then, attach the provided support mounts to the other side of the Jungle Climber using the pre-attached bolt. See general installation guide regarding footing information for the figure climber.



# Jungle Climber Installation

## STEP: 3

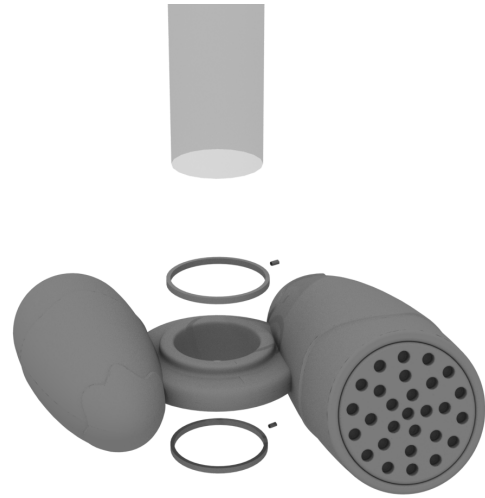
Finally, re-attach the climber back to the mounting plate using the original pre-attached hardware.



# Double Drum Install

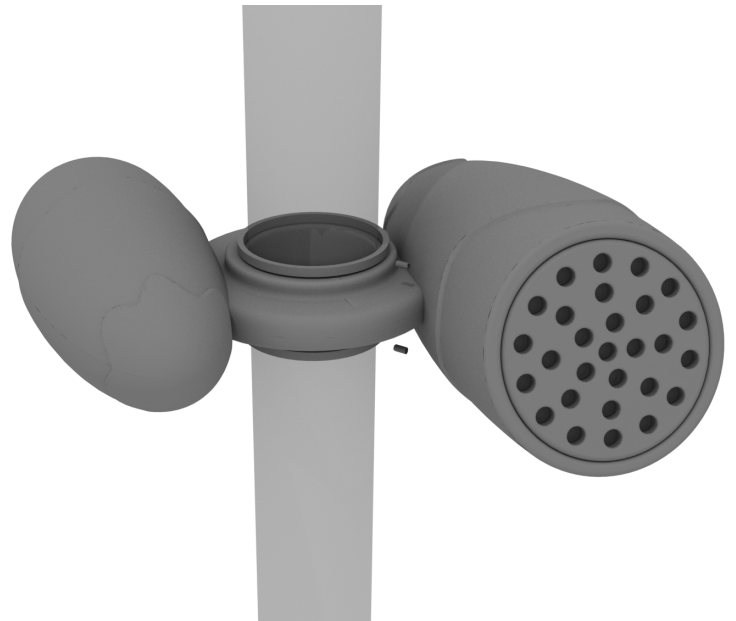
## STEP: 1

Using drum rings located in hardware box, slip onto designated post as shown.



## STEP: 2

Using two (2) M5\*75 self tapping screws, drill screw into ring and post.

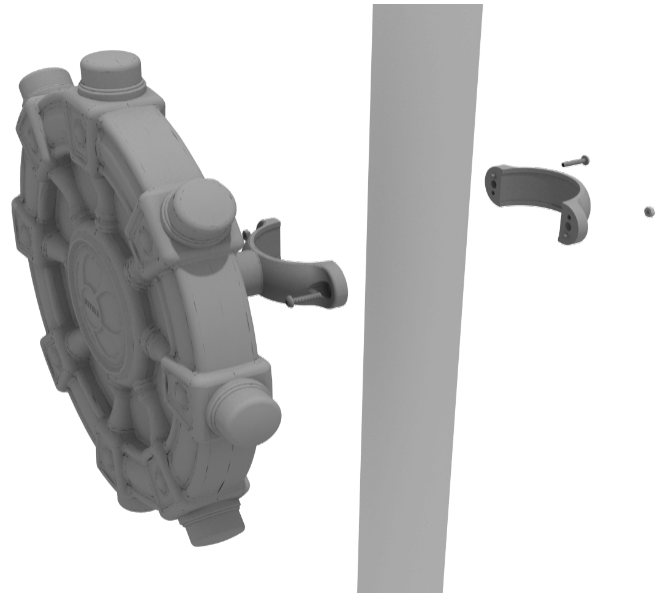


# Ships Wheel Installation

Detach half of the tube clamp connected to the Ships Wheel, and re-attach the clamp around the support post, as shown in the picture. Recommended install height is 20 to 36 inches above surfacing depending on age range.

*We recommend using Thread-locking fluid on bolts connecting Ship's wheel to clamp to prevent hardware from loosening over time.*

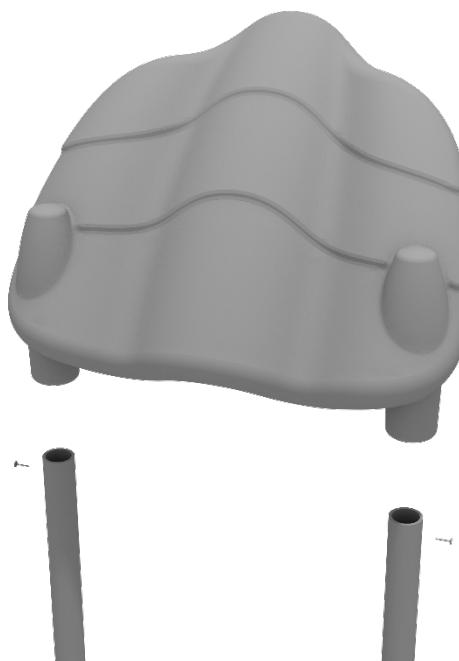
(Thread-locker not supplied)



# Banana Roof Install

## STEP: 1

Place roof onto designated post, drill and bolt from top of post using two (2) M8\*30 bolts, two (2) M8 spring washer and two (2) M8 washers per roof.





# Treehouse Club House Roof Installation

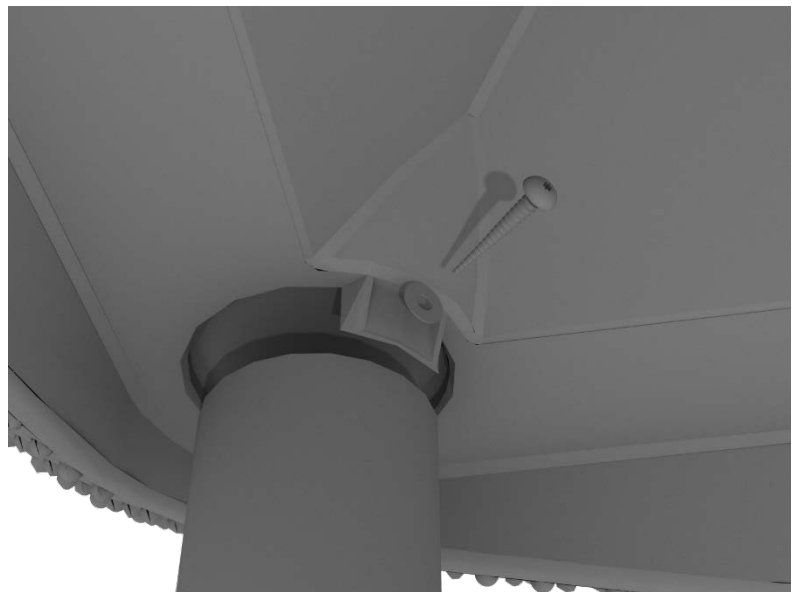
## STEP: 1

Place the Club House roof on to the top of the posts of the appropriate deck.



## STEP: 1

Install the Club House roof by using four (4) M4\*50 Self Tapping screws, and four (4) M8 Washers.



# Palm Tree Topper Installation

## STEP: 1

Place the Palm Tree Topper onto the provided post. Use three (3) M8\*50 set screws and three (3) M\*8 Washers to attach the Flower Face Topper to the post.

