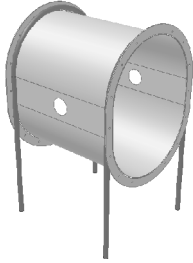


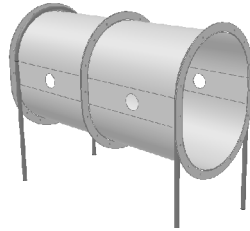
Childforms® FUNTUBE Assembly Instructions

I-DIRBURYINSTrevA

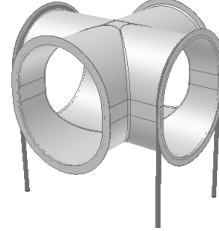
TUB-00001



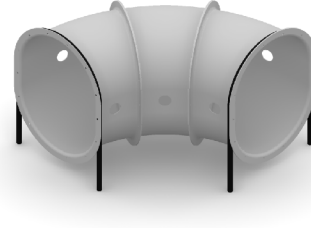
TUB-00002



TUB-00011



TUB-00016



- Please read and follow all **Safety Information**.
- Please review assembly and component **Diagrams**.
- Verify **component & hardware** quantities received.
- Familiarize yourself with the **installation procedures**.

Safety

- Please follow assembly procedure in the correct order.
- Play site ground material should only be of an approved, shock-absorbing type and meet minimum depth requirements. **NEVER** install playground equipment over paved or hard surfaces.
- Please be sure that all fasteners are used in the proper location.
- Be sure that minimum fall zone requirements are met.
- Do not allow children to play on or near equipment which is in need or repair or replacement, is incomplete or is otherwise considered unsafe.

1) Parts Inventory and Set-Up

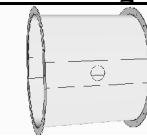
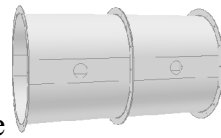
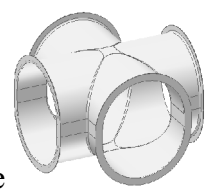
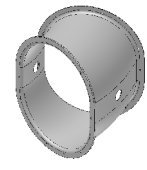
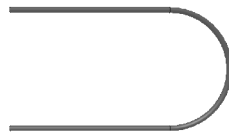
Confirm that all components and hardware is included (see **Parts List**).
Gather any additional tools necessary for installation (hex bit driver, level, etc).
Please follow diagrams and instructions in order.

2) Assembly- General

Please use correct type and length fasteners as shown in the installation procedure.
Start all of the fasteners on each direct bury frame before tightening. Once all the fasteners have been started tighten all of them down. Be sure to follow the assembly order to ease the construction procedure.



PARTS LIST

Item Qty. Description Drawing Part Number

PA	(1)	Straight Funtube		600-10004
		OR		
PA	(2)	Double Straight Funtube (Assembled at the factory)		600-10004
		OR		
PA	(1)	Direct Four-Way Funtube		600-10003
		OR		
PA	(3)	Left/Rt Funtube (30 Degree) (Assembled at the factory)		600-10002
PB	(2)	Direct Bury Frame		600-00005



Hardware: 0-TUBE/DBHWKIT

Item Qty. Description Drawing Part Number

HA	(16)	5/16" X 1-1/2" SS Torx Head Bolt		100-516112
HB	(16)	5/16-18 T-Nut SS		100-516TNSS

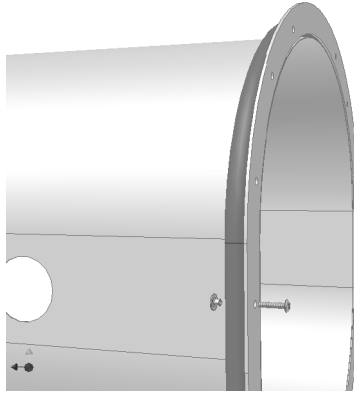
Tools

Item Qty. Description Drawing Part Number

TA	(1)	T Nut Wrench Welded Zinc Pltd		100-TNUTW
TB	(1)	Torx Bit T40 (hex drive)		100-00T40

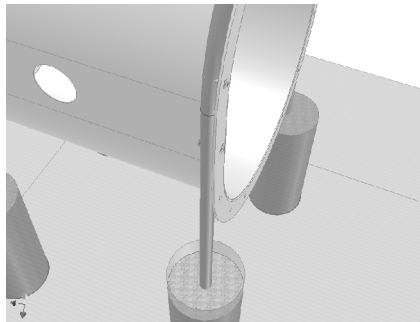
Installation procedure:

- 1) Connect (1) Direct Bury Frame (**PB**) to each (opposite) end of the Funtube (**PA**). Use (8) 1-1/2” long Torx Bolts (**HA**) and (8) 5/16-18 T-Nut SS (**HB**) to secure each frame to the end of the tube. The direct bury frame mounts behind the flange of the tube as you are facing it. Gently bend Tee Nut flanges to match round tubing by tapping edges with a hammer. (See diagram)



Fastener Detail (Typical)

- 2) When you are ready to sit the FunTube assembly into the ground, determine the location and measure and dig (4) holes approx. 8” diameter by 18” deep. Mix and pour concrete into holes, leaving 2” of earth above top of concrete. Lower FunTube assembly into the concrete- securely prop with wood or similar temporary structural material at ground level. Let structure remain undisturbed for (3) days minimum until concrete has fully set.



Footer Detail

Rev	Date	Init.	Remarks
A	2-2-13	DAH	Originated Manual