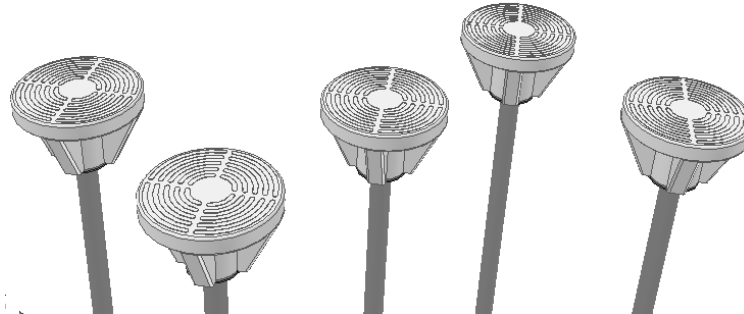


**FUN PODS™ Assembly Instructions:**

- Please read and follow all **Safety Information**.
- Please review assembly and component **Diagrams**.
- Verify **component & hardware** quantities received.
- Familiarize yourself with the **installation procedures**.

**Safety**

- Play site ground material should only be of an approved, shock-absorbing type and meet minimum depth requirements. **NEVER** install playground equipment over paved or hard surfaces.
- Be sure that minimum fall zone requirements are met.
- Do not allow children to play on or near equipment which is in need of repair or replacement, is incomplete or is otherwise considered unsafe.

**Parts Inventory and Set-Up**

Confirm that all components, hardware and special tools are included (see **Parts List**). Gather any additional tools necessary for installation (hex driver, level, tape measure, etc). Please follow diagrams and instructions in order.

**1) Site location and Preparation**

Be sure site is of adequate size- allow for minimum fall zones (see **Layout Diagram**). Be sure site is graded, level and free of debris for proper set-up and assembly.. Measure and mark site to determine structure location and orientation.

**2) Assembly- General**


Please use correct type and length fasteners as shown in the installation procedure. Be sure to follow the assembly order to ease the construction procedure.

3) **Installation Procedure**

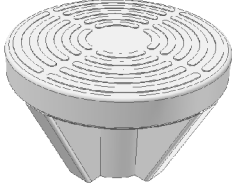
After measurement and layout of site, carefully measure for Fun Pod™ location. Confirm footer locations- dig, pour and set footers, locating one Fun Pod™ post at a time. Be sure posts remain level and square to previous before continuing. After all the posts have been set, do not move or mount hardware for (3) days.

**PARTS LIST**

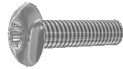
**Steel Components:**

<b><u>Item Qty.</u></b>	<b><u>Description</u></b>	<b><u>Drawing</u></b>	<b><u>Part Number</u></b>
			
SA (5)	Mounting post		250-00005-B/G

**Plastic Components:**

<b><u>Item Qty.</u></b>	<b><u>Description</u></b>	<b><u>Drawing</u></b>	<b><u>Part Number</u></b>
			
PA (5)	Molded Fun Pod		250-00001-Y/T

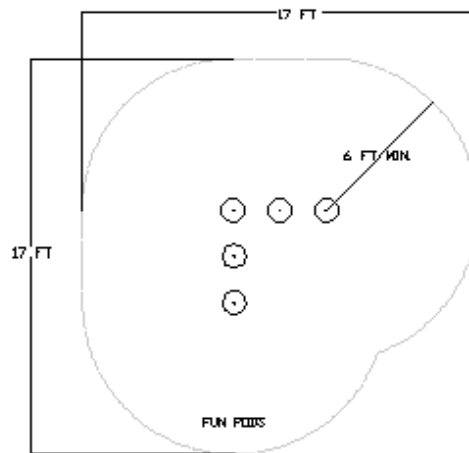
**Hardware Components:**

<b><u>Item Qty.</u></b>	<b><u>Description</u></b>	<b><u>Drawing</u></b>	<b><u>Part Number</u></b>
			
HA (20)	5/16" X 3/4"lg SS Torx Bolt		100-51634

**Tools:**

<b><u>Item Qty.</u></b>	<b><u>Description</u></b>	<b><u>Drawing</u></b>	<b><u>Part Number</u></b>
			
TA (1)	T-40 Torx Driver Bit		100-00T40

## Layout Diagram (Typical)

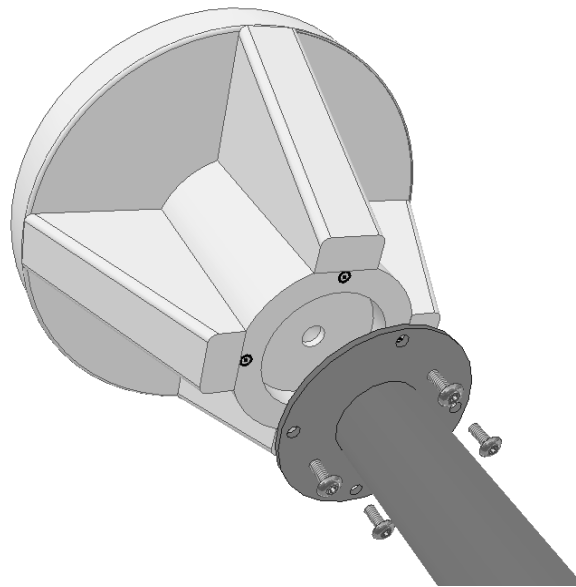


**NOTE:** Overhead views are for planning purposes only.  
Please follow guidelines as specified by the CPSC and ASTM F1487.

**Note:** Arrangement may vary- please be sure completed layout is at least 6 FT (72 inches) Away from existing structures and/or playground equipment.

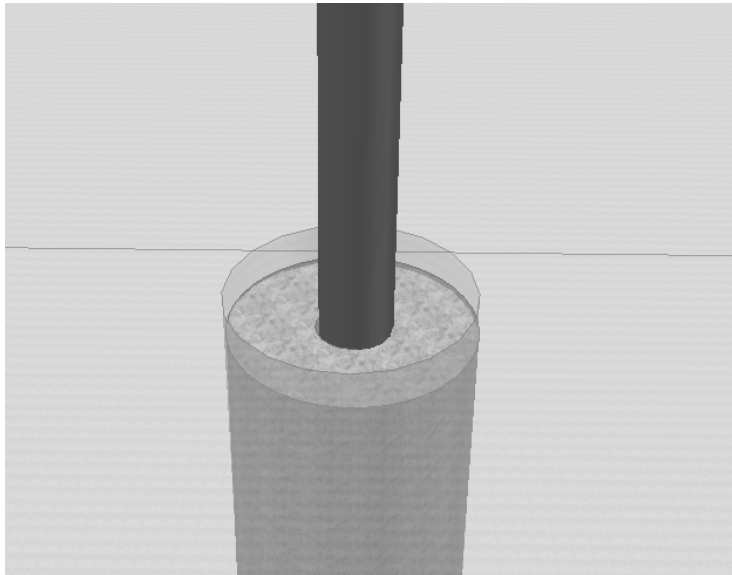
### **Installation procedure:**

- 1) Locate Fun Pod Posts (SA) and mount to Molded Fun Pods (PA) using (4) Torx Bolts (HA) per post, securely tighten fasteners with Torx driver bit provided.



Step 1- Post mounting detail.

- 2) When you are ready to mount the Fun Pods into the ground, determine the location, measure and dig (5) holes approx. 8" diameter by 24"(min.) to 40" (max.) deep. Mix and pour concrete into holes, leaving concrete 2" below ground level. Lower the Fun Pods/posts into the concrete- securely prop Fun Pod with wood or similar temporary Bracing structural material at desired height above ground level. Let Fun Pods remain undisturbed for (3) days minimum until concrete has fully set. Finally, cover exposed concrete with dirt and tamp to ground level. Cover entire play area with an approved ground surfacing material.



**Footer Detail**

Rev	Date	Init.	Remarks
A	4-27-12	DAH	Reviewed and moved to MiSys