

MODEL NO.67567 5" O.D. ARCH TIRE SWING MODEL NO. 67652 ADD-A-BAY ARCH TIRE SWING

PARTS LIST

DESCRIPTION	No. Req'd		PART NUMBER
	67567	67652	
Tire Swing Toprail	1	1	140364
Arch End Upright Assembly	2	0	140434
Add-A-Bay Arch Upright	0	1	140492
Plastic Tire	1	1	300196
Tire Ring Frame	1	1	304005
Hardware Complete	1	1	303660
Coated chain w/ "S" Hook	3	3	303659*
Swivel Assembly	1	1	159194*
1/2" x 1 1/4" B.H.C.S.	2	2	811062*
1/2" x 5 1/2" B.H.C.S.	2	2	811071*
1/2" Lock Washer	6	6	817342*
1/2" Hex Nut	4	4	804055*
"U" Bolt	3	3	803441*
Bracket	3	3	303833*
3/8" Lock Nut	6	6	804353*

**Unless Otherwise Specified, All Units of Measure are Each
*Included in Hardware**

Warning: Small parts and hardware items may present a potential choking hazard. Promptly remove all unused parts from play area. Any bolt end protruding more than two full threads beyond the face of the nut causes risk of clothing entanglement. Promptly cut-off flush, file smooth, and treat to prevent corrosion.

Note: Peen Tee-Nuts and Flatwashers to match radius of pipe after assembly is complete.

Note: Loctite (supplied by others) should be used on any non-patch hardware.

INSTALLATION INSTRUCTIONS:

1. Refer to your site plan. Select the area where the Tire Swing will be installed. Note that although the actual area of the Swing Beams is 4'-6" x 14'-11", a minimum of 11' is required in front of and behind the Swing and 6' is required from each side, for a total of 21'-8" x 26'-11-1/2" required. This area should be clear of all obstacles and contain an appropriate resilient surface material. Please refer to your *Safety Guidelines* for more information.
2. Dig footings spaced as shown on the diagram. Footing diameters should be 18". Calculate depth depending on the amount of resilient surfacing which will be installed. A minimum of 10" resilient surfacing is recommended.
3. Set the two Arch Posts into their footing holes and block in position with the socket facing each other.
4. Attach Toprail to the two Arch End Uprights as shown in detail 'A'. Adjust Arch Posts heights so that the center of Toprail is 80" above the finished ground level. **NOTE: to verify the actual Tire Swing height, a Pre-assembled Seat with its accompanying hardware and parts should be positioned to determine ultimate height of Toprail. The Bottom of the Tire should hang minimum 12" above finished ground.** Adjust Toprail and Arch End Upright up or down to achieve proper Tire Swing height.
5. Square and level entire Swing assembly. When satisfactory, fully tighten all fasteners and follow Support Post instructions for concrete. DO NOT ATTACH TIRE ASSEMBLY UNTIL RESILIENT SURFACING HAS BEEN INSTALLED
6. When the structure is finished and satisfactory, eliminate sharp points and sharp edges (burring) on installed Hardware like Bolts, Nuts, etc.

MODEL NO.67567 5" O.D. ARCH TIRE SWING
MODEL NO. 67652 ADD-A-BAY ARCH TIRE SWING

7. Install resilient surfacing material within the *use zone* of play structure in accordance with ASTM specifications F1292 appropriate for the fall height of each structure. Refer to the *Safety Guidelines*.
8. ONCE RESILIENT SURFACE MATERIAL HAS BEEN INSTALLED, attach Swivel Clamps to the Top Beam and fasten using hardware as shown in Detail 'B' then, attach Tire Swing with Chain to Swivel Clamp. FULLY CRIMP SHUT ALL 'S' HOOKS.

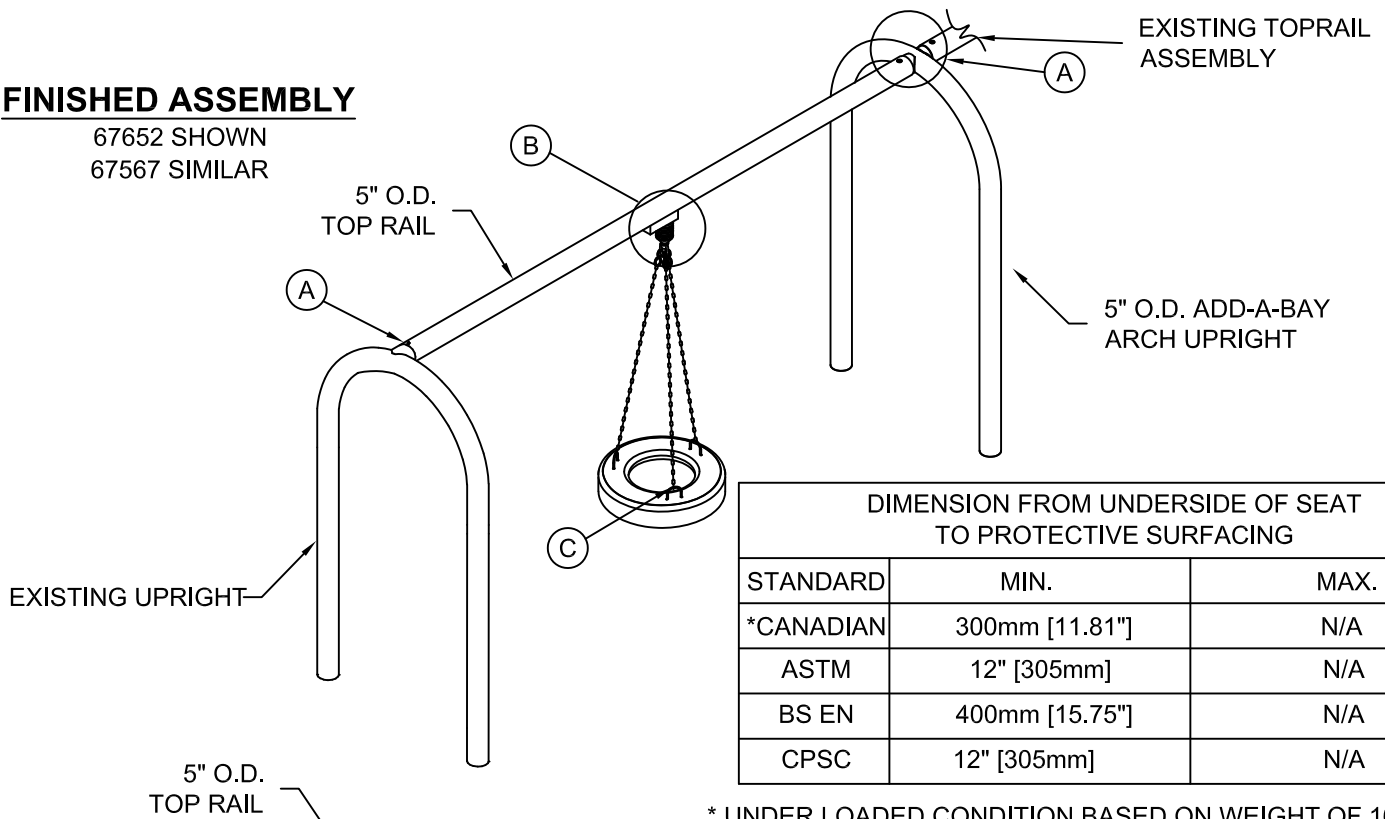
MAINTENANCE PROCEDURE:

Periodically check hardware for tightness, and tighten as necessary. Always check all parts for breakage or wear, and immediately put equipment out of service until any faulty parts found are repaired or replaced. Check for rust, paint loss and touch-up if necessary with paint. Check for welded areas and verify integrity. Check 'S' Hooks at both ends and all connection points for wear. Check all moving parts such as bushings, hangers and chain for wear. Check opening on 'S' Hooks for entanglement as specified by ASTM F 1487 Section 6.3. Verify proper height. Check Chains for integrity and corrosion. Check connections for excessive wear and replace immediately if necessary. Check periodically resilient surfacing for appropriate depth and remove extraneous materials that could cause injury, infection, or disease. Maintain detailed installation, inspection, maintenance, and repair records for each public-use playground equipment.

MODEL NO. 67567 5" O.D. ARCH TIRE SWING
MODEL NO. 67652 ADD-A-BAY ARCH TIRE SWING

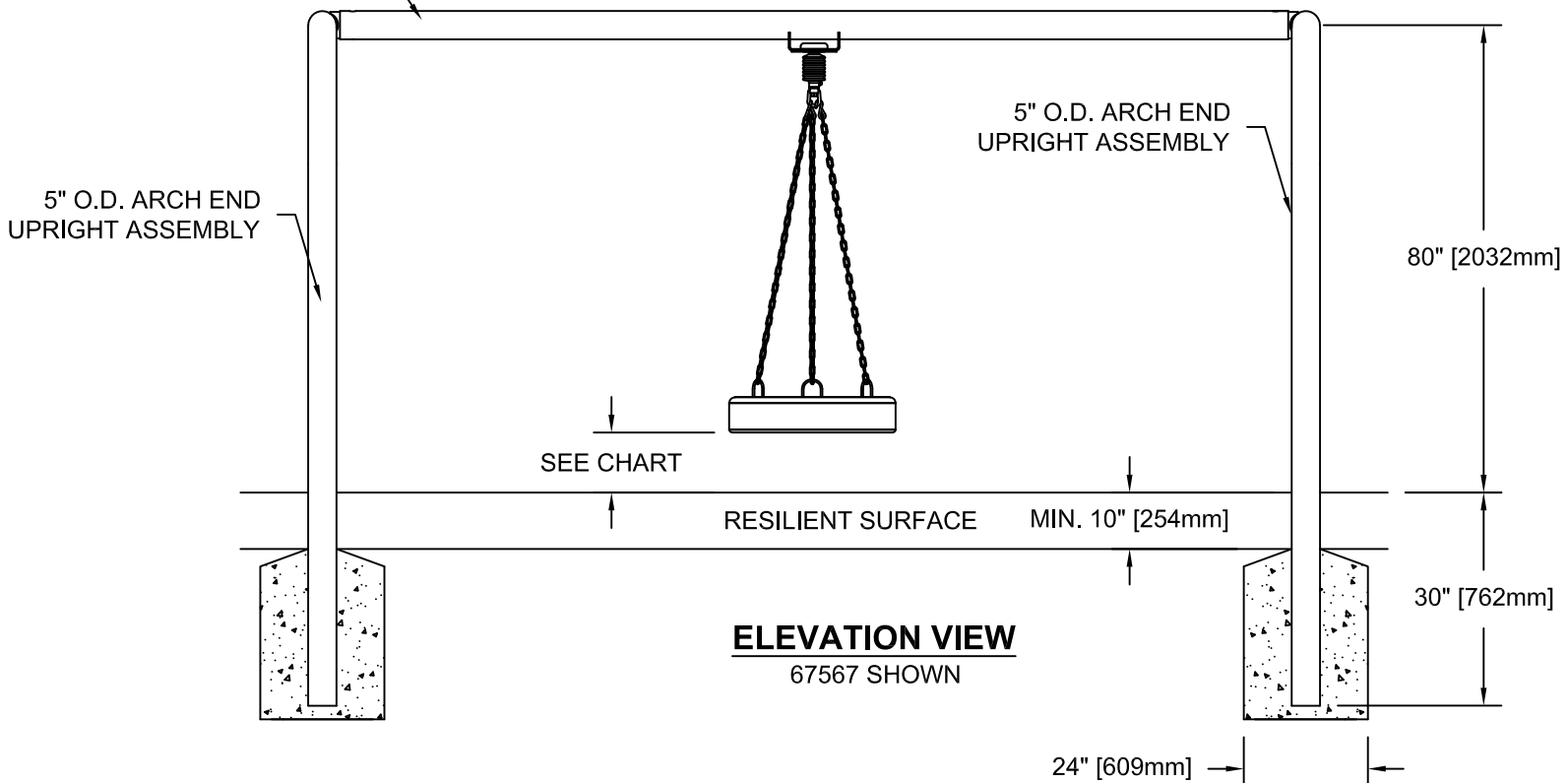
FINISHED ASSEMBLY

67652 SHOWN
 67567 SIMILAR



DIMENSION FROM UNDERSIDE OF SEAT TO PROTECTIVE SURFACING		
STANDARD	MIN.	MAX.
*CANADIAN	300mm [11.81"]	N/A
ASTM	12" [305mm]	N/A
BS EN	400mm [15.75"]	N/A
CPSC	12" [305mm]	N/A

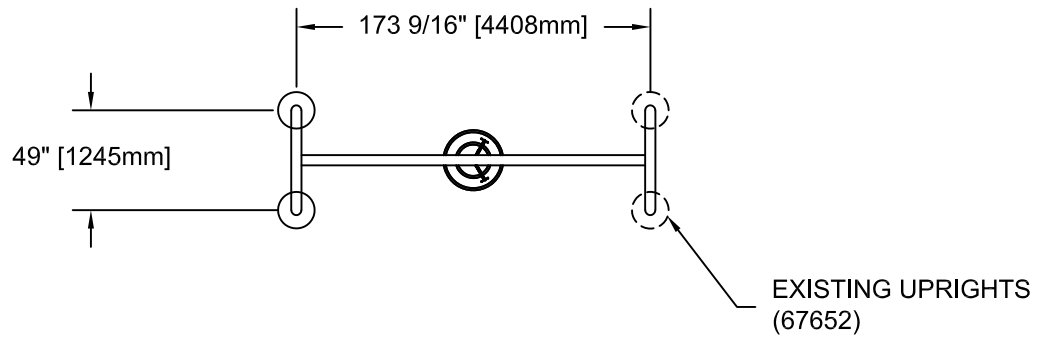
* UNDER LOADED CONDITION BASED ON WEIGHT OF 165lb. [75kg.]



ELEVATION VIEW

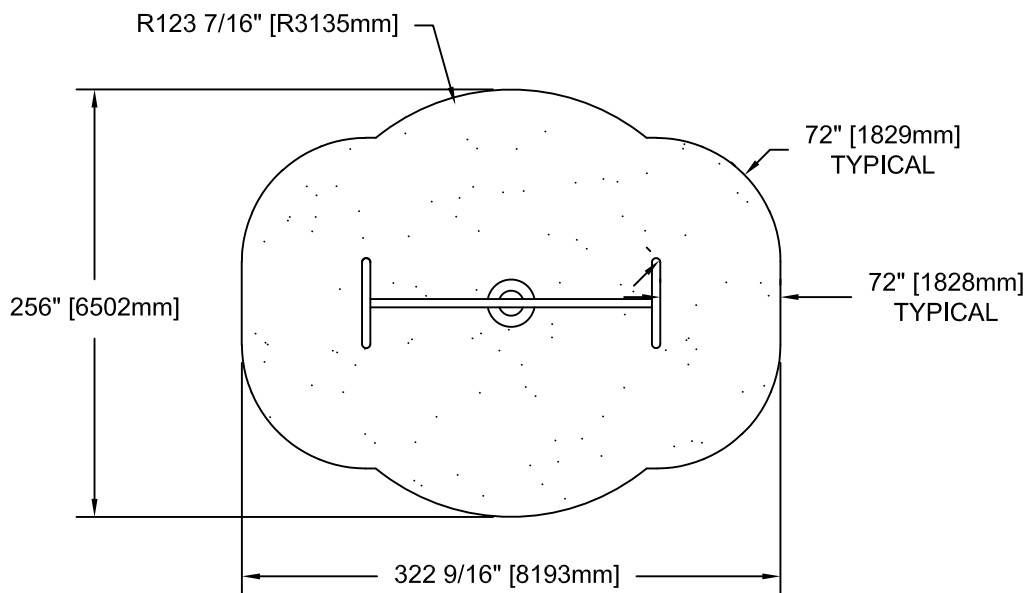
67567 SHOWN

MODEL NO. 67567 5" O.D. ARCH TIRE SWING
MODEL NO. 67652 ADD-A-BAY ARCH TIRE SWING



PLAN VIEW & FOOTING DIAGRAM

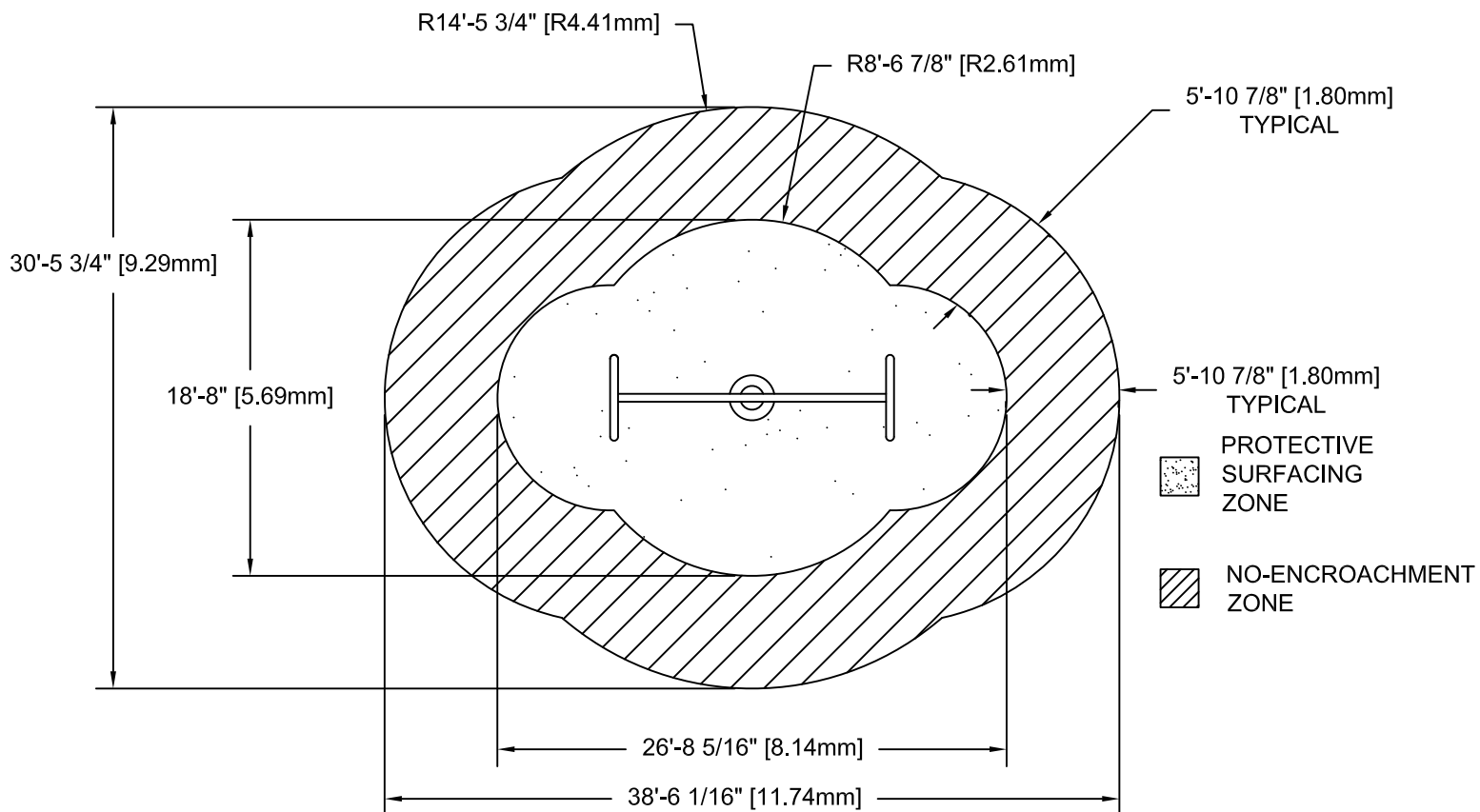
MODEL NO. 67567 5" O.D. ARCH TIRE SWING MODEL NO. 67652 ADD-A-BAY ARCH TIRE SWING



67567 ASTM USE ZONE

NOTE:

- 1.) OWNER/OPERATOR SHALL INSTALL AND MAINTAIN PROTECTIVE SURFACING WITHIN THE USE ZONE (U.S.) OR PROTECTIVE SURFACING ZONE (CANADA) OF ALL PLAY EQUIPMENT TO COMPLY WITH ASTM F-1292 AND ASTM F-1487 (U.S.) or CAN/CSA-Z-614 (CANADA).
- 2.) SOLID OUTSIDE BORDER REPRESENTS MINIMUM REQUIRED ASTM USE ZONE AND CSA PROTECTIVE SURFACING ZONE FOR SWING FRAME SHOWN.
- 3.) DASHED LINES REPRESENT CSA NO-ENCROACHMENT ZONE (CANADA ONLY).
- 4.) *EACH ADDITIONAL CONNECTED SWING FRAME BAY INCREASES THE USE ZONE SURFACING DIMENSIONS BY 14'-5 9/16" [4.41M]. (NOT AVAILABLE IN CANADA).



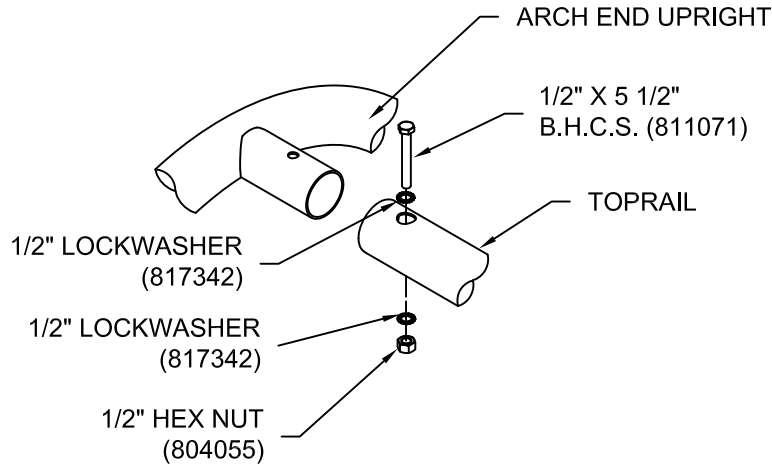
67567 CSA (CANADA) PROTECTIVE SURFACING/NO-ENCROACHMENT ZONE

ParkPlay Free Standing

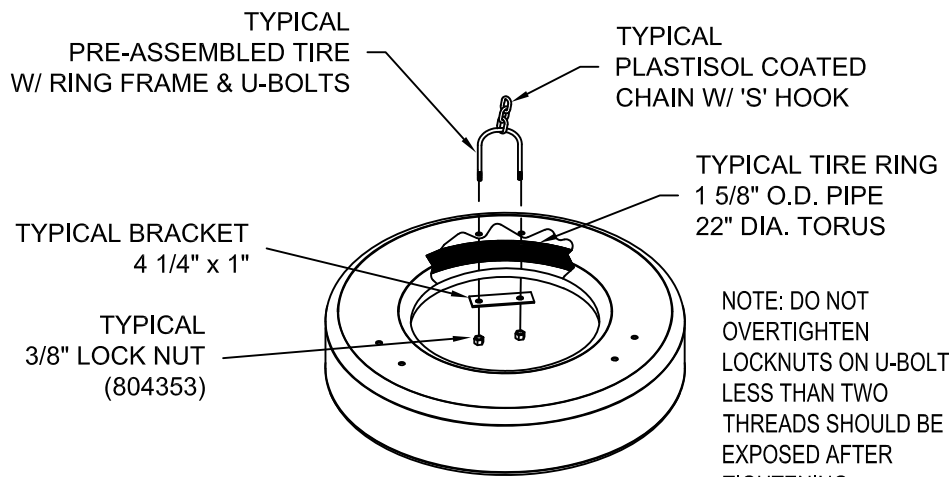
Model No: _____

Desc: _____

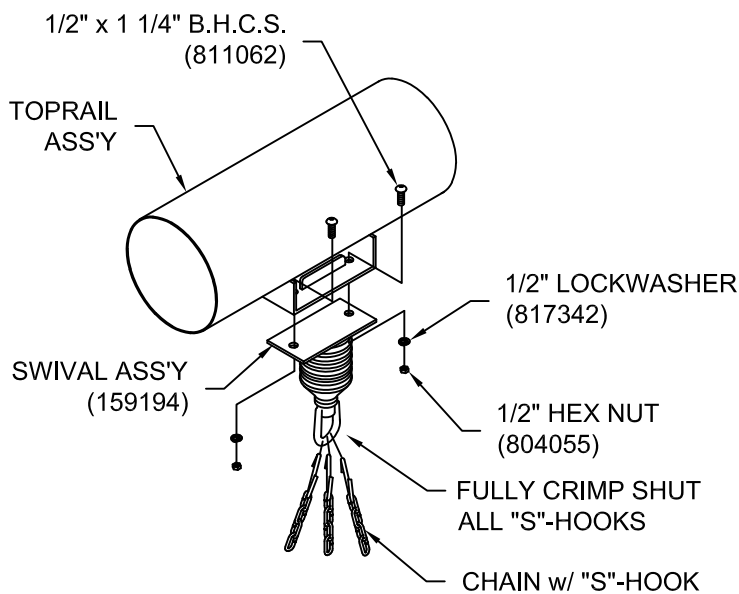
MODEL NO. 67567 5" O.D. ARCH TIRE SWING MODEL NO. 67652 ADD-A-BAY ARCH TIRE SWING



DETAIL 'A'



DETAIL 'B'



DETAIL 'C'