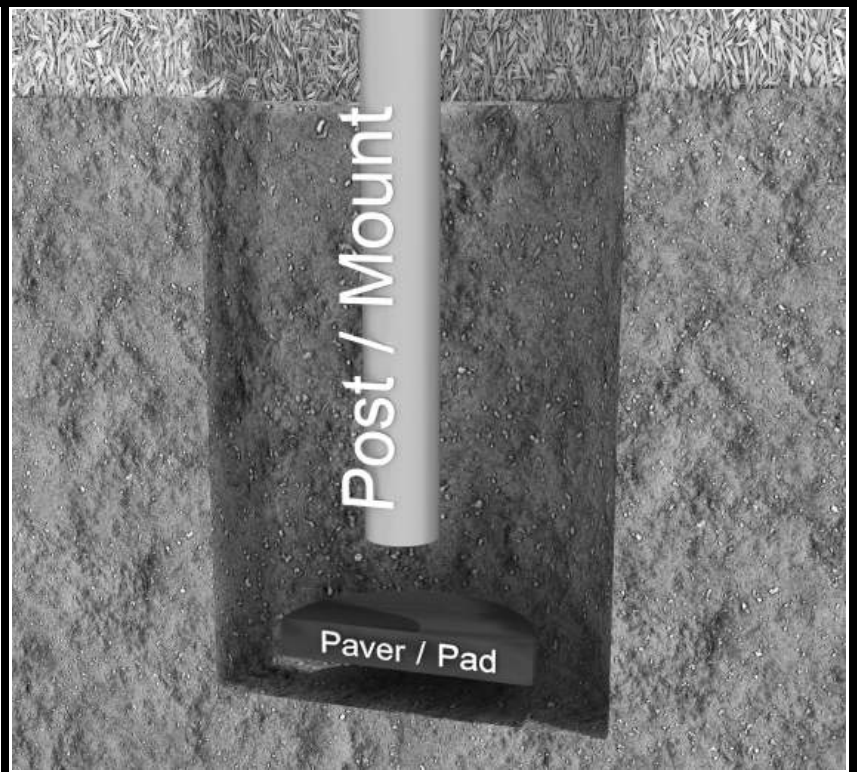


Inground Post/Mount Installation

STEP: 1

**DO NOT CEMENT POSTS/MOUNTS
INTO PLACE UNTIL THE ENTIRE
STRUCTURE IS ASSEMBLED.**

Refer to the General Installation
guide footing size information and
digging proper holes for the support
posts/mounts.



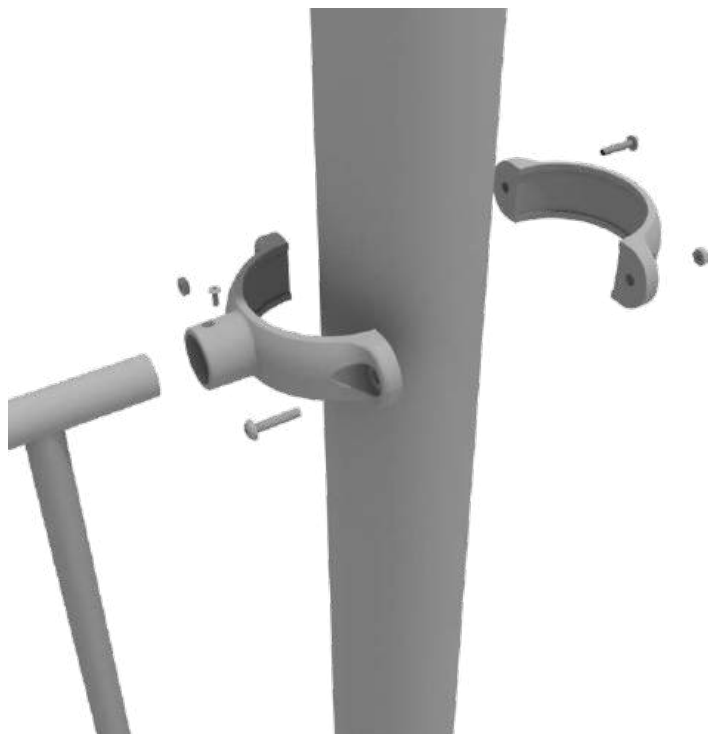
10859 E Washington St. Suite 200
Indianapolis, IN 46229
1-800-667-0097

Created By: Gage Brown
Date: 04/26/2018

5.0-inch Clamp Installation Guide

5.0-inch Tube Clamp

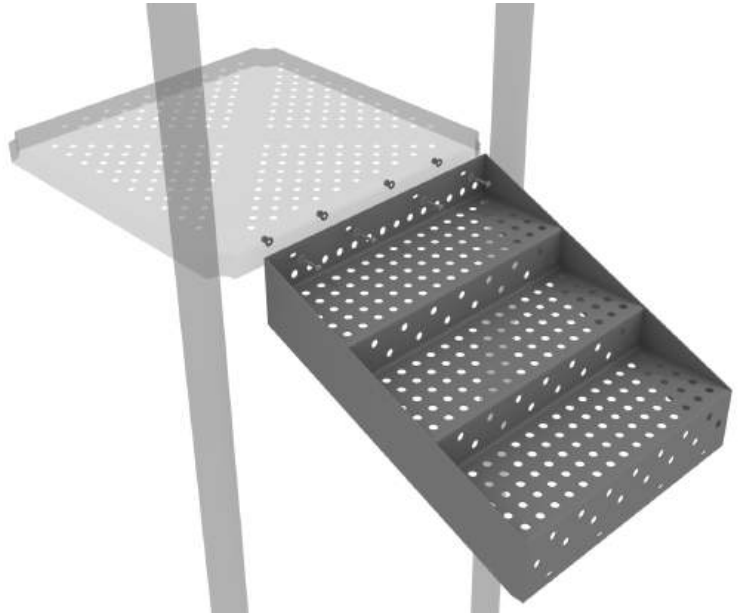
Insert Bar on Component into one half of the Tube Clamp and attach with M4*25 Set Screw. Then, using the other half of the tube clamp and the hardware provided in the clamp hardware bag, attach the other half of the tube clamp around the post.



5.0-inch 3-foot Transfer Station Install

STEP: 1

Using four (4) M10*25 Bolts, eight (8) M10 Washers, and four (4) M10 Lock Nuts, attach the top of the stairs to the deck.



STEP: 2

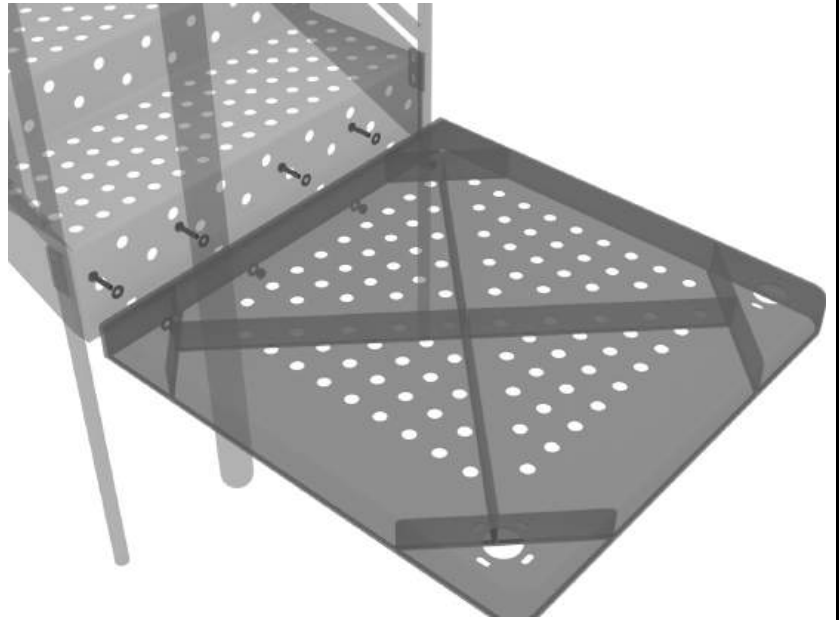
Attach the ADA Transfer Stair Handrails to the posts using Tube Clamps. Then using six (6) M10*25 Bolts, twelve (12) M10 Washers, and six (6) M10 Lock Nuts, attach the handrail to the bottom and side of the stairs.



5.0-inch 3-foot Transfer Station Install

STEP: 3

Using four (4) M10*25 Bolts, eight (8) M10 Washers, and four (4) M10 Lock Nuts, attach the ADA transfer deck to the base of the 3-foot ADA transfer stair.



STEP: 4

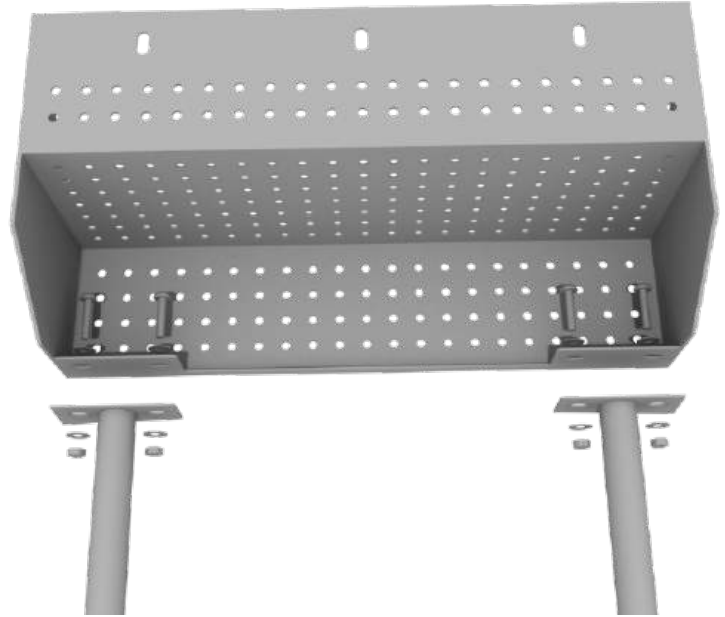
See general installation guide regarding footing information for the transfer deck handrail. Using four (4) M10*25 Bolts, eight (8) M10 Washers, and four (4) M10 Lock Nuts, attach each transfer deck handrail to the ADA transfer deck.



5.0-inch 4-foot Transfer Station Install

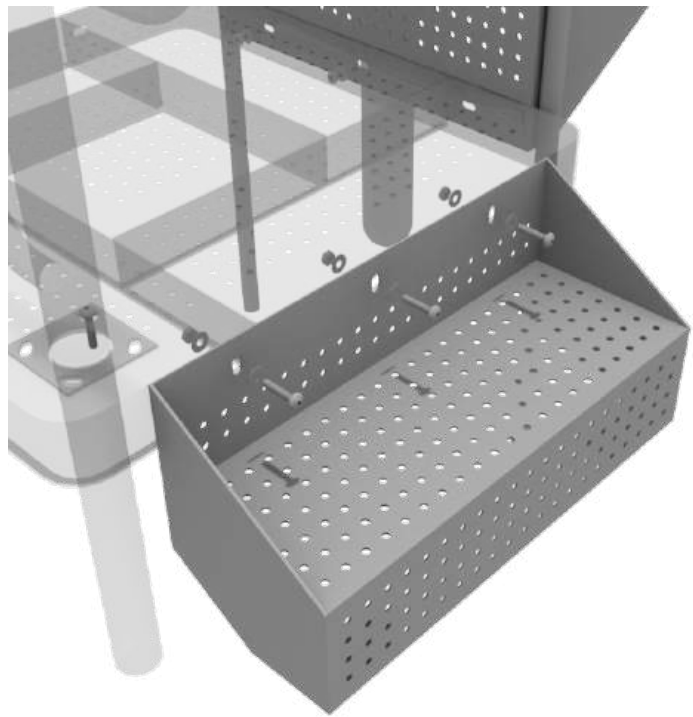
STEP: 5

See general installation guide regarding footing information for the ADA transfer step mount. Using two (2) M10*25 Bolts, four (4) M10 Washers, and two (2) M10 Lock Nuts, attach the transfer step to each ADA transfer step mounts.



STEP: 6

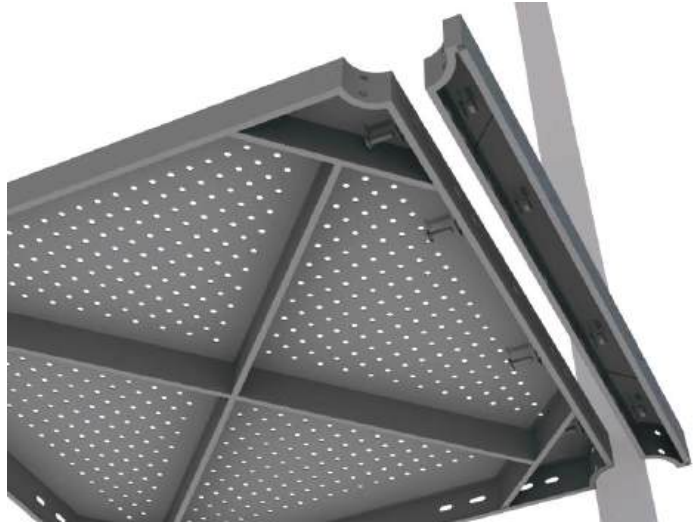
Using three (3) M10*25 Bolts, six (6) M10 Washers, and three (3) M10 Lock Nuts, attach the top of the ADA transfer step to the ADA transfer deck.



Deck Extension Installation

STEP: 1

Attach the deck extension using six (6) M10*25 bolts, twelve (12) M10 washers, and six (6) M10 lock nuts.



STEP: 2

After the posts are in place, use two (2) M10*35 bolts, four (4) M10 Washers, and two (2) M10 Lock nuts, to attach the deck extension to the pre-attached deck clamps.

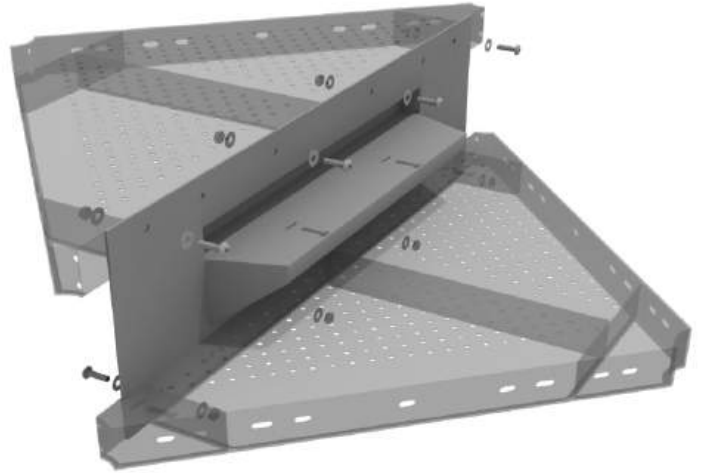
Deck Clamps are pre-attached to the posts and should not be altered in any way.



Kickplate for Right Triangle Deck Install

STEP: 1

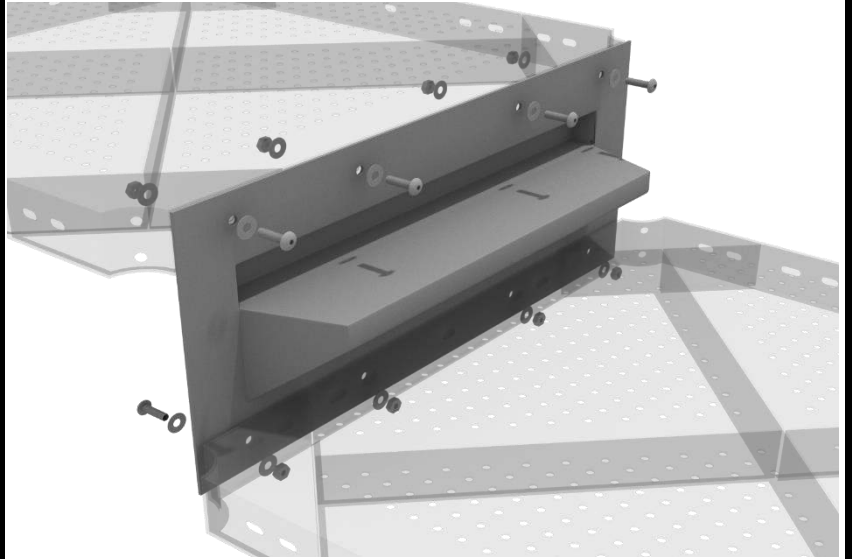
Using eight (8) M10*25 bolts, sixteen (16) M10 washers, and eight (8) M10 lock nuts, attach the kickplate to the proper decks.



Kickplate Install

STEP: 1

Using eight (8) M10*25 bolts, sixteen (16) M10 washers, and eight (8) M10 lock nuts, attach the kickplate to the proper decks.



Right Triangle Deck Installation

STEP: 1

After the posts are in place, using three (3) M10*35 bolts, six (6) M10 washers, and three (3) M10 lock nuts, attach the triangle deck to each pre-attached deck clamp as shown in the image.

Deck clamps are pre-attached to the posts and should not be altered in any way.



Square Deck Installation

STEP: 1

After the posts are in place, using four (4) M10*35 Bolts, eight (8) M10 Washers, and four (4) M10 Lock Nuts, attach each square deck to each pre-attached deck clamp as shown in the image.

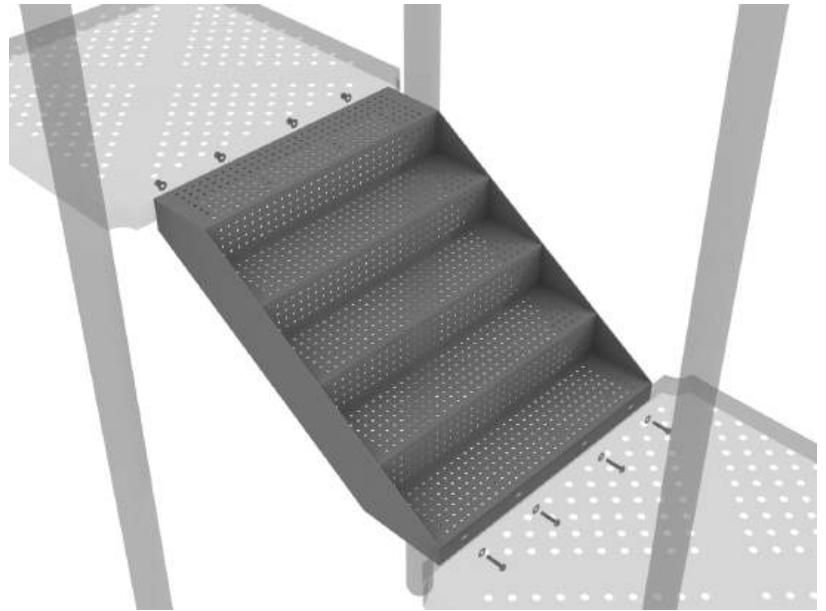
Deck clamps are pre-attached to the posts and should not be altered in any way.



5.0-inch 2-Foot Middle Stair Install

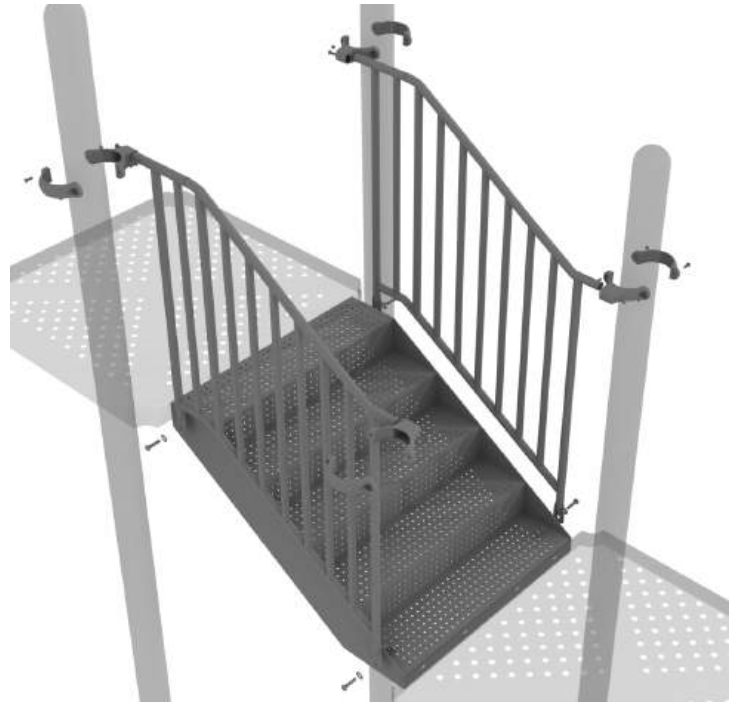
STEP: 1

Using eight (8) M10*25 Bolts, sixteen (16) M10 Washers, and eight (8) M10 Lock Nuts, connect the middle stair from one deck to the next.



STEP: 2

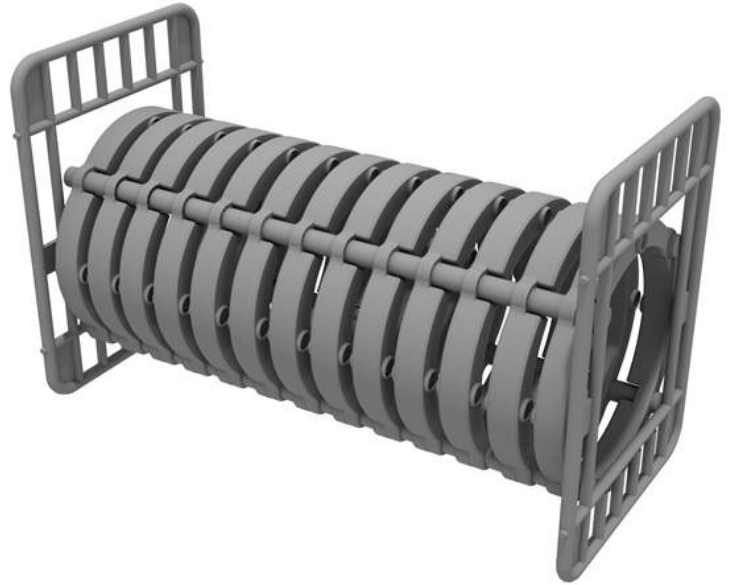
Connect half of each 5.0-inch tube clamp to the middle handrail using one (1) M8*35 Bolt. Set the handrail into place, then attach the second half of the clamp using the hardware provided in the clamp bag. Repeat this process for the other handrail. Then, using two (2) M10*25 Bolts, four (4) M10 Washers, and two (2) M10 Lock Nuts, attach the bottom of the handrail to the side of the stair.



Bones Tunnel Bridge Install

Deck: Connect Bones Bridge Tunnel to corresponding deck using two (2) M10*25 bolts, four (4) M10 washers and four (4) M10 Lock Nuts for each side.

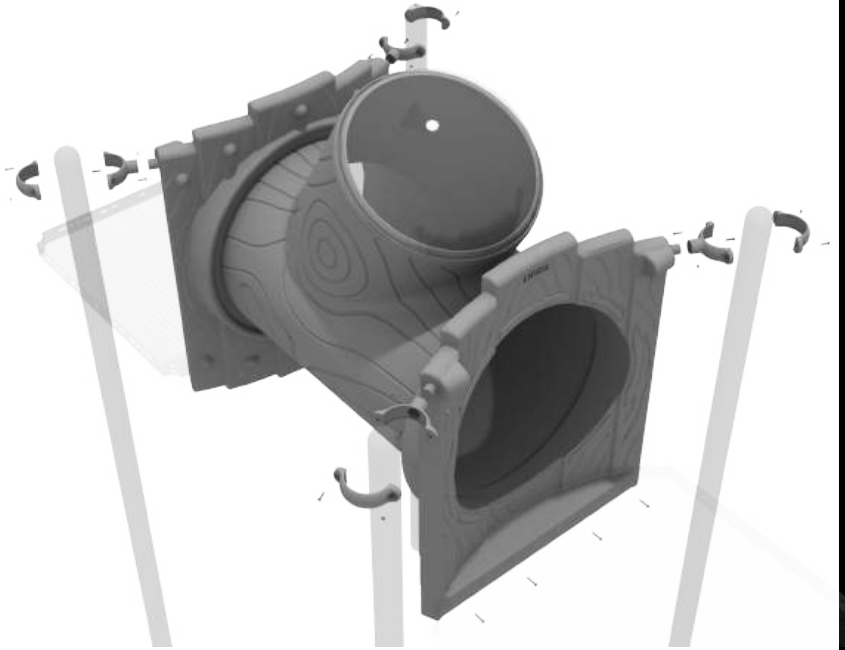
Post: Connect top of bridge bar with clamp using one (1) M4*25 self tapping screw. Use remaining hardware in clamp bag to secure clamp to post.



Treehouse Tube Bridge with Window Installation

STEP: 1

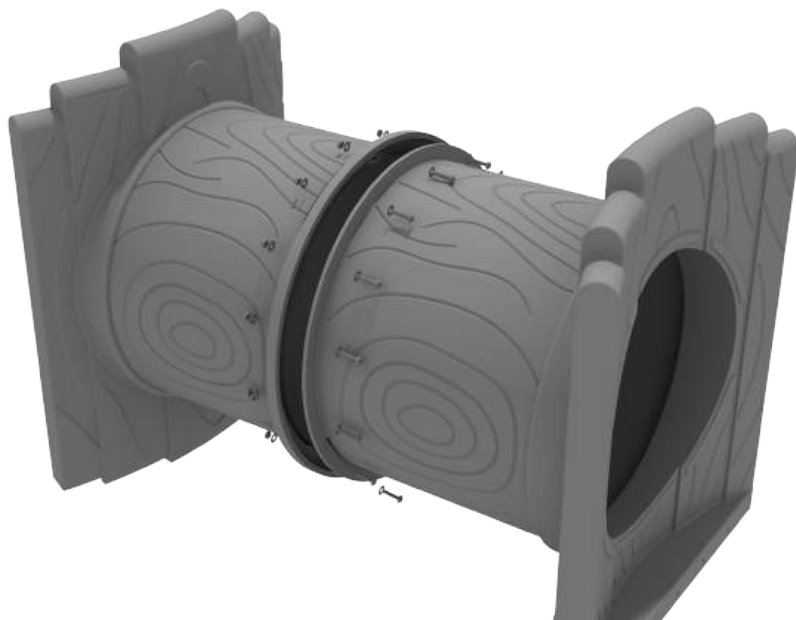
Attach each side of the tube bridge to the proper deck using four (4) M10*50 bolts, eight (8) M10 washers, and four (4) M10 lock nuts. Then, attach the top of the tube bridge to the posts using one (1) tube clamp. View standard clamp attachment guide for more information.



Treehouse Tube Bridge Installation

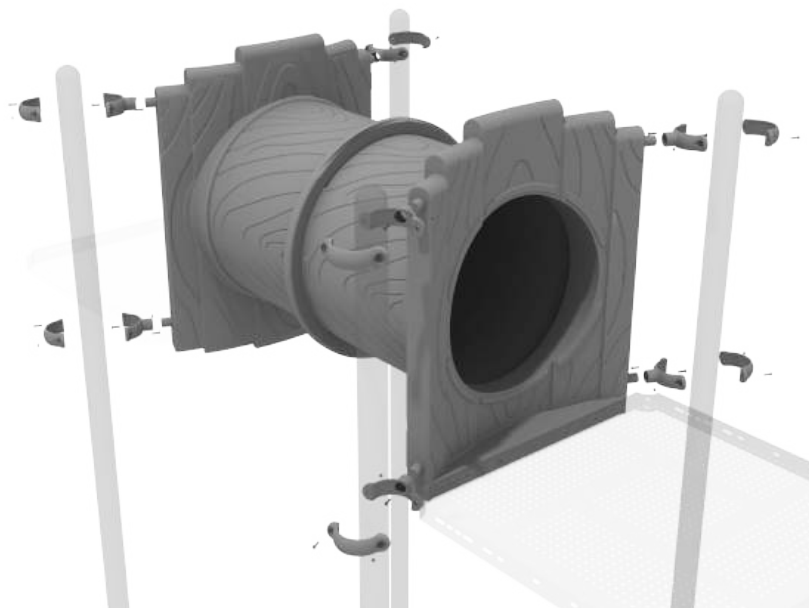
STEP: 1

Take both sections of the tube bridge and attach them together using ten (10) M8*30 bolts, twenty (20) M8 washers, and ten (10) M8 lock nuts.



STEP: 2

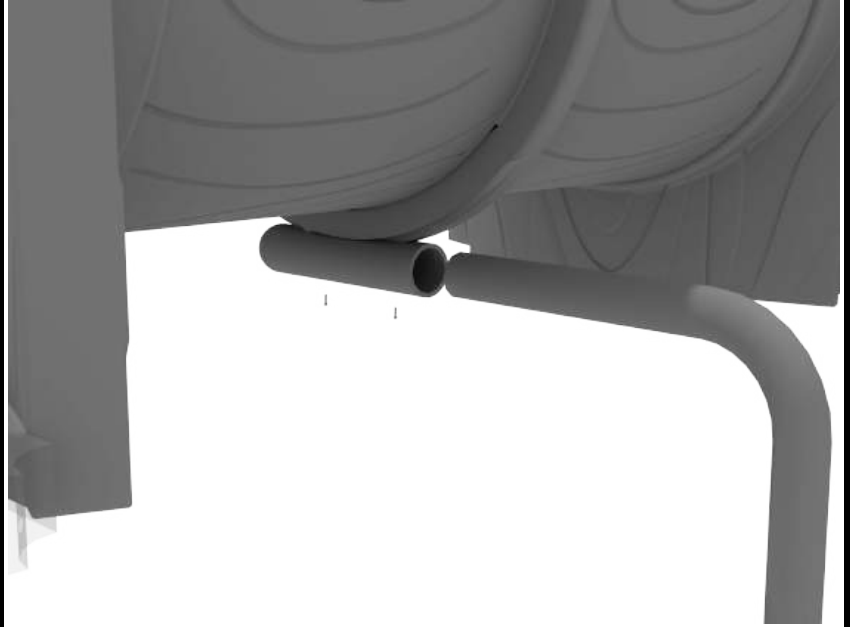
Attach the top and bottom of the tube bridge to the posts using one (1) tube clamp, one (1) M8*40 bolt, one (1) M8 washer, and one (1) M8 lock nut for each post attachment point.



Treehouse Tube Bridge Installation

STEP: 3

See general installation guide regarding footing information for the tube bridge support. Loosen the set screw pre-attached to the tube support bracket and insert the L-shaped support. Then screw the set screws back into place.

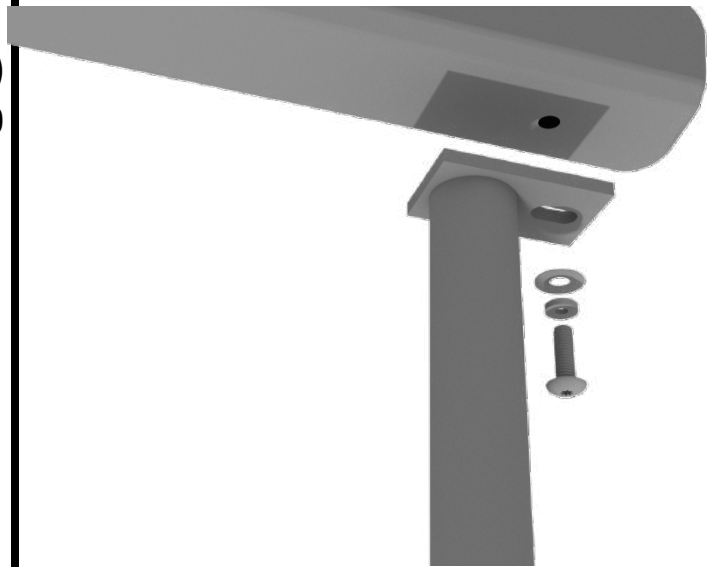


Bamboo Arch Climber Installation

See general installation guide regarding footing information for the Bamboo Arch climber. Attach the climber to the deck using five (5) M10*25 bolts, five (5) M10 spring washers and five (5) M10 washers.



Using two (2) M10*20 bolts, two (2) M10 spring gaskets, and two (2) M10 washers, attach the bottom of the bamboo climber to the climber end mounts.



Paw Print Climber Installation

See general installation guide regarding footing information for climbers.

Using two (2) M10*20 Bolts, two (2) M10 Spring Gaskets, and two (2) M10 Washers, attach the bottom of the Paw Print climber to the climber support posts.

Then, using three (3) M10*35 Bolts, three (3) M10 Spring Washers, and three (3) M10 Washers, attach the Paw Print climber to the deck.



Stump Climber Installation

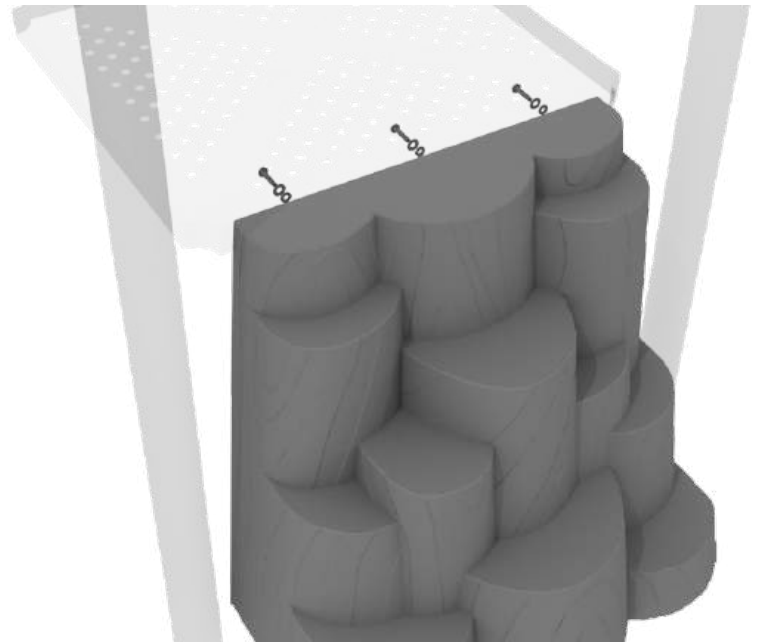
STEP: 1

See general installation guide regarding footing information for climbers. Using two (2) M10*20 Bolts, two (2) M10 Spring Gaskets, and two (2) M10 Washers, attach the bottom of the rock whole climber to the climber support posts.



STEP: 1

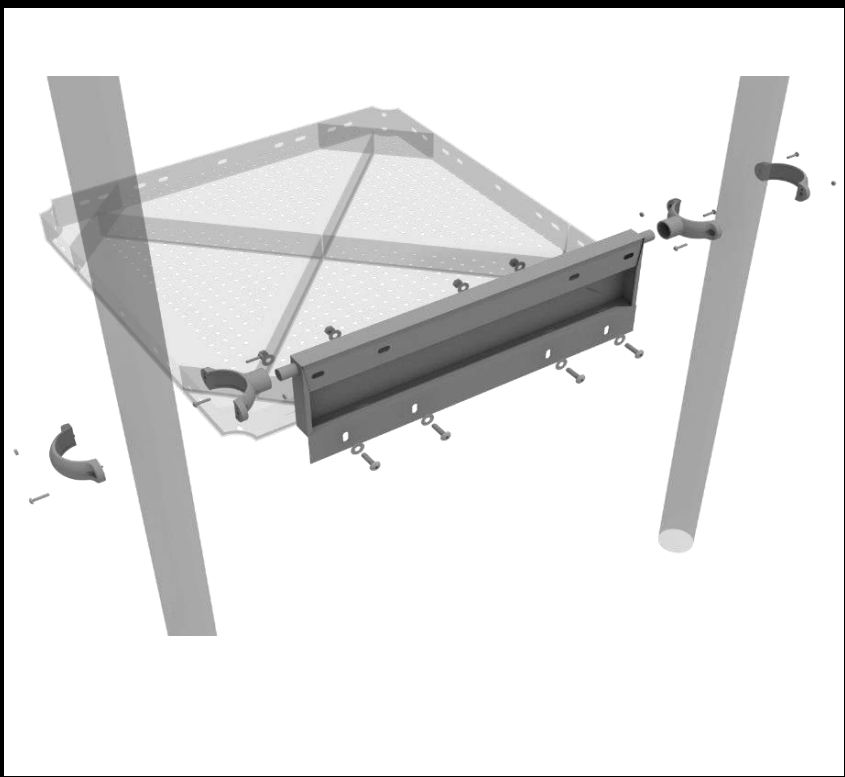
Then, using three (3) M10*35 Bolts, three (3) M10 Spring Washers, and three (3) M10 Washers, attach the Rock hole climber to the deck.



Spiral Slide Installation

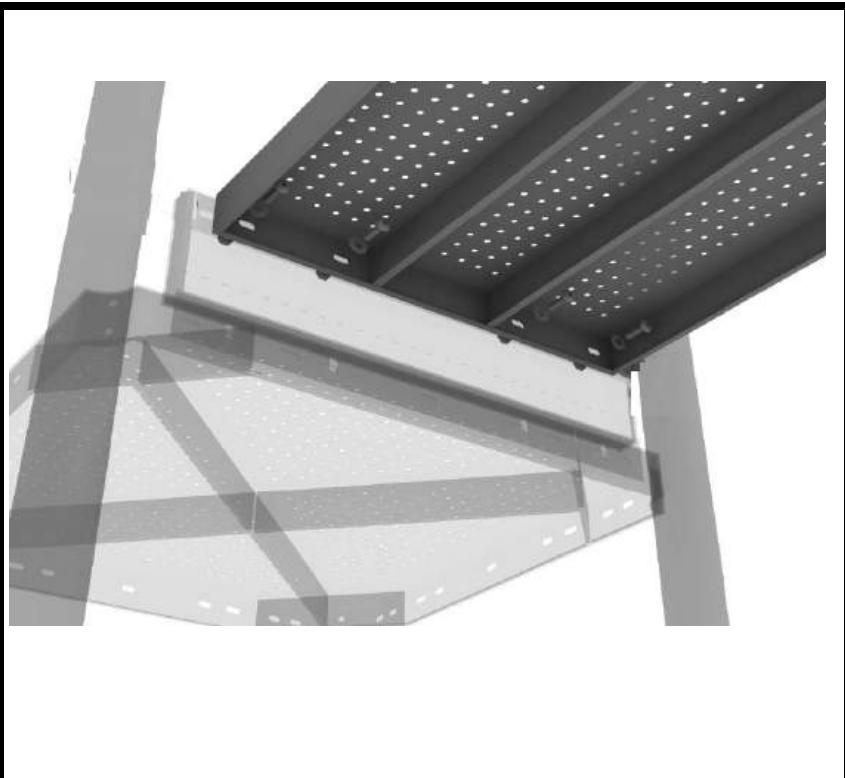
STEP: 1

Attach the spiral slide kick plate to the proper square deck using four (4) M10*25 bolts, eight (8) M10 washers, four (4) M10 lock nuts.



STEP: 2

Attach the spiral slide deck to the top of the spiral slide kick plate using four (4) M10*25 bolts, eight (8) M10 washers, and four (4) M10 lock nuts.



10859 Washington St. Suite
200, Indianapolis, IN
1-800-667-0097

Created By: Derick H
Date: 01/05/2020

Spiral Slide Installation

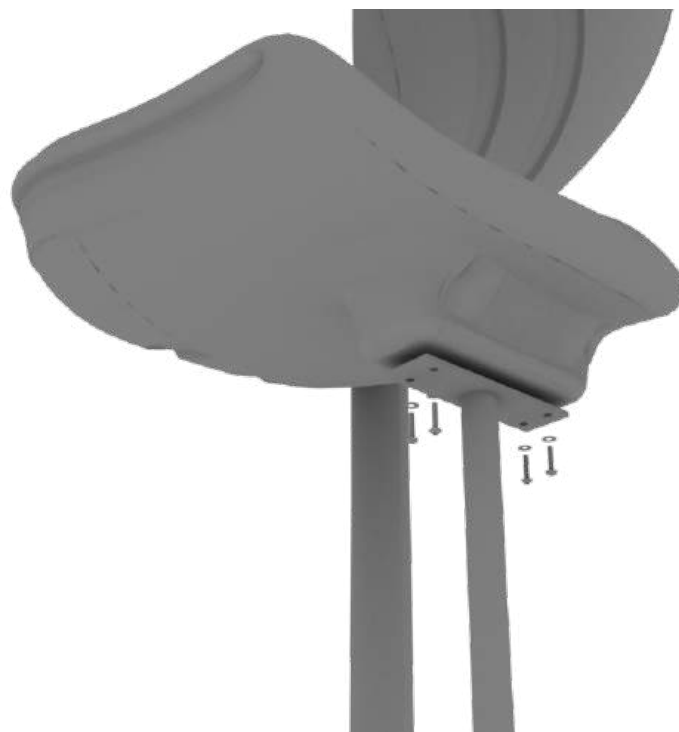
STEP: 3

Attach the Spiral Slide Deck Support Post to the Spiral Slide Deck using two (2) M10*25 Bolts, four (4) M10 Washers, and two (2) M10 Lock Nuts.



STEP: 4

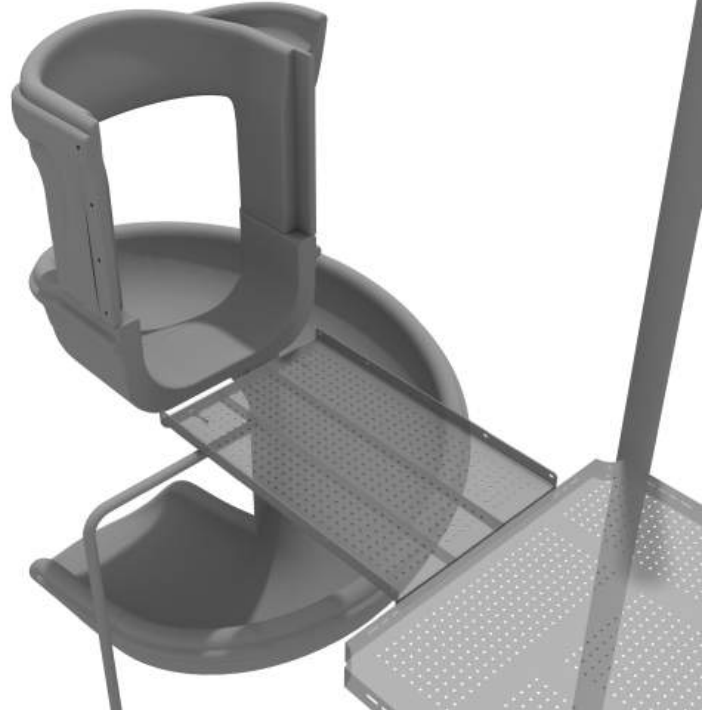
Connect the Spiral Slide Mount to the bottom of the Spiral Slide using four (4) M10*20 Bolts, four (4) M10 Spring Gaskets, and four (4) M10 Washers. Refer to the General Installation Guide for information on slide footings.



Spiral Slide Installation

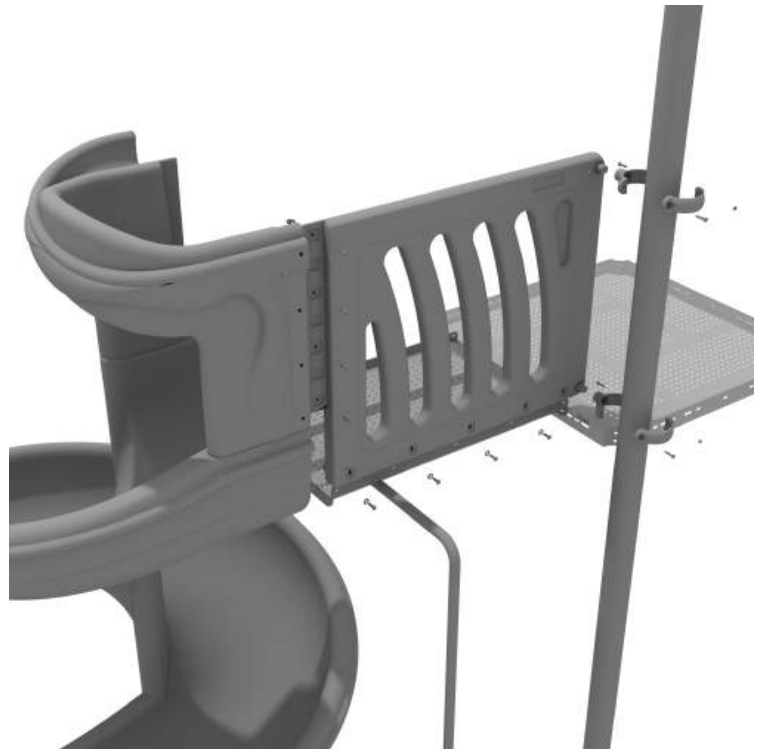
STEP: 5

See general installation guide regarding footing information for slides and support posts. Connect the Spiral Slide to the Spiral Slide Deck using three (3) M10*20 Bolts, three (3) M10 Spring Gaskets, and three (3) M10 Washers.



STEP: 6

Attach the Spiral Slide Handrail to the Spiral Slide Deck using five (5) M8*60 Bolts, five (5) M8 Washers, five (5) M12 Washers, and five (5) M12 Inner Hex Nuts. Connect spiral slide panels to slide using four (4) M10*50 bolts, four (4) M10 washers, four (4) M10 lock nuts for each panel. Connect the handrails to the posts using two (2) tube clamps. Repeat this process for the other handrail.

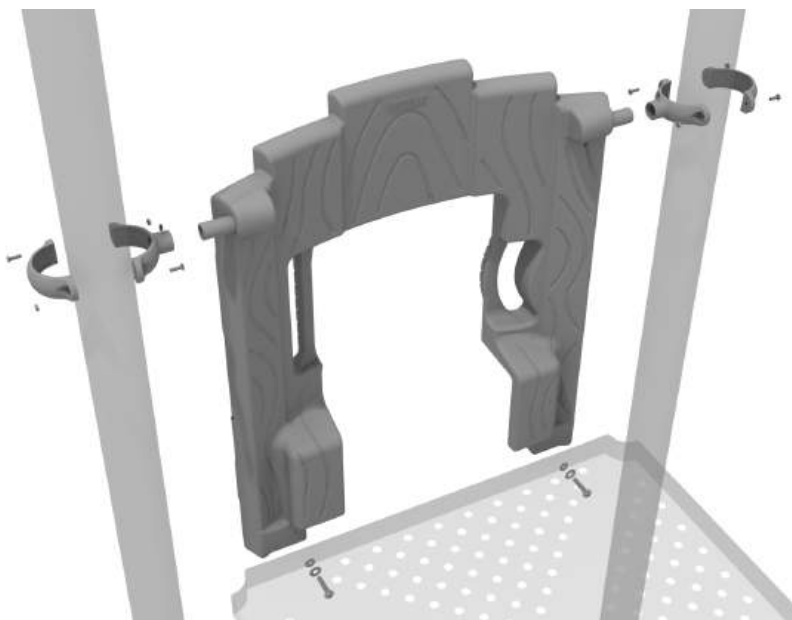


3-foot Tree House Right Turn Slide Installation

STEP: 1

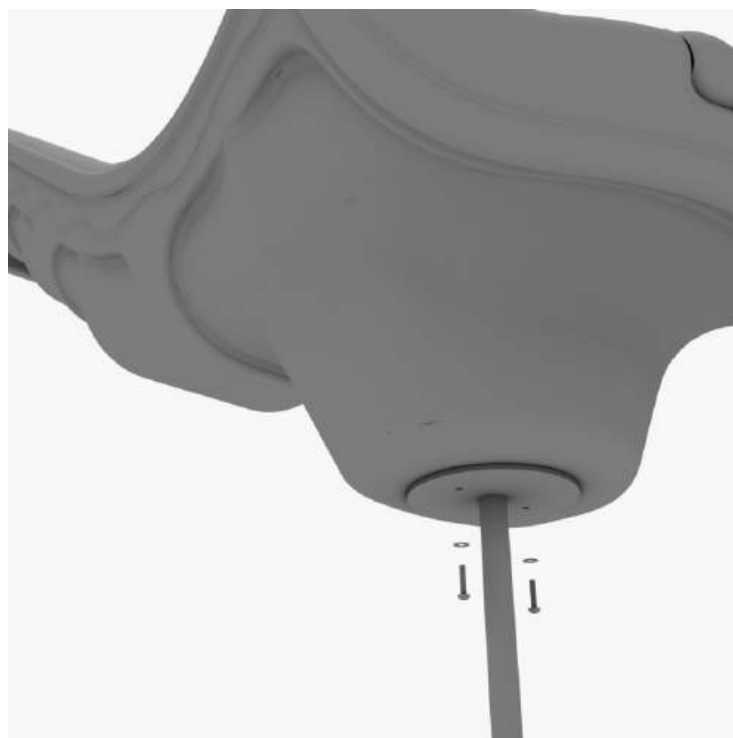
To attach the tree house slide hood to a deck, take two tube clamps and attach them to the posts using two (2) M4*25 self-tapping screws.

Then, attach the hood to the deck using two (2) M10*20 bolts, two (2) spring washer, four (4) M10 washers, and two (2) M10 lock nuts. Repeat this process for every single slide hood.



STEP: 2

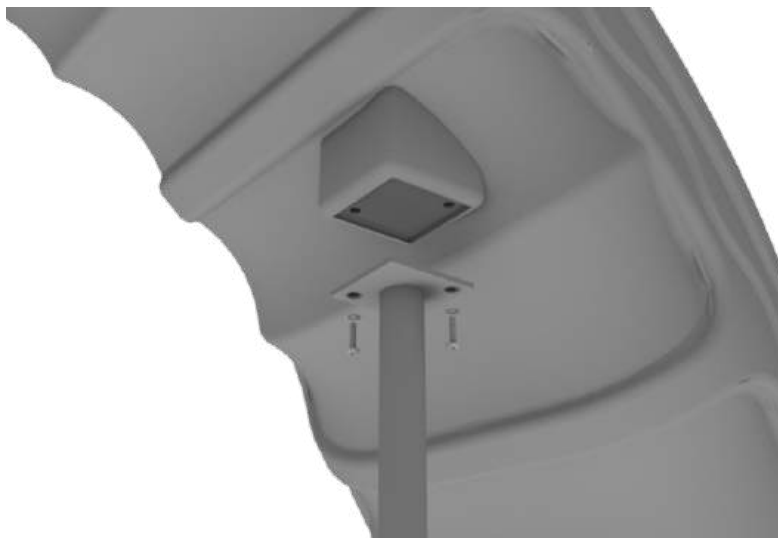
See general installation guide regarding footing information for the slide end mount. Using two (2) M8*20, two (M8) spring washers. And two (2) M8 washers, attach the slide to the slide support post.



3-foot Tree House Right Turn Slide Installation

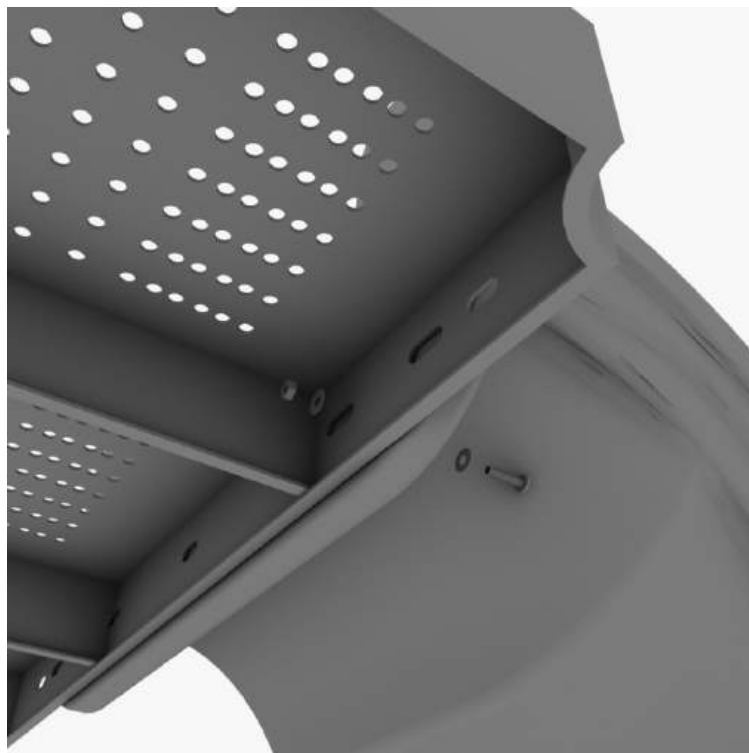
STEP: 3

See general installation guide regarding footing information for the middle slide support. Using two (2) M8*20 bolts, two (2) M8 spring washers, and two (2) M8 washers, attach the middle slide support post.



STEP: 4

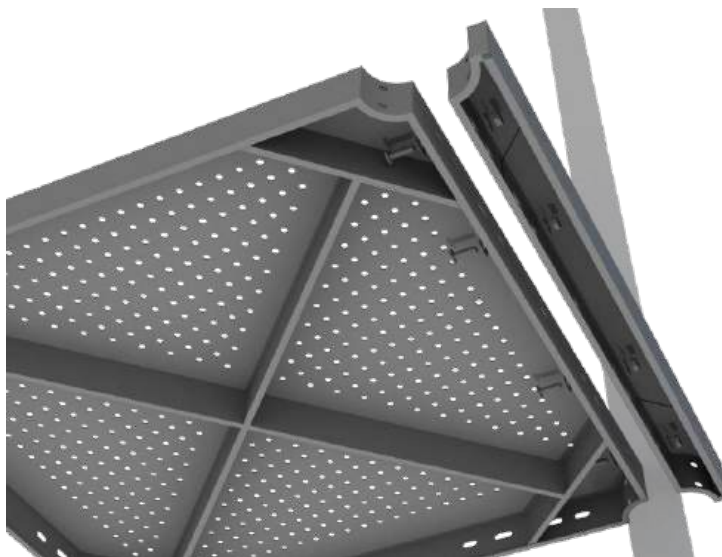
Using one (1) M10*45 bolt, two (2) M10 washers, and two (2) M10 lock nuts, attach one side of the slide to the deck.



4-foot Double Straight Slide Installation

STEP: 1

Attach the deck climber extension to the proper deck using four (4) M10*25 bolts, eight (8) M10 washers, and four (4) M10 lock nuts.



STEP: 2

Then, See general installation guide regarding footing information for the double slide end mounts. Using two (2) M8*20 bolts, two (2) M8 spring gaskets, and two (2) M8 washers, attach the slide end mounts to the double slide.



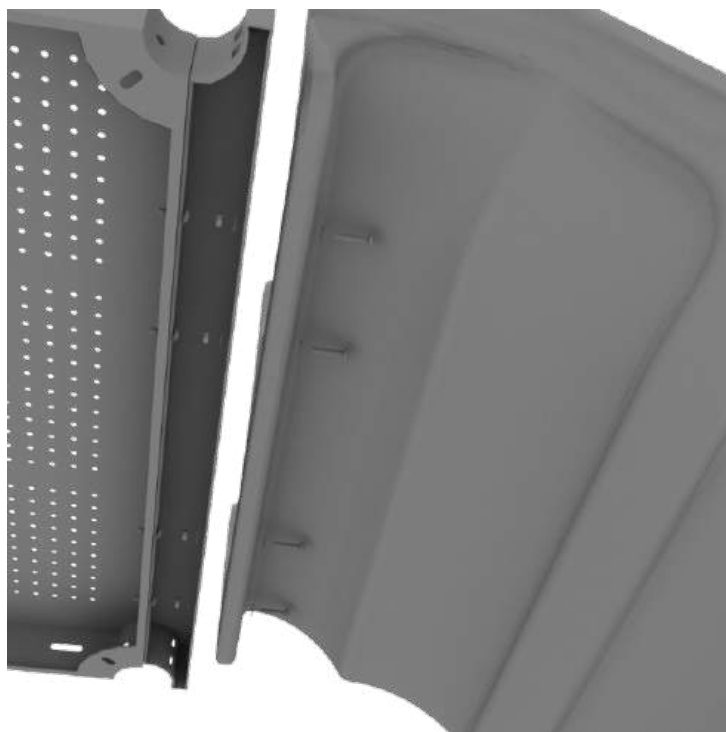
1 Playground Drive
Greenfield, IN 46140
1-800-667-0097

Created By: Aaron Price
Date: 04/10/2018

4-foot Double Straight Slide Installation

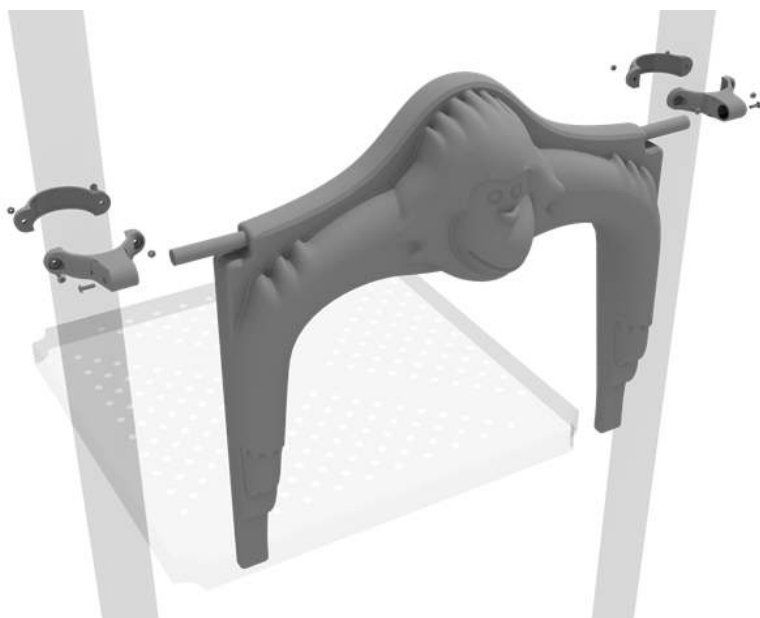
STEP: 3

Then, attach the slide to the deck extension using four (4) M10*45 bolts, eight (8) M10 washers, and four (4) M10 lock nuts.



STEP: 4

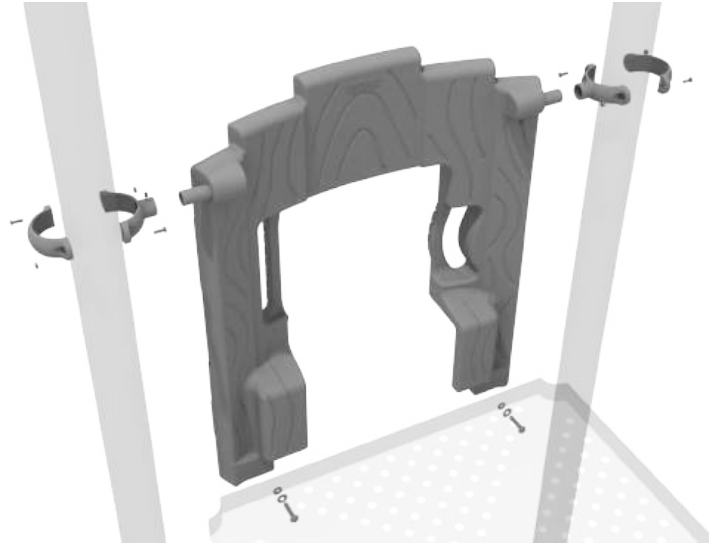
Once the slide is attached, take the tree house double slide hood and insert hood into the top of the slide, and then attach the top using two (2) double slide clamps, and two (2) M8*30 bolts.



6-foot Single Straight Slide Installation

STEP: 1

To attach the tree house slide hood to a deck, take two tube clamps and attach them to the posts using two (2) M4*25 self-tapping screws. Then, attach the hood to the deck using two (2) M10*20 bolts, two (2) spring washer, four (4) M10 washers, and two (2) M10 lock nuts. Repeat this process for every single slide hood.



STEP: 2

See general installation guide regarding footing information for the slide end mount. Using two (2) M8*20, two (M8) spring washers. And two (2) M8 washers, attach the slide to the slide support post.



6-foot Single Straight Slide Installation

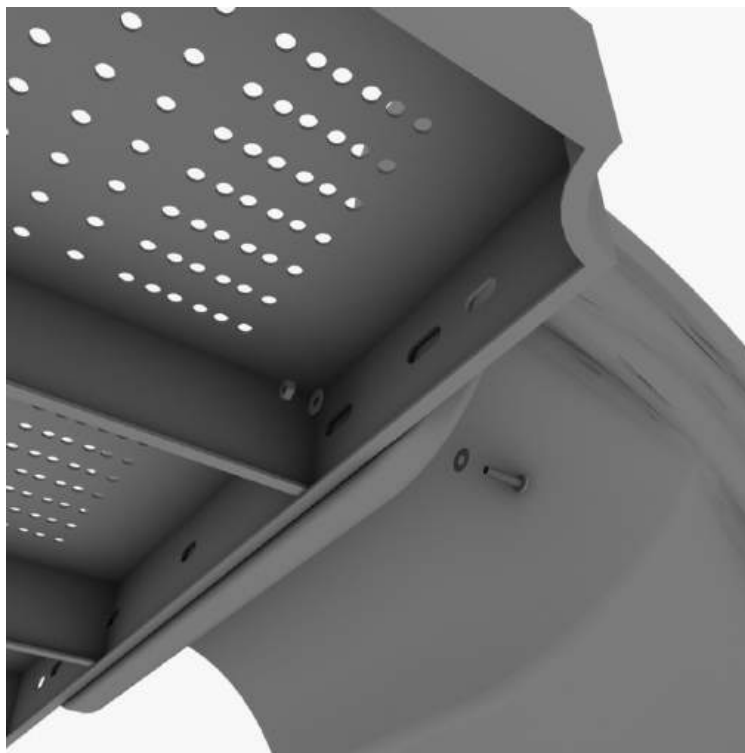
STEP: 3

See general installation guide regarding footing information for the middle slide support. Using two (2) M8*20 bolts, two (2) M8 spring washers, and two (2) M8 washers, attach the middle slide support post. Repeat the process for each middle slide mount.



STEP: 4

To attach a single slide to a deck, use two (2) M10*45 bolts, four (4) M10 washers, and two (2) M10 lock nuts. Repeat this process for the other side of the slide. Repeat this process for each single slide.



6-foot Single Straight Slide Installation

STEP: 5

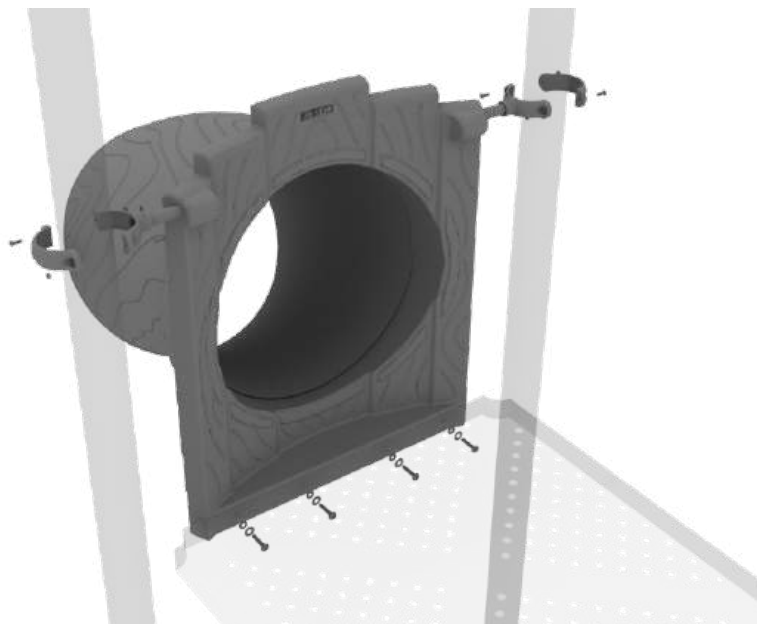
Using two (2) M8*45 bolts, two (2) M8 washer, two (2) M12 washers, and one (1) M12 inner hex spiral nut, attach the slide to the slide hood. Repeat this process for the other side of the slide.



Treehouse Tube Slide Installation

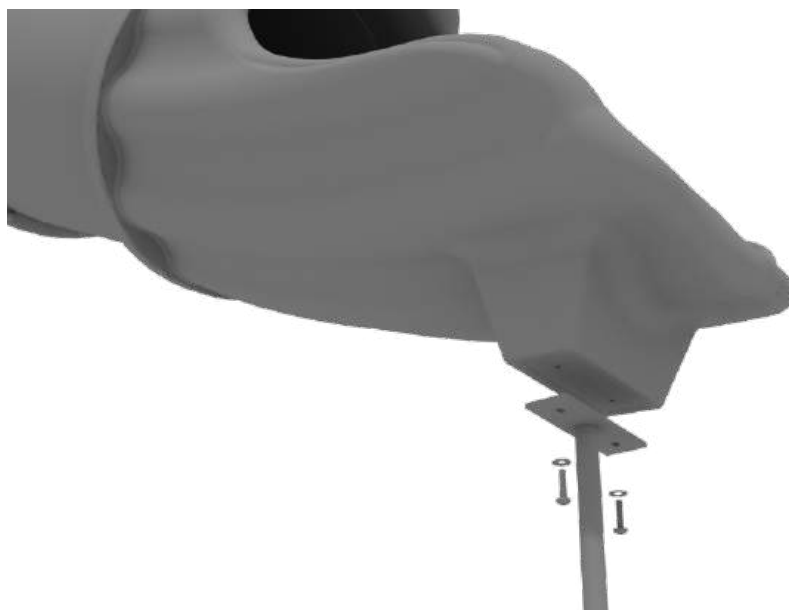
STEP: 1

Attach the Slide Entrance Panel to the designated posts using two (2) tube clamps and two (2) M4*25 Set Screws. Then, attach the bottom of the panel to the deck using four (4) M10*20 Bolts, four (4) M10 Washers, and four (4) M10 Lock Nuts.



STEP: 2

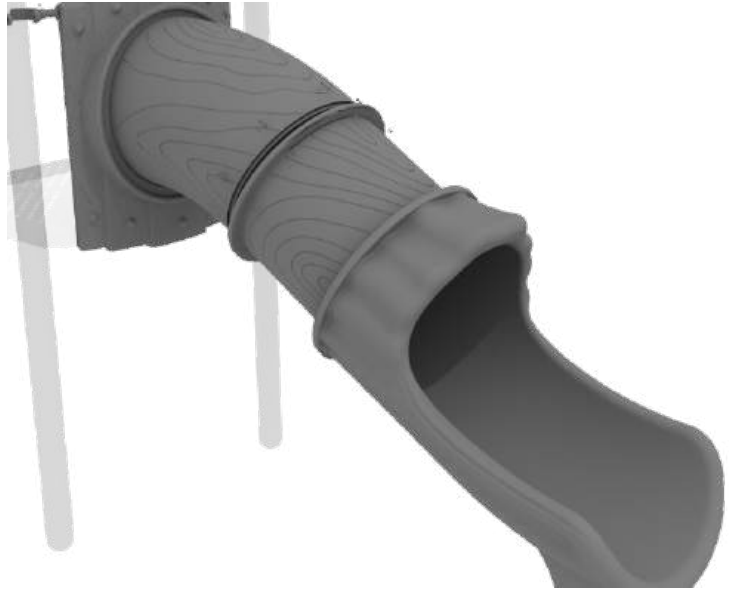
See general installation guide regarding footing information for the tube slide mount. Attach the slide end mount to the bottom of the slide using four (4) M10*20 Bolts, four (4) M10 Spring Washers, and four (4) M10 Washers.



Treehouse Tube Slide Installation

STEP: 3

Finally, connect the tube slide together using ten (10) M8*30 Bolts, ten (10) M8 Washers, and ten (10) M8 Lock Nuts for each connection point.



STEP: 4

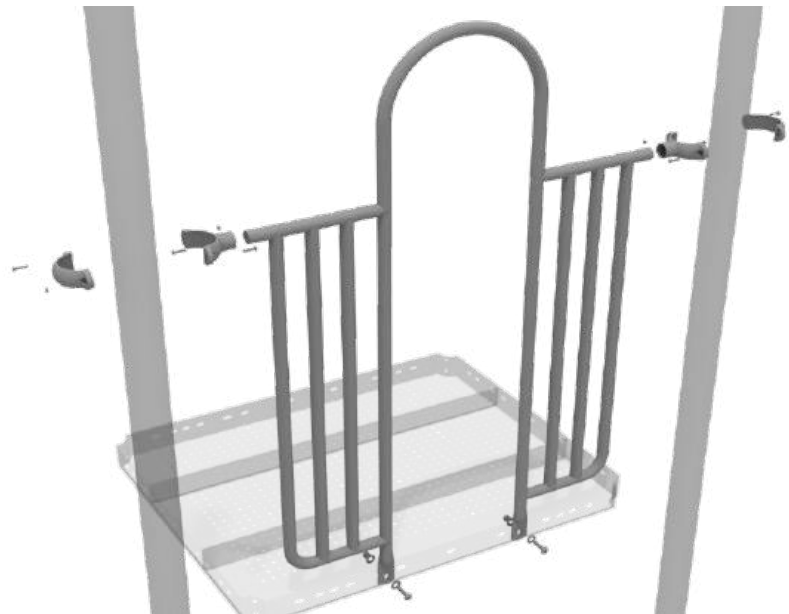
Attach the tube slide supports to the slide support brackets by inserting the support into the slot of the support bracket under the slide and tighten the Set Screws to secure.



5.0-inch 2-Clamp Arch Rail Installation

STEP: 1

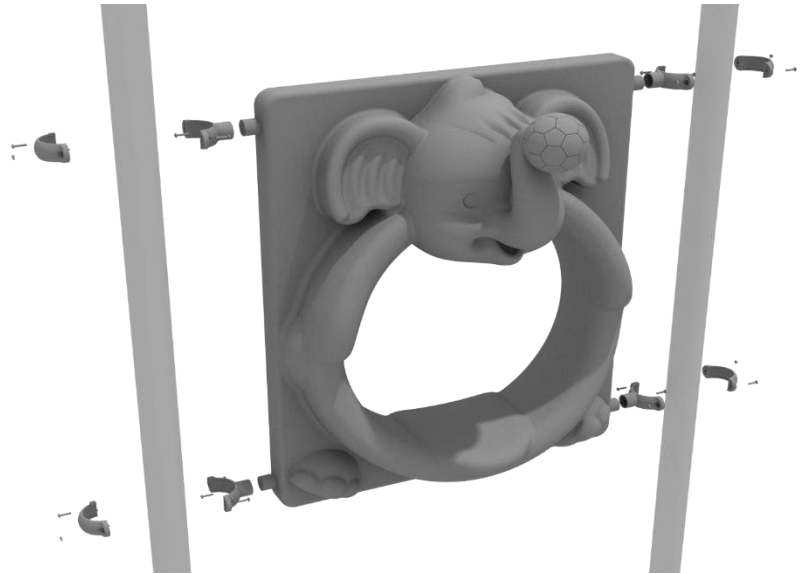
Attach each two-clamp arch rail to the designated deck by using two 5.0-inch Tube Clamps. Then use two (2) M10*25 Bolts, four (4) M10 Washers, and two (2) M10 Lock Nuts to attach the panel to the deck.



5.0-inch Elephant Panel Installation

STEP: 1

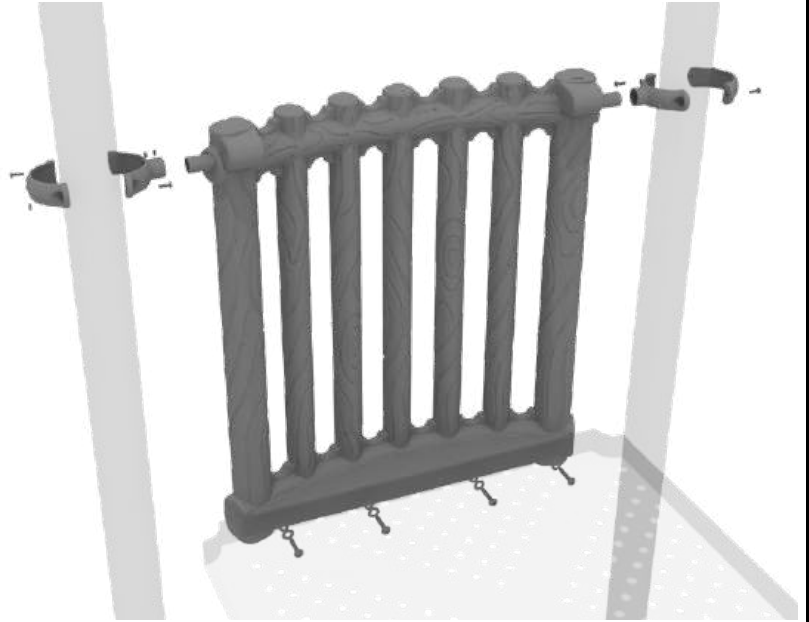
Attach the Elephant Panel to the designated posts using four (4) 5-inch tube clamps, and four (4) M8*25 bolts.



5.0-inch Bamboo Panel Installation

STEP: 1

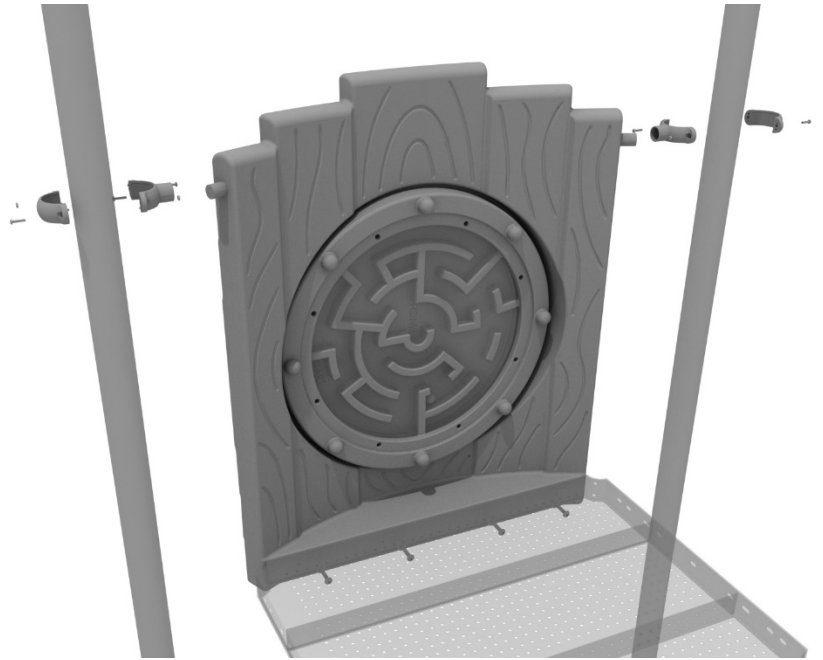
Attach the Bamboo Panel to the designated posts using two (2) tube clamps and two (2) M4*25 Set Screws. Then, attach the bottom of the panel to the deck using four (4) M10*20 Bolts, four (4) M10 Washers, and four (4) M10 Lock Nuts.



5.0-inch Treehouse Ball Maze Panel Installation

STEP: 1

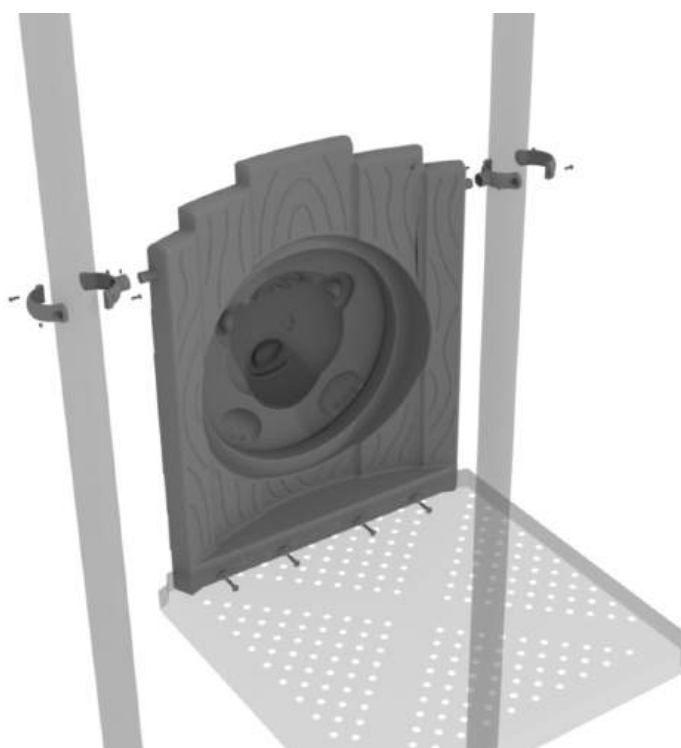
Attach the Treehouse Ball Maze Panel to the designated posts using two (2) tube clamps and two (2) M4*25 Set Screws. Then, attach the bottom of the panel to the deck using four (4) M10*20 Bolts, four (4) M10 Washers, and four (4) M10 Lock Nuts.



5.0-Inch Treehouse Bear Face Panel Installation

STEP: 1

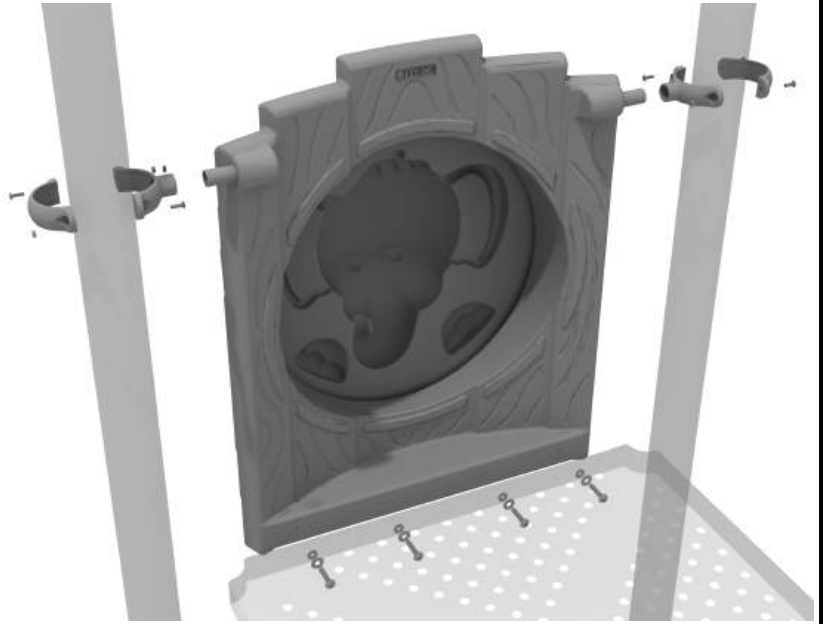
Attach the Treehouse Gear Panel to the designated posts using two (2) tube clamps and two (2) M4*25 Set Screws. Then, attach the bottom of the panel to the deck using four (4) M10*20 Bolts, four (4) M10 Washers, and four (4) M10 Lock Nuts.



5.0-inch Treehouse Elephant Panel Installation

STEP: 1

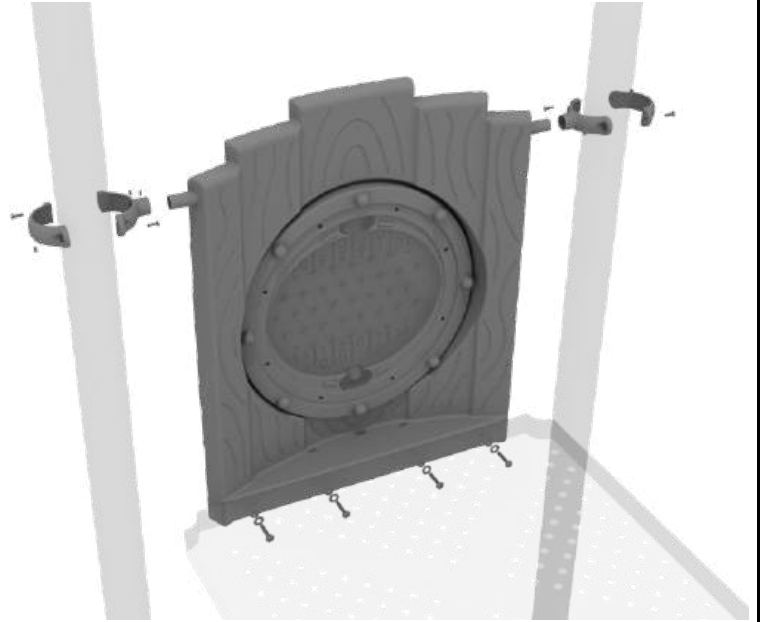
Attach the Treehouse Elephant Panel to the designated posts using two (2) tube clamps and two (2) M4*25 Set Screws. Then, attach the bottom of the panel to the deck using four (4) M10*20 Bolts, four (4) M10 Washers, and four (4) M10 Lock Nuts.



5.0-inch Treehouse Plinko Panel Installation

STEP: 1

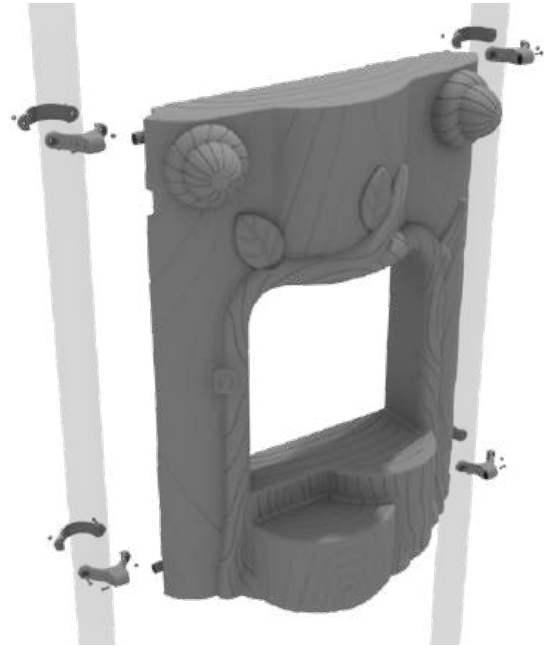
Attach the Treehouse Plinko Panel to the designated posts using two (2) tube clamps and two (2) M4*25 Set Screws. Then, attach the bottom of the panel to the deck using four (4) M10*20 Bolts, four (4) M10 Washers, and four (4) M10 Lock Nuts.



Treehouse Stump Store Panel Installation

STEP: 1

Attach the Treehouse Stump Store Panel using four (4) M4*25 Set Screws for the four (4) tube clamps, clamping around the appropriate post.

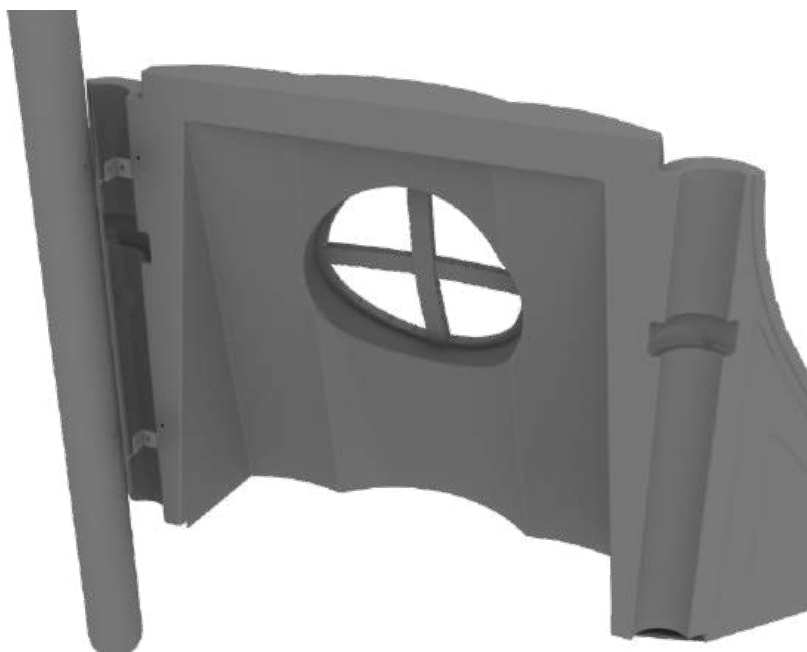


Treehouse Stump Window Panel Installation

STEP: 1

Align the Treehouse Stump Window Panel with the intended posts. The posts have a threaded insert that must be lined up correctly with the Treehouse Stump Window Panel.

Using the provided mounting brackets, attach the panel to the posts with eight (8) M8*30 Bolts, eight (8) M8 Washers, and eight (8) M8 Spring Gaskets.



STEP: 2

The Treehouse Stump Window Panel can attach to a 2nd Treehouse Stump Window Panel using one (1) M8*45 Bolt, and one (1) M10*45 Inner Hex Nut.

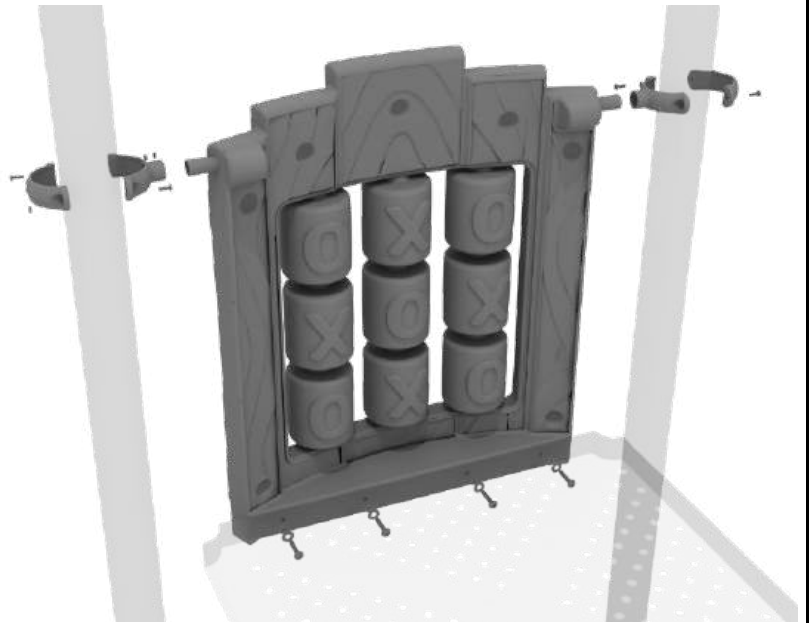
This step does not apply in cases where there is only 1 Treehouse Stump Window Panel.



5.0-inch Treehouse Tic Tac Toe Panel Installation

STEP: 1

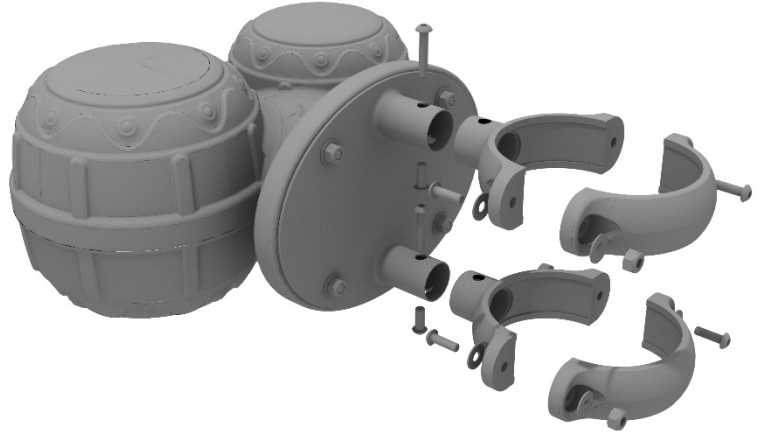
Attach the Treehouse Tic Tac Toe Panel to the designated posts using two (2) tube clamps and two (2) M4*25 Set Screws. Then, attach the bottom of the panel to the deck using four (4) M10*20 Bolts, four (4) M10 Washers, and four (4) M10 Lock Nuts.



Bongos Installation

STEP: 1

Detach half of the tube clamps connected to the Bongos, and re-attach the clamp around the desired support post. Recommended install height is 20 to 36 inches above surfacing depending on age range.

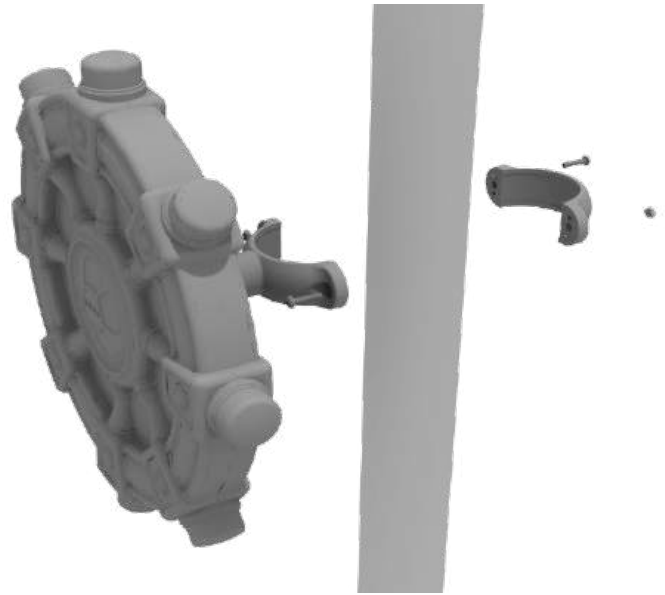


Ships Wheel Installation

Detach half of the tube clamp connected to the Ships Wheel, and re-attach the clamp around the support post, as shown in the picture. Recommended install height is 20 to 36 inches above surfacing depending on age range.

We recommend using Thread-locking fluid on bolts connecting Ship's wheel to clamp to prevent hardware from loosening over time.

(Thread-locker not supplied)

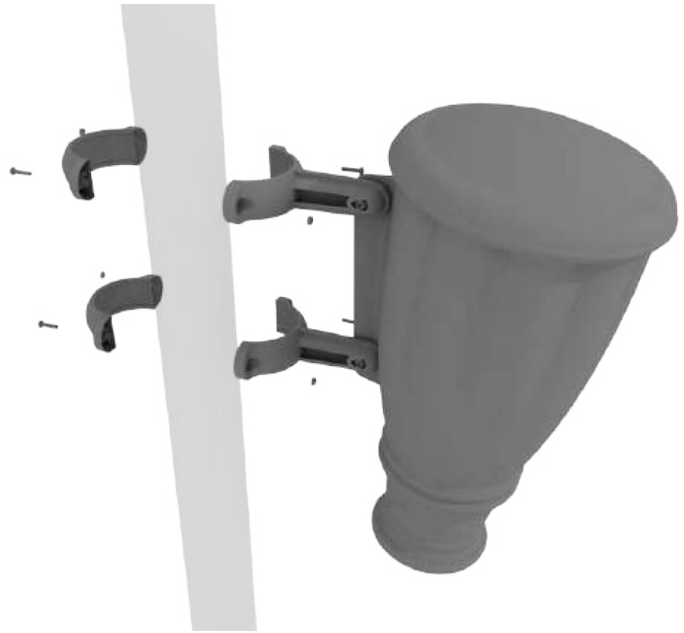


Single Drum Installation

Detach half of the tube clamps connected to the Single Drum, and re-attach the clamps around the support post, as shown in the image. Recommended install height is 20 to 36 inches above surfacing depending on age range.

We recommend using Thread-locking fluid on bolts connecting Single Drum to clamp to prevent hardware from loosening over time.

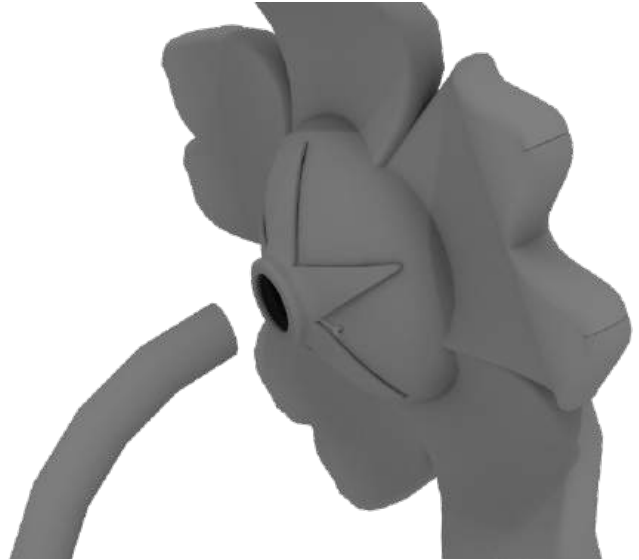
(Thread-locker not supplied)



Palm Flower Face Topper Installation

STEP: 1

Place the Flower Face Topper onto the provided post. Use three (3) M8*35 set screws and three (3) M*8 Washers to attach the Flower Face Topper to the post.



Monkey Topper Installation

STEP: 1

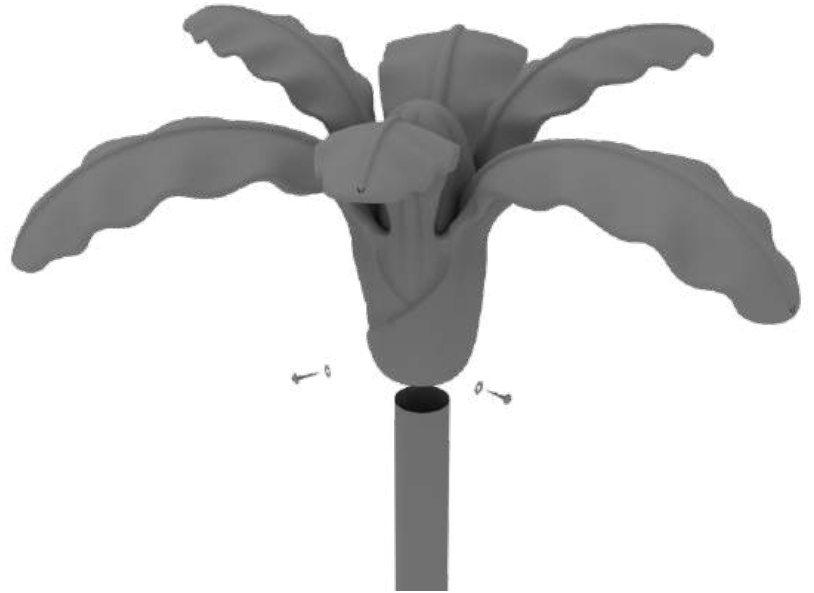
The hardware and clamps come pre-attached to the Monkey Topper. To install undo the bolts holding the two halves of the Tube Clamps together, then place around the desired post and re-assemble the Tube Clamp.



Palm Tree Topper Installation

STEP: 1

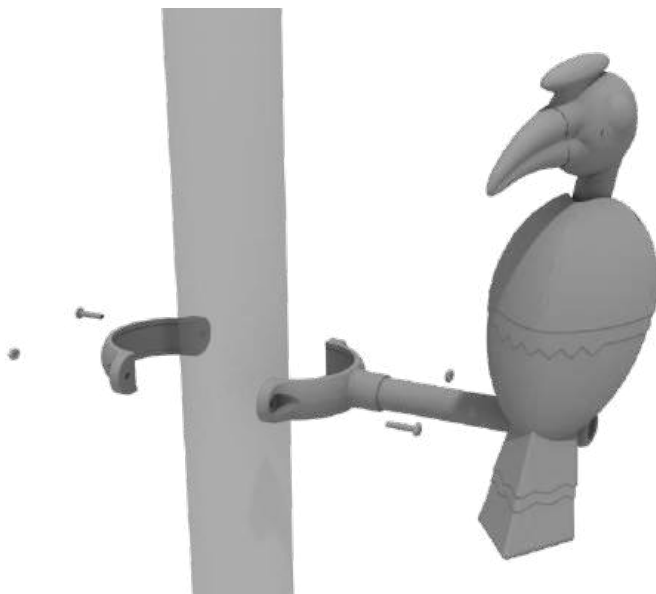
Place the Palm Tree Topper onto the provided post. Use three (3) M8*50 set screws and three (3) M*8 Washers to attach the Flower Face Topper to the post.



Parrot Topper Installation

STEP: 1

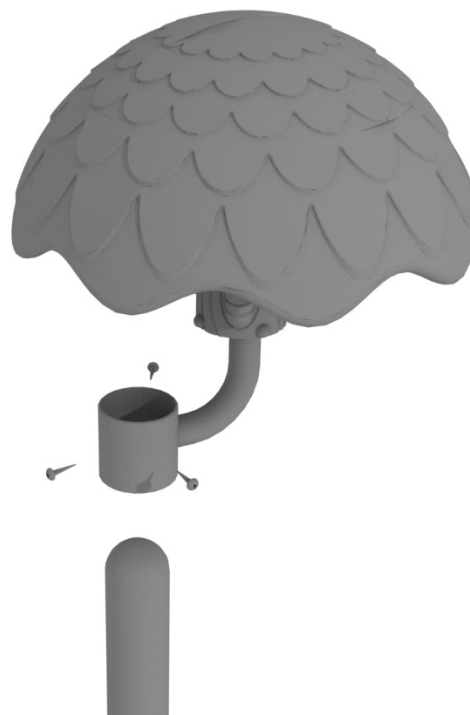
Detach half of the tube clamp connected to the Parrot Topper, and re-attach the clamp around the support post, as shown.



Tree Topper Installation

STEP: 1

Place the Tree Topper onto the desired post. Use three (3) M8*45 Set Screws to attach the Pine Tree Topper to the post.



Treehouse Club House Roof Installation

STEP: 1

Place the Club House roof on to the top of the posts of the appropriate deck.



STEP: 1

Install the Club House roof by using four (4) M4*50 Self Tapping screws, and four (4) M8 Washers.



Treehouse Gable Roof Installation

STEP: 1

Place the Gable Roof on to the top of the posts of the appropriate deck.



STEP: 1

Install the Gable Roof by using four (4) M4*50 Self Tapping screws, and four (4) M8 Washers.

