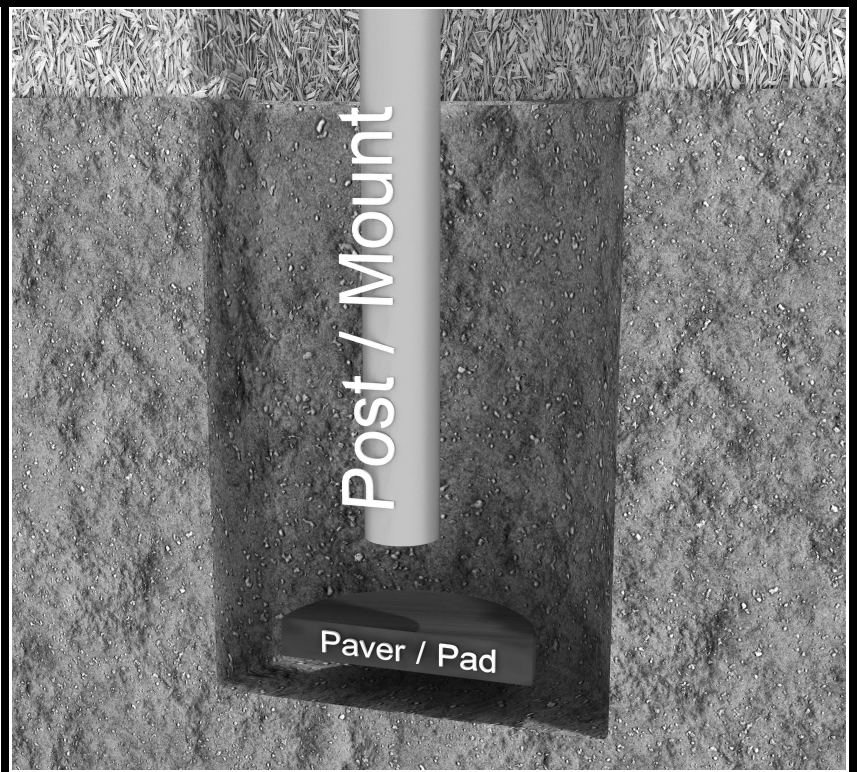


# Inground Post/Mount Installation

## STEP: 1

**DO NOT CEMENT POSTS/MOUNTS  
INTO PLACE UNTIL THE ENTIRE  
STRUCTURE IS ASSEMBLED.**

Refer to the General Installation  
guide footing size information and  
digging proper holes for the support  
posts/mounts.



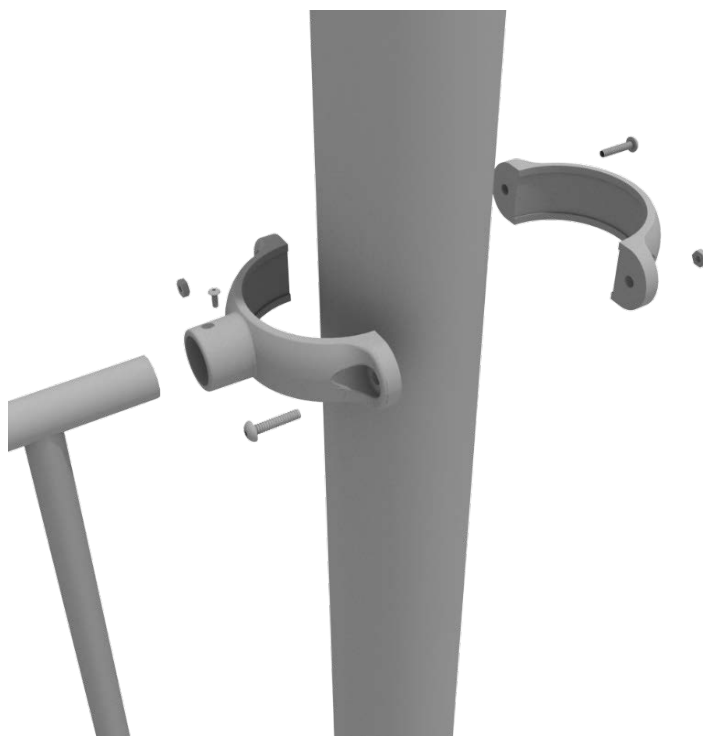
10859 E Washington St. Suite 200  
Indianapolis, IN 46229  
1-800-667-0097

Created By: Gage Brown  
Date: 04/26/2018

## 5.0-inch Clamp Installation Guide

### 5.0-inch Tube Clamp

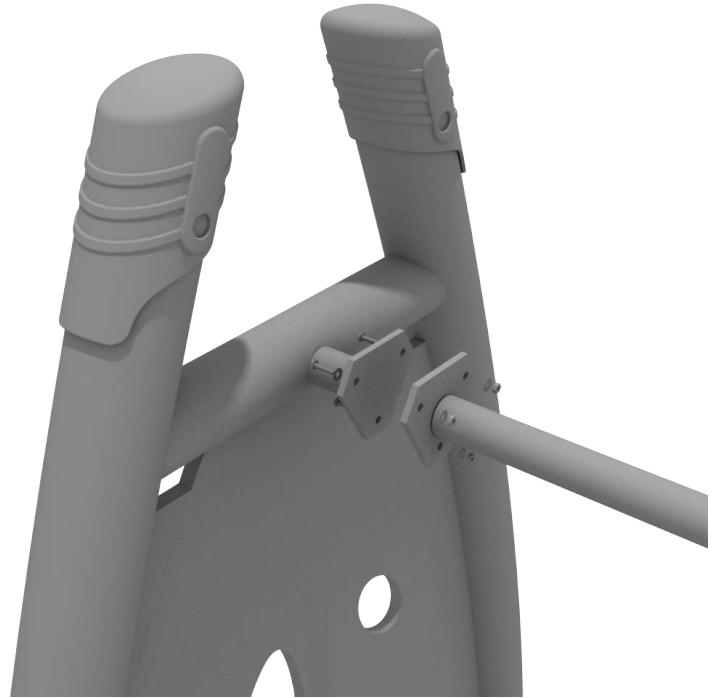
Insert Bar on Component into one half of the Tube Clamp and attach with M4\*25 Set Screw. Then, using the other half of the tube clamp and the hardware provided in the clamp hardware bag, attach the other half of the tube clamp around the post.



# Get Physical Series – Standard Attachment Point Installation

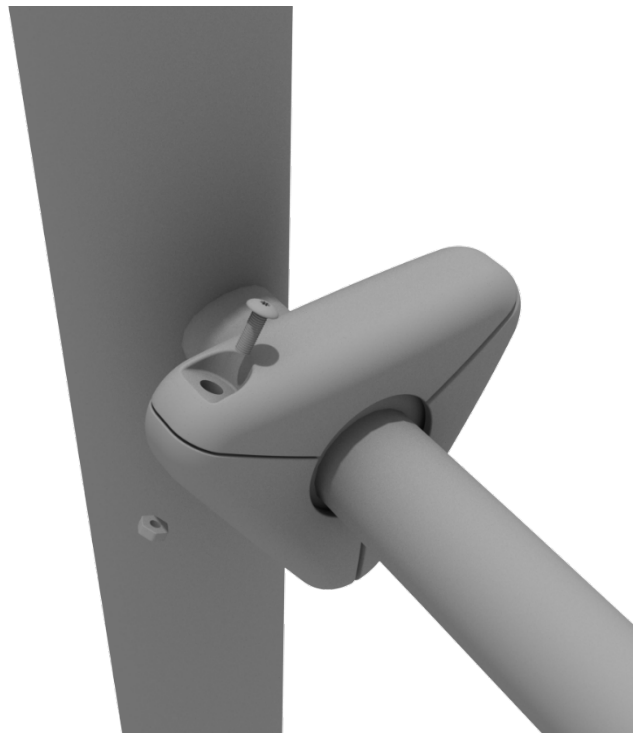
## STEP: 1

Most components of a Get Physical series structure attach using this standard attachment point. Use three (3) M10\*25 bolts, six (6) M10 washers, and three (3) M10 lock nuts.



## STEP: 2

Each of these attachment points has a rubber cover to protect the bolts. Attach the cover and secure using the pre-attached M8\*40 bolt and M8 lock nut.

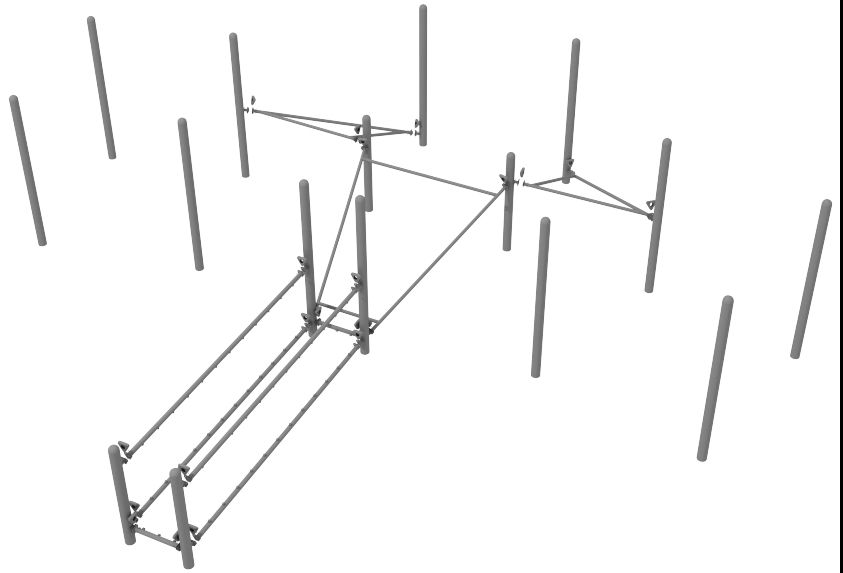


# Project Longshot Installation

## STEP: 1

Connect the Net Frames to the appropriate posts via the Standard Attachment Point.

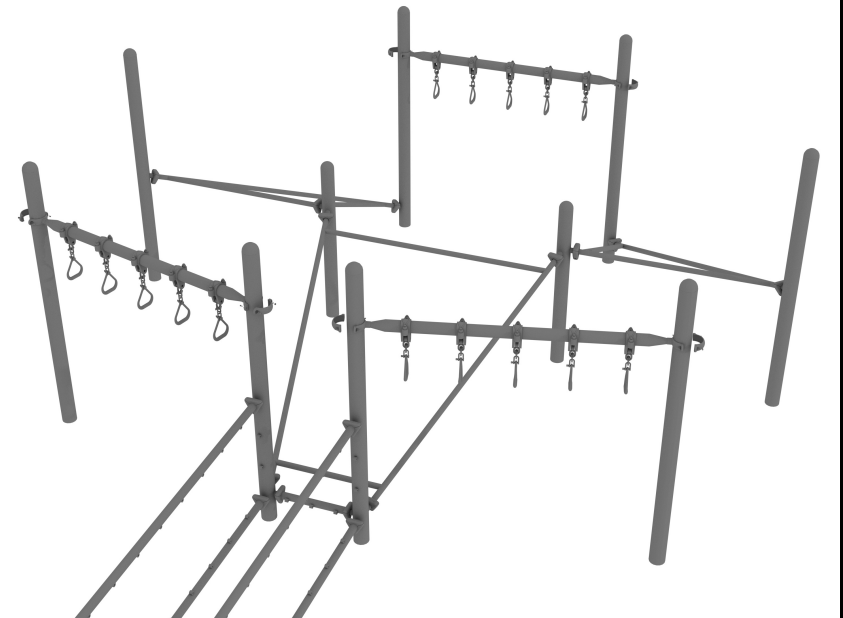
Refer to the Standard Attachment Point install section for more detailed information.



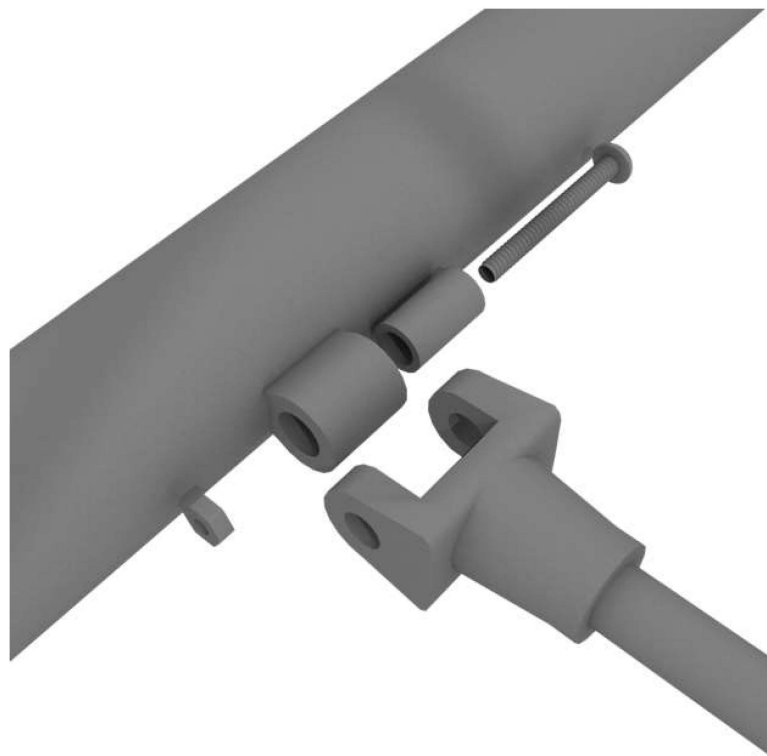
## Install STEP: 2

Connect the Overhead Swinging Rings to the appropriate posts via the 5.0-Inch Tube Clamps.

Refer to the 5.0-Inch Clamp install section for more detailed information.



Connect the Net to the outer frame using one (1) M8\*50 bolt, two (2) plastic spacers, and one (1) M8 lock nut for each attachment point.



## STEP: 4

Repeat the previous step of attaching the net climbers until completed.

