

PCR001 Craggy Pinnacle Install Guide

STEP: 1

Dig footings and place the Craggy Climber Tri-Connect climber. Do not cement until the entire climber is assembled.

Refer to the General Installation Instructions for more information on support post footings.



STEP: 2

Connect the Craggy Climber End Section to the Tri-Connect Climber using five (5) M8*65 bolts, five (5) M8 Washers, five (5) M10 Washers, and five (5) M10 Inner Hex nuts.

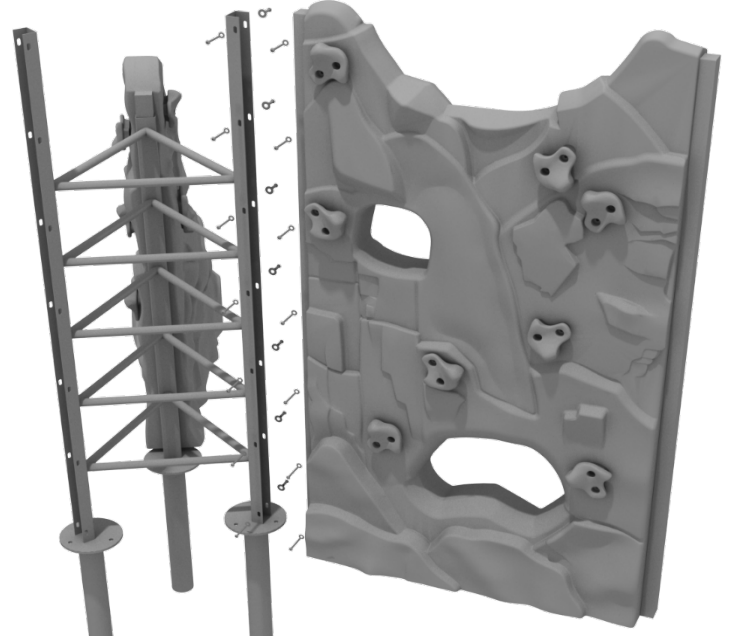
Refer to the General Installation Instructions for info about climber support post footings.



PCR001 Craggy Pinnacle Install Guide

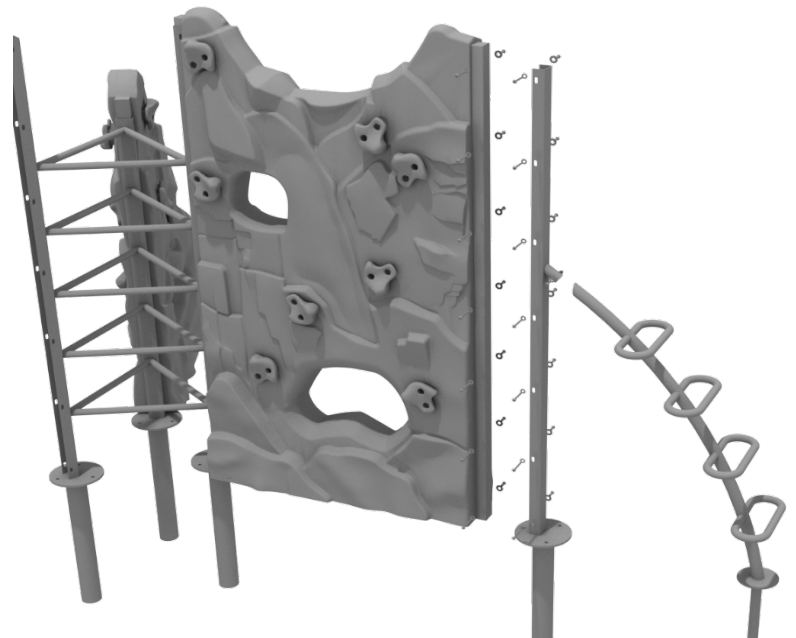
STEP: 3

Connect the Craggy Climber Straight Section to the Tri-Connect Climber using seven (7) M8*65 bolts, seven (7) M8 Washers, seven (7) M10 Washers, and seven (7) M10 Inner Hex nuts.



STEP: 4

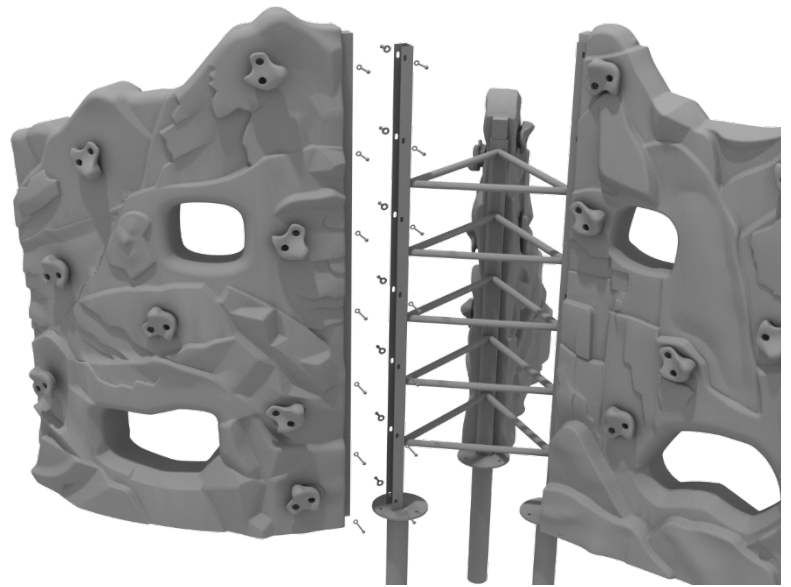
Connect the Craggy Arch Ring Climber Support post to the Craggy Climber Straight Section using seven (7) M8*65 bolts, seven (7) M8 Washers, seven (7) M10 Washers, and seven (7) M10 Inner Hex nuts. Then, Connect the Craggy Arch Ring Climber to the support post using one (1) M10*60 bolt and one (1) M10 lock nut.



PCR001 Craggy Pinnacle Install Guide

STEP: 5

Connect the Craggy Climber Curved Section to the Tri-Connect Climber using seven (7) M8*65 bolts, seven (7) M8 Washers, seven (7) M10 Washers, and seven (7) M10 Inner Hex nuts.



STEP: 6

Connect the Craggy Climber Arch Ladder Support post to the Craggy Climber Turn Section using five (5) M8*65 bolts, five (5) M8 Washers, five (5) M10 Washers, and five (5) M10 Inner Hex nuts. Then, connect the Craggy Climber Arch Ladder to the support post using two (2) M20*60 bolts, and two (2) M10 Lock Nuts.

Refer to the General Installation Guide for info on climber footings.

