

Inground Post/Mount Installation

STEP: 1

**DO NOT CEMENT POSTS/MOUNTS
INTO PLACE UNTIL THE ENTIRE
STRUCTURE IS ASSEMBLED.**

Refer to the General Installation
guide footing size information and
digging proper holes for the support
posts/mounts.



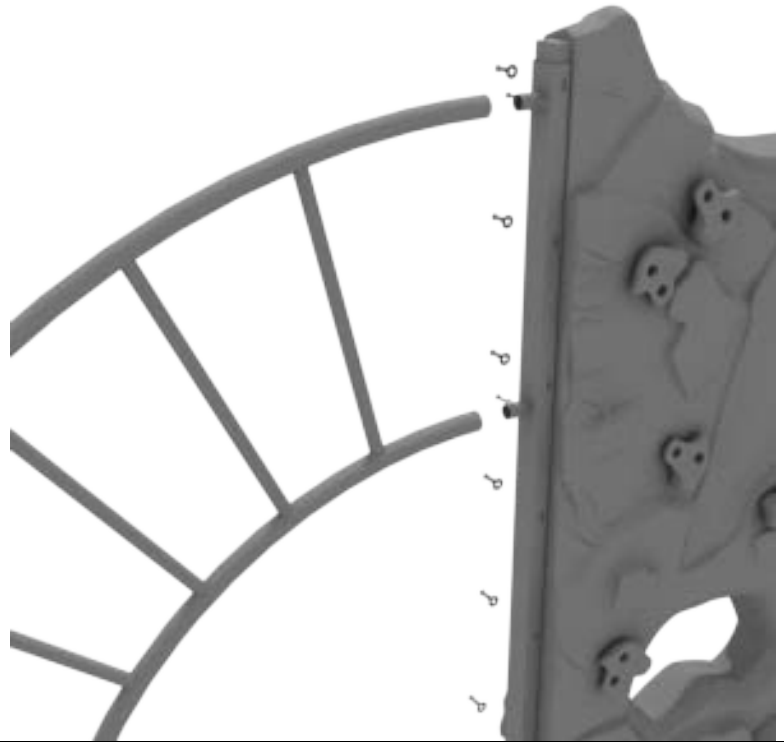
10859 E Washington St. Suite 200
Indianapolis, IN 46229
1-800-667-0097

Created By: Gage Brown
Date: 04/26/2018

Craggy Arch Ladder Connect Installation

See General Installation Guide regarding post footing information.

Mount the Bracket section to the end of the Craggy using seven (7) M8*60 inner hex screws, seven (7) M12 washers, and seven (7) M8 washers. Then, attach the Craggy Arch Ladder to the connection points on the bracket using two (2) M8 screws, two (2) M8 locking washers, two (2) M10 Loading Bolts, and two (2) M10 washers provided.



Step: 1

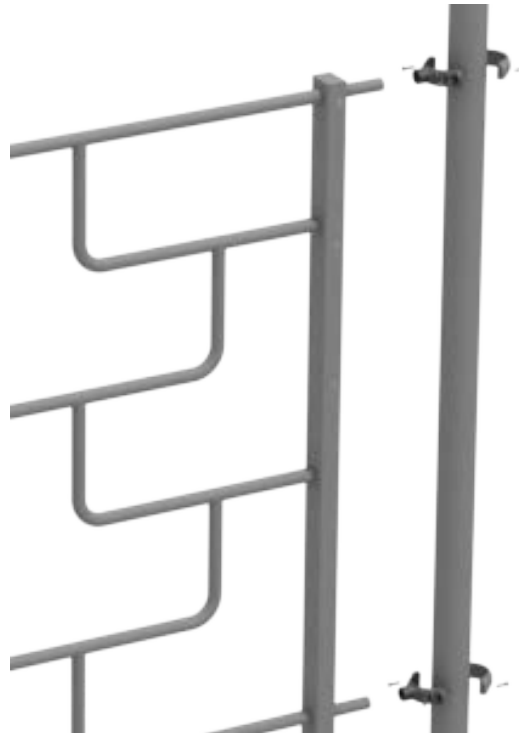
The Craggy PE Wall and Maze Rung Ladder attaches on both sides. Each connection point uses six (6) M12 bolts, six (6) M8*60 inner hex screws, six (12) M12 washers, and six (12) M8 washers.



Step: 2

Connect the attachment points of the Maze Run Ladder to the assigned clamps on the post.

Please refer to the Clamp Installation Guide for clamp to post assembly.

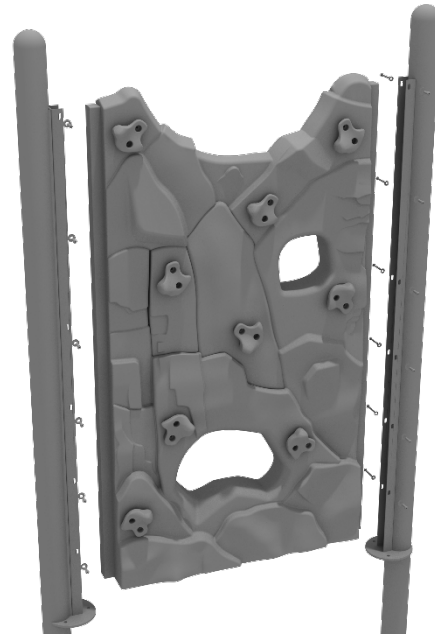


Craggy Climber Straight Section Installation

STEP: 1

Refer to the General Installation Instructions footing section for information on climber footings.

The Craggy Climber Straight Section attaches on both ends. Each connection point uses seven (7) M12 barrel nuts, seven (7) M8*60 bolts, seven (7) M12 washers, and seven (7) M8 washers.

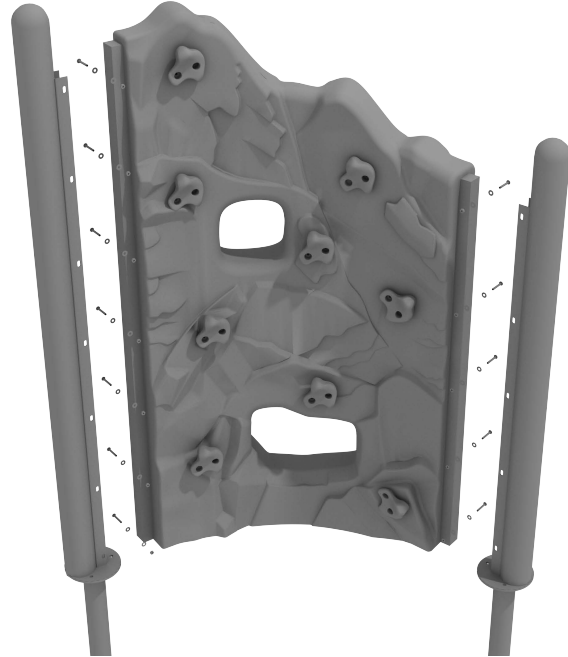


Craggy Climber Turn Section Installation

STEP: 1

Refer to the General Installation Instructions footing section for information on climber footings.

The Craggy Climber Turn Section attaches on both ends. The taller connection point uses seven (7) M12 barrel nuts, seven (7) M8*60 bolts, seven (7) M12 washers, and seven (7) M8 washers. The shorter connection point uses five (5) M12 barrel nuts, five (5) M8*60 bolts, five (5) M12 washers, and five (5) M8 washers.



Craggy Rock Climber End Installation

Connect the craggy end section to the curved craggy section using ten (10) M12 barrel nuts, ten (10) M8*60 bolts, ten (10) M12 washers, and ten (10) M8 washers.

