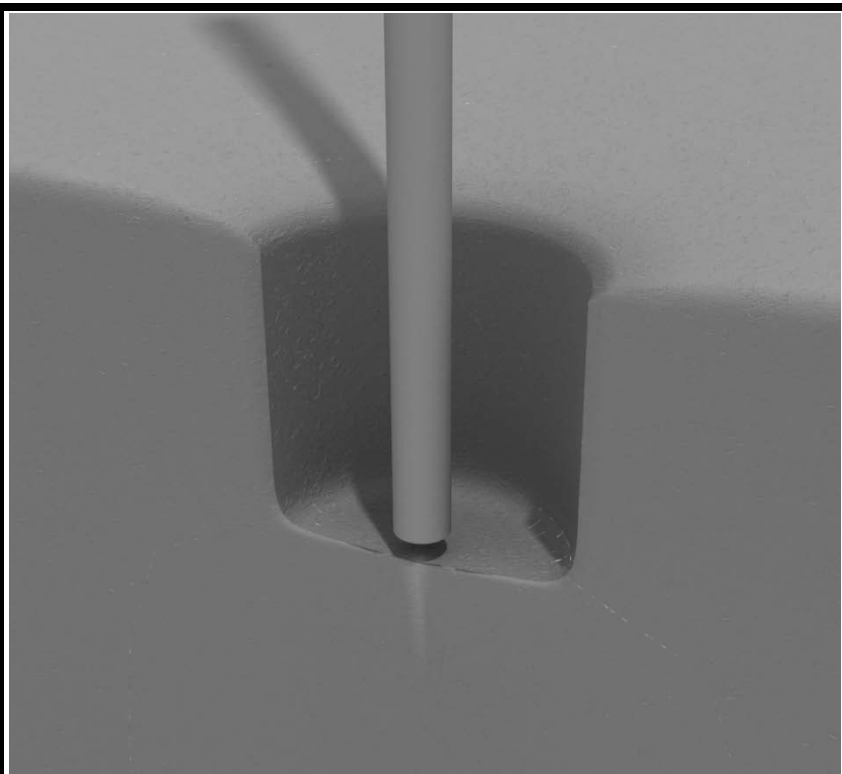


STEP: 1

**DO NOT CEMENT POSTS INTO PLACE
UNTIL THE ENTIRE STRUCTURE IS
ASSEMBLED.**

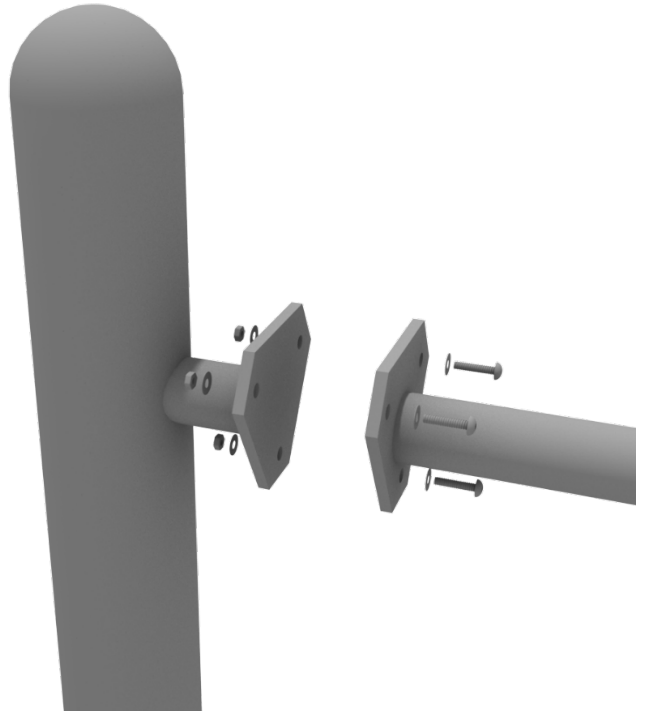
Refer to the General Installation
guide footing information and dig
proper holes for the support posts.



Get Physical Series – Standard Attachment Point Installation

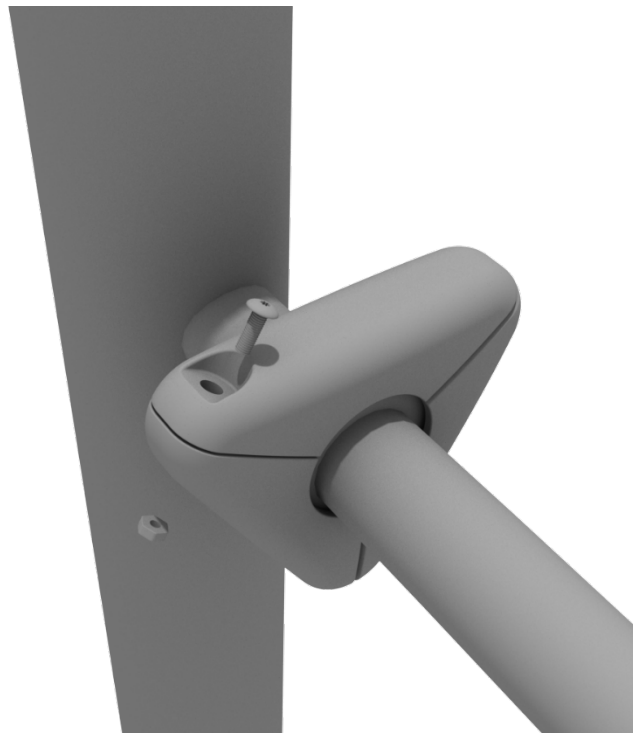
STEP: 1

Most components of a Get Physical series structure attach using this standard attachment point. Use three (3) M10*25 bolts, six (6) M10 washers, and three (3) M10 lock nuts.



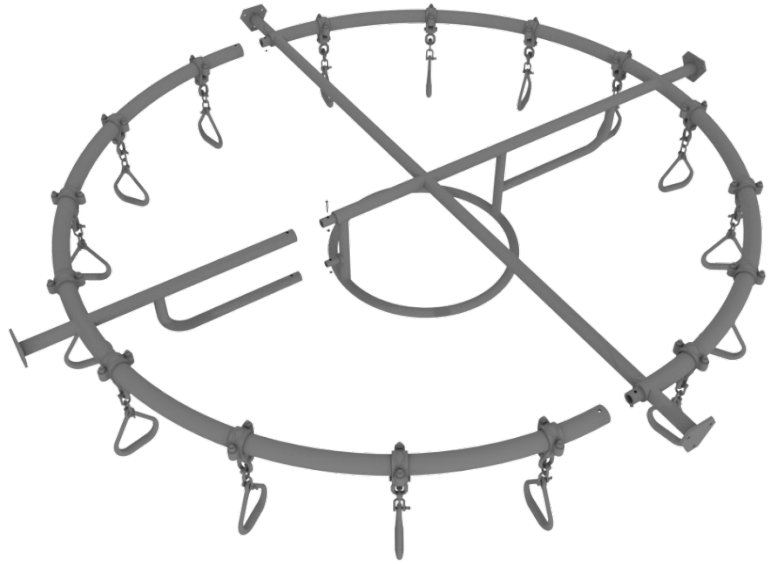
STEP: 2

Each of these attachment points has a rubber cover to protect the bolts. Attach the cover and secure using the pre-attached M8*40 bolt and M8 lock nut.



STEP: 1

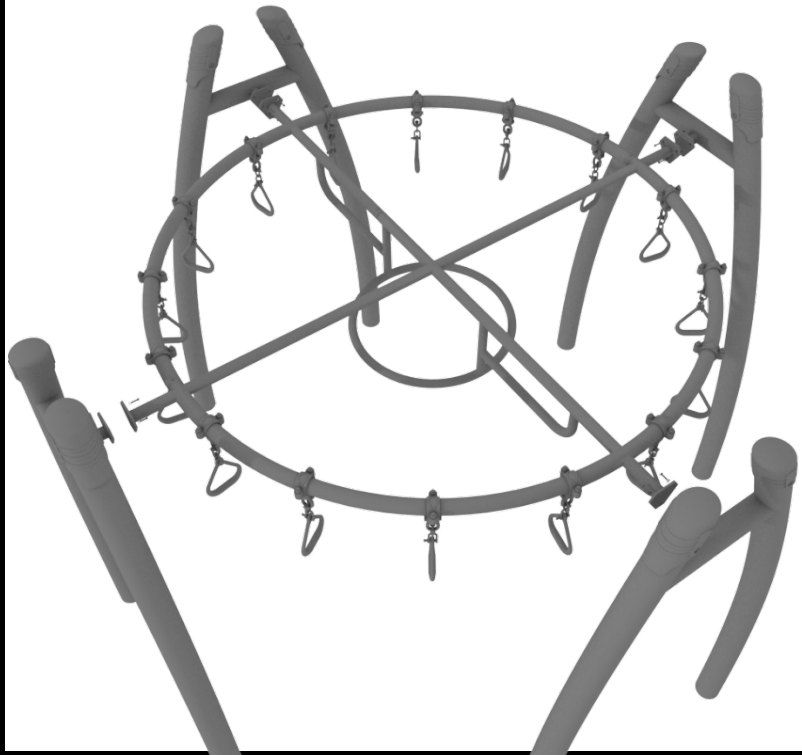
Connect the two halves of the Swinging Rings Hub together using four (4) M8*60 bolts and four (4) M8 lock nuts.



STEP: 1

The Singing Rings Hub will attach to the support posts via the Standard Attachment Points.

For detailed info see the Standard Attachment Point guide at the beginning of this document.



Get Physical-Rocker Bar Install

STEP: 1

Use three (3) M10*25 bolts, six (6) M10 washers, and three (3) M10 lock nuts for each connection point.

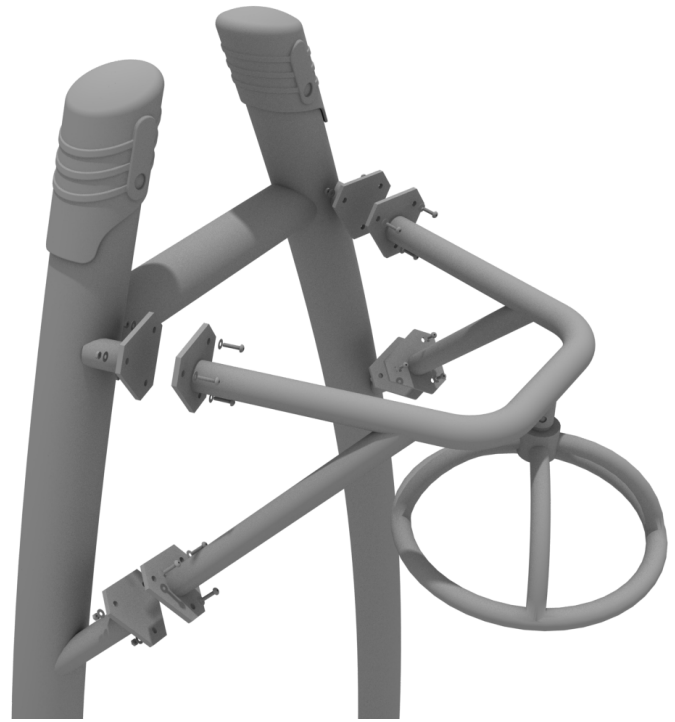


Get Physical Overhead Spinner Install

STEP: 1

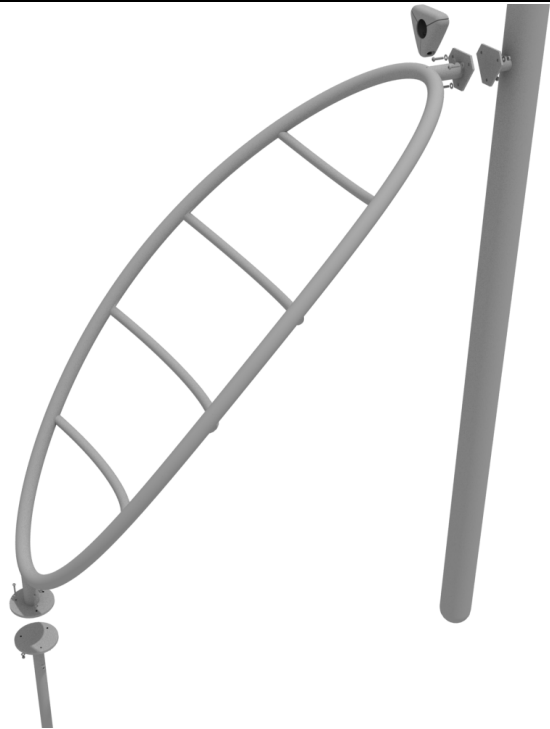
The Overhead spinner will attach to the support posts via the Standard Attachment Points.

For detailed info see the Standard Attachment Point guide at the beginning of this document.



Get Physical- Vertical Horizon Ladder Install

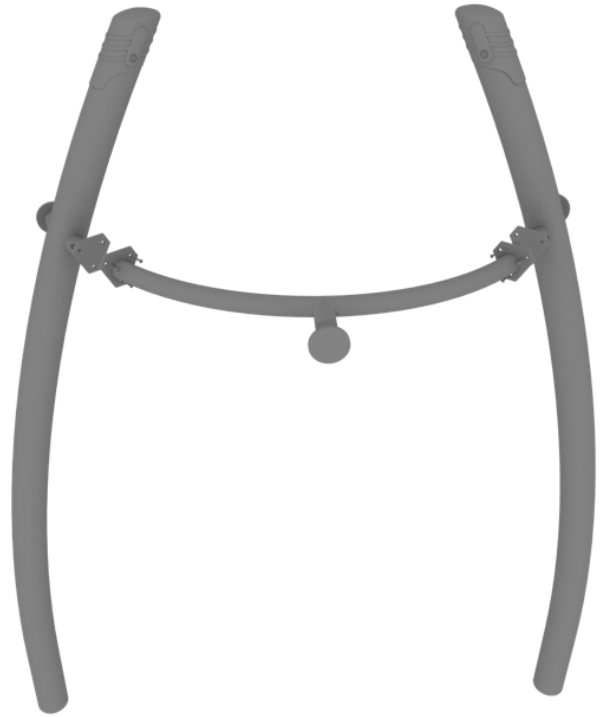
To connect the Vertical Horizon Ladder to the appropriate post via the Standard Attachment Point. Refer to the Standard Attachment Point install section for more detailed information. Dig suitable footings for the Vertical Horizon Climber. Please refer to the footing section for climbers in the General Installation Instructions document.



Get Physical Series - Tower of Rings Install

STEP: 1

To set up the Tower of Rings, first attach the top bars. Use three (3) M10*25 bolts, six (6) M10 washers, and three (3) M10 lock nuts for each attachment point.

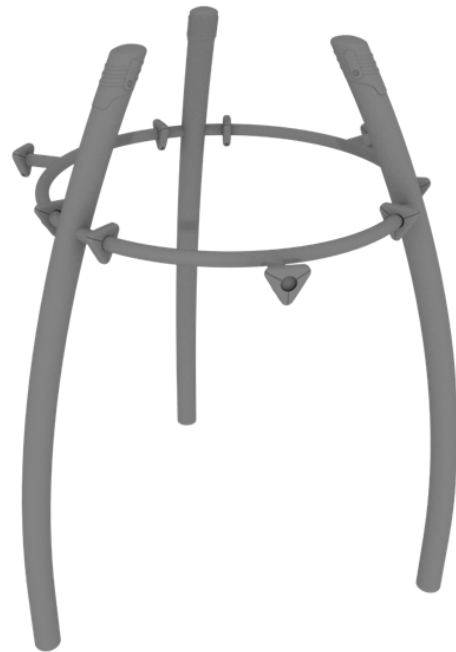


STEP: 2

Once the top is complete, install the rubber covers over each attachment point. Install the cover and secure using the pre-attached M8*40 bolt and M8 lock nut.

ATTENTION

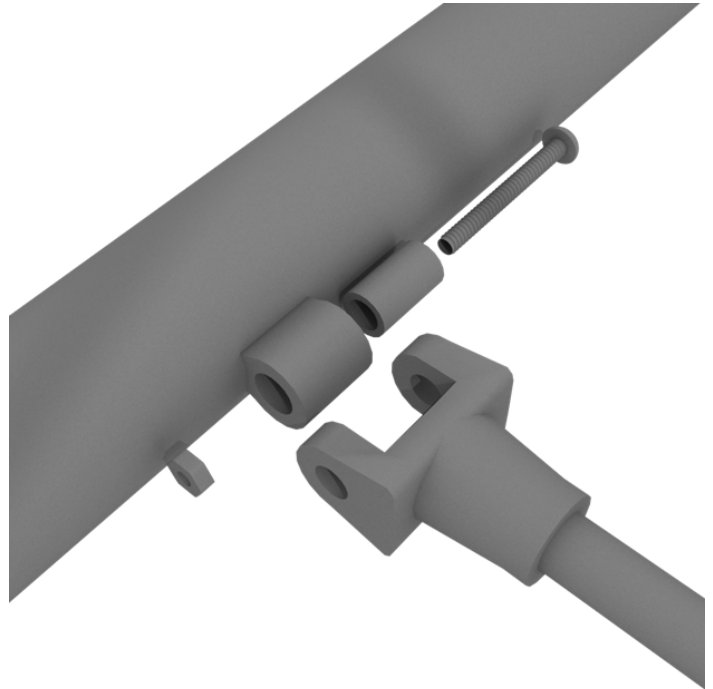
**Do not cement post until
Floating rings are installed on
structure.**



Get Physical Series - Tower of Rings Install

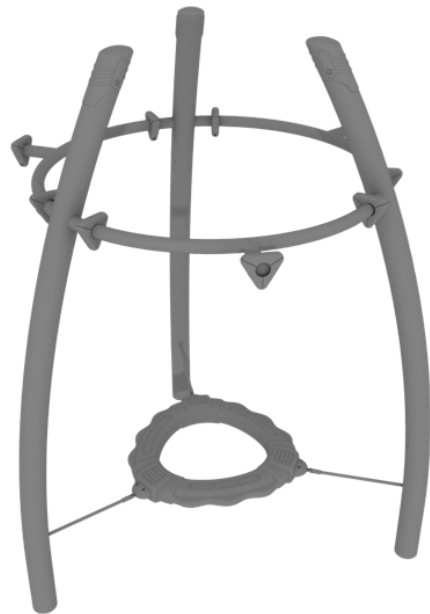
STEP: 3

To install the floating rings, connect the rings to the post using one (1) M8*50 bolt, two (2) plastic spacers, and one (1) M8 lock nut for each attachment point.



STEP: 4

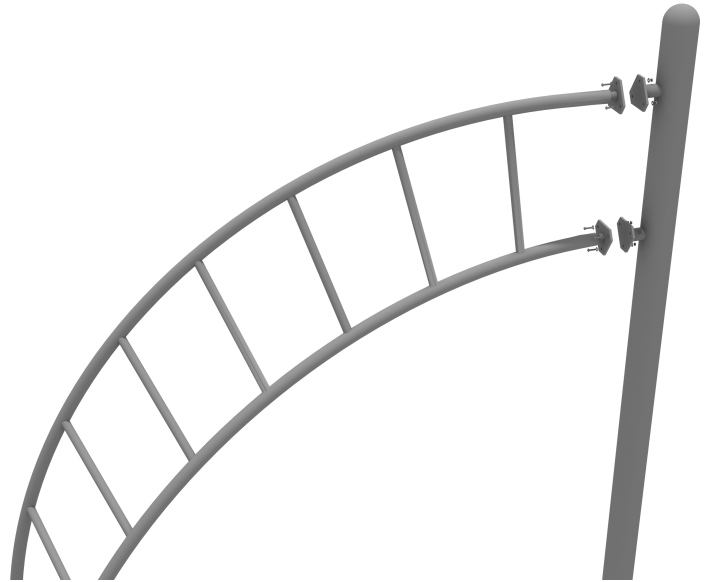
Repeat for the remaining floating rings.



Get Physical- Twisted Rung Ladder Install

To connect the Twisted Rung Ladder to the appropriate posts via the Standard Attachment Point. Refer to the Standard Attachment Point install section for more detailed information.

Dig suitable footings for the Twisted Rung Ladder. Please refer to the footing section for climbers in the General Installation Instructions document.



STEP: 1

Connect the Square Net Climber to the appropriate posts via the Standard Attachment Points. Please refer to the Standard Attachment Point Install section for more detailed information.



Created By: Derick H
Date: 10/26/2018