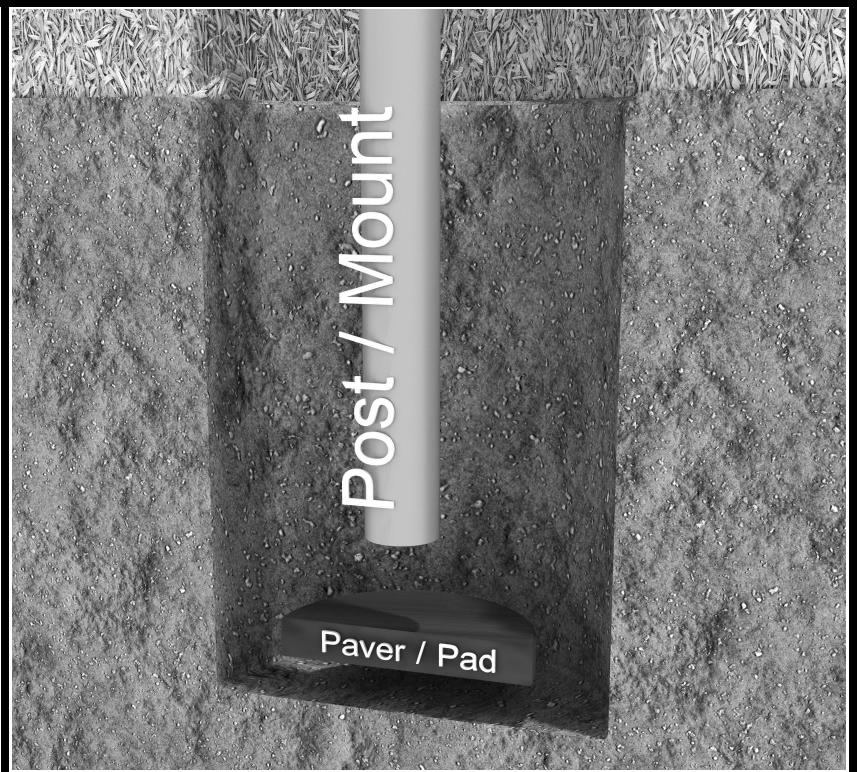


# Inground Post/Mount Installation

## STEP: 1

**DO NOT CEMENT POSTS/MOUNTS  
INTO PLACE UNTIL THE ENTIRE  
STRUCTURE IS ASSEMBLED.**

Refer to the General Installation  
guide footing size information and  
digging proper holes for the support  
posts/mounts.



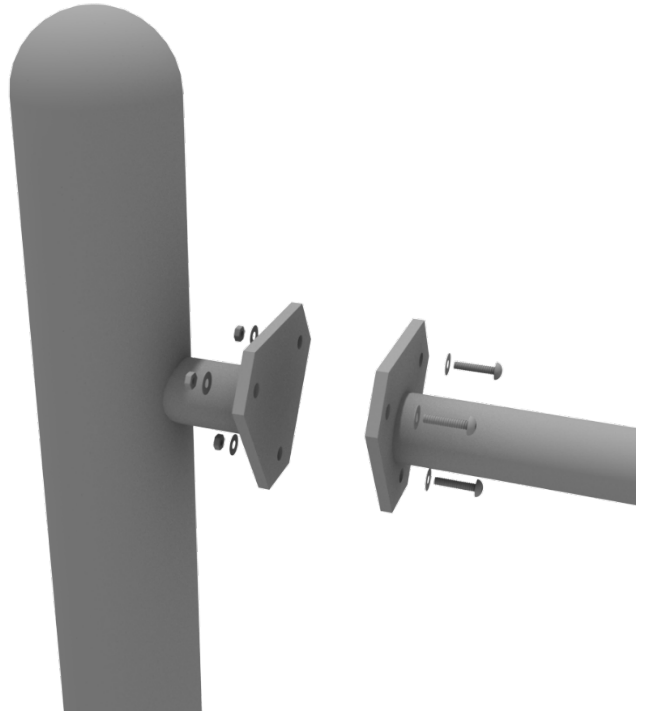
10859 E Washington St. Suite 200  
Indianapolis, IN 46229  
1-800-667-0097

Created By: Gage Brown  
Date: 04/26/2018

# Get Physical Series – Standard Attachment Point Installation

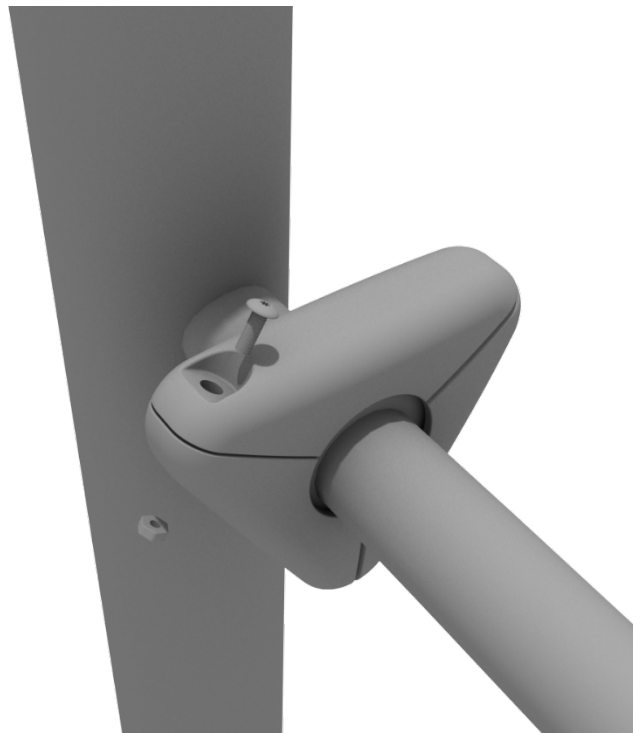
## STEP: 1

Most components of a Get Physical series structure attach using this standard attachment point. Use three (3) M10\*25 bolts, six (6) M10 washers, and three (3) M10 lock nuts.



## STEP: 2

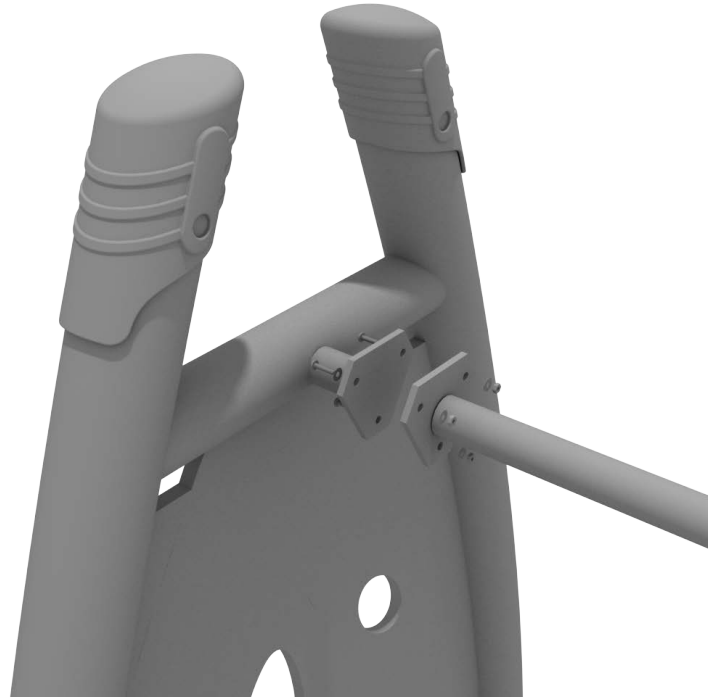
Each of these attachment points has a rubber cover to protect the bolts. Attach the cover and secure using the pre-attached M8\*40 bolt and M8 lock nut.



# Get Physical Series – Standard Attachment Point Installation

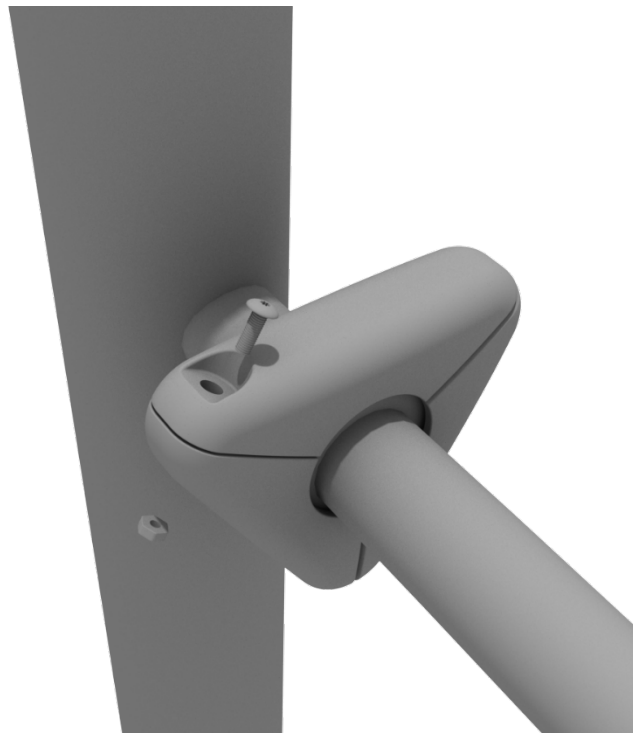
## STEP: 1

Most components of a Get Physical series structure attach using this standard attachment point. Use three (3) M10\*25 bolts, six (6) M10 washers, and three (3) M10 lock nuts.



## STEP: 2

Each of these attachment points has a rubber cover to protect the bolts. Attach the cover and secure using the pre-attached M8\*40 bolt and M8 lock nut.



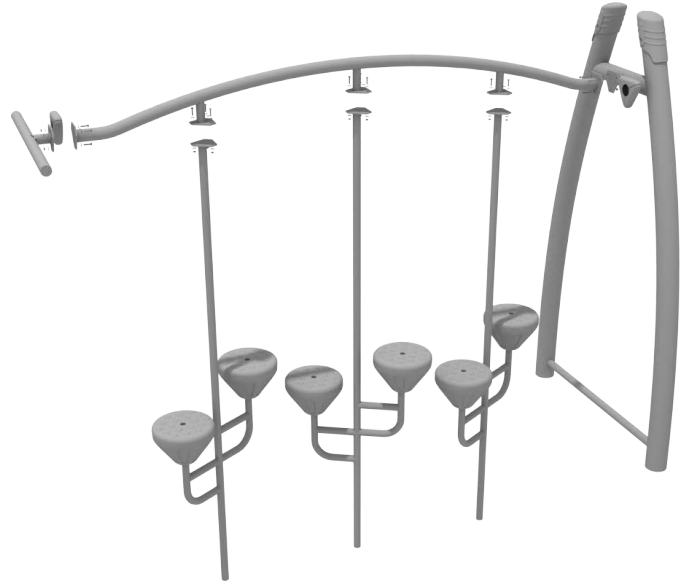
# Get Physical Series – Arched Double Pebble Bridge

## STEP: 1

Connect the Arched Double Pebble Bridge top rail to the appropriate standard attachment point with the provided hardware.

Refer to the Standard Attachment Point install section for more detailed information.

Dig suitable footings for each of the pebble step Supports. Please refer to the footing section for climbers in the General Installation Instructions document.

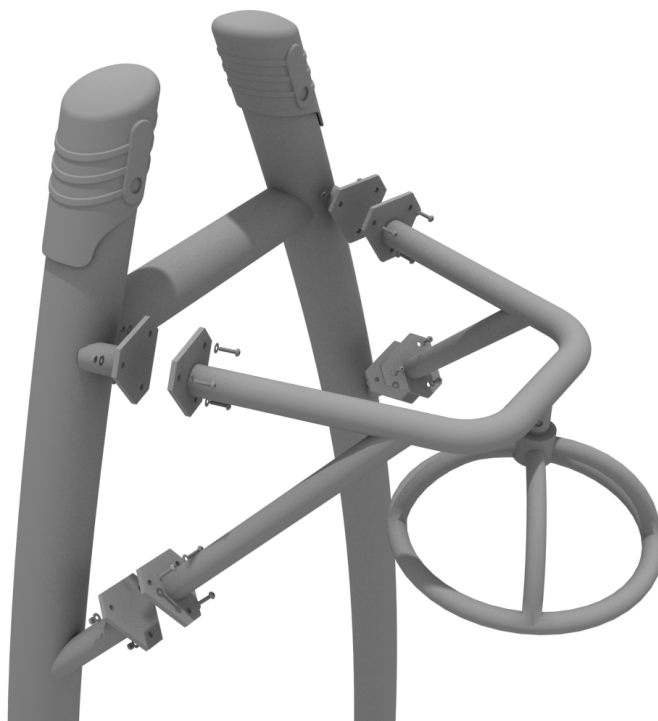


# Get Physical Overhead Spinner Install

## STEP: 1

The Overhead spinner will attach to the support posts via the Standard Attachment Points.

For detailed info see the Standard Attachment Point guide at the beginning of this document.



# Get Physical Series - Tower of Rings Install

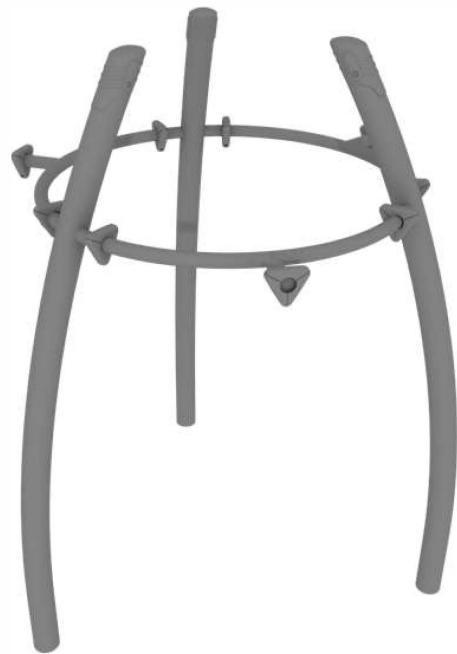
## STEP: 1

To set up the Tower of Rings, first attach the top bars. Use three (3) M10\*25 bolts, six (6) M10 washers, and three (3) M10 lock nuts for each attachment point.



## STEP: 2

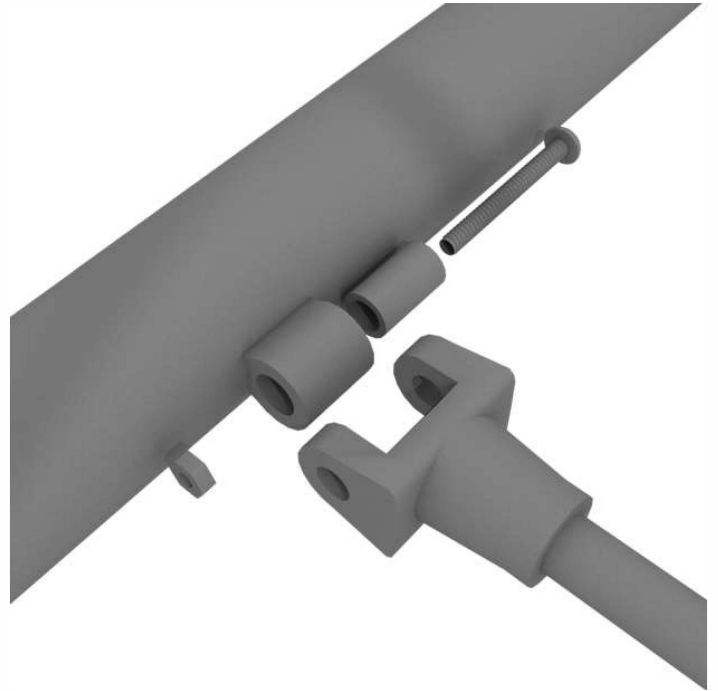
**Do not cement post until  
Floating rings are installed on  
structure.**



# Get Physical Series - Tower of Rings Install

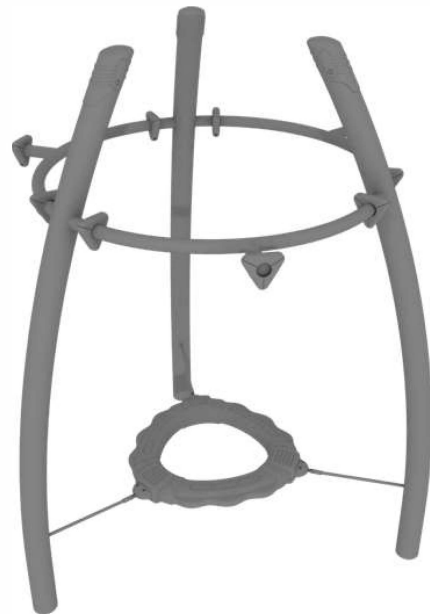
## STEP: 3

To install the floating rings, connect the rings to the post using one (1) M8\*50 bolt, two (2) plastic spacers, and one (1) M8 lock nut for each attachment point.



## STEP: 4

Repeat for the remaining floating rings.

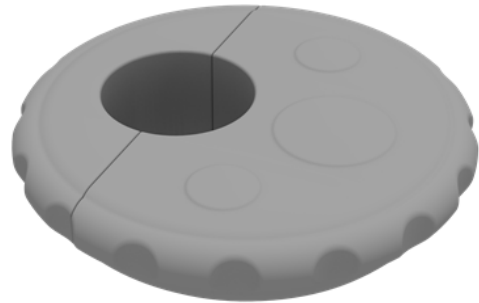


Connect the Square Net Climber to the appropriate posts via the Standard Attachment Points. Please refer to the Standard Attachment Point Install section for more detailed information.

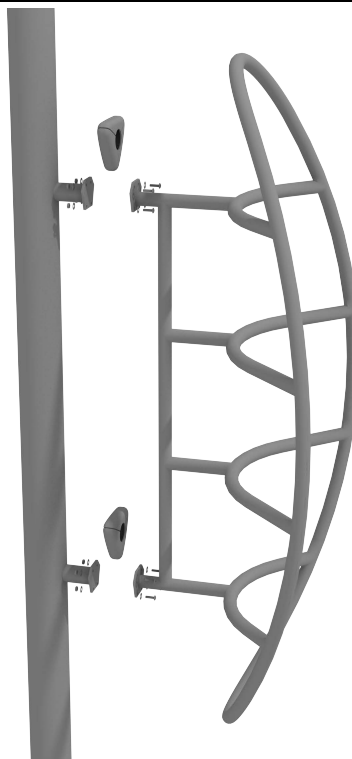


# Plastic Step Install

Loosen pre-attached hardware and install on designated post and re-tighten the M10\*50 bolts.



To connect any Get Physical Arch posts together. Refer to the Standard Attachment Point install section for more detailed information.



## Get Physical Series – Trapezoid Loop Ladder Install

### STEP: 1

Connect the Trapezoid Loop Ladder to the appropriate posts via the Standard Attachment Point.

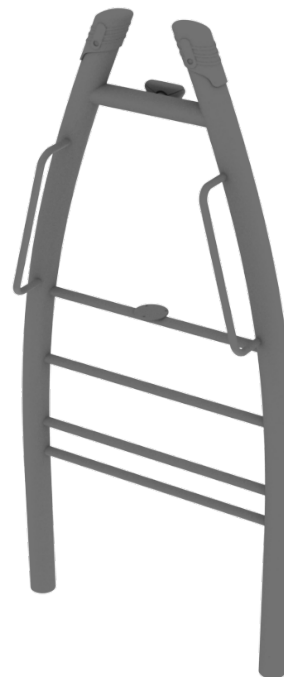
Refer to the Standard Attachment Point install section for more detailed information.



# Saddle Slide Install

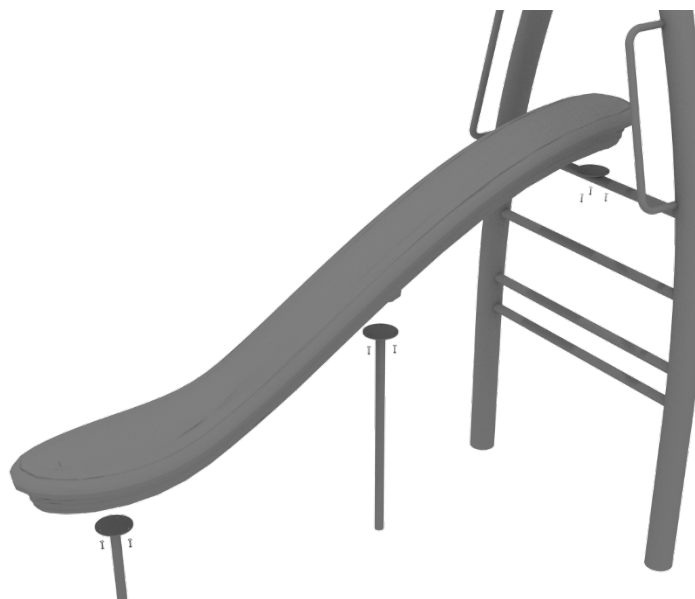
## STEP: 1

Refer to the General Installation guide footing information and dig proper holes for the support posts.



## STEP: 2

See general installation guide regarding footing information for the slide end mount. Using two (2) M8\*20, two (M8) spring washers. And two (2) M8 washers, attach the slide to the slide support post. Attach the slide to the support using two (2) M8\*20, two (M8) spring washers. And two (2) M8 washers.



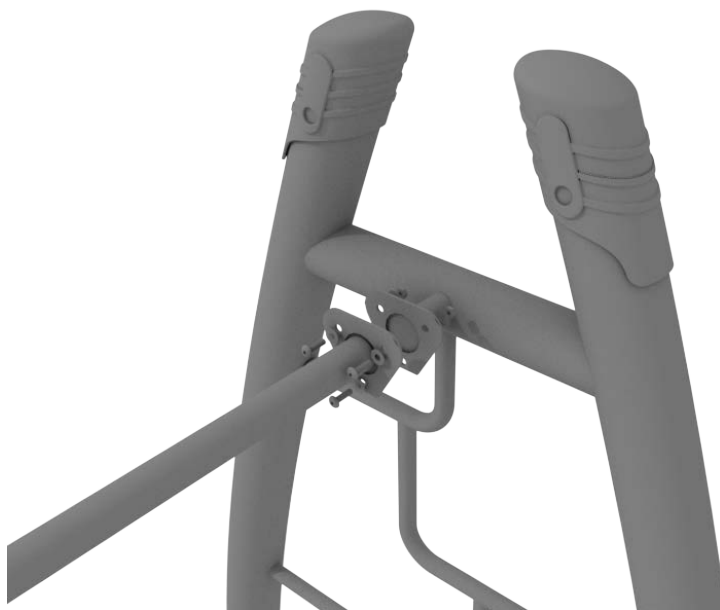
# Get Physical Series – Maze Rung Vertical

## Ladder Install

### STEP: 1



Attach using this standard attachment point. Use three (3) M10\*25 bolts, six (6) M10 washers, and three (3) M10 lock nuts.



### STEP: 2

Each of these attachment points has a rubber cover to protect the bolts. Attach the cover and secure using the pre-attached M8\*40 bolt and M8 lock nut.

