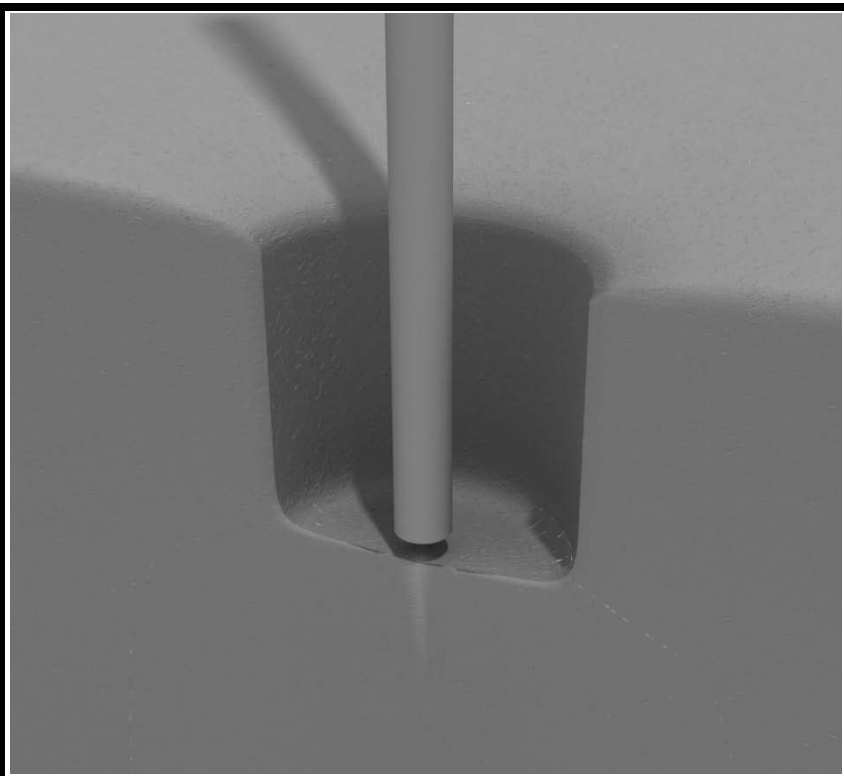


## STEP: 1

**DO NOT CEMENT POSTS INTO PLACE  
UNTIL THE ENTIRE STRUCTURE IS  
ASSEMBLED.**

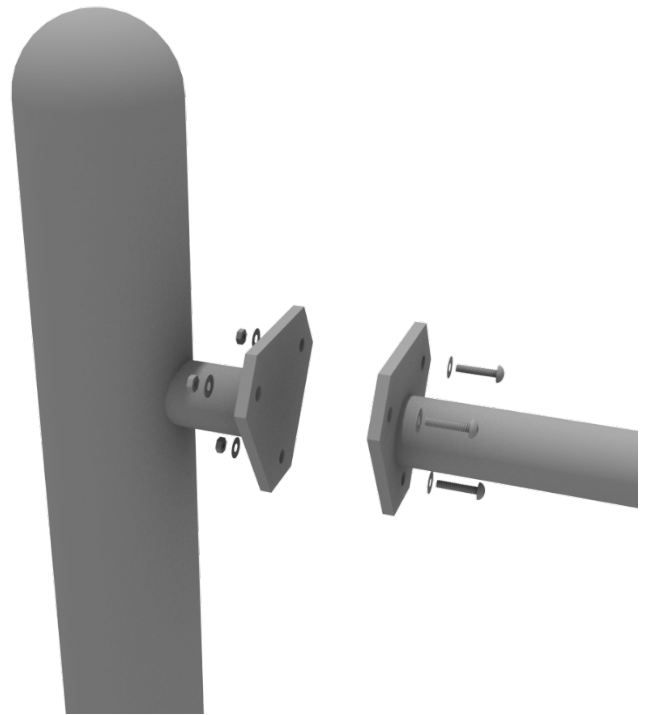
Refer to the General Installation  
guide footing information and dig  
proper holes for the support posts.



# Get Physical Series – Standard Attachment Point Installation

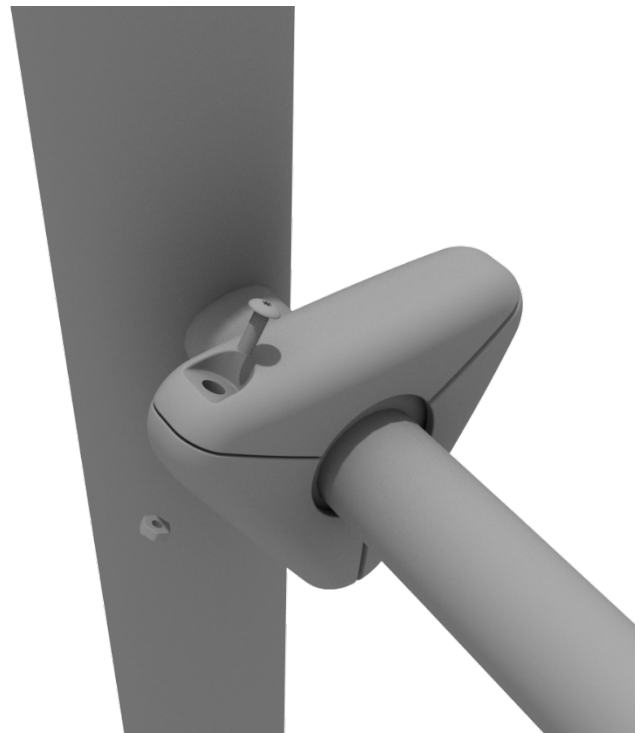
## STEP: 1

Most components of a Get Physical series structure attach using this standard attachment point. Use three (3) M10\*25 bolts, six (6) M10 washers, and three (3) M10 lock nuts.



## STEP: 2

Each of these attachment points has a rubber cover to protect the bolts. Attach the cover and secure using the pre-attached M8\*40 bolt and M8 lock nut.



## STEP: 1

Connect the 3-Wheel Overhead Spinner to the appropriate posts via the Standard Attachment Point.

Refer to the Standard Attachment Point install section for more detailed information.

