

# Inground Post/Mount Installation

## STEP: 1

**DO NOT CEMENT POSTS/MOUNTS  
INTO PLACE UNTIL THE ENTIRE  
STRUCTURE IS ASSEMBLED.**

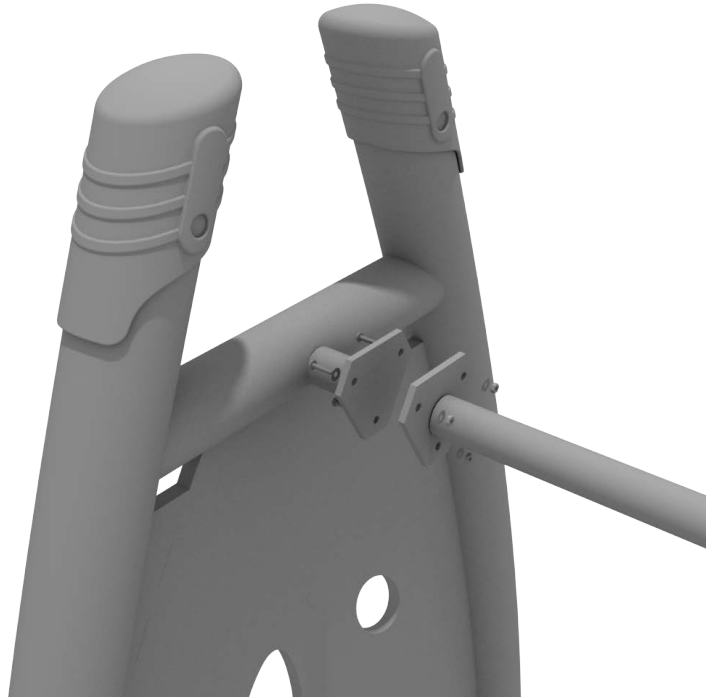
Refer to the General Installation  
guide footing size information and  
digging proper holes for the support  
posts/mounts.



## Get Physical Series – Standard Attachment Point Installation

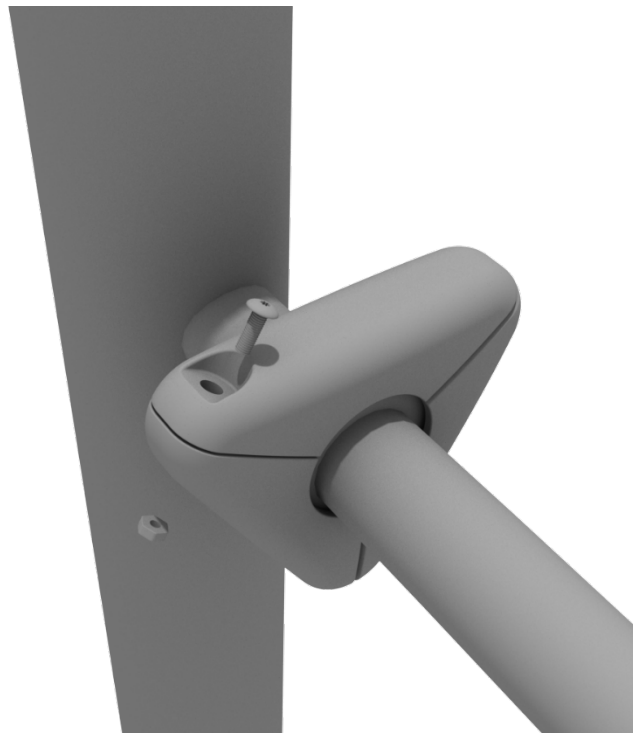
### STEP: 1

Most components of a Get Physical series structure attach using this standard attachment point. Use three (3) M10\*25 bolts, six (6) M10 washers, and three (3) M10 lock nuts.



### STEP: 2

Each of these attachment points has a rubber cover to protect the bolts. Attach the cover and secure using the pre-attached M8\*40 bolt and M8 lock nut.



# Chain Climber Install

Connect the Chain Climber top rail to the appropriate posts via the Standard Attachment Point. Connect chain to top rail by using one (1) M10\*55 bolt, two (2) M10 washers, one (1) spacer and one one (1) M10 lock nut. Connect chain climber to ground mount by loosening attached hardware on chain. Please refer to the footing section for climbers in the General Installation Instructions document.

