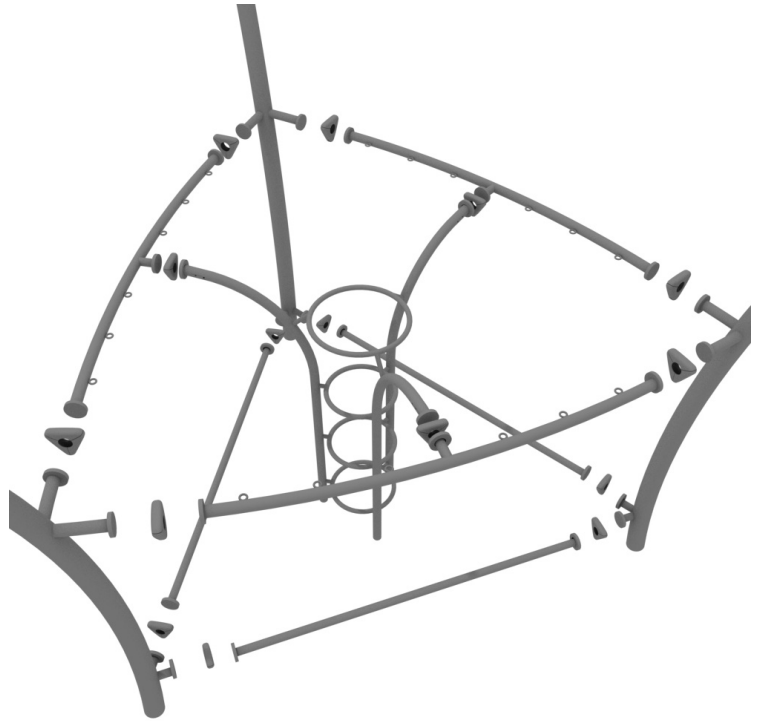


Combination Manhole Climber with Side Nets Install

STEP: 1

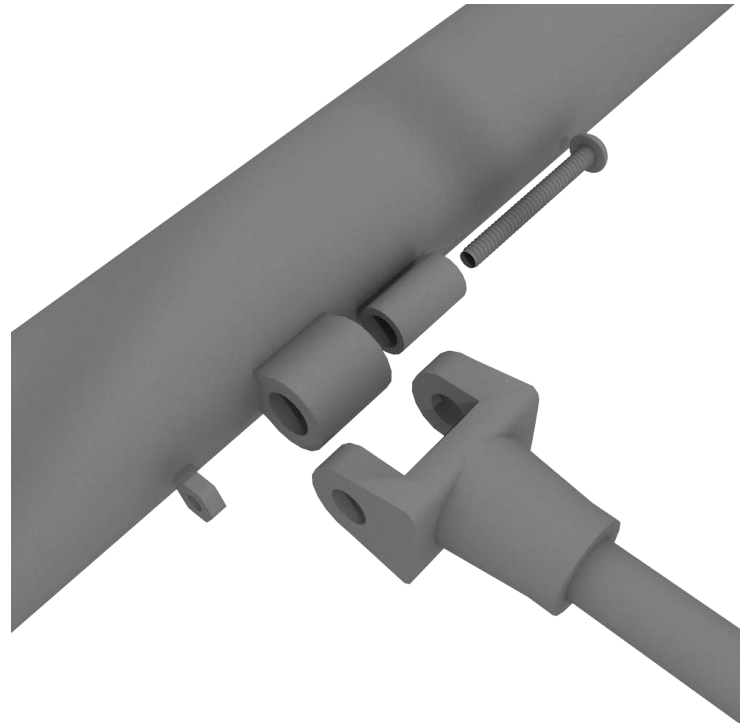
The Combination Manhole Climber will attach to the support posts via the Standard Attachment Points.

For detailed info see the Standard Attachment Point guide at the beginning of this document.



STEP: 2

Connect the nets to the outer frame using one (1) M8*50 bolt, one (1) plastic spacer, and one (1) M8 lock nut for each attachment point.



Combination Manhole Climber with Side Nets Install

STEP: 3

Repeat step 2 until all attachment points are connected.

