

STEP: 1

**DO NOT CEMENT POSTS INTO PLACE
UNTIL THE ENTIRE STRUCTURE IS
ASSEMBLED.**

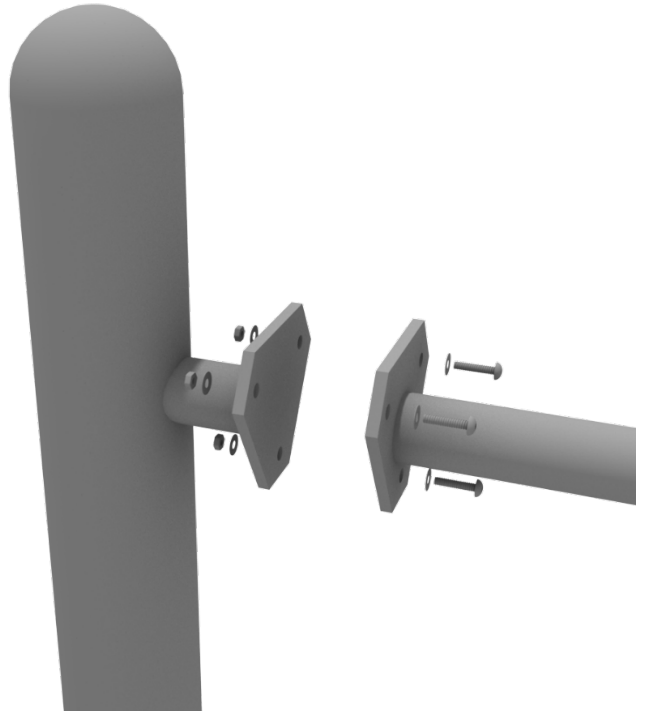
Refer to the General Installation
guide footing information and dig
proper holes for the support posts.



Get Physical Series – Standard Attachment Point Installation

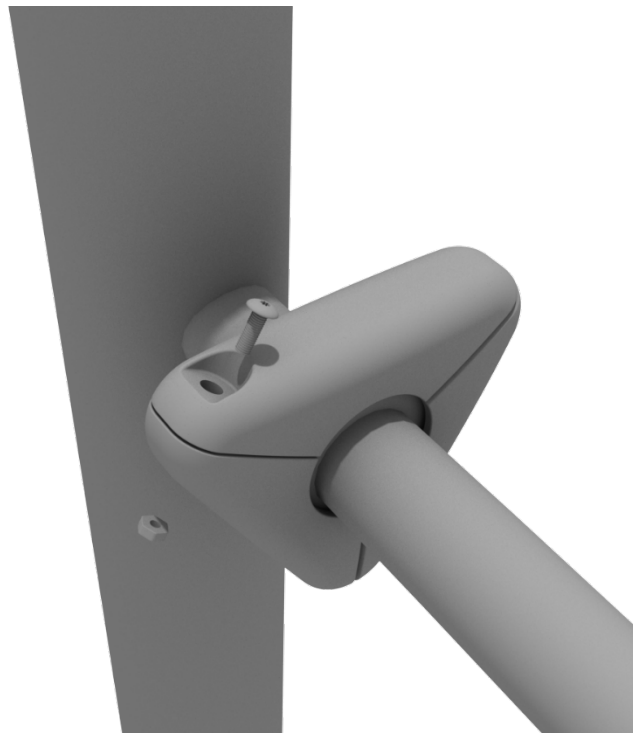
STEP: 1

Most components of a Get Physical series structure attach using this standard attachment point. Use three (3) M10*25 bolts, six (6) M10 washers, and three (3) M10 lock nuts.



STEP: 2

Each of these attachment points has a rubber cover to protect the bolts. Attach the cover and secure using the pre-attached M8*40 bolt and M8 lock nut.



Double Tilted Lilly Pad Bridge Install

STEP: 1

Connect the two Arched top rails to the end posts via the Standard Get Physical Attachment points.

Refer to the Standard Attachment Point guide for more details on how to connect.



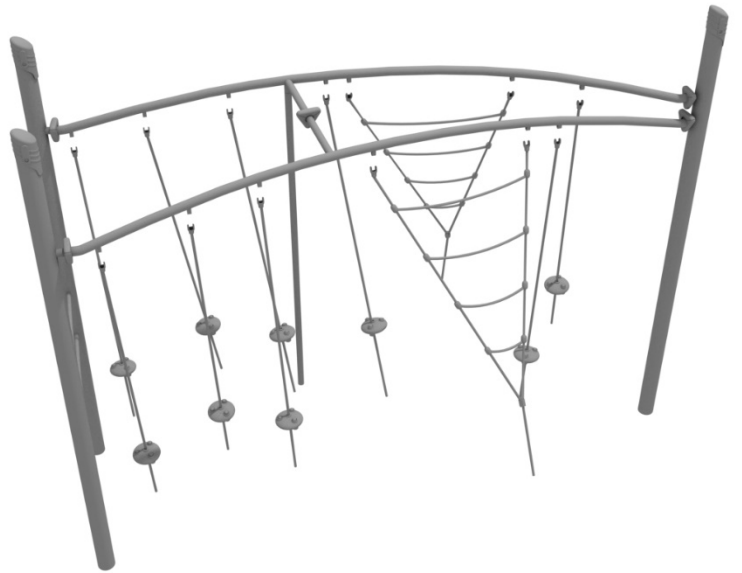
STEP: 2

Attach the support post to the top rail by using one (1) M8*50 bolt, two (2) M8 Washers, and one (1) M8 lock nut.



STEP: 3

Align the Net components with the appropriate attachment points on the top rails.



STEP: 4

Connect the net pieces to the top rail components using one (1) M8*50 bolt, one (1) plastic spacer, and one (1) M8 lock nut for each attachment point.

