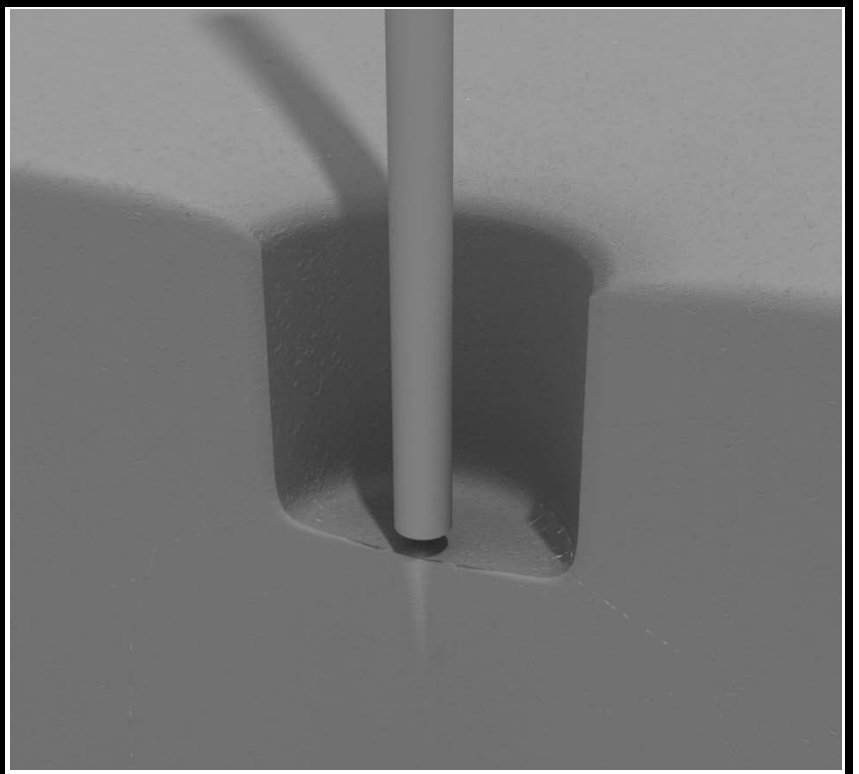


STEP: 1

**DO NOT CEMENT POSTS INTO PLACE
UNTIL THE ENTIRE STRUCTURE IS
ASSEMBLED.**

Refer to the General Installation
guide footing information and dig
proper holes for the support posts.

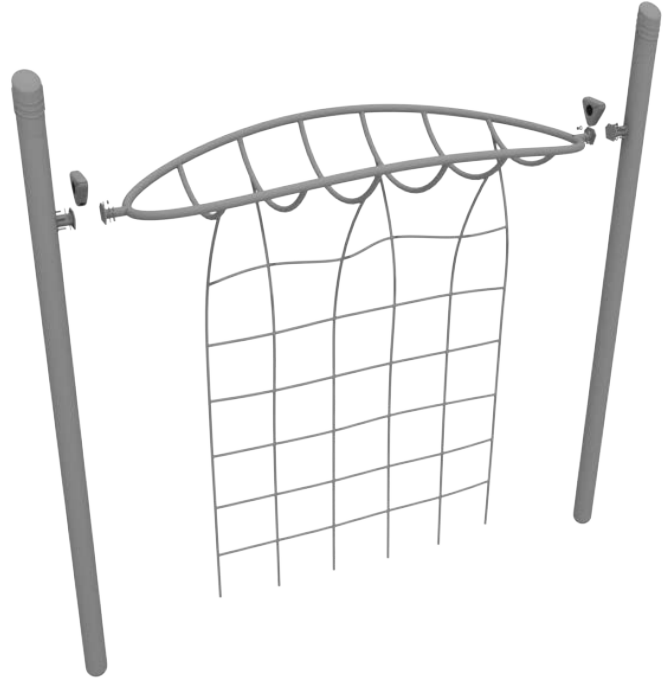


Get Physical Series – Overhead Horizon Net Climber

Single Post Install STEP: 1

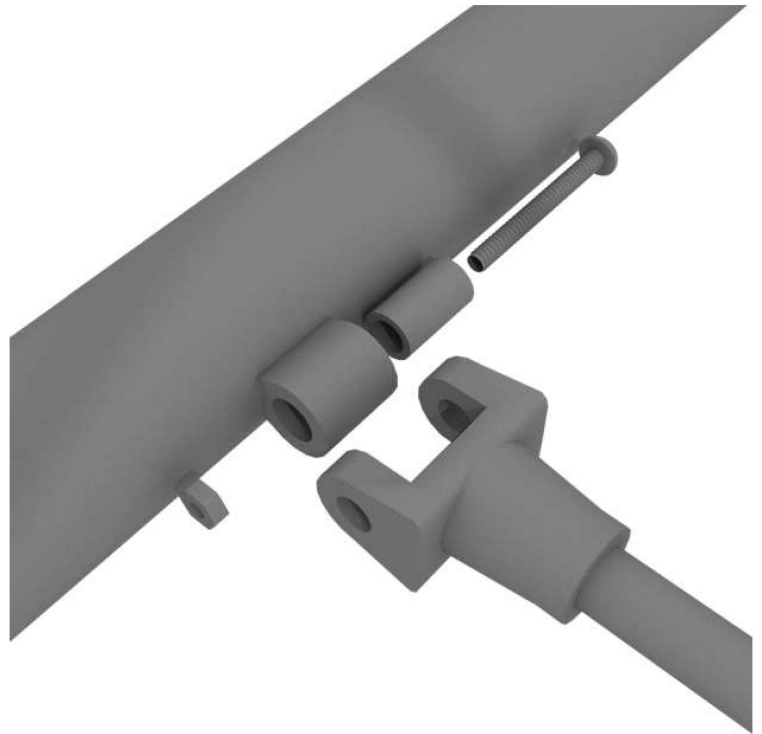
Connect the Overhead Horizon Climber to the appropriate posts via the Standard Attachment Point.

Refer to the Standard Attachment Point install section for more detailed information.



Install STEP: 2

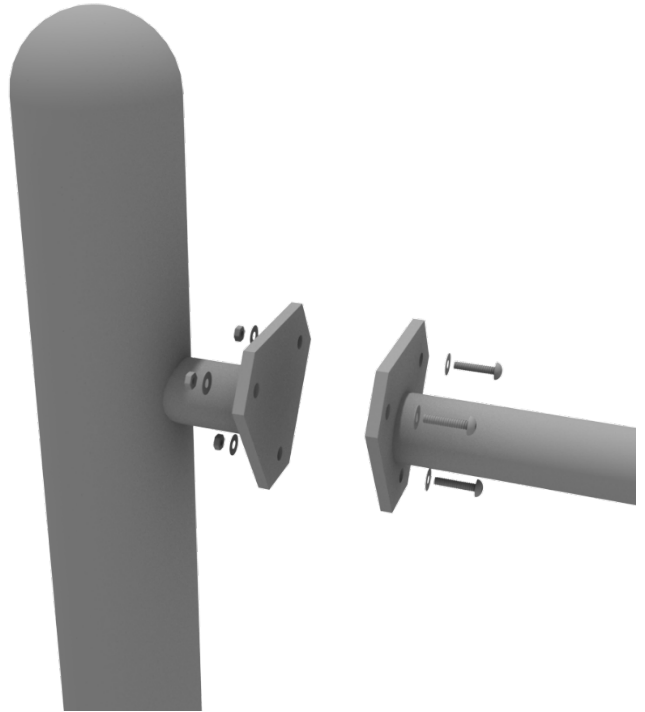
Connect the Net to the outer frame using one (1) M8*50 bolt, two (2) plastic spacers, and one (1) M8 lock nut for each attachment point.



Get Physical Series – Standard Attachment Point Installation

STEP: 1

Most components of a Get Physical series structure attach using this standard attachment point. Use three (3) M10*25 bolts, six (6) M10 washers, and three (3) M10 lock nuts.



STEP: 2

Each of these attachment points has a rubber cover to protect the bolts. Attach the cover and secure using the pre-attached M8*40 bolt and M8 lock nut.

