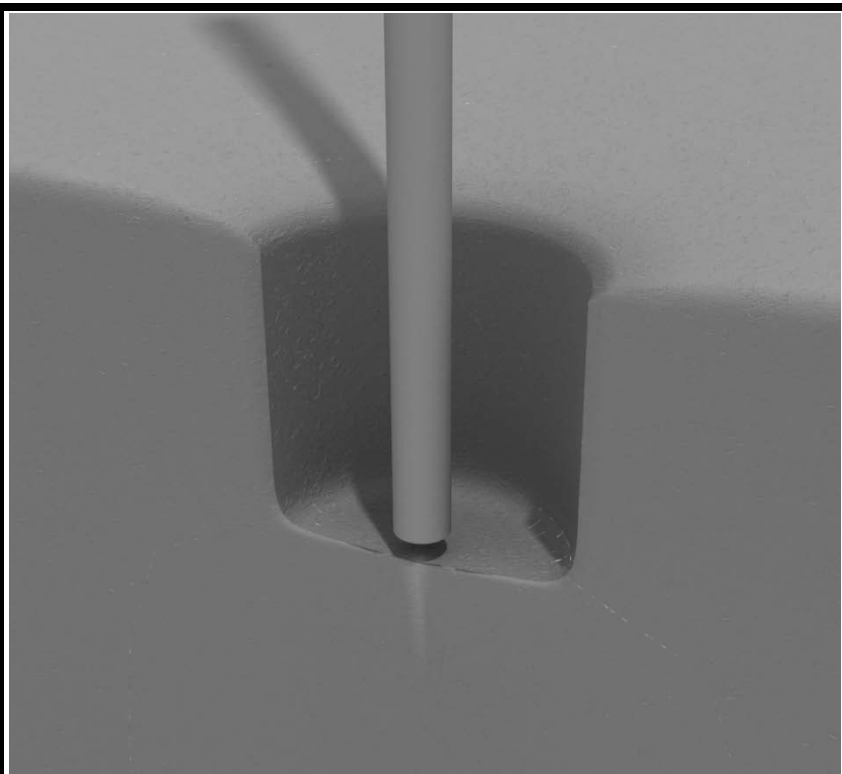


## STEP: 1

**DO NOT CEMENT POSTS INTO PLACE  
UNTIL THE ENTIRE STRUCTURE IS  
ASSEMBLED.**

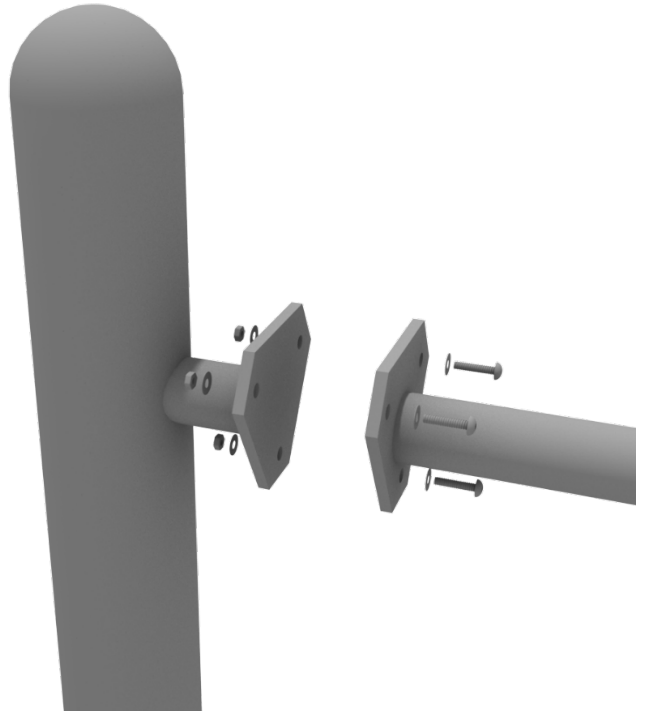
Refer to the General Installation  
guide footing information and dig  
proper holes for the support posts.



# Get Physical Series – Standard Attachment Point Installation

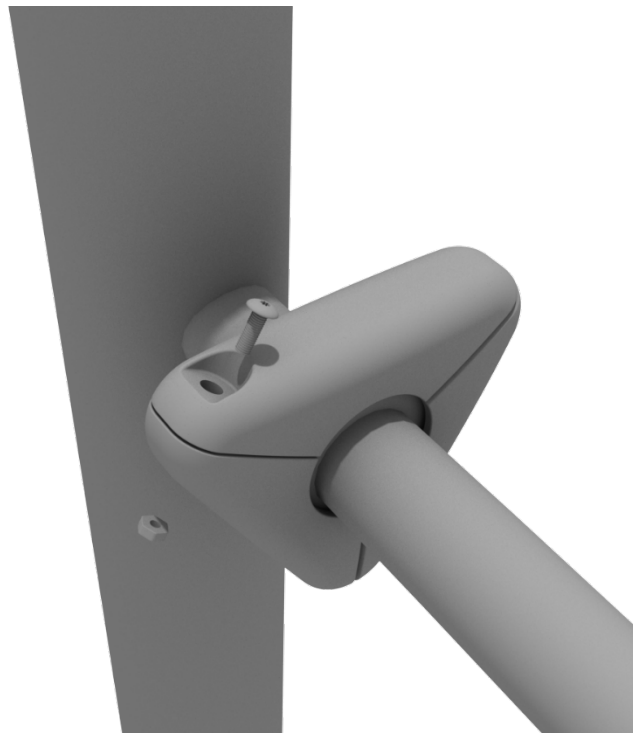
## STEP: 1

Most components of a Get Physical series structure attach using this standard attachment point. Use three (3) M10\*25 bolts, six (6) M10 washers, and three (3) M10 lock nuts.



## STEP: 2

Each of these attachment points has a rubber cover to protect the bolts. Attach the cover and secure using the pre-attached M8\*40 bolt and M8 lock nut.

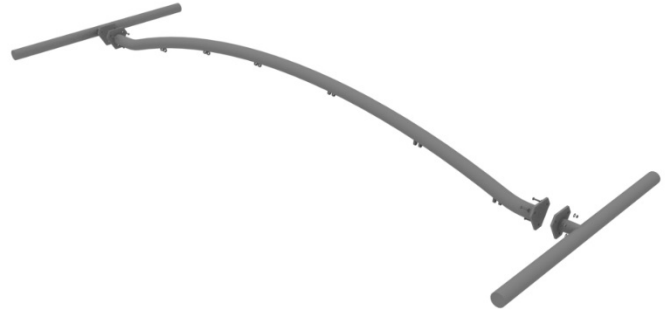


# Get Physical Series – Tilted Pebble Bridge Install

## STEP: 1

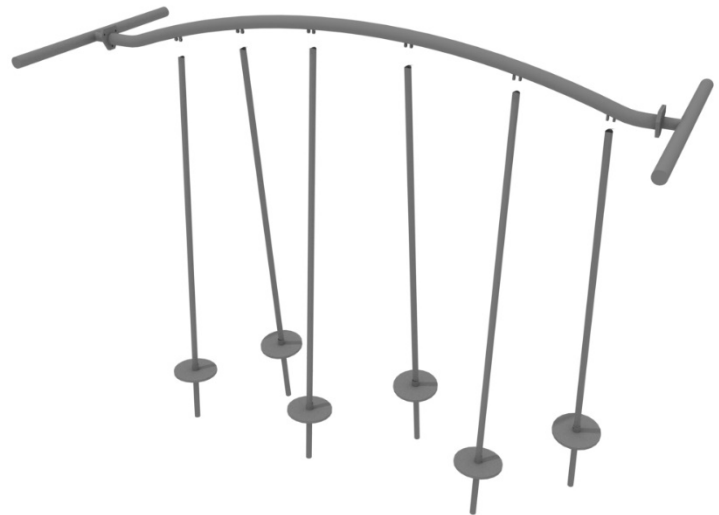
Connect the Tilted Pebble Bridge top rail to the appropriate posts via the Standard Attachment Point.

Refer to the Standard Attachment Point install section for more detailed information.



## STEP: 2

Dig suitable footings for each of the pebble steps. Please refer to the footing section for climbers in the General Installation Instructions document.



**STEP: 3**

Each of the pebble steps will attach to the top rail using one (1) M10\*55 bolt, two (2) M10 washers, and one (1) M10 lock nut.

