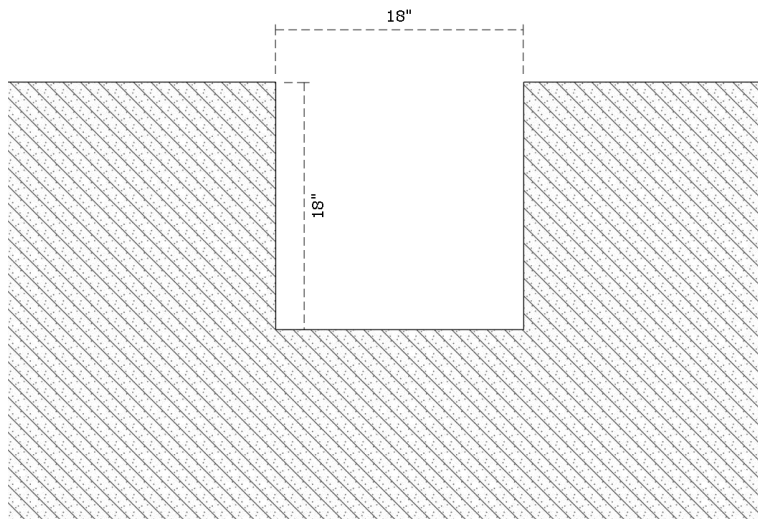


# Simple Bongo Drum J-Bolt Installation

## STEP: 1

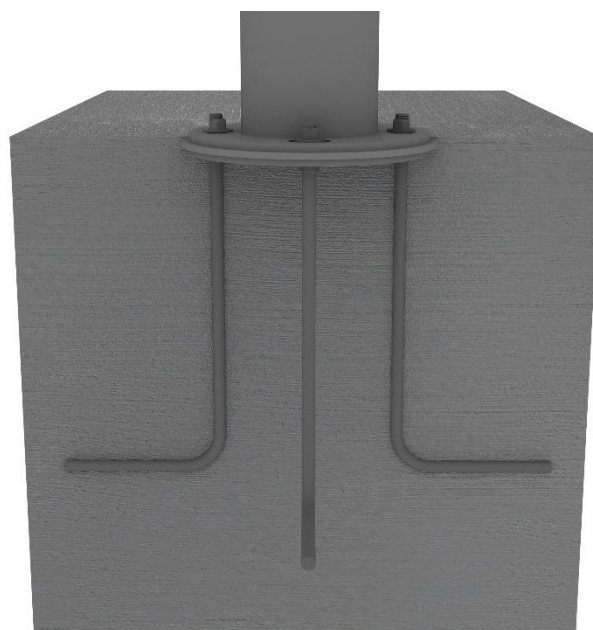
Dig footer (18" x 18" x 18") and fill with concrete. Allow concrete to begin to set before sinking L-Bracket into the mixture.



## STEP: 2

Using J-Bolts, slide bolts through each of the holes in base plate. (The J portion of the bolt will be buried in the concrete.) Loosely attach bolts to plate with lock nuts and washers.

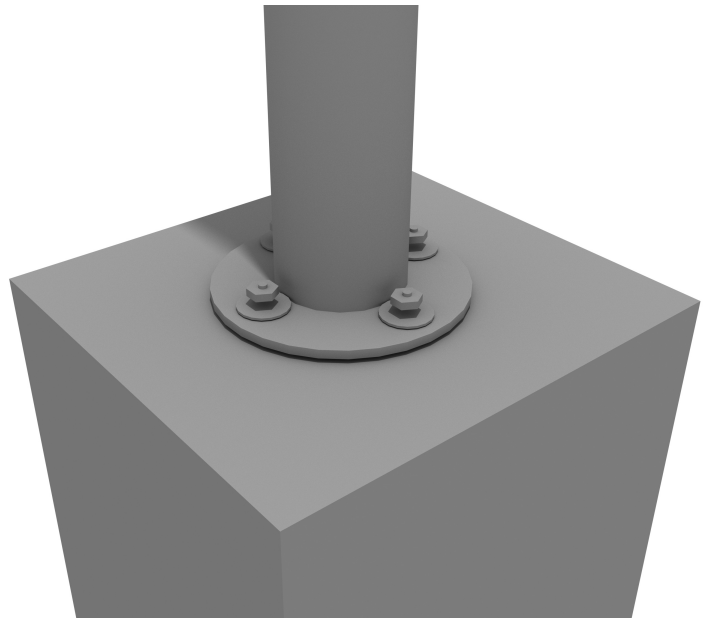
The extra nuts will be placed just a few threads on the top of each J-Bolt to help hammer the entire assembly firmly into the concrete mix. (This helps make sure the bolt does not strip due to the hammering.)



# Simple Bongo Drum J-Bolt Installation

## STEP: 3

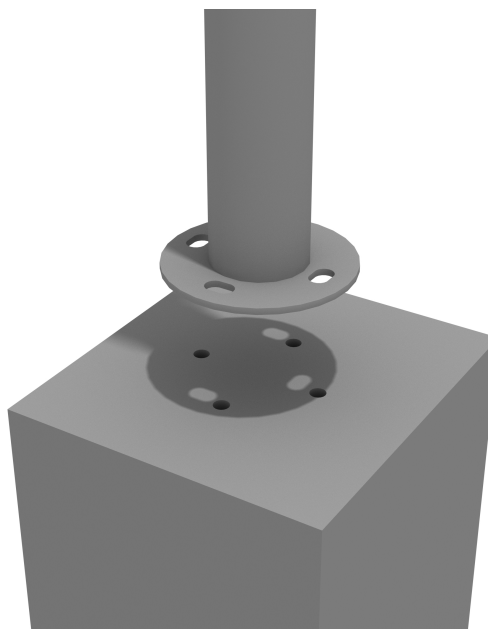
Using four (4) lock nuts and four (4) washers, tighten the nuts into the previously hammered in anchors.



# Simple Bongo Drum Concrete Anchor Install

## STEP: 1

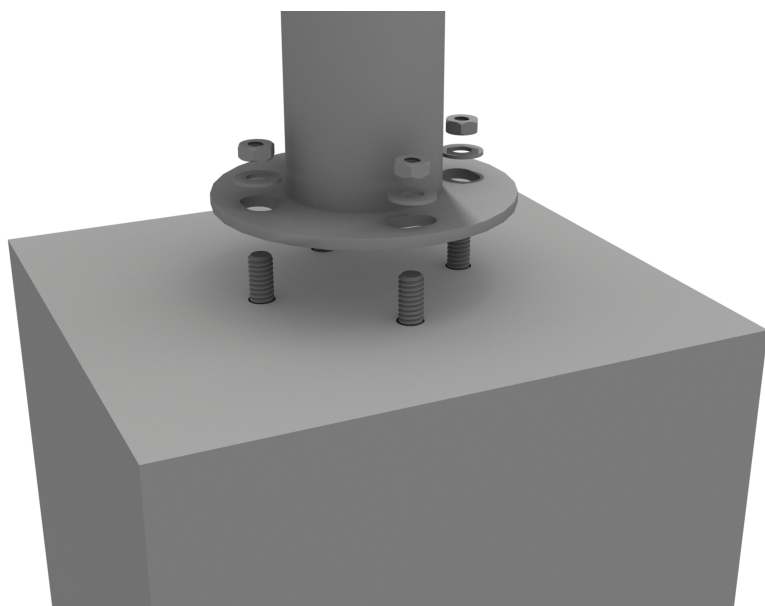
Drill four (4) holes into the concrete 1/2 inch deeper than the anchor will penetrate. Make sure that the minimum embedment requirements are met. Clean out the holes.



## STEP: 2

(The non threaded portion of the bolts will be hammered in the concrete holes.)

Using four (4) lock nuts and four (4) washers, tighten the nuts into the previously hammered in anchors.



# Base Cap Install

## STEP: 1

Cover The bottom plate using the included plastic cover and remaining included hardware.



# Metallophone Installation

## STEP: 1

Using eight (8) M8 set screws connect metallophone top to post.



## STEP: 2

Attach mallets to post using V-bracket supplied and two (2) M6 set screws for each bracket.

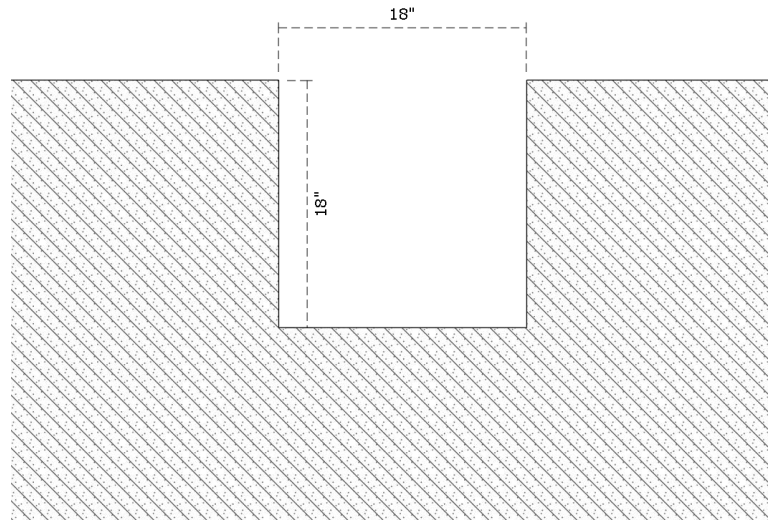




# Metallophone J-Bolt Mount Install

## STEP: 1

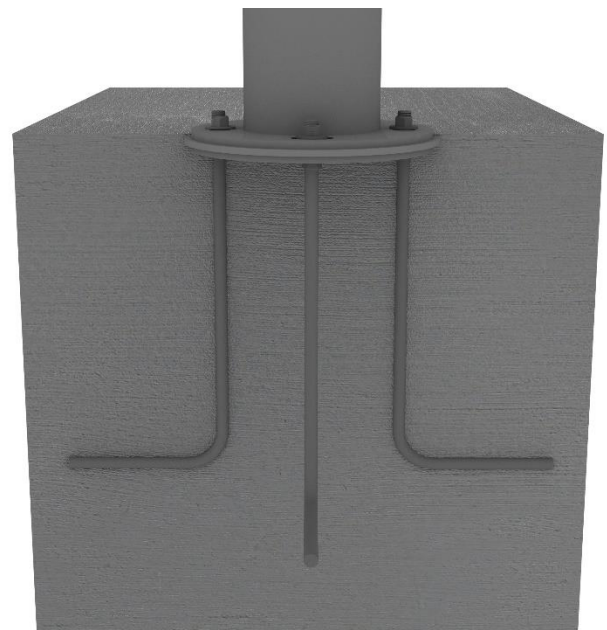
Dig footer (18" x 18" x 18") and fill with concrete. Allow concrete to begin to set before sinking J-Bolts into the mixture.



## STEP: 2

Using J-Bolts, slide bolts through each of the holes in base plate. (The J portion of the bolt will be buried in the concrete.) Loosely attach bolts to plate with lock nuts and washers.

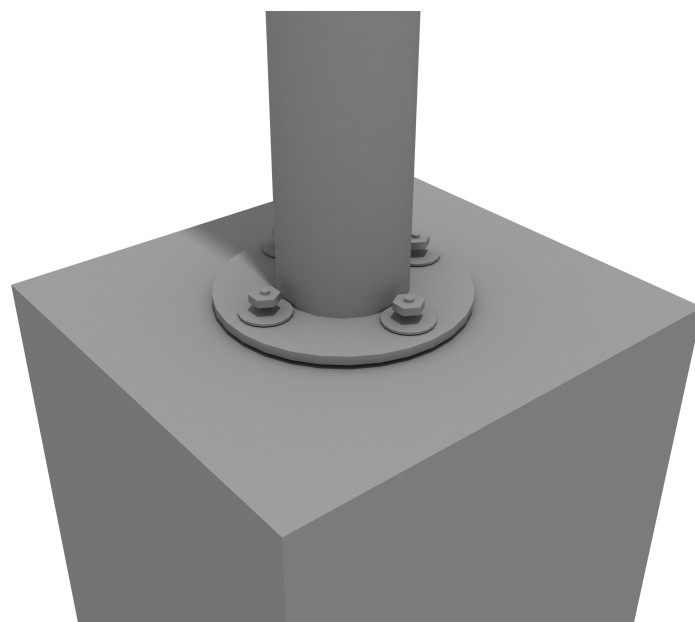
The extra nuts will be placed just a few threads on the top of each J-Bolt to help hammer the entire assembly firmly into the concrete mix. (This helps make sure the bolt does not strip due to the hammering.)



# Metallophone J-Bolt Mount Install

## STEP: 3

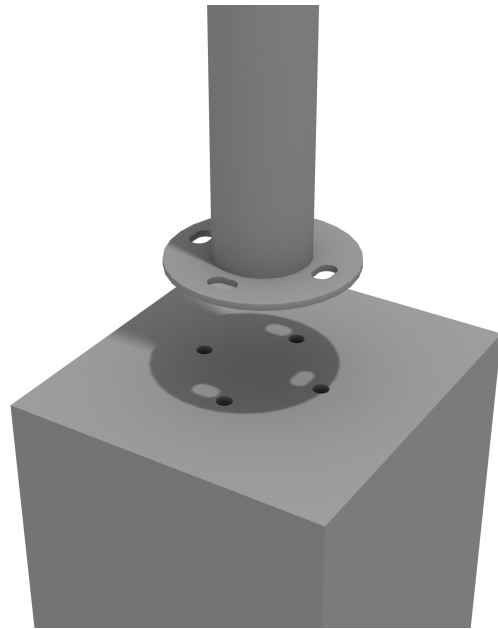
Using four (4) lock nuts and four (4) washers, tighten the nuts into the previously hammered in anchors.



# Metallophone Surface Mount Install

## STEP: 1

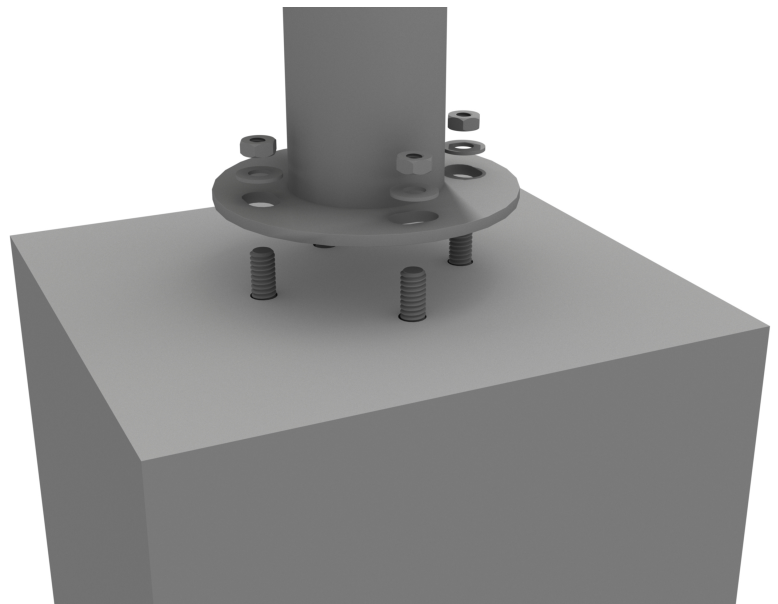
Drill four (4) holes into the concrete 1/2 inch deeper than the anchor will penetrate. Make sure that the minimum embedment requirements are met. Clean out the holes.



## STEP: 2

(The non threaded portion of the bolts will be hammered in the concrete holes.)

Using four (4) lock nuts and four (4) washers, tighten the nuts into the previously hammered in anchors.





# Metallophone Surface Mount Install

## STEP: 1

Cover The bottom plate of the flower drum using the included plastic cover and remaining included hardware.



# Glockenspiel Installation

## STEP: 1

Using four (4) M8 set screws  
connect Glockenspiel top to post.



## STEP: 2

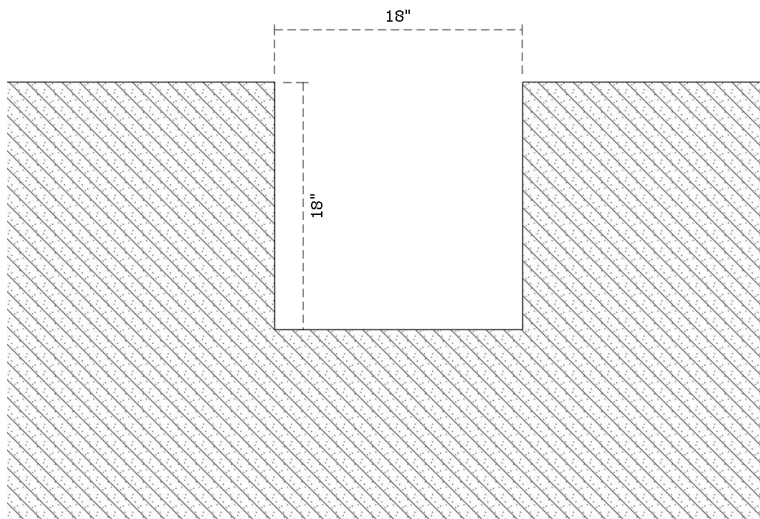
Attach mallets to post using V-  
bracket supplied and two (2)  
M6 set screws.



# Glockenspiel J-Bolt Mount Install

## STEP: 1

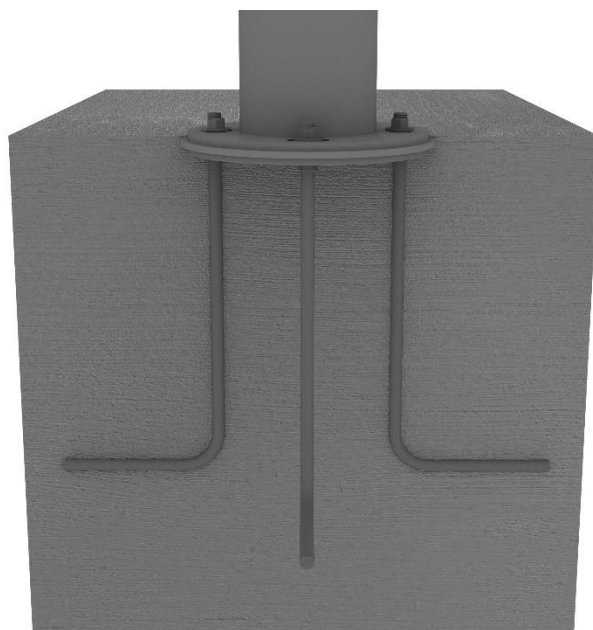
Dig footer (18" x 18" x 18") and fill with concrete. Allow concrete to begin to set before sinking J-Bolts into the mixture.



## STEP: 2

Using J-Bolts, slide bolts through each of the holes in base plate. (The J portion of the bolt will be buried in the concrete.) Loosely attach bolts to plate with lock nuts and washers.

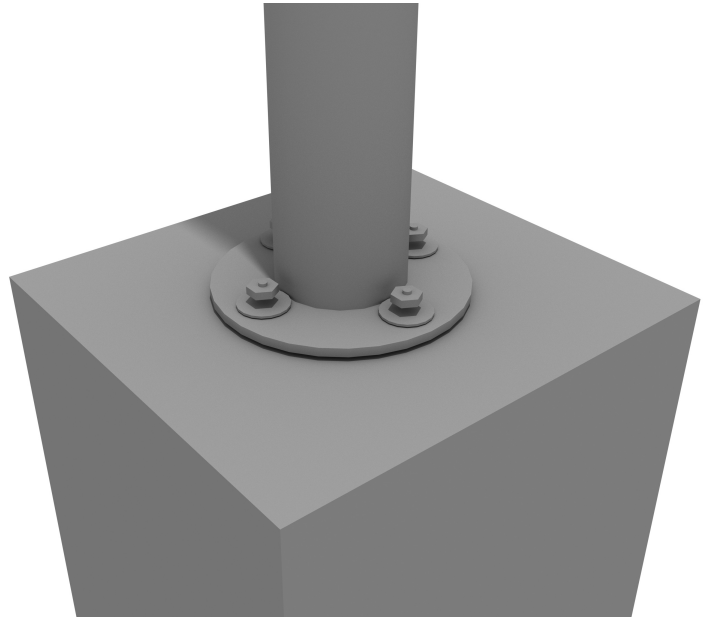
The extra nuts will be placed just a few threads on the top of each J-Bolt to help hammer the entire assembly firmly into the concrete mix. (This helps make sure the bolt does not strip due to the hammering.)



# Glockenspiel J-Bolt Mount Install

## STEP: 3

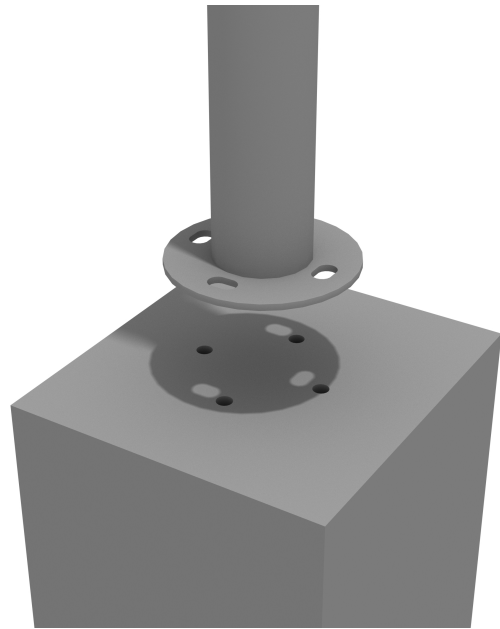
Using four (4) lock nuts and four (4) washers, tighten the nuts into the previously hammered in anchors.



# Glockenspiel Surface Mount Install

## STEP: 1

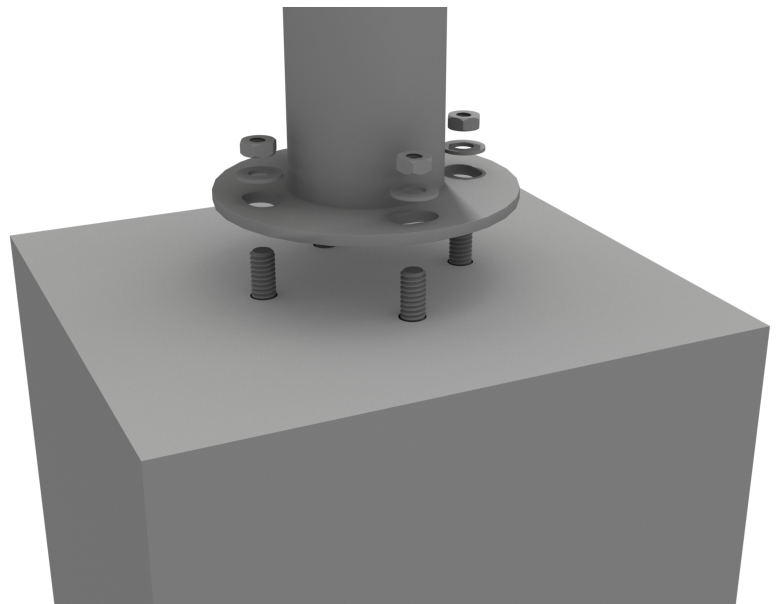
Drill four (4) holes into the concrete  
1/2 inch deeper than the anchor  
will penetrate. Make sure that the  
minimum embedment  
requirements are met.  
Clean out the holes.



## STEP: 2

(The non threaded portion of the  
bolts will be hammered in the  
concrete holes.)

Using four (4) lock nuts and four  
(4) washers, tighten the nuts into  
the previously hammered in  
anchors.



# Base Cap Install

## STEP: 1

Cover The bottom plate using the included plastic cover and remaining included hardware.

