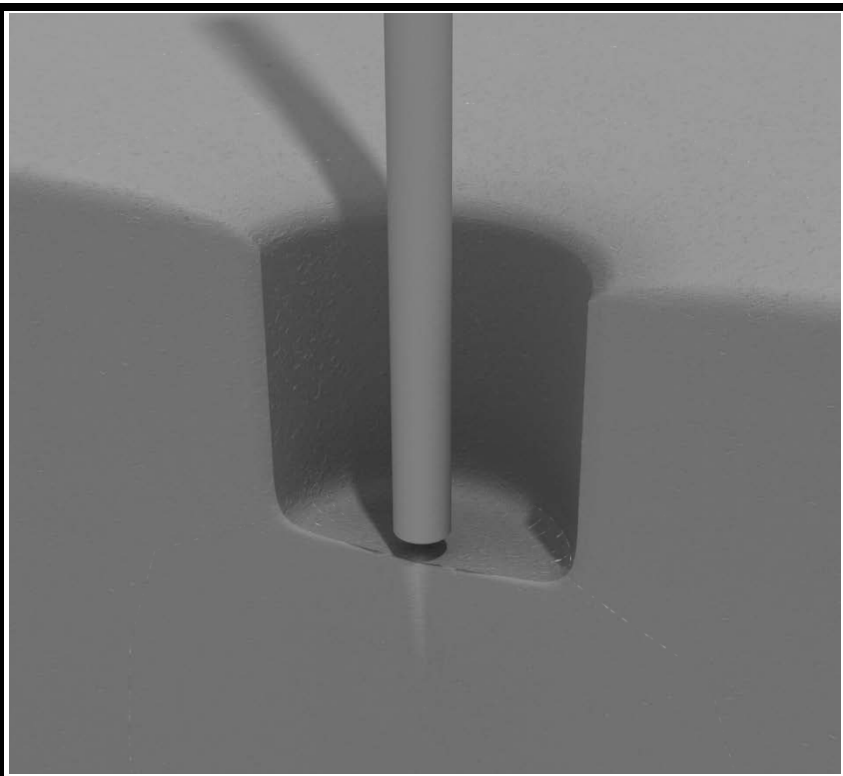


STEP: 1

**DO NOT CEMENT POSTS INTO PLACE
UNTIL THE ENTIRE STRUCTURE IS
ASSEMBLED.**

Refer to the General Installation
guide footing information and dig
proper holes for the support posts.



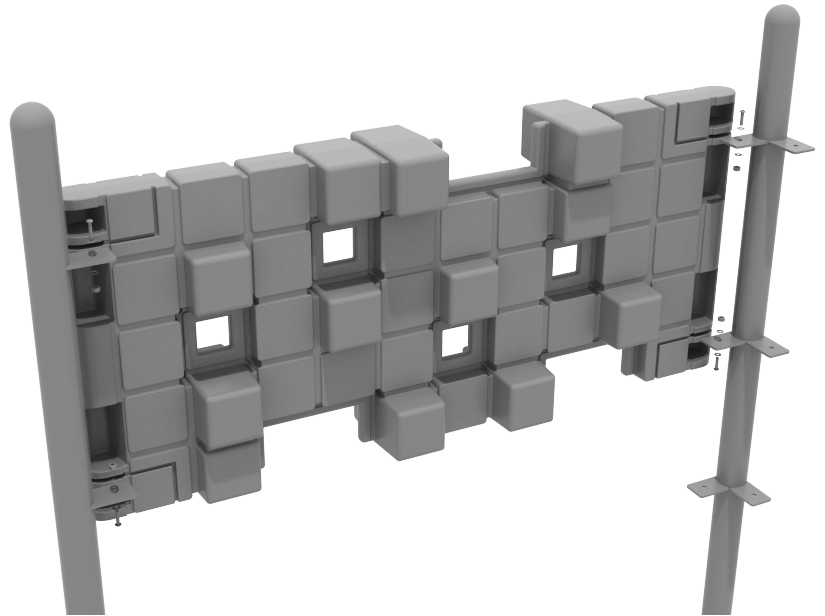
10859 Washington
St. Suite 200,
Indianapolis, IN
1-800-667-0097

Created By: Nic Moss
Date: 03/28/2022

Pixel Wall Installation

STEP: 1

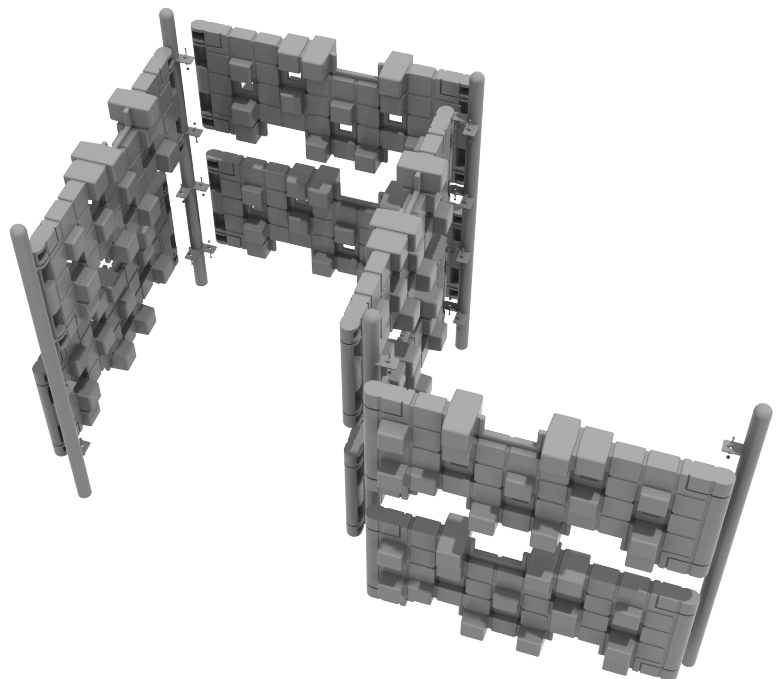
First, attach a Pixel Climber to the post in the correct orientation using 4 (four) M10 Bolts, 8 (eight) Washers, and 4 (four) Lock Nuts.



STEP: 2

Then, attach the the following Pixel Climber 2 (two) per side of the wall. Using 4 (four) M10 Bolts, 8 (Eight) Washers, and 4 (Four) Lock Nuts per pixel climber.

Ensure each Pixel Climber per wall are installed properly. Making sure there are two half square holes on the bottom of each pixel.



Pixel Wall Installation

STEP: 3

See general installation guide regarding footing information for the figure climber.

