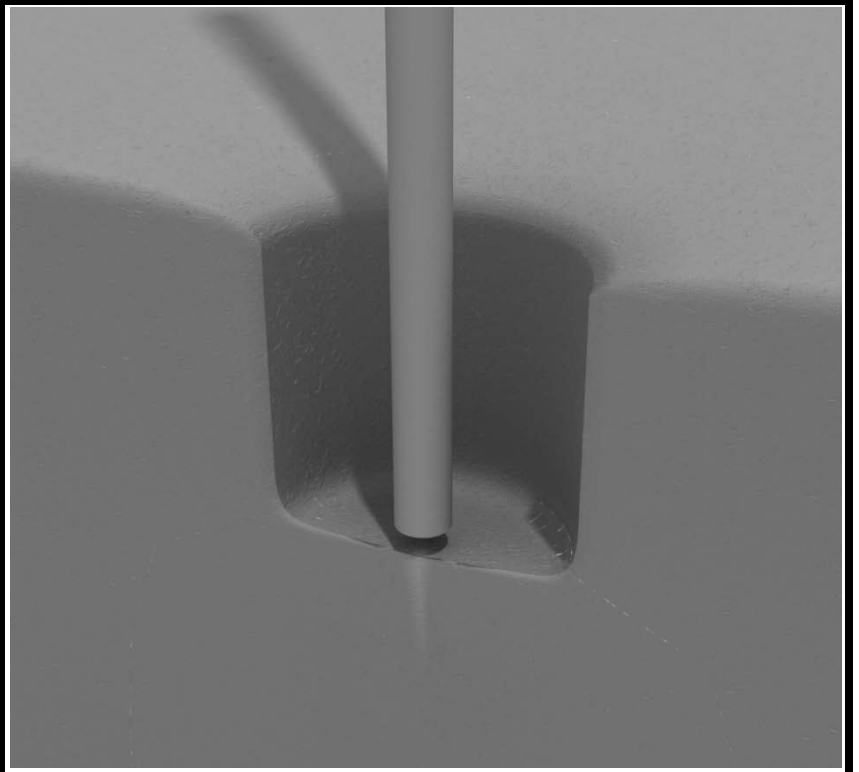


## STEP: 1

**DO NOT CEMENT POSTS INTO PLACE  
UNTIL THE ENTIRE STRUCTURE IS  
ASSEMBLED.**

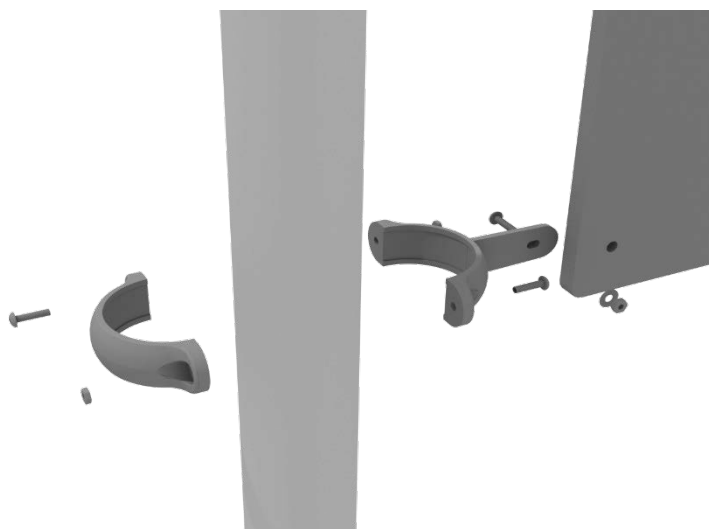
Refer to the General Installation  
guide footing information and dig  
proper holes for the support posts.



## 4.5-inch Clamp Installation Guide

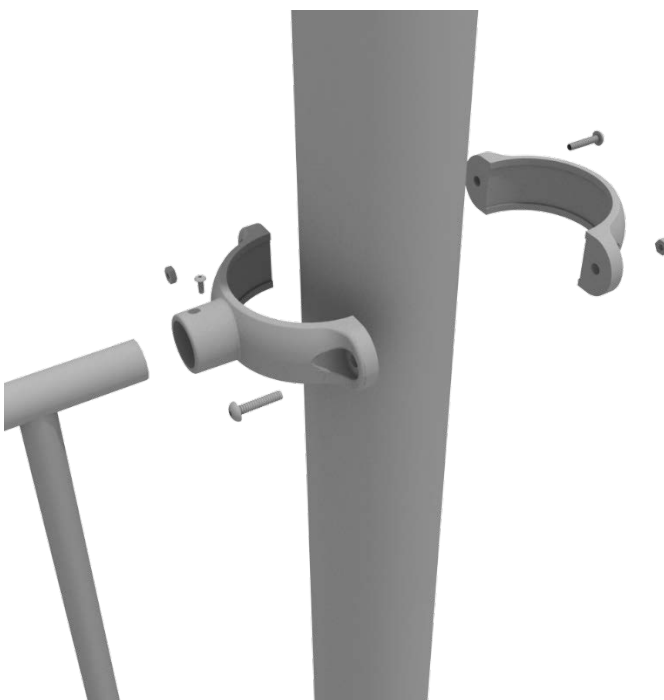
### 4.5-inch Flat Clamp

Connect half of the flat clamp to the component using one (1) M8\*35 bolt and Lock Nut. Then, using the other half of the flat clamp and the hardware provided in the clamp hardware bag, attach the other half of the tube clamp around the post.



### 4.5-inch Tube Clamp

Insert Bar on Component into one half of the Tube Clamp and attach with M4\*25 Set Screw. Then, using the other half of the tube clamp and the hardware provided in the clamp hardware bag, attach the other half of the tube clamp around the post.

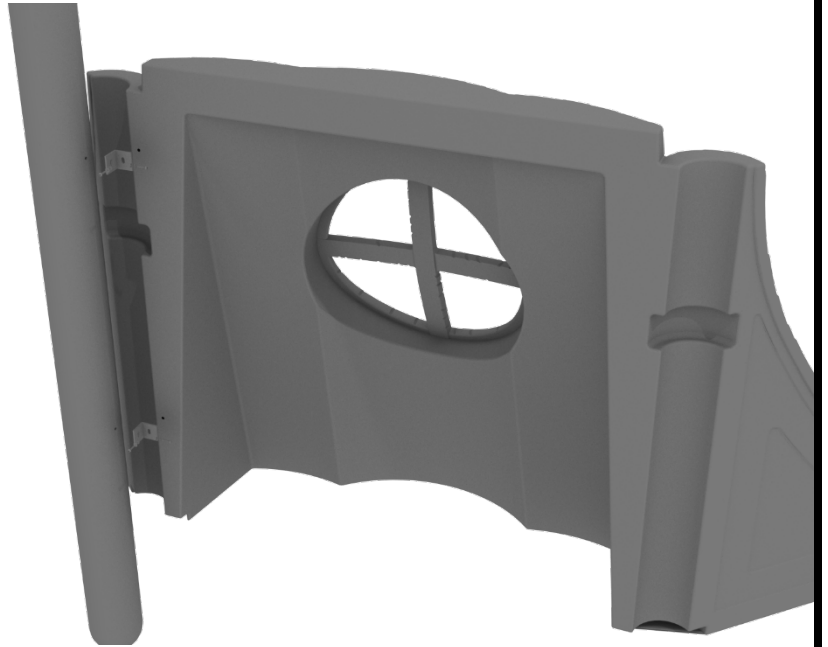


# Treehouse Stump Window Panel Installation

## STEP: 1

Align the Treehouse Stump Window Panel with the intended posts. The posts have a threaded insert that must be lined up correctly with the Treehouse Stump Window Panel.

Using the provided mounting brackets, attach the panel to the posts with eight (8) M8\*30 bolts, eight (8) M8 washers, and eight (8) M8 Spring gaskets.



## STEP: 2

The Treehouse Stump Window Panel can attach to a 2<sup>nd</sup> Treehouse Stump Window Panel using one (1) M8\*45 bolt, and one (1) M10\*45 inner hex nut.

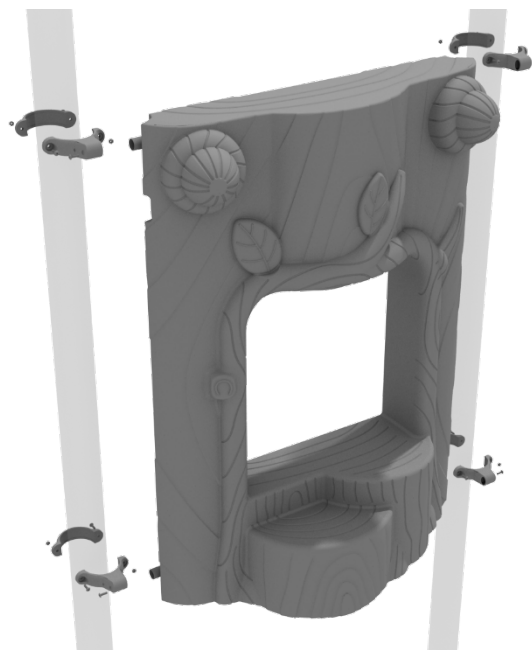
This step does not apply in cases where there is only 1 Treehouse Stump Window Panel.



# Treehouse Stump Store Panel Installation

## STEP: 1

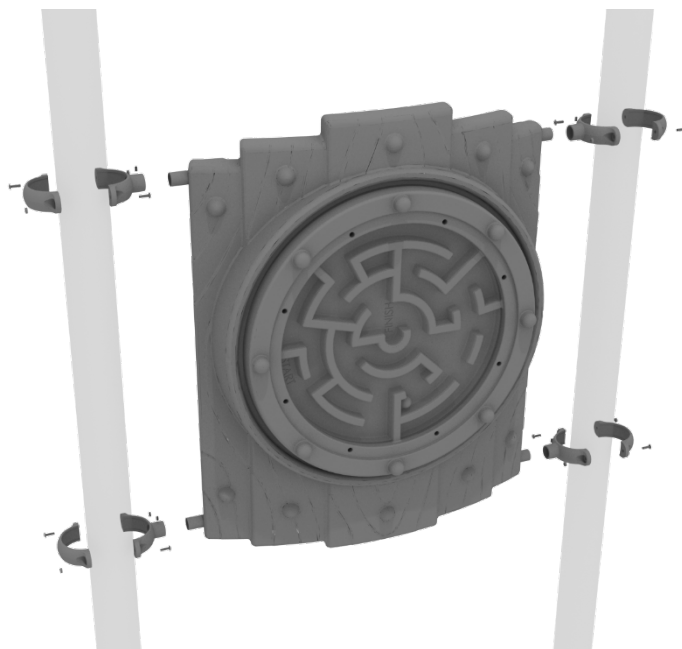
Attach the Treehouse Stump Store Panel using four (4) M4\*25 Set Screws for the four (4) tube clamps, clamping around the appropriate post.



# Treehouse Ball Maze Installation

## STEP: 1

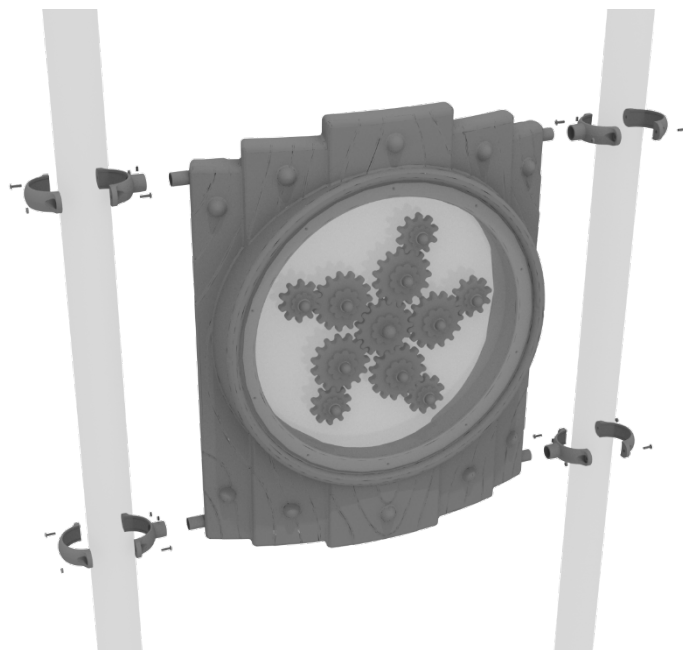
Attach the Treehouse Ball Maze Panel using four (4) M4\*25 Set Screws for the four (4) tube clamps, clamping around the appropriate post.



# Treehouse Gear Panel Installation

## STEP: 1

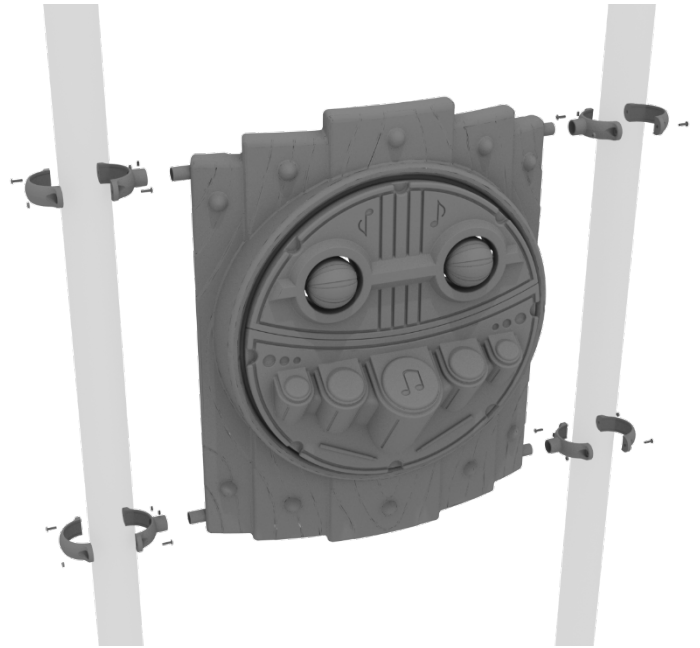
Attach the Treehouse Gear Panel using four (4) M4\*25 Set Screws for the four (4) tube clamps, clamping around the appropriate post.



# Treehouse Percussion Panel Installation

## STEP: 1

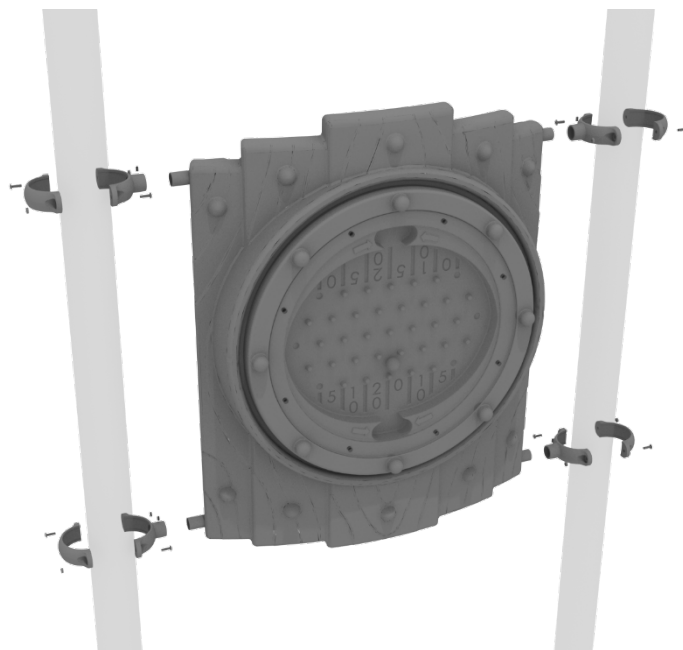
Attach the Treehouse Tic Tac Toe Panel using four (4) M4\*25 Set Screws for the four (4) tube clamps, clamping around the appropriate post.



# Treehouse Plinko Installation

## STEP: 1

Attach the Treehouse Plinko Panel using four (4) M4\*25 Set Screws for the four (4) tube clamps, clamping around the appropriate post.

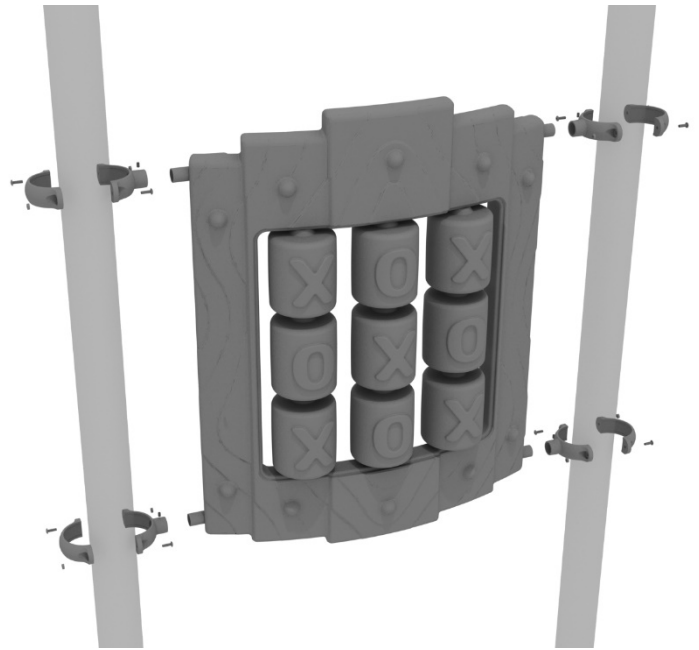




# Treehouse Tic Tac Toe Installation

## STEP: 1

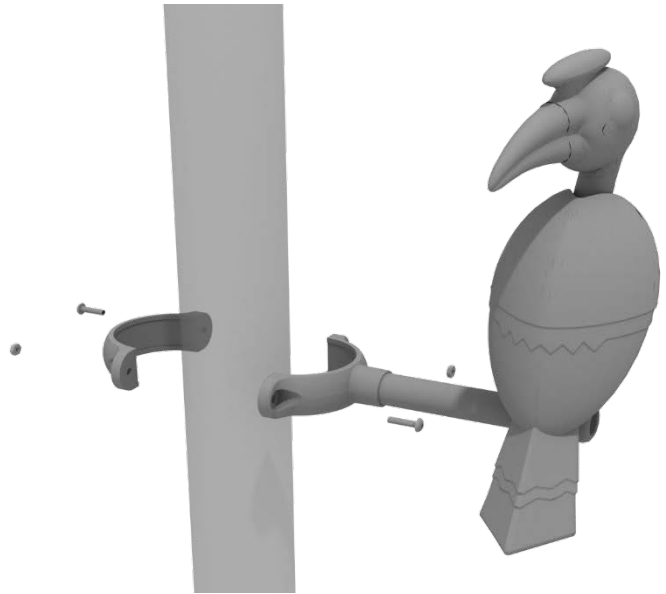
Attach the Treehouse Tic Tac Toe Panel using four (4) M4\*25 Set Screws for the four (4) tube clamps, clamping around the appropriate post.



# Parrot Topper Installation

## STEP: 1

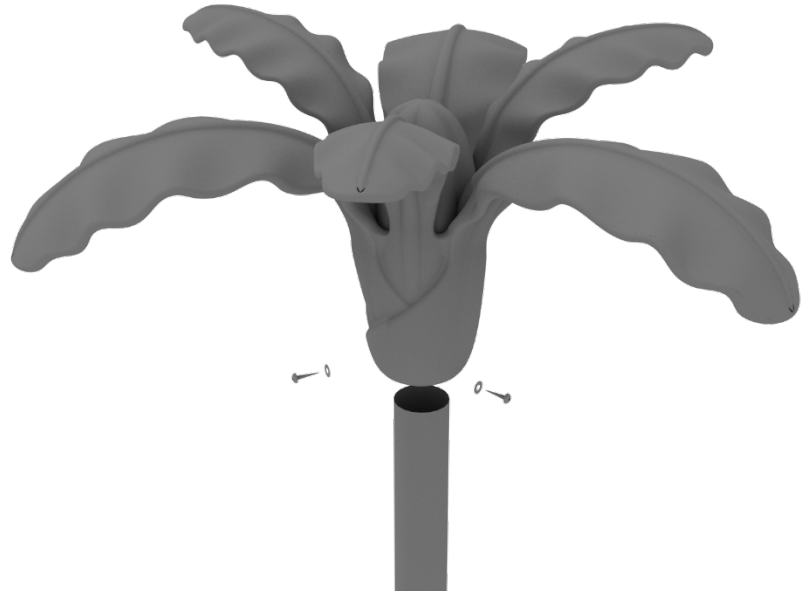
Detach half of the tube clamp connected to the Parrot Topper, and re-attach the clamp around the support post, as shown.



# Palm Tree Topper Installation

## STEP: 1

Place the Palm Tree Topper onto the provided post. Use three (3) M8\*50 set screws and three (3) M\*8 Washers to attach the Flower Face Topper to the post.



# Monkey Topper Installation

## STEP: 1

The hardware and clamps come pre-attached to the Monkey Topper. To install undo the bolts holding the two halves of the Tube Clamps together, then place around the desired post and re-assemble the Tube Clamp.

