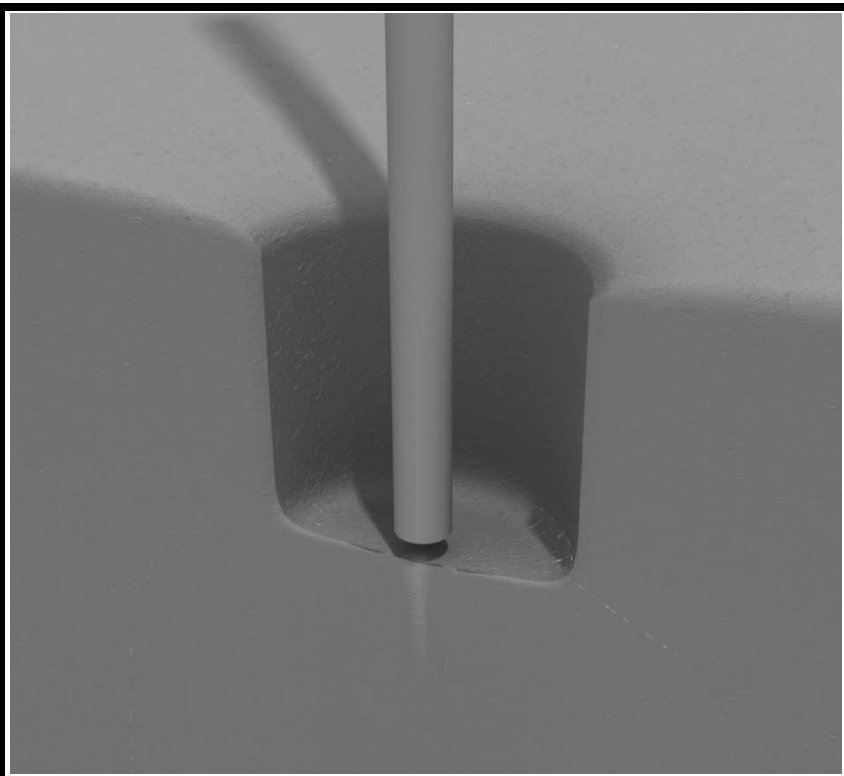


**DO NOT CEMENT POSTS INTO PLACE  
UNTIL THE ENTIRE STRUCTURE IS  
ASSEMBLED.**

Refer to the General Installation  
guide footing information and dig  
proper holes for the support posts.



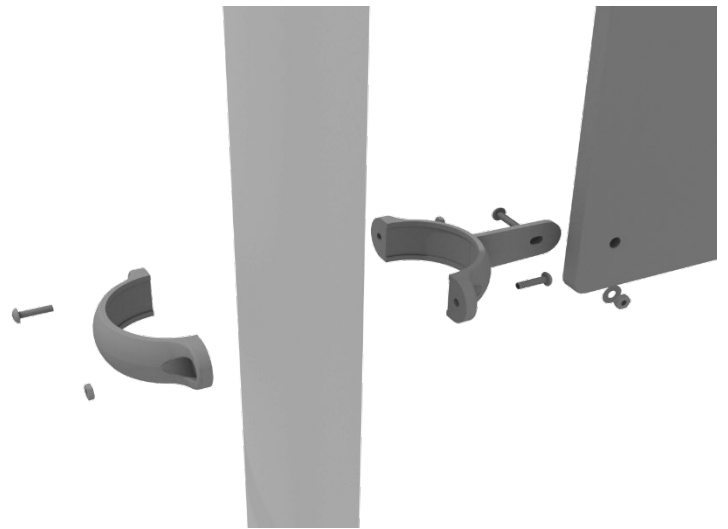
## 5.0-inch Clamp Installation Examples

The following two pages will include examples of how to install some of the most common types of Clamps that are present on our structures that use 5.0-inch outside diameter posts. The structure that you are assembling might not require all the types of clamps listed in these examples.

The Install Guides for specific components that come later in this document might call for a specific type of clamp (a tube clamp for example), those sections will not include detailed instructions for the clamps and should direct you back to this section for more detailed information.

### Flat Clamp Installation Example

Connect half of the flat clamp to the component using one (1) M8\*30 bolt and Lock Nut. Then, using the other half of the flat clamp and the hardware provided in the clamp hardware bag, attach the backside of the flat clamp around the post.



# Clamp Installation Examples

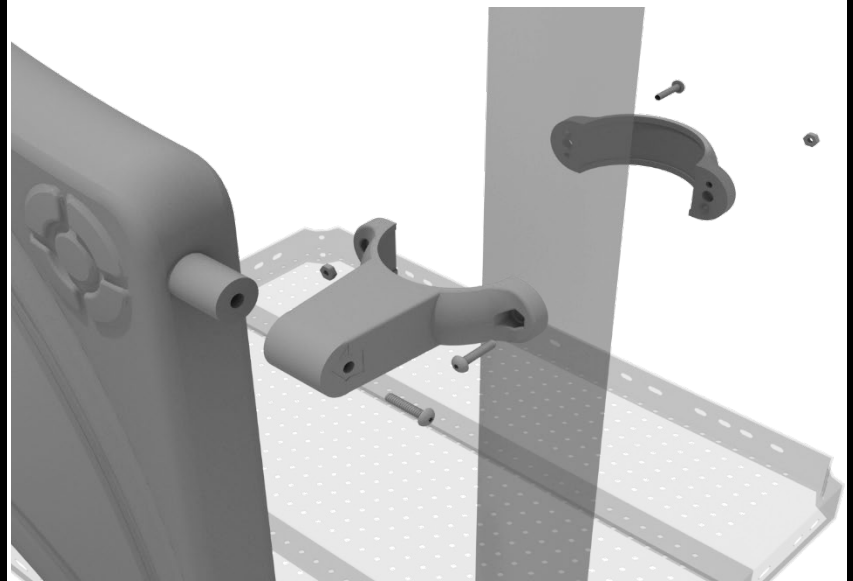
## Tube Clamp Installation Example

Insert Bar on Component into one half of the Tube Clamp and attach with M4\*25 Set Screw. Then, using the other half of the tube clamp and the hardware provided in the clamp hardware bag, attach the backside of the tube clamp around the post.



## Double Slide Clamp Installation Example

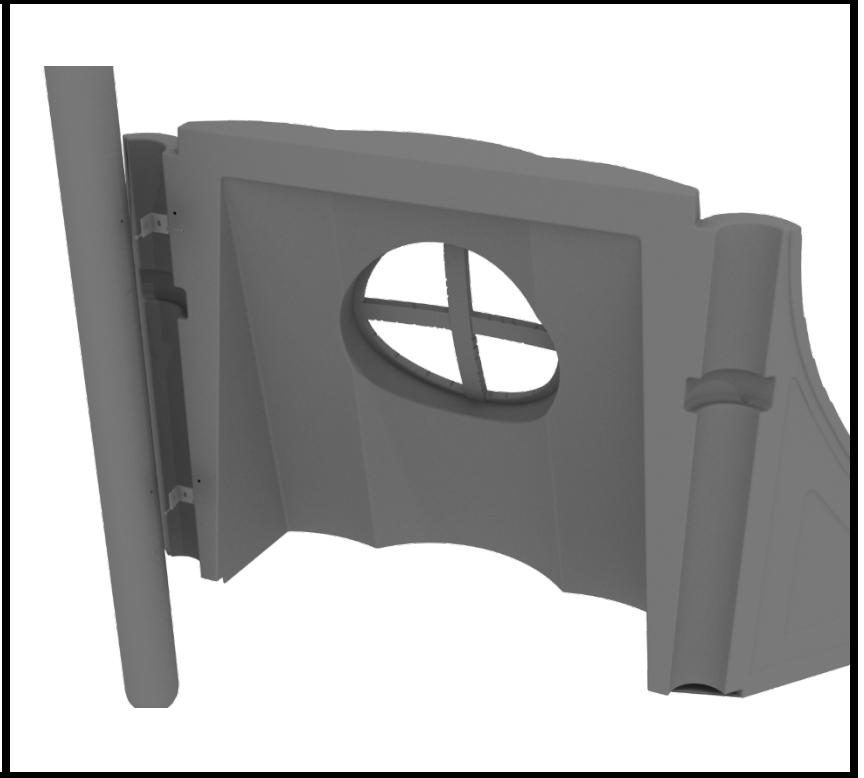
Connect half of the double slide clamp to the double slide hood using one (1) M8\*30 bolt. Then, using the other half of the clamp and the hardware provided in the clamp hardware bag, attach the backside of the double slide clamp around the post.



## STEP: 1

Align the Treehouse Stump Window Panel with the intended posts. The posts have a threaded insert that must be lined up correctly with the Treehouse Stump Window Panel.

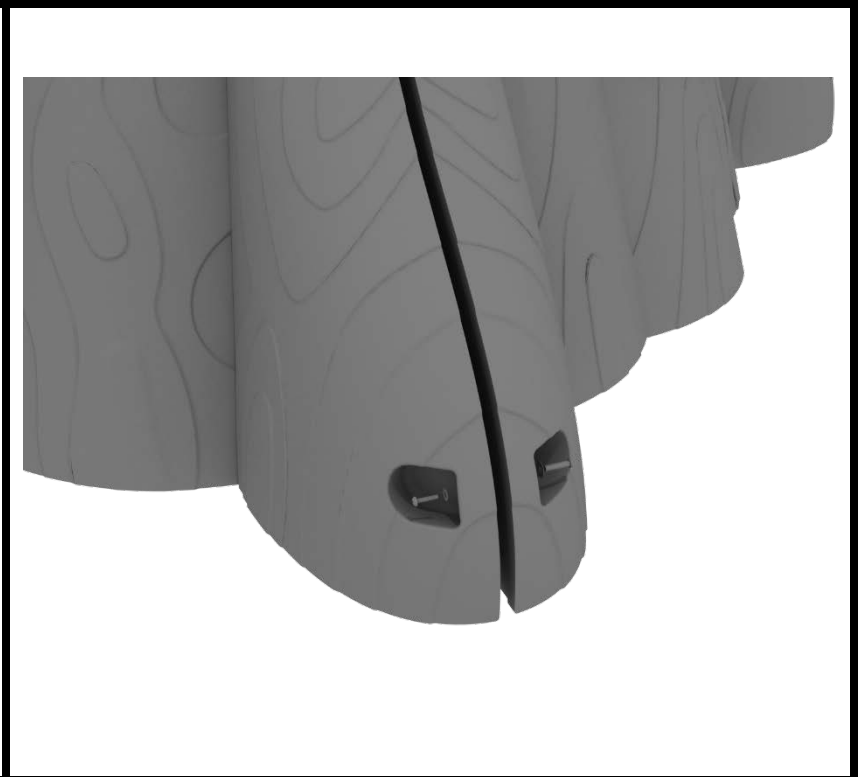
Using the provided mounting brackets, attach the panel to the posts with eight (8) M8\*30 Bolts, eight (8) M8 Washers, and eight (8) M8 Spring Gaskets.



## STEP: 2

The Treehouse Stump Window Panel can attach to a 2<sup>nd</sup> Treehouse Stump Window Panel using one (1) M8\*45 Bolt, and one (1) M10\*45 Inner Hex Nut.

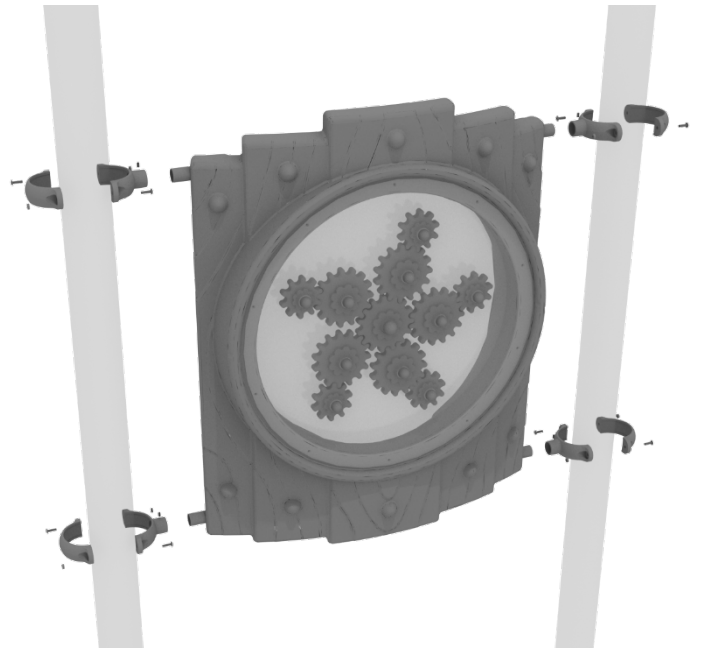
This step does not apply in cases where there is only 1 Treehouse Stump Window Panel.



# Treehouse Gear Panel Installation

## STEP: 1

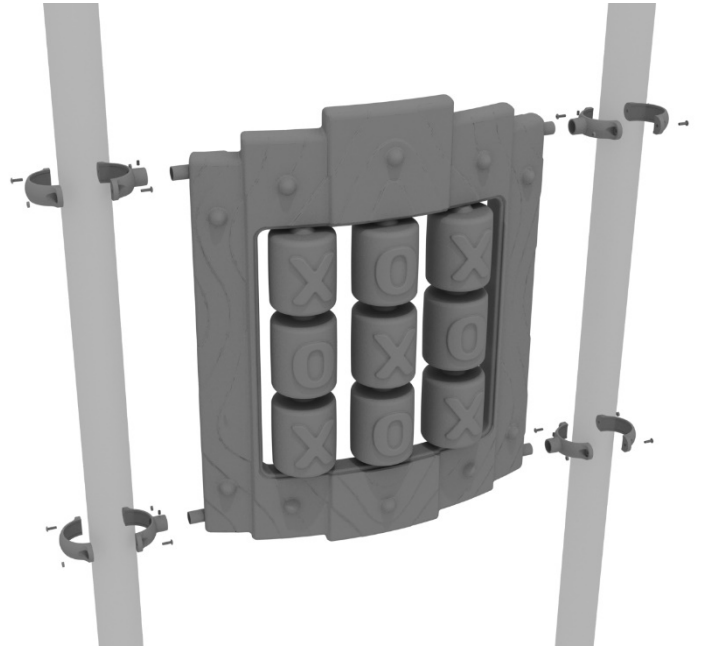
Attach the Treehouse Gear Panel using four (4) M4\*25 Set Screws for the four (4) tube clamps, clamping around the appropriate post.



# Treehouse Tic Tac Toe Installation

## STEP: 1

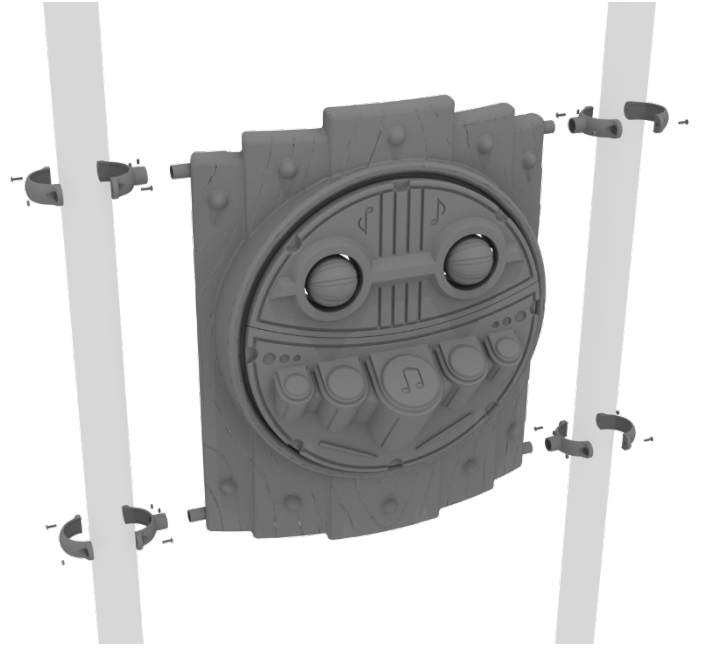
Attach the Treehouse Tic Tac Toe Panel using four (4) M4\*25 Set Screws for the four (4) tube clamps, clamping around the appropriate post.



# Treehouse Percussion Panel Installation

## STEP: 1

Attach the Treehouse Tic Tac Toe Panel using four (4) M4\*25 Set Screws for the four (4) tube clamps, clamping around the appropriate post.



# Treehouse Ball Maze Installation

## STEP: 1

Attach the Treehouse Ball Maze Panel using four (4) M4\*25 Set Screws for the four (4) Tube Clamps, clamping around the appropriate post.

