

# Inground Post/Mount Installation

## STEP: 1

**DO NOT CEMENT POSTS/MOUNTS  
INTO PLACE UNTIL THE ENTIRE  
STRUCTURE IS ASSEMBLED.**

Refer to the General Installation  
guide footing size information and  
digging proper holes for the support  
posts/mounts.



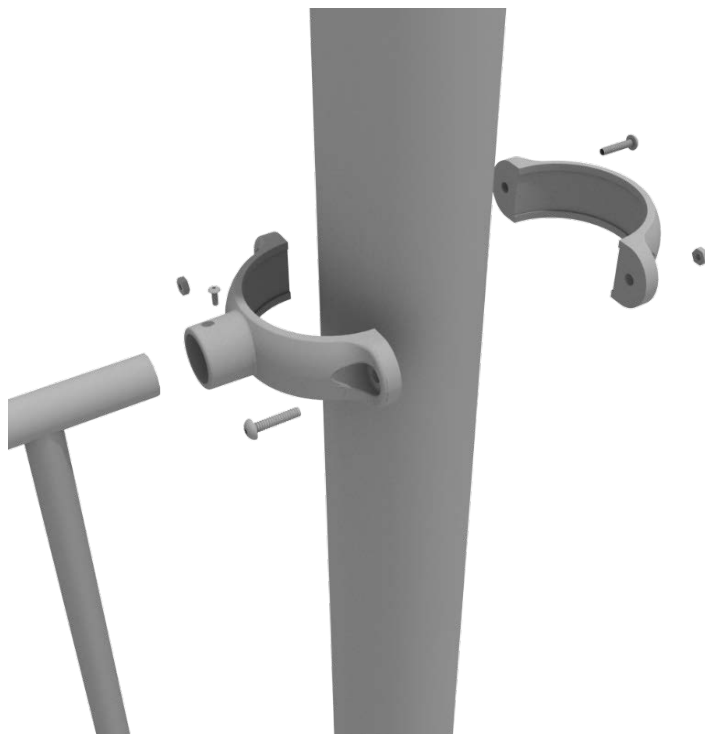
10859 E Washington St. Suite 200  
Indianapolis, IN 46229  
1-800-667-0097

Created By: Gage Brown  
Date: 04/26/2018

## 5.0-inch Clamp Installation Guide

### 5.0-inch Tube Clamp

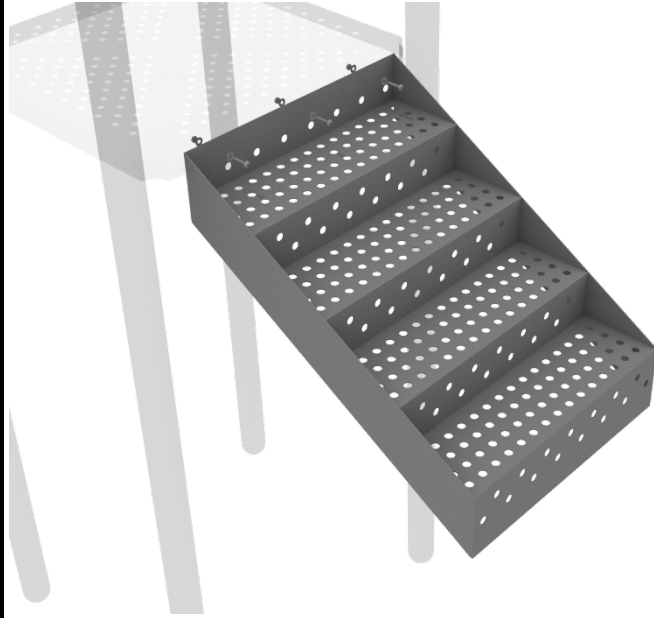
Insert Bar on Component into one half of the Tube Clamp and attach with M4\*25 Set Screw. Then, using the other half of the tube clamp and the hardware provided in the clamp hardware bag, attach the other half of the tube clamp around the post.



## 5.0-inch 4-foot Transfer Station Install

### STEP: 1

Using three (3) M10\*25 Bolts, six (6) M10 Washers, and three (3) M10 Lock Nuts, attach the top of the stairs to the half hex deck.



### STEP: 2

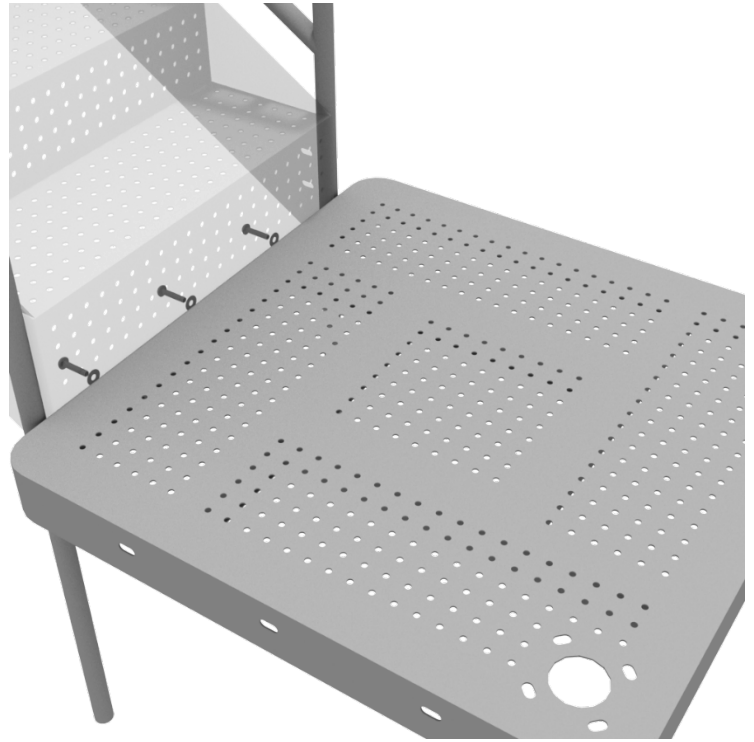
Attach the ADA Transfer Stair Handrails to the posts using Tube Clamps. Then using six (6) M10\*25 Bolts, twelve (12) M10 Washers, and six (6) M10 Lock Nuts, attach the handrail to the bottom and side of the stairs.



## 5.0-inch 4-foot Transfer Station Install

### STEP: 3

Using three (3) M10\*25 Bolts, six (6) M10 Washers, and three (3) M10 Lock Nuts, attach the ADA transfer deck to the base of the 4-foot ADA transfer stair.



### STEP: 4

See general installation guide regarding footing information for the transfer deck handrail. Using four (4) M10\*25 Bolts, eight (8) M10 Washers, and four (4) M10 Lock Nuts, attach each transfer deck handrail to the ADA transfer deck.

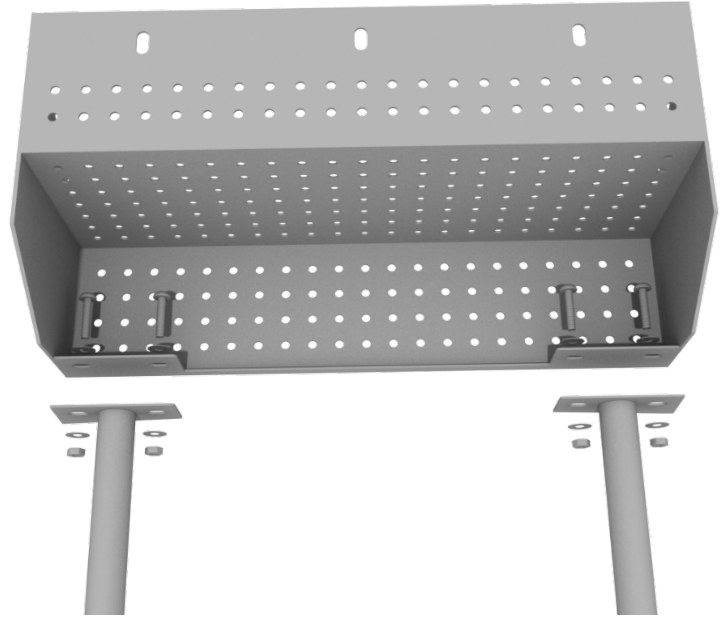




## 5.0-inch 4-foot Transfer Station Install

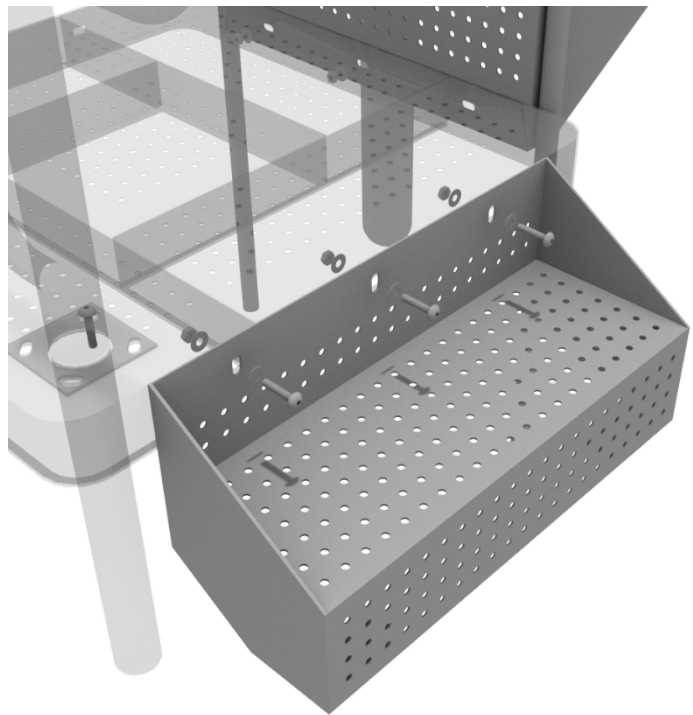
### STEP: 5

See general installation guide regarding footing information for the ADA transfer step mount. Using two (2) M10\*25 Bolts, four (4) M10 Washers, and two (2) M10 Lock Nuts, attach the transfer step to each ADA transfer step mounts.



### STEP: 6

Using three (3) M10\*25 Bolts, six (6) M10 Washers, and three (3) M10 Lock Nuts, attach the top of the ADA transfer step to the ADA transfer deck.



# Square Deck Installation

## STEP: 1

After the posts are in place, using four (4) M10\*35 Bolts, eight (8) M10 Washers, and four (4) M10 Lock Nuts, attach each square deck to each pre-attached deck clamp as shown in the image.

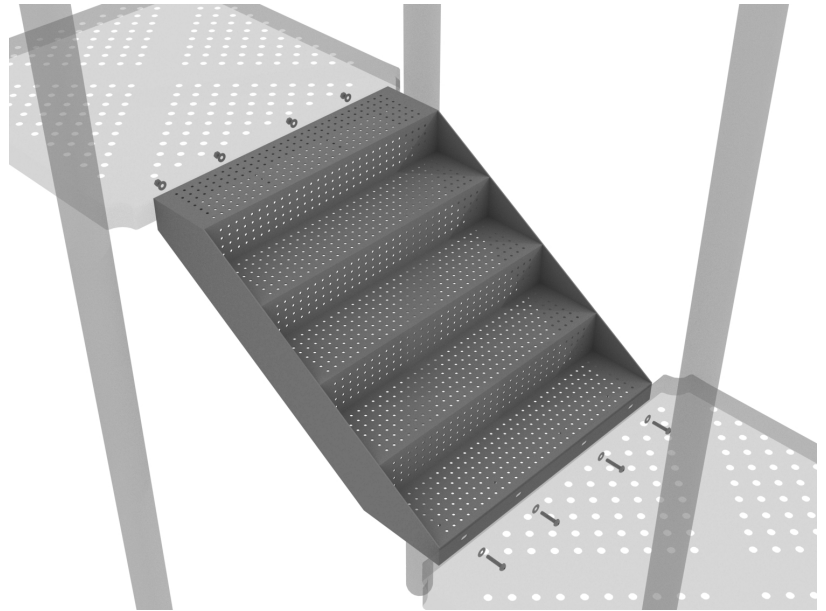
Deck clamps are pre-attached to the posts and should not be altered in any way.



## 5.0-inch 2-Foot Middle Stair Install

### STEP: 1

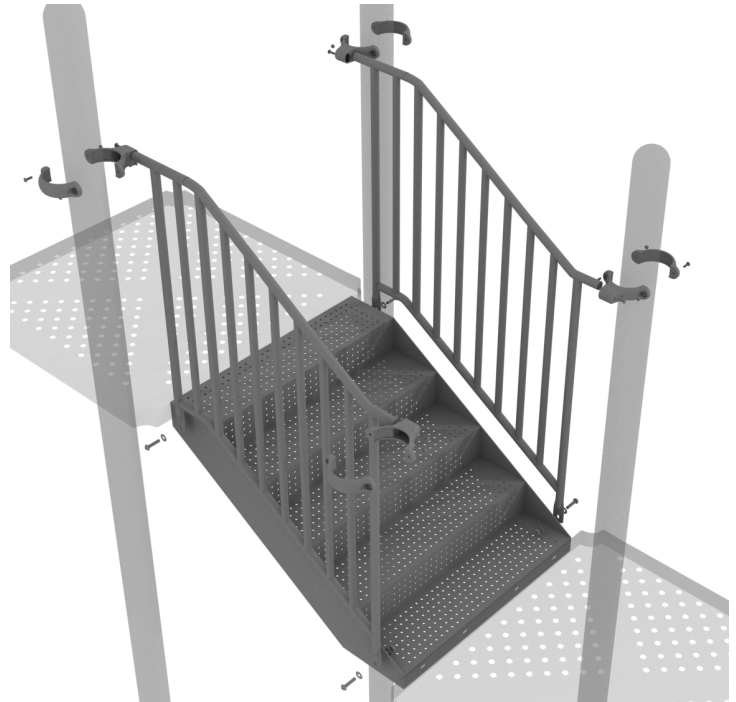
Using eight (8) M10\*25 Bolts, sixteen (16) M10 Washers, and eight (8) M10 Lock Nuts, connect the middle stair from one deck to the next.



### STEP: 2

Connect half of each 5.0-inch tube clamp to the middle handrail using one (1) M8\*35 Bolt. Set the handrail into place, then attach the second half of the clamp using the hardware provided in the clamp bag. Repeat this process for the other handrail.

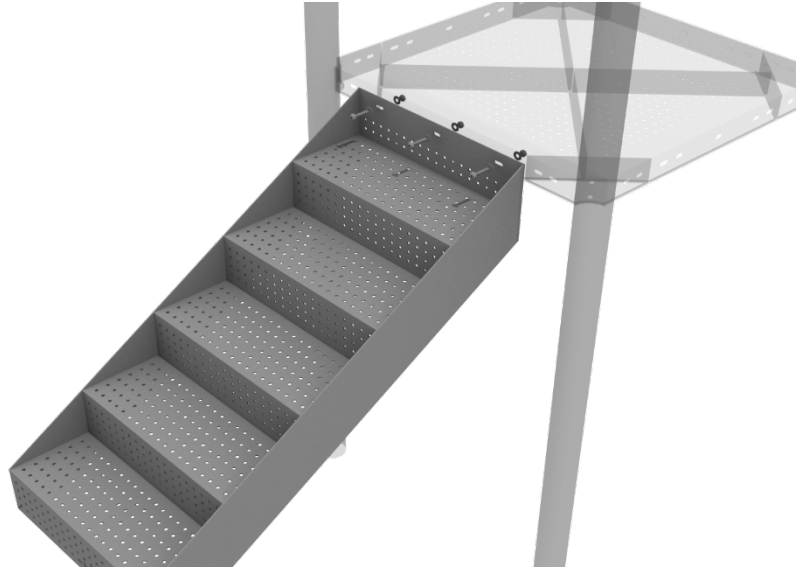
Then, using two (2) M10\*25 Bolts, four (4) M10 Washers, and two (2) M10 Lock Nuts, attach the bottom of the handrail to the side of the stair.



# Elephant Stair Install

## STEP: 1

Connect the Stairway to the deck using three (3) M10\*25 Bolts, six (6) M10 Washers, and three (3) M10 Locking Nuts.



## STEP: 2

One Elephant Stair Handrail connects to the side of the stairway using one (1) M10\*100 Bolt, one (1) M10\*60 Bolt, one (1) M10\*45 Bolt, six (6) M10 Washers, and 3 (3) M10 Locking Nuts.

Repeat for the other Elephant Stair Handrail.

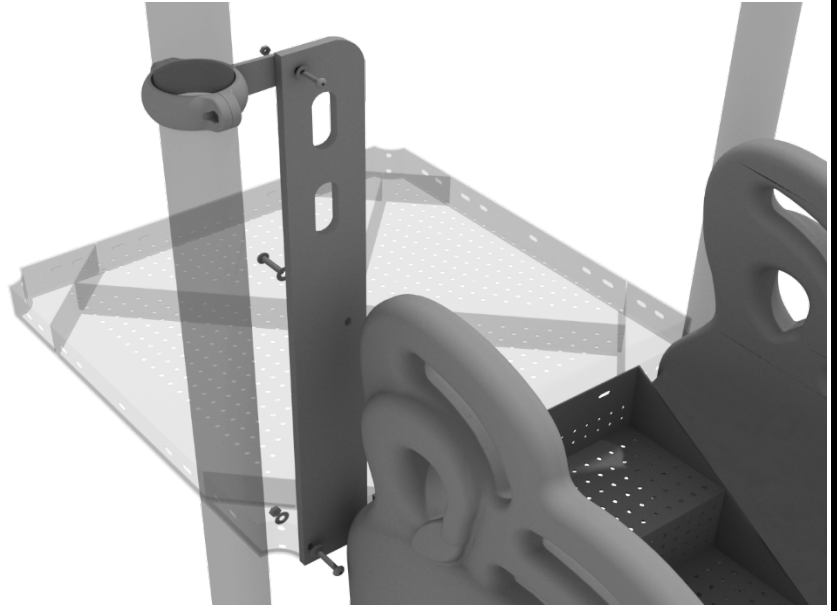


### STEP: 3

The Handrails connect to the Deck using one (1) M10\*35 Bolt, two (2) M10 Washers, and one (1) M10 Locking Nut for each handrail.

The Handrails connect to the Flat Clamps using one (1) M8\*37 Bolt, one (1) M8 Washer, and one (1) m\* Locking Nut for each handrail.

The Handrails attach to the Elephant Stair Handrails using two (2) M10\*25 Bolts, two (2) M10 Spring Washers, and two (2) M10 Washers for each side.

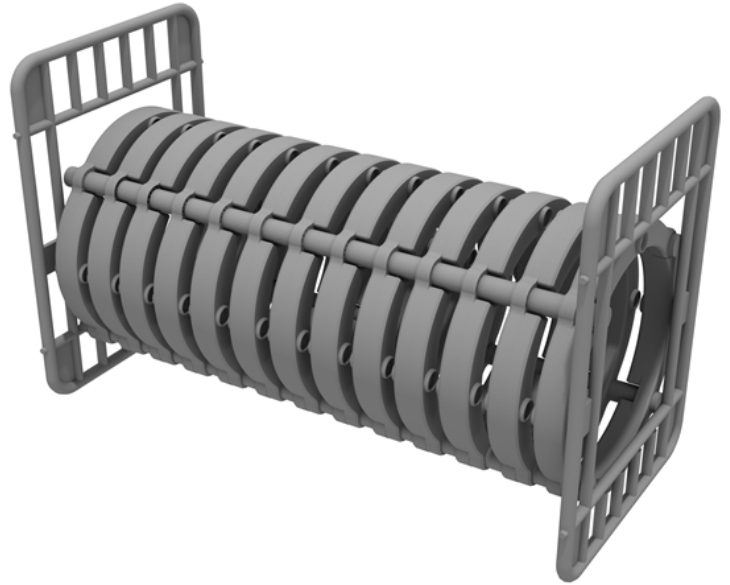




# Bones Tunnel Bridge Install

**Deck:** Connect Bones Bridge Tunnel to corresponding deck using two (2) M10\*25 bolts, four (4) M10 washers and four (4) M10 Lock Nuts for each side.

**Post:** Connect top of bridge bar with clamp using one (1) M4\*25 self tapping screw. Use remaining hardware in clamp bag to secure clamp to post.



# Stump Climber Installation

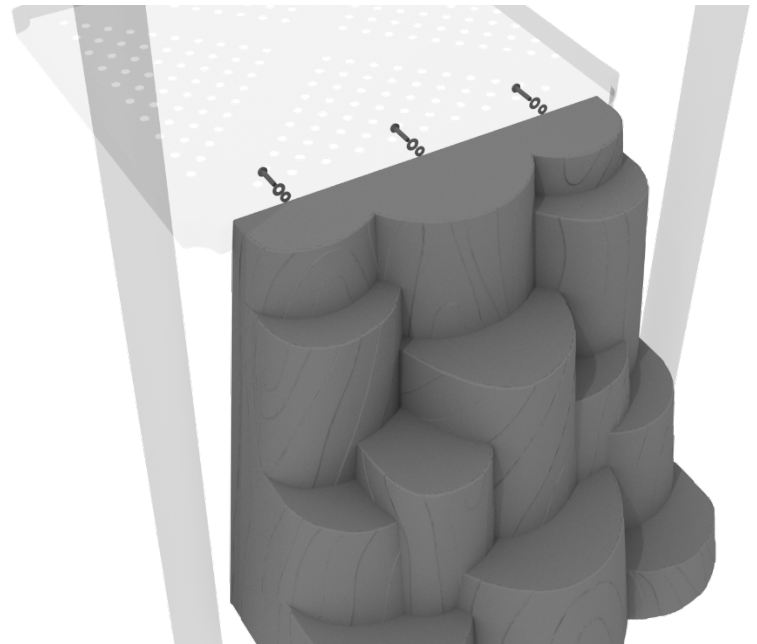
## STEP: 1

See general installation guide regarding footing information for climbers. Using two (2) M10\*20 Bolts, two (2) M10 Spring Gaskets, and two (2) M10 Washers, attach the bottom of the rock whole climber to the climber support posts.



## STEP: 1

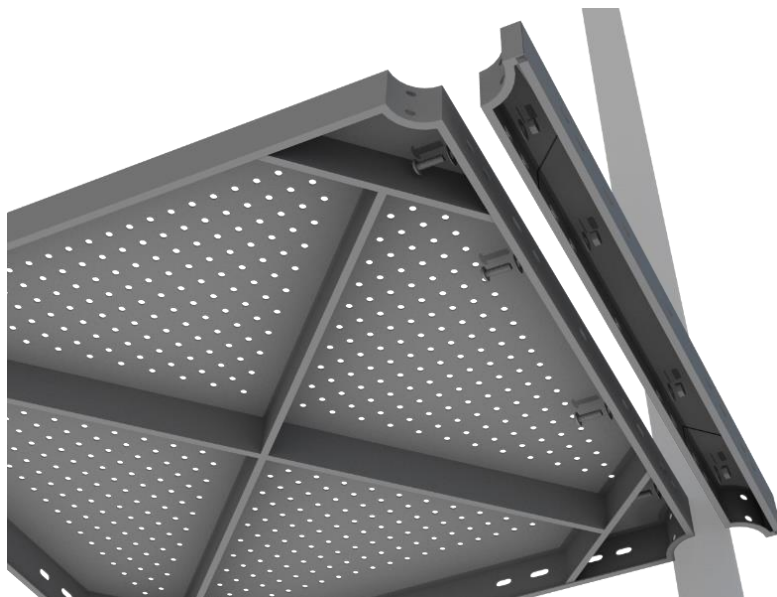
Then, using three (3) M10\*35 Bolts, three (3) M10 Spring Washers, and three (3) M10 Washers, attach the Rock hole climber to the deck.



# 4-foot Double Turn Slide Installation

## STEP: 1

For the double slide, you will first need to attach the double slide deck extension. This will require four (4) M10\*25 bolts, eight (8) M10 washers, and four (4) M10 lock nuts.



## STEP: 2

Then, See general installation guide regarding footing information for the double slide end mounts. Using two (2) M8\*20 bolts, two (2) M8 spring gaskets, and two (2) M8 washers, attach the slide end mounts to the double slide.



# 4-foot Double Turn Slide Installation

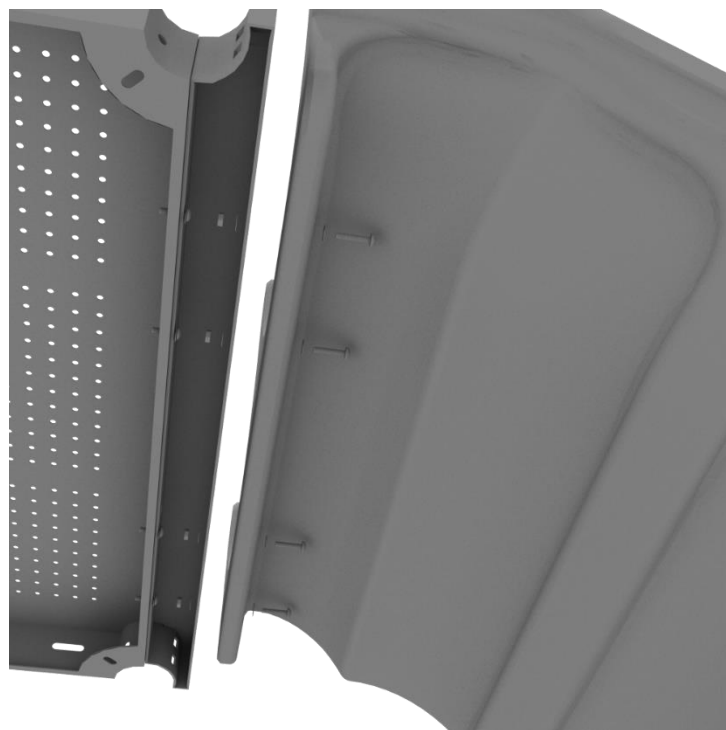
## STEP: 3

Then, See general installation guide regarding footing information for the double slide middle support. Attach the middle support to the slide using two (2) M8\*20 bolts, two (2) M8 spring washers, and two M8 washers.



## STEP: 4

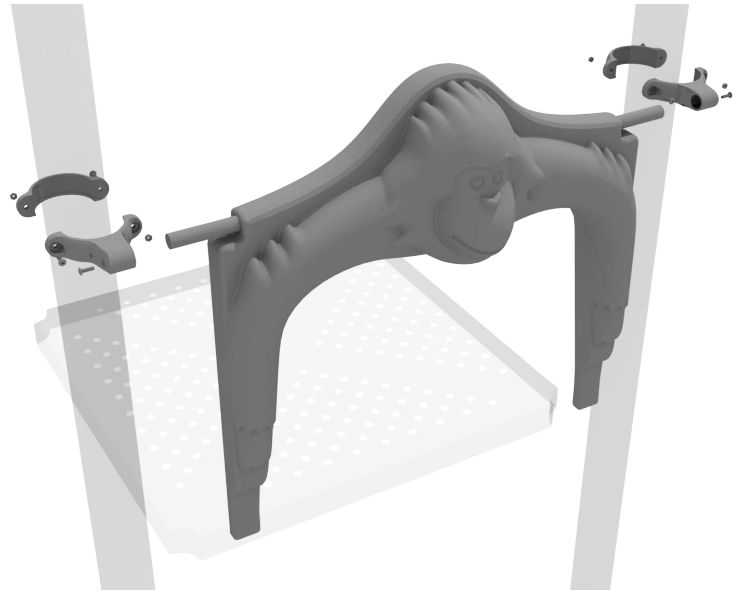
Then, attach the slide to the deck extension using four (4) M10\*45 bolts, eight (8) M10 washers, and four (4) M10 lock nuts.



# 4-foot Double Turn Slide Installation

## STEP: 5

Once the slide is attached, take the double slide hood and insert it into the top of the slide, and then attach the top using two (2) double slide clamps, and two (2) M8\*30 bolts.

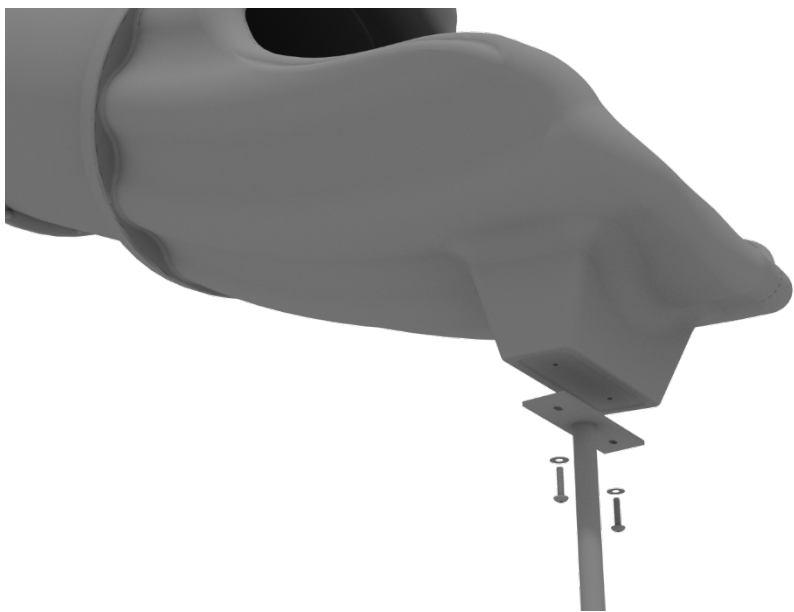




# Treehouse Tube Slide Installation

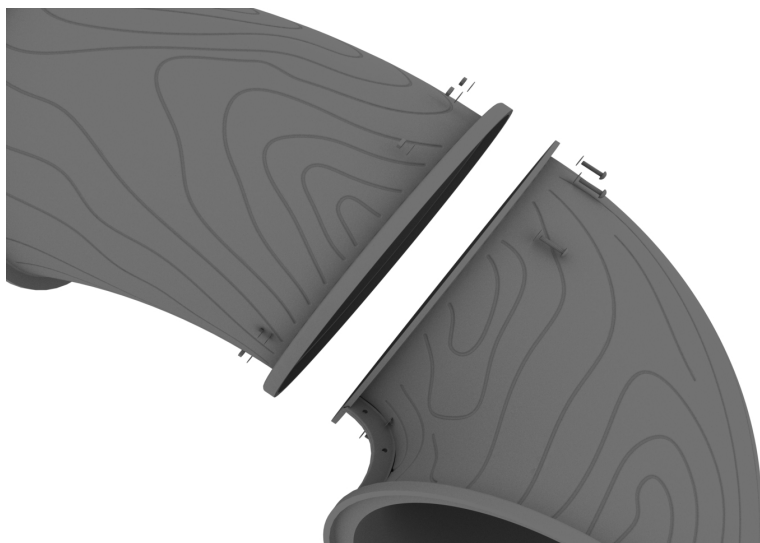
## STEP: 1

Attach the slide end mount to the bottom of the slide using four (4) M10\*20 bolts, four (4) M10 spring washers, and four (4) M10 washers.



## STEP: 2

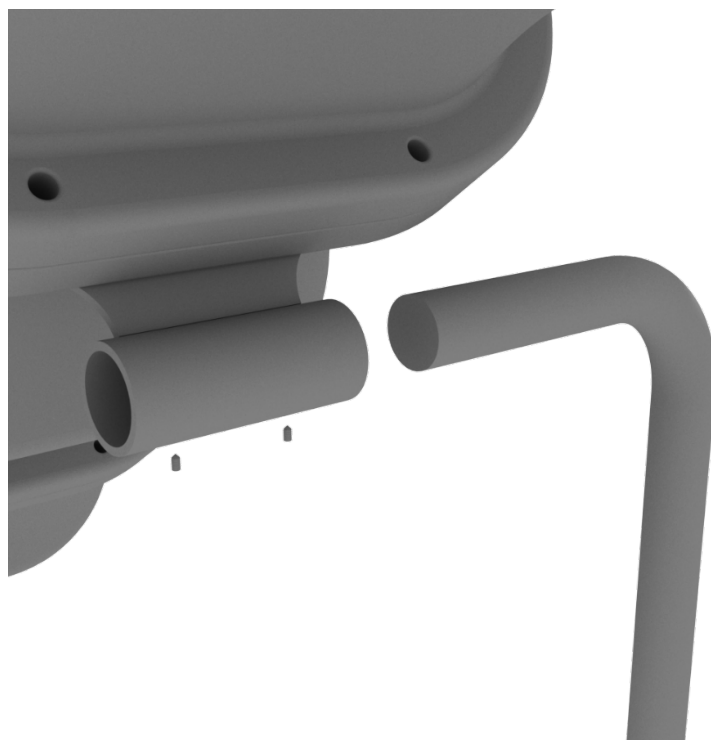
Connect the tube slide together using ten (10) M8\*30 bolts, ten (10) M8 washers, and ten (10) M8 lock nuts for each connection point.



# Treehouse Tube Slide Installation

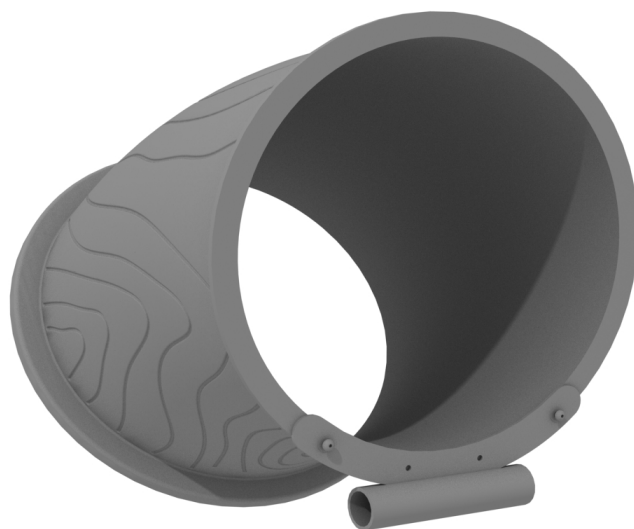
## STEP: 3

Attach the tube slide supports to the slide support brackets by inserting the support into the designated slot under the slide, and tighten the set screws using the provided Allen wrench. Repeat this process for the other slide support post.



## STEP: 4

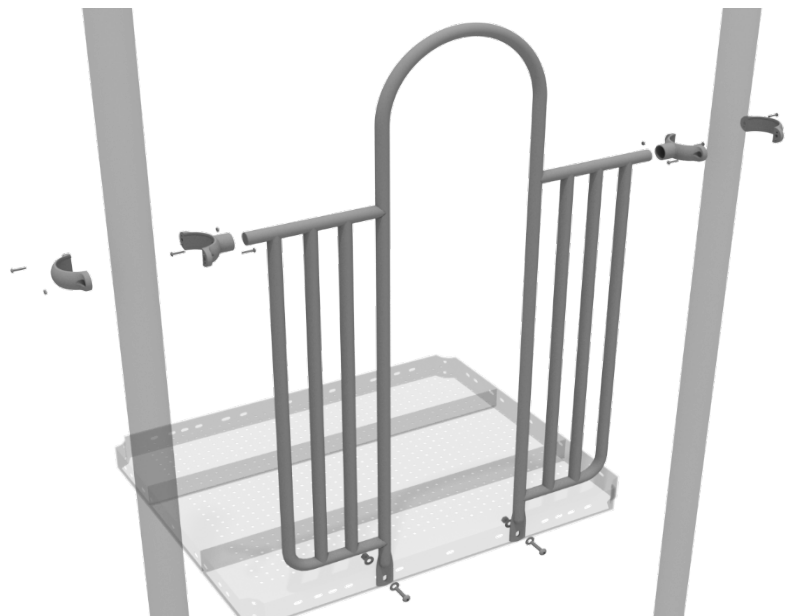
**Attention: Any hardware on pre-attached tube slide or tube bridge supports (not including set screws) are to be disposed. Use supplied bolts and appropriate lock nuts in hardware box to avoid any safety hazards or safety violations.**



## 5.0-inch 2-Clamp Arch Rail Installation

### STEP: 1

Attach each two-clamp arch rail to the designated deck by using two 5.0-inch Tube Clamps. Then use two (2) M10\*25 Bolts, four (4) M10 Washers, and two (2) M10 Lock Nuts to attach the panel to the deck.



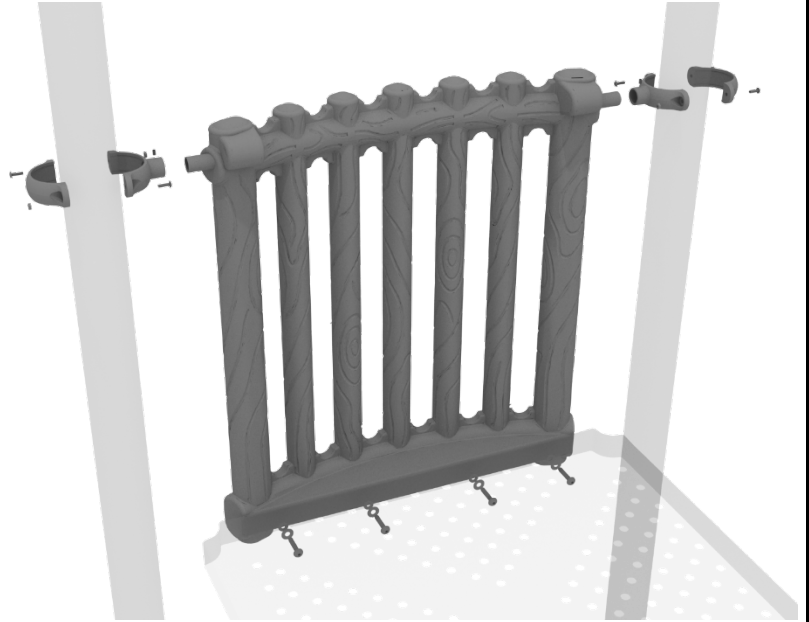
10859 Washington St. Suite  
200, Indianapolis, IN  
1-800-667-0097

Created By: Derick H  
Date: 09/15/2018

## 5.0-inch Bamboo Panel Installation

### STEP: 1

Attach the Bamboo Panel to the designated posts using two (2) tube clamps and two (2) M4\*25 Set Screws. Then, attach the bottom of the panel to the deck using four (4) M10\*20 Bolts, four (4) M10 Washers, and four (4) M10 Lock Nuts.

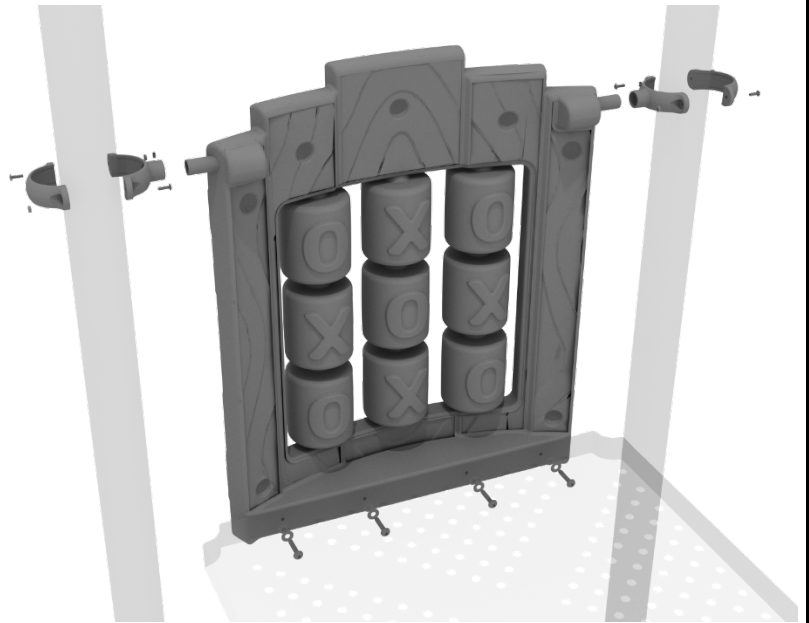




# 5.0-inch Treehouse Tic Tac Toe Panel Installation

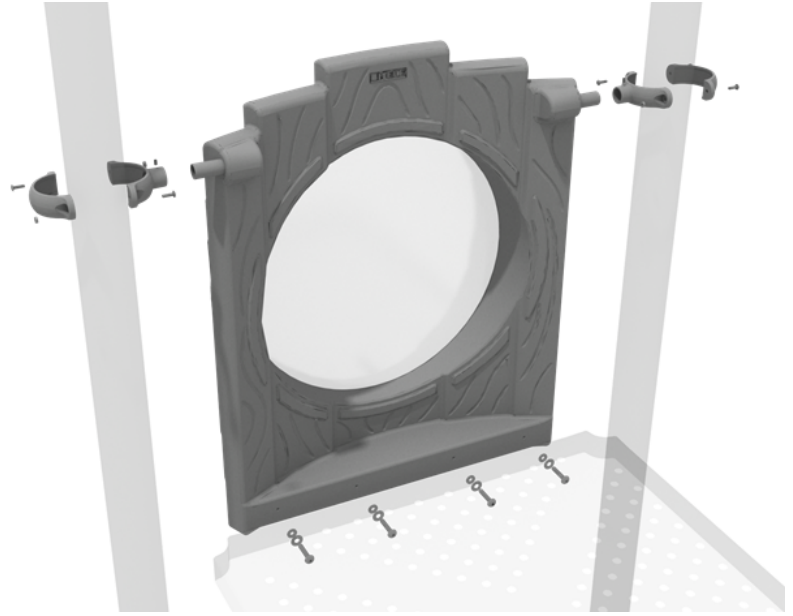
## STEP: 1

Attach the Treehouse Tic Tac Toe Panel to the designated posts using two (2) tube clamps and two (2) M4\*25 Set Screws. Then, attach the bottom of the panel to the deck using four (4) M10\*20 Bolts, four (4) M10 Washers, and four (4) M10 Lock Nuts.



# 5.0-inch Treehouse Bubble Panel Installation

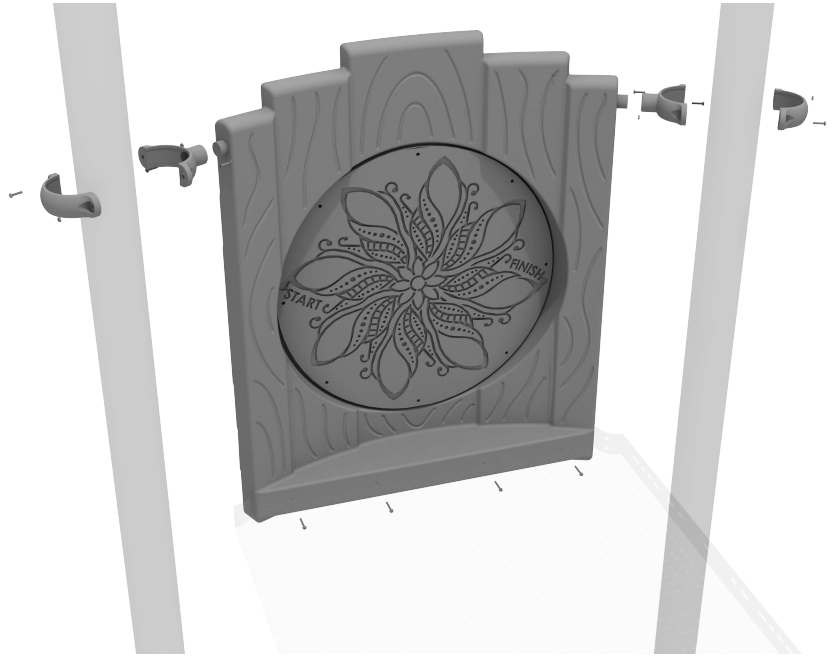
Attach the Tree house Bubble Panel to the designated posts using two (2) tube clamps and two (2) M4\*25 Set Screws. Then, attach the bottom of the panel to the deck using four (4) M10\*20 Bolts, four (4) M10 Washers, and four (4) M10 Lock Nuts.



# 5.0-inch Treehouse Finger Maze Panel Installation

## STEP: 1

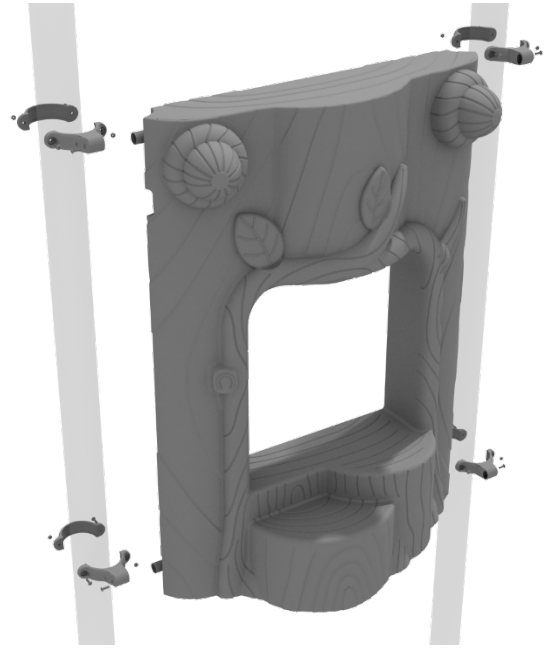
Attach the Treehouse Finger Maze Panel to the designated posts using two (2) tube clamps and two (2) M4\*25 Set Screws. Then, attach the bottom of the panel to the deck using four (4) M10\*20 Bolts, four (4) M10 Washers, and four (4) M10 Lock Nuts.



# Treehouse Stump Store Panel Installation

## STEP: 1

Attach the Treehouse Stump Store Panel using four (4) M4\*25 Set Screws for the four (4) tube clamps, clamping around the appropriate post.

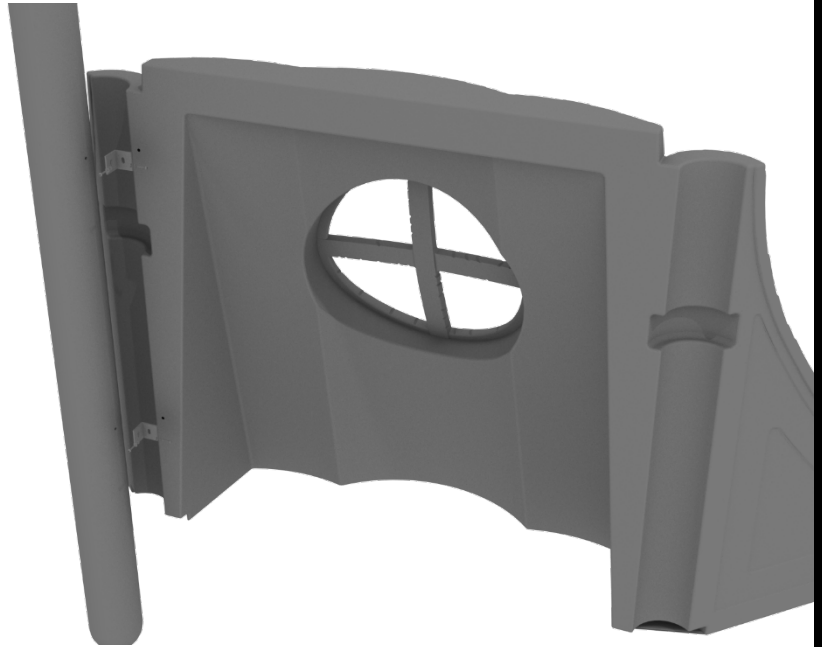


# Treehouse Stump Window Panel Installation

## STEP: 1

Align the Treehouse Stump Window Panel with the intended posts. The posts have a threaded insert that must be lined up correctly with the Treehouse Stump Window Panel.

Using the provided mounting brackets, attach the panel to the posts with eight (8) M8\*30 Bolts, eight (8) M8 Washers, and eight (8) M8 Spring Gaskets.



## STEP: 2

The Treehouse Stump Window Panel can attach to a 2<sup>nd</sup> Treehouse Stump Window Panel using one (1) M8\*45 Bolt, and one (1) M10\*45 Inner Hex Nut.

This step does not apply in cases where there is only 1 Treehouse Stump Window Panel.

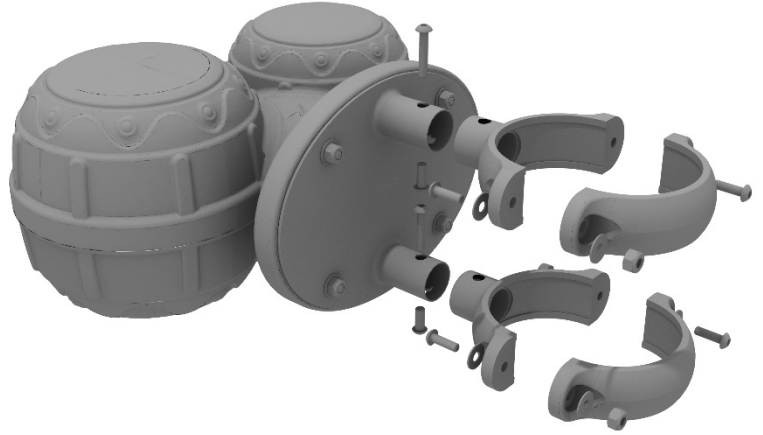




# Bongos Installation

## STEP: 1

Detach half of the tube clamps connected to the Bongos, and re-attach the clamp around the desired support post. Recommended install height is 20 to 36 inches above surfacing depending on age range.



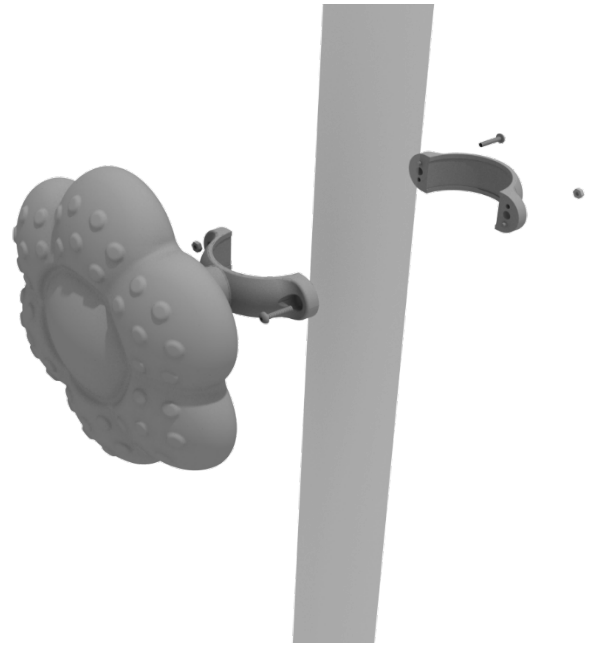
# Rain Wheel Installation

Detach half of the tube clamp connected to the Rain Wheel, and re-attach the clamp around the support post, as shown in the picture.

Recommended install height is 20 to 36 inches above surfacing depending on age range.

*We recommend using Thread-locking fluid on bolts connecting Rain wheel to clamp to prevent hardware from loosening over time.*

(Thread-locker not supplied)

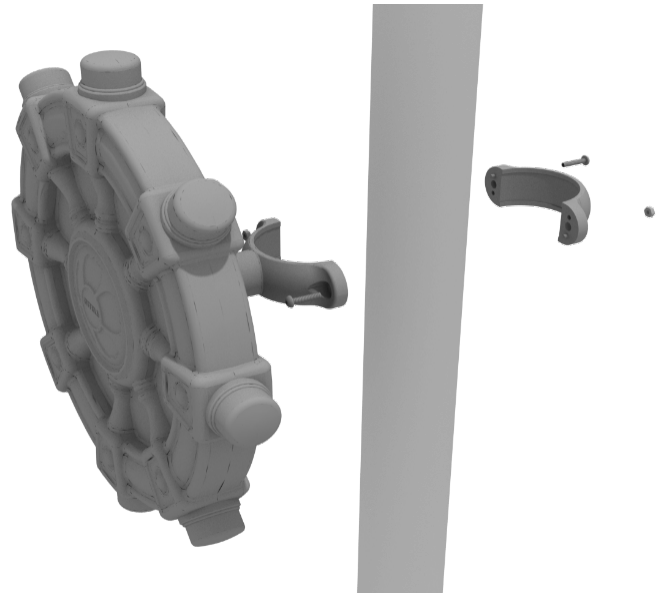


# Ships Wheel Installation

Detach half of the tube clamp connected to the Ships Wheel, and re-attach the clamp around the support post, as shown in the picture. Recommended install height is 20 to 36 inches above surfacing depending on age range.

*We recommend using Thread-locking fluid on bolts connecting Ship's wheel to clamp to prevent hardware from loosening over time.*

(Thread-locker not supplied)

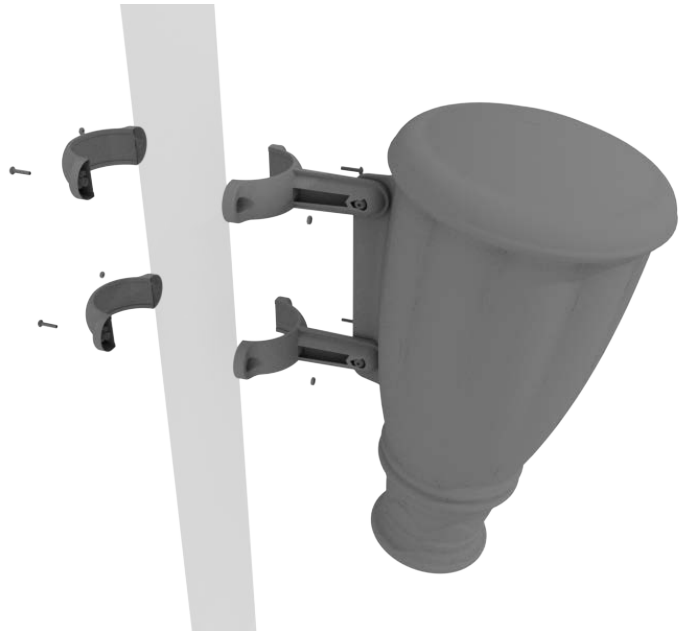


# Single Drum Installation

Detach half of the tube clamps connected to the Single Drum, and re-attach the clamps around the support post, as shown in the image. Recommended install height is 20 to 36 inches above surfacing depending on age range.

*We recommend using Thread-locking fluid on bolts connecting Single Drum to clamp to prevent hardware from loosening over time.*

(Thread-locker not supplied)



# Monkey Topper Installation

## STEP: 1

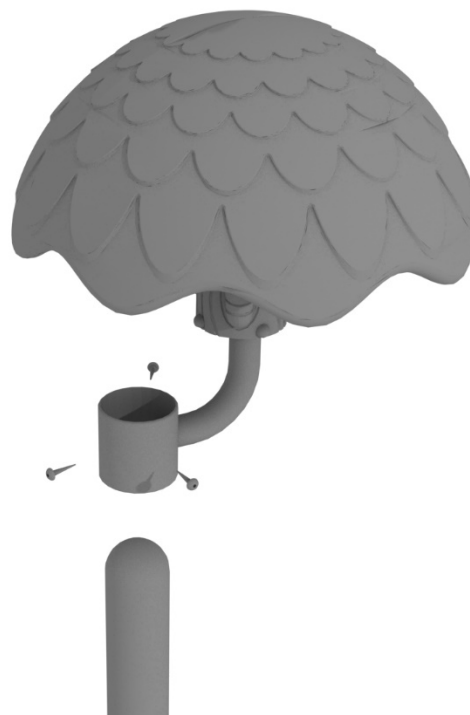
The hardware and clamps come pre-attached to the Monkey Topper. To install undo the bolts holding the two halves of the Tube Clamps together, then place around the desired post and re-assemble the Tube Clamp.



# Tree Topper Installation

## STEP: 1

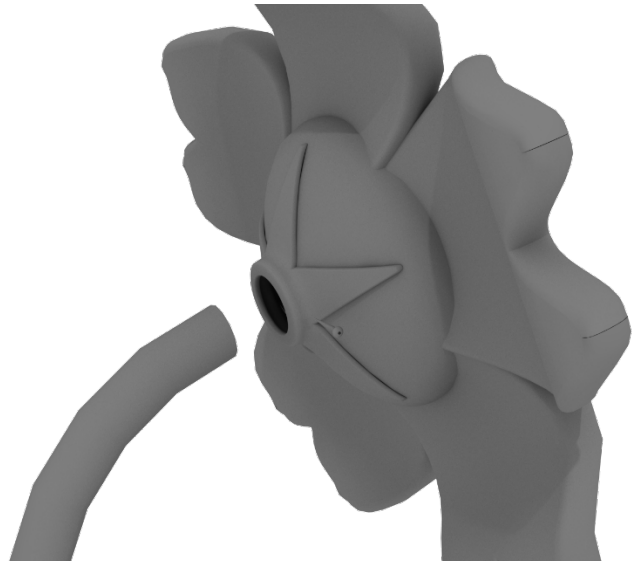
Place the Tree Topper onto the desired post. Use three (3) M8\*45 Set Screws to attach the Pine Tree Topper to the post.



# Palm Flower Face Topper Installation

## STEP: 1

Place the Flower Face Topper onto the provided post. Use three (3) M8\*35 set screws and three (3) M\*8 Washers to attach the Flower Face Topper to the post.

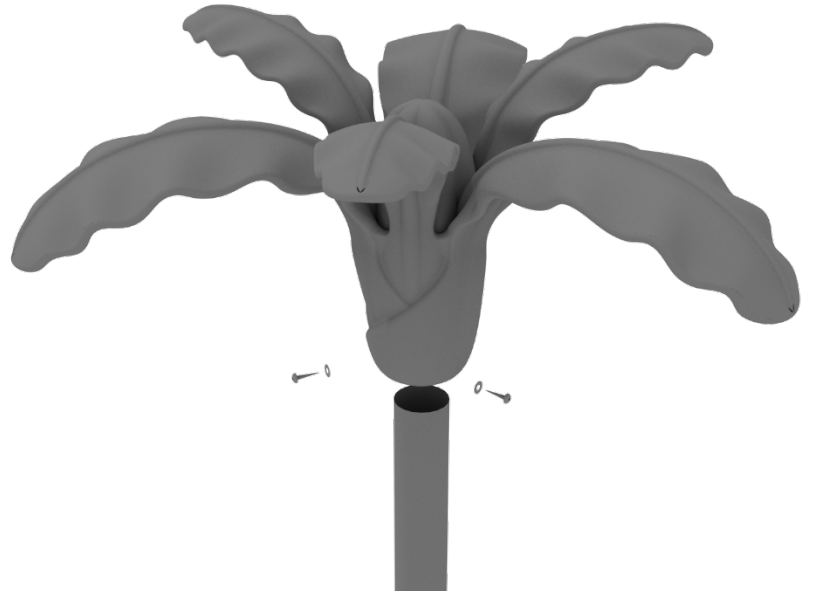




# Palm Tree Topper Installation

## STEP: 1

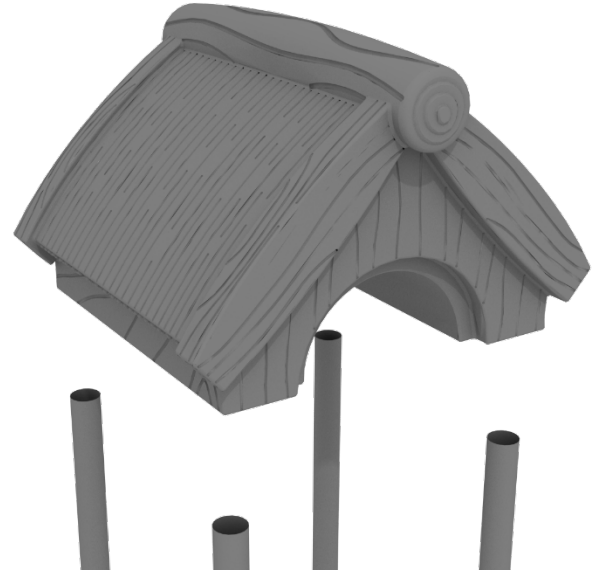
Place the Palm Tree Topper onto the provided post. Use three (3) M8\*50 set screws and three (3) M\*8 Washers to attach the Flower Face Topper to the post.



# Treehouse Gable Roof Installation

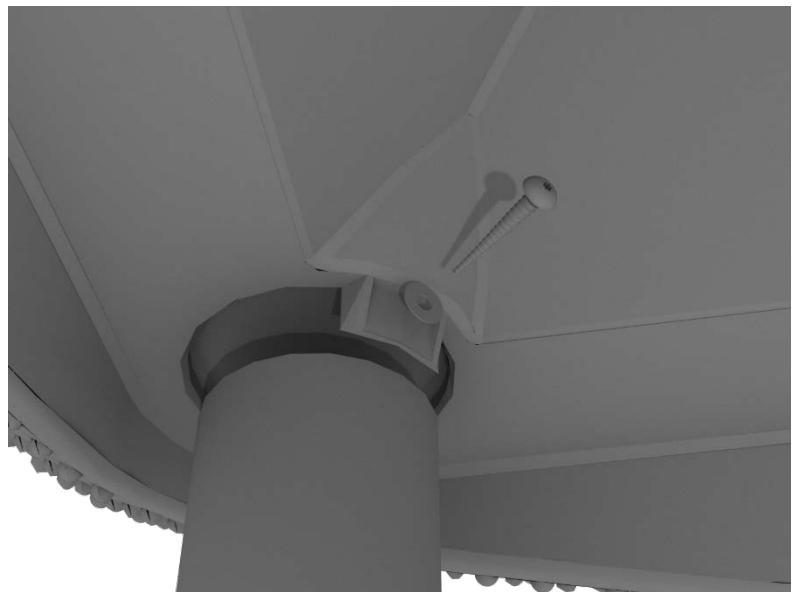
## STEP: 1

Place the Gable Roof on to the top of the posts of the appropriate deck.



## STEP: 1

Install the Gable Roof by using four (4) M4\*50 Self Tapping screws, and four (4) M8 Washers.



# Treehouse Club House Roof Installation

## STEP: 1

Place the Club House roof on to the top of the posts of the appropriate deck.



## STEP: 1

Install the Club House roof by using four (4) M4\*50 Self Tapping screws, and four (4) M8 Washers.

