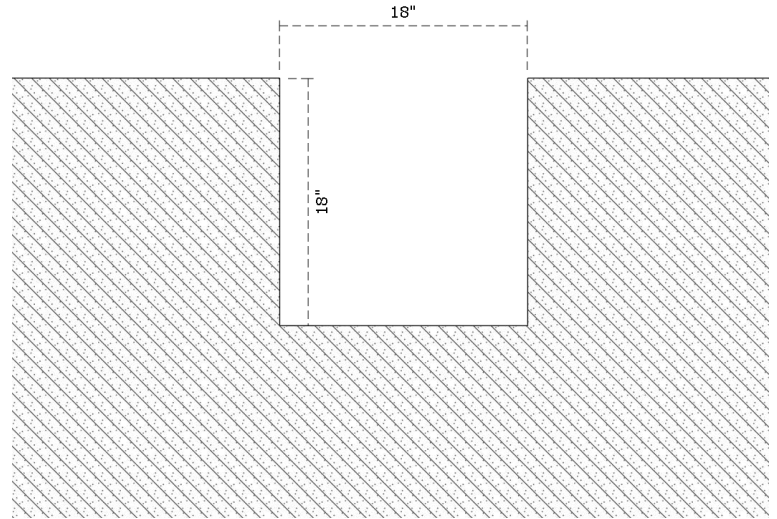


# Standing Drum Quintet Installation

## STEP: 1

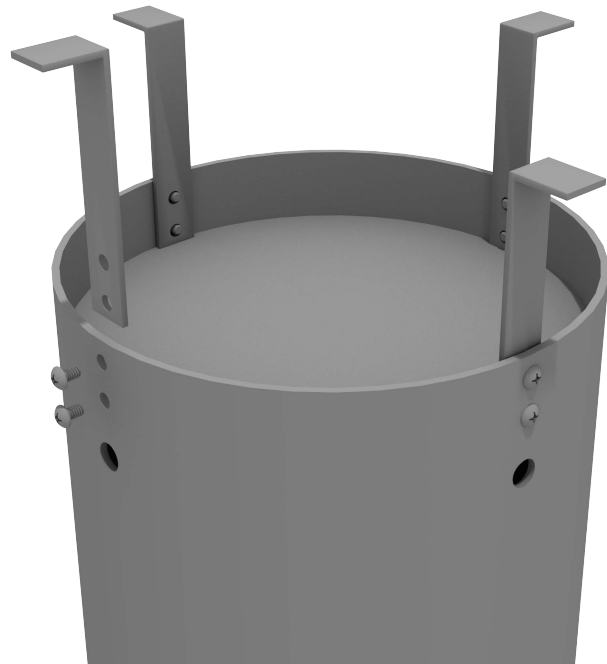
Dig footer (18" x 18" x 18") and fill with concrete. Allow concrete to begin to set before sinking L-Bracket into the mixture.



## STEP: 2

Attach the L-brackets to the standing drum using the given hardware. Once each L-bracket is attached the drum is ready to be set into the concrete footer.

Repeat this step for each drum for the Standing Drum Quintet.



# Standing Drum Quintet Installation

## STEP: 3

Once the brackets are set, let concrete cure for at least 48 hours.  
(Follow concrete manufacturer's recommendations.) It may be necessary to retighten the screws at this time.

