

UP268 ACCESSIBLE STRENGTH ZONE

Parts List		
DESCRIPTION	QTY	PART NUMBER
UPRIGHT 1	2	15CHUH
UPRIGHT 2	1	15CHUJ
UPRIGHT 3	1	15CHUK
UPRIGHT 4	2	15CHUN
STRENGTH ZONE BASE	2	408033
STRENGTH ZONE HAND RAIL	4	408039
STRENGTH ZONE LADDER	1	408042
STRENGTH ZONE PLATFORM	2	408043
STRENGTH ZONE ACCESSIBLE LADDER	1	408047
HARDWARE COMPLETE	1	408050
3/8" x 1 1/4" P.B.H.C.S. w/PATCH	32	812051
3/8" x 1" P.B.H.C.S. w/PATCH	4	812050
3/8" x 2" P.B.H.C.S. w/PATCH	22	812055
3/8" LOCK WASHER	58	817334
3/8" FLAT WASHER	32	817410
3/8" BARREL NUT	26	804804
1/2" ANCHOR ROD	6	135038
STRENGTH ZONE USAGE WARNING LABEL	1	408104

Unless Otherwise Specified, All Units of Measure are Each

Items listed below Hardware Complete line are included with Hardware Complete Number

Warning: During Installation, Hardware And Small Parts Are Choking Hazards For Young Children. Store Unused Parts Appropriately Until Assembly Is Completed. Once Assembly Is Completed, Remove Any Unused Parts From The Play Environment And Dispose/Save Them In A Secure Location. Any bolt end protruding more than two full threads beyond the face of the nut causes risk of clothing entanglement.

Promptly cut-off flush, file smooth, and treat to prevent corrosion.

Note: Peen Tee-Nuts and Flatwashers to match radius of pipe after assembly is complete.

Note: Loctite (supplied by others) should be used on any non-patch hardware.

UP268 ACCESSIBLE STRENGTH ZONE

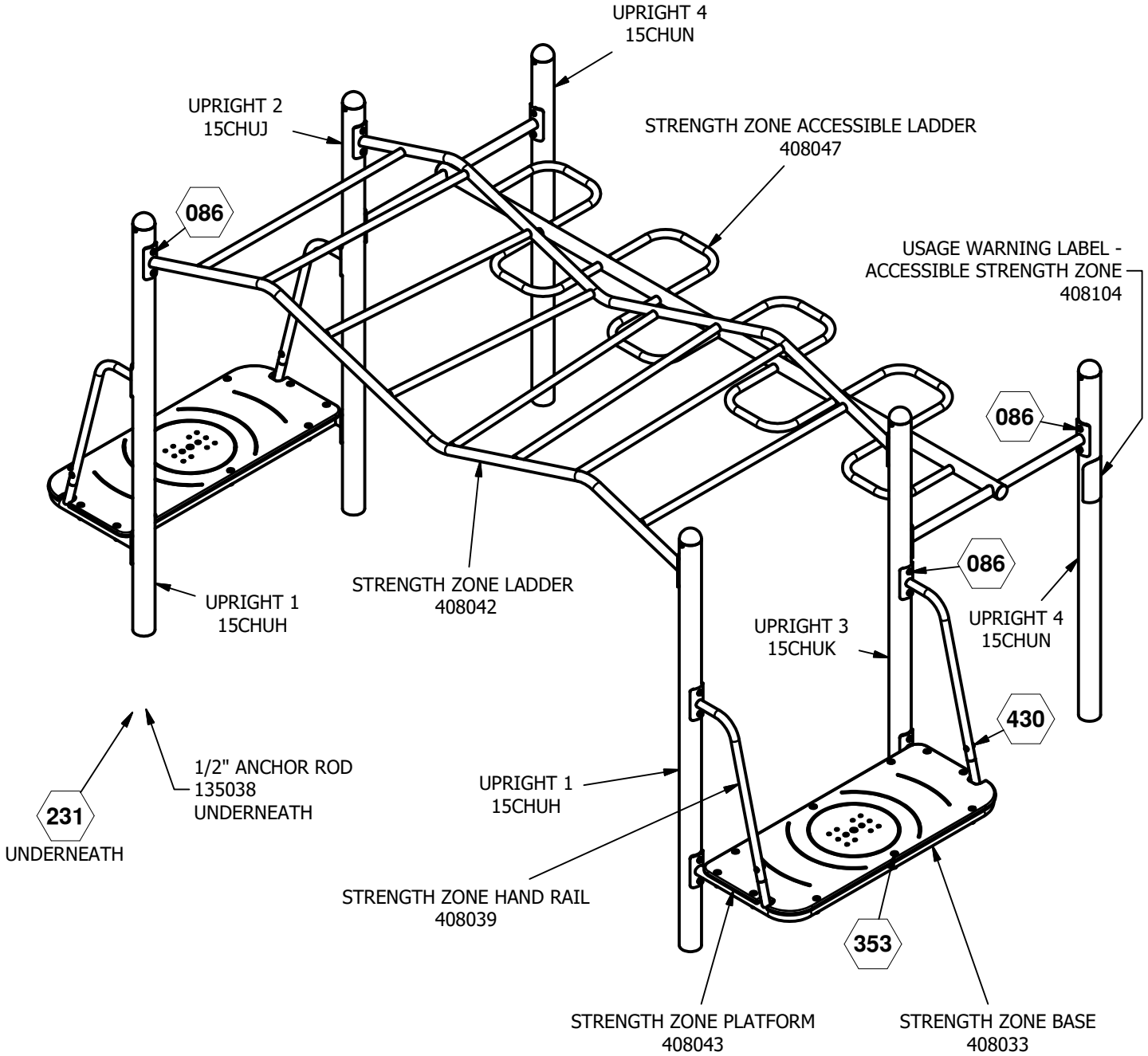
INSTALLATION INSTRUCTIONS:

1. Determine where to place the Accessible Strength Zone. Refer to order Top View.
2. Dig footing holes. Refer to Plan and Elevation Views.
3. Attach the Strength Zone Ladder to Uprights 2, 3, and 4. See Detail 086. Refer to Finished Assembly View for placement.
4. Attach Strength Zone Accessible Ladder to Uprights 1, 2 and 3. See Detail 086. Refer to Finished Assembly View for placement.
5. Attach Strength Zone Platform to Strength Zone Base. See Detail 353.
6. Attach Strength Zone Hand Rail to assembled Strength Zone Base. See Detail 430.
7. Attach assembled Strength Zone platform to Uprights 2, 3, and 4. See Detail 086. Refer to Finished Assembly View for placement.
8. Place assembled Accessible Strength Zone into footing holes. Refer to Finished Assembly views.
9. Attach the Accessible Strength Zone Usage Warning Label to the Upright. Refer to Finished Assembly view for placement.
10. When the Accessible Strength Zone is plumb and level, tighten all fasteners and pour concrete footings within 4" to the top and taper away from supports to allow drainage. Allow to cure at least 48 hours before use.

MAINTENANCE PROCEDURE:

Periodically check hardware for tightness, and tighten as necessary. Always check all parts for breakage or wear, and immediately put equipment out of service until any faulty parts found are repaired or replaced. Also check all metal parts for rust, paint loss and touch-up if necessary with paint. Check welded areas and verify integrity. Check periodically resilient surfacing for appropriate depth and remove extraneous materials that could cause injury, infection, or disease. Maintain detailed installation, inspection, maintenance, and repair records for each public-use playground equipment.

UP268 ACCESSIBLE STRENGTH ZONE



= INSTALLATION DETAIL

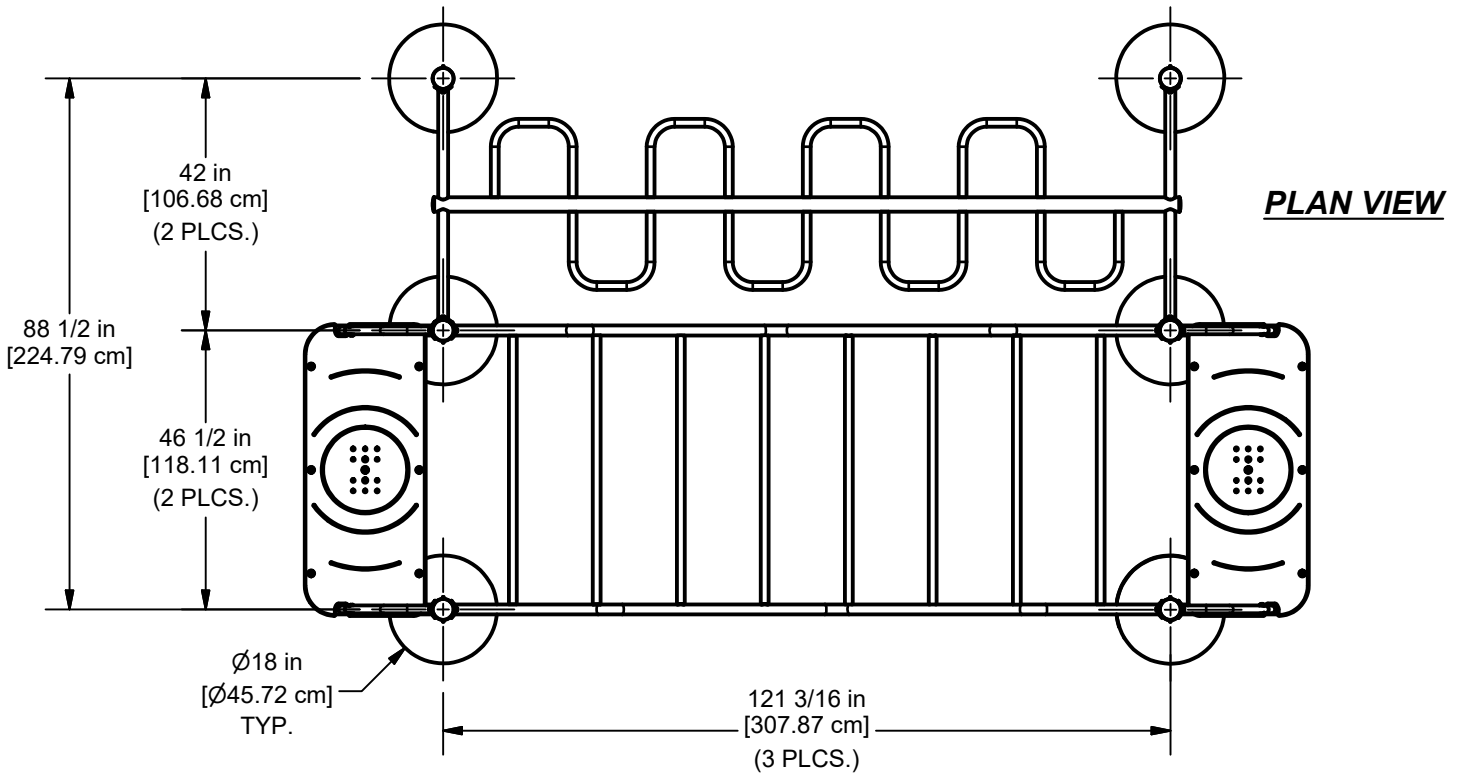
Issued/Revised: 4/26/2024

FINISHED ASSEMBLY

ultra site

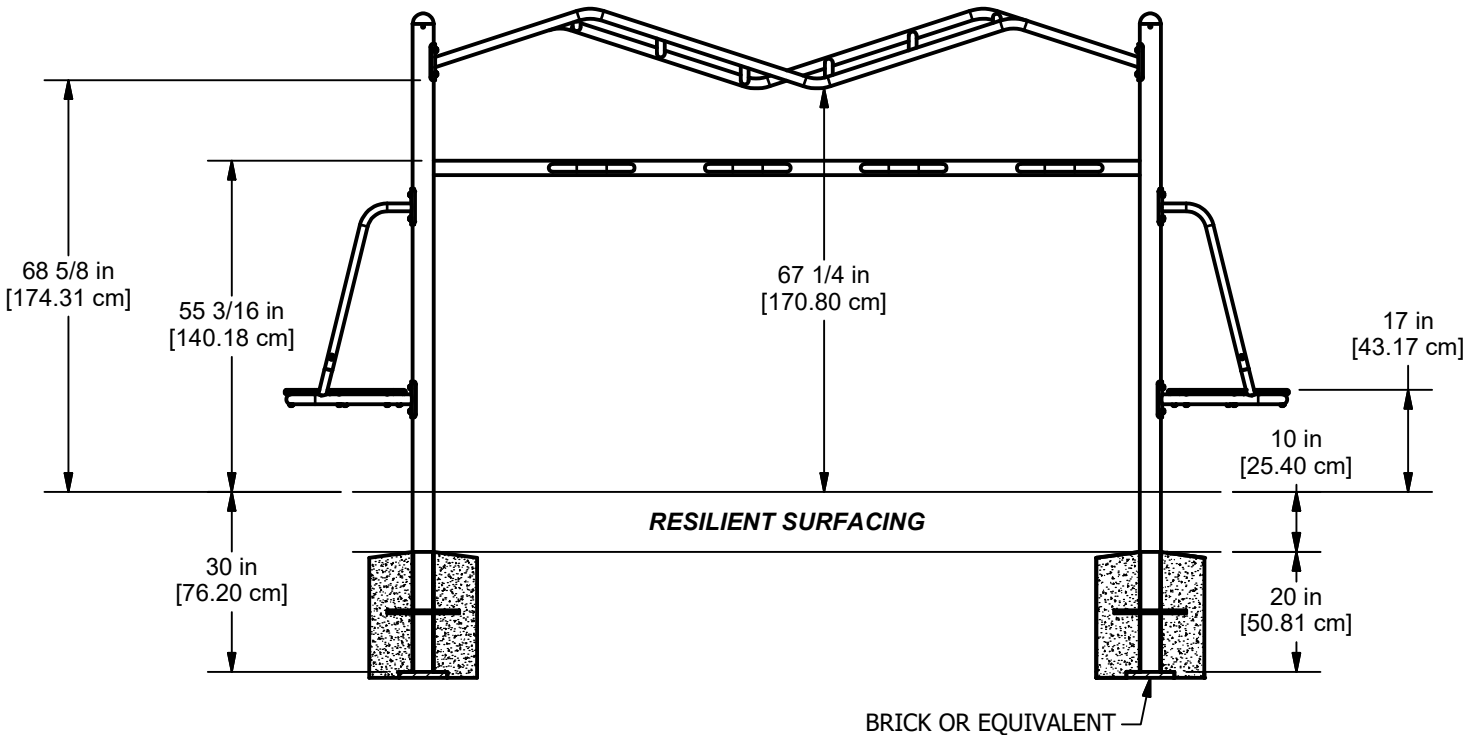
A PLAYCORE Company

UP268 ACCESSIBLE STRENGTH ZONE



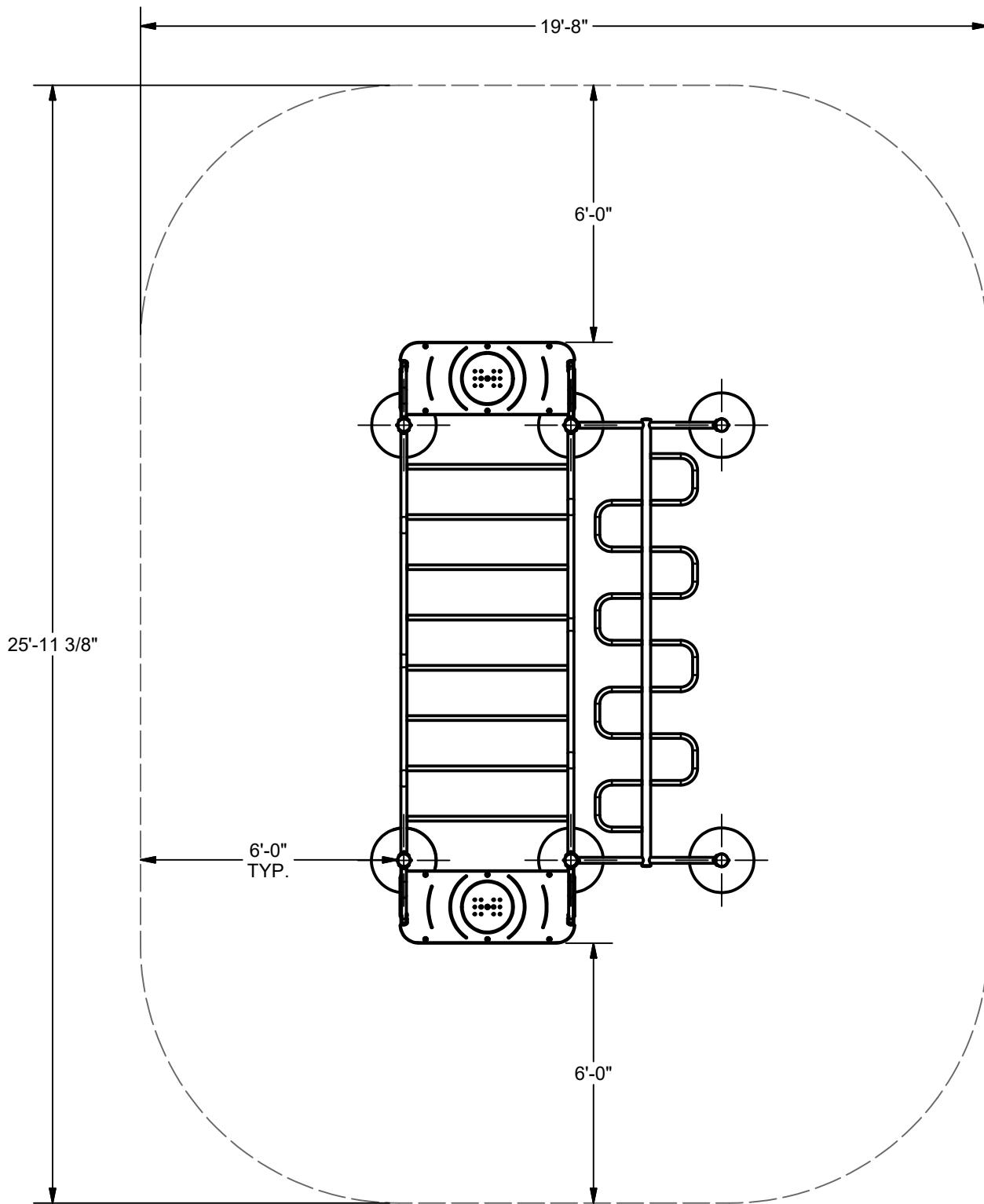
CONCRETE REQUIRED

0.654 CUBIC YARDS
 0.498 [CUBIC METERS]



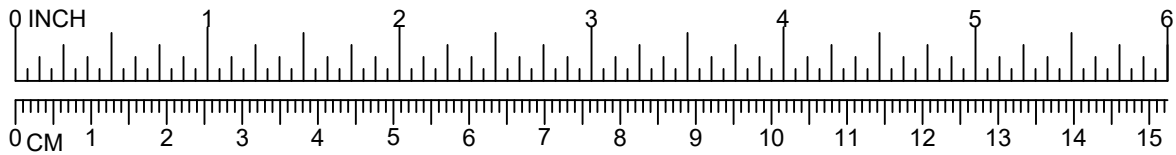
Issued/Revised: 4/26/2024

UP268 ACCESSIBLE STRENGTH ZONE USE ZONE

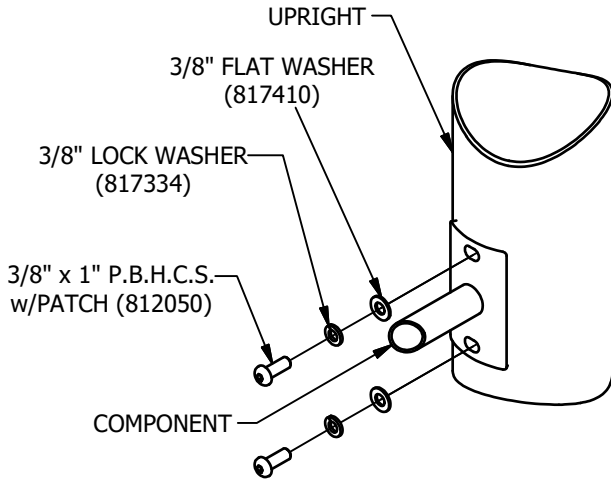


USE ZONE

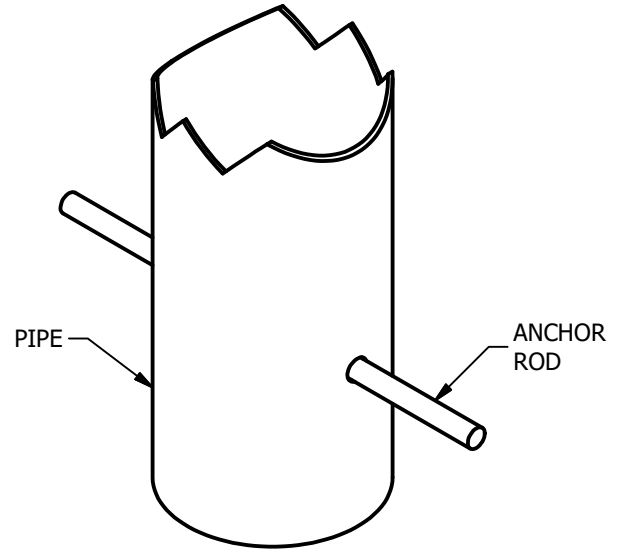
Issued/Revised: 4/26/2024



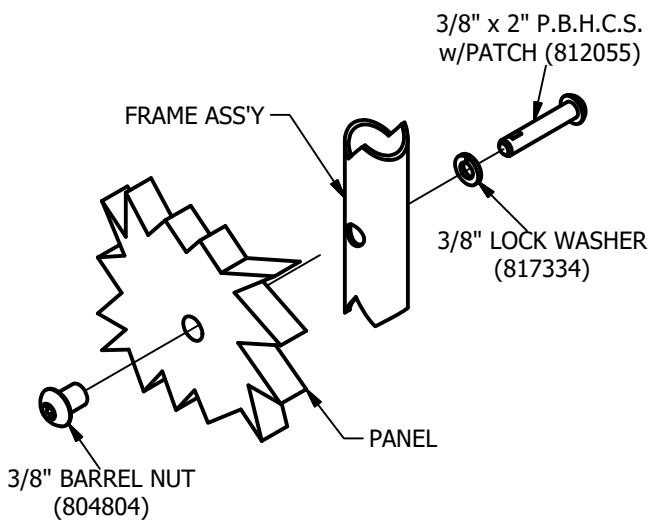
UP268 ACCESSIBLE STRENGTH ZONE



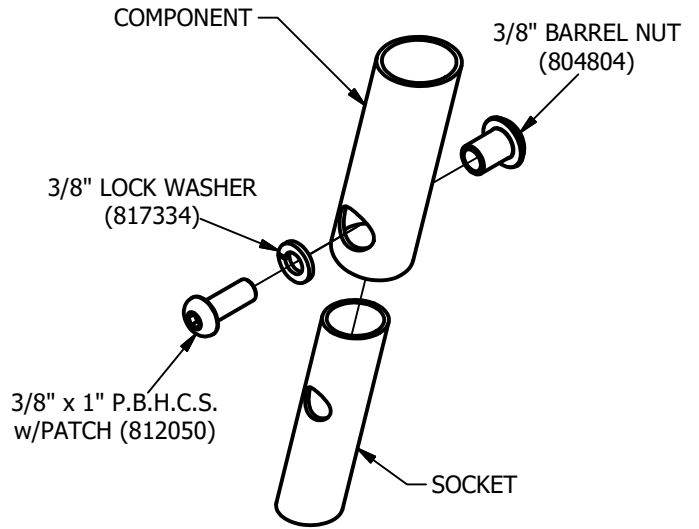
086



231



353



430