

UP272 CHALLENGE ZONE

Parts List		
DESCRIPTION	QTY	PART NUMBER
USAGE/WARNING LABEL SIGN POST	1	212030
CHALLENGE ZONE FOOT	9	408082
CHALLENGE ZONE FRAME	3	408084
CHALLENGE ZONE PANEL 1	1	408087
CHALLENGE ZONE PANEL 2	1	408088
CHALLENGE ZONE PANEL 3	1	408089
HARDWARE COMPLETE	1	408091
3/8" x 3/4" P.B.H.C.S. w/PATCH	18	812052
3/8" x 2 1/4" P.B.H.C.S. w/PATCH	18	812056
3/8" LOCK WASHER	36	817334
3/8" FLAT WASHER (1 1/4" O.D.)	18	817424
3/8" BARREL NUT	36	804804
1/2" ANCHOR ROD	9	135038
USAGE WARNING LABEL - CHALLENGE ZONE	1	408090

Unless Otherwise Specified, All Units of Measure are Each

Items listed below Hardware Complete line are included with Hardware Complete Number

Warning: During Installation, Hardware And Small Parts Are Choking Hazards For Young Children. Store Unused Parts Appropriately Until Assembly Is Completed. Once Assembly Is Completed, Remove Any Unused Parts From The Play Environment And Dispose/Save Them In A Secure Location. Any bolt end protruding more than two full threads beyond the face of the nut causes risk of clothing entanglement.

Promptly cut-off flush, file smooth, and treat to prevent corrosion.

Note: Peen Tee-Nuts and Flatwashers to match radius of pipe after assembly is complete.

Note: Loctite (supplied by others) should be used on any non-patch hardware.

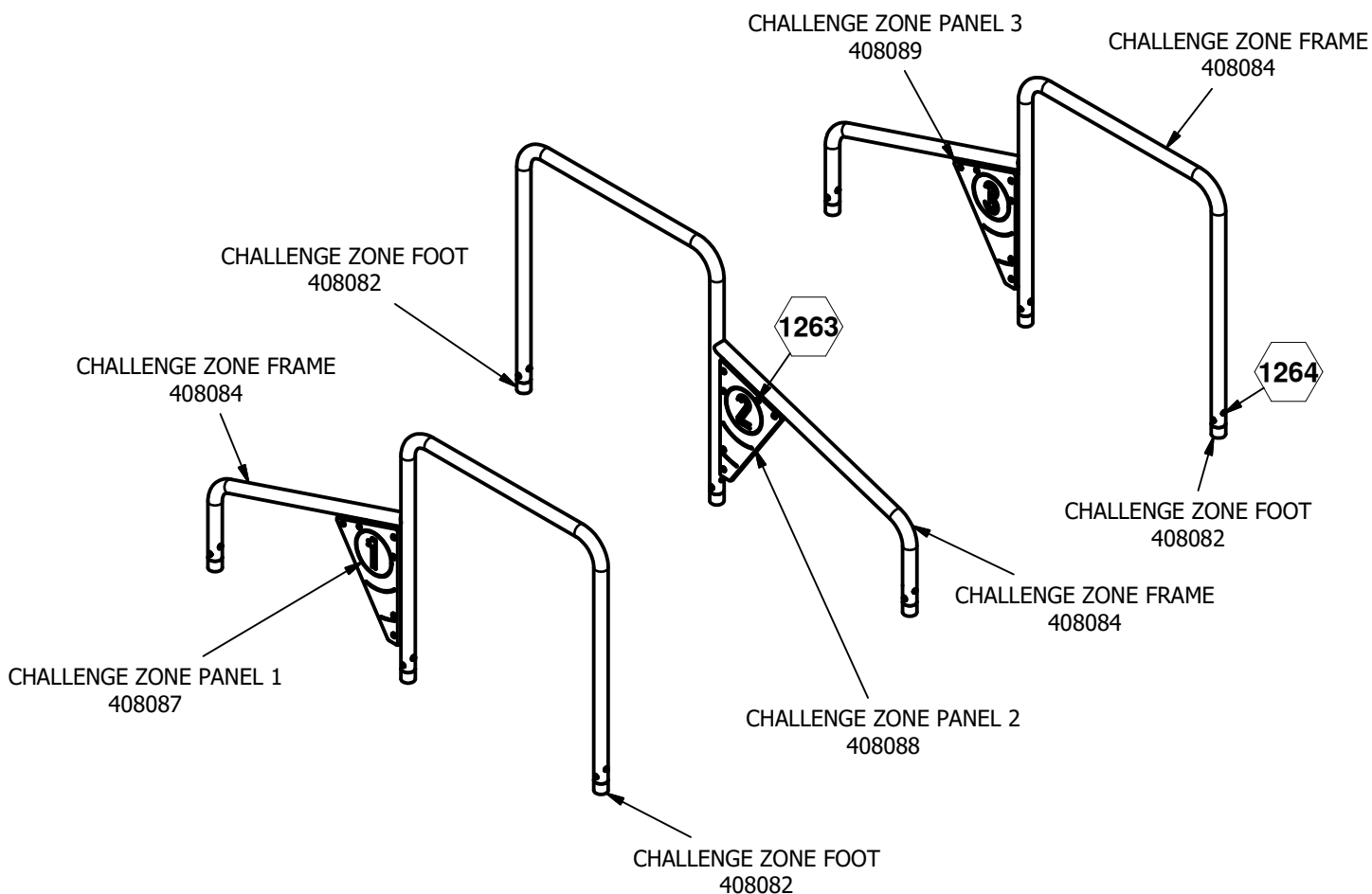
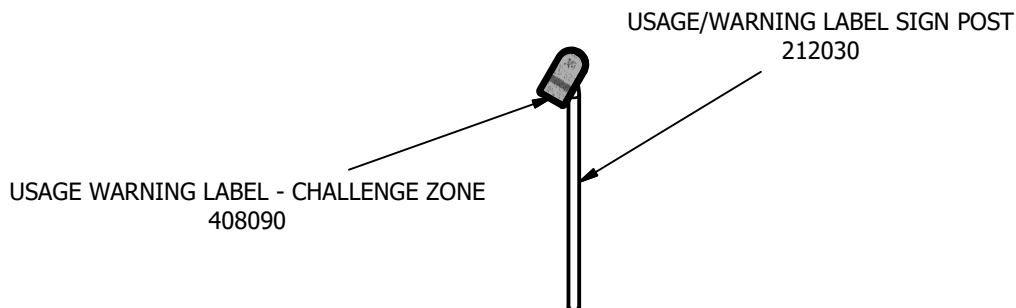
INSTALLATION INSTRUCTIONS:

1. Determine where to place the Challenge Zone. Refer to order Top View.
2. Dig footing holes. Refer to Plan and Elevation Views.
3. Attach the Usage Warning Label - Challenge Zone to the Usage/Warning Label Sign Post and place in footing hole. Refer to Finished Assembly View and Plan View.
4. Attach Challenge Zone Feet to the Challenge Zone Frames. See Detail 1264.
5. Attach the Challenge Zone Panels to the Challenge Zone Frames. See Detail 1263.
6. Place assembled Challenge Zone into footing holes. Refer to Finished Assembly views.
7. When the Challenge Zone is plumb and level, tighten all fasteners and pour concrete footings within 4" to the top and taper away from supports to allow drainage. Allow to cure at least 48 hours before use.

MAINTENANCE PROCEDURE:

Periodically check hardware for tightness, and tighten as necessary. Always check all parts for breakage or wear, and immediately put equipment out of service until any faulty parts found are repaired or replaced. Also check all metal parts for rust, paint loss and touch-up if necessary with paint. Check welded areas and verify integrity. Check periodically resilient surfacing for appropriate depth and remove extraneous materials that could cause injury, infection, or disease. Maintain detailed installation, inspection, maintenance, and repair records for each public-use playground equipment.

UP272 CHALLENGE ZONE



 = INSTALLATION DETAIL

Issued/Revised: 4/25/2024

800.458.5872

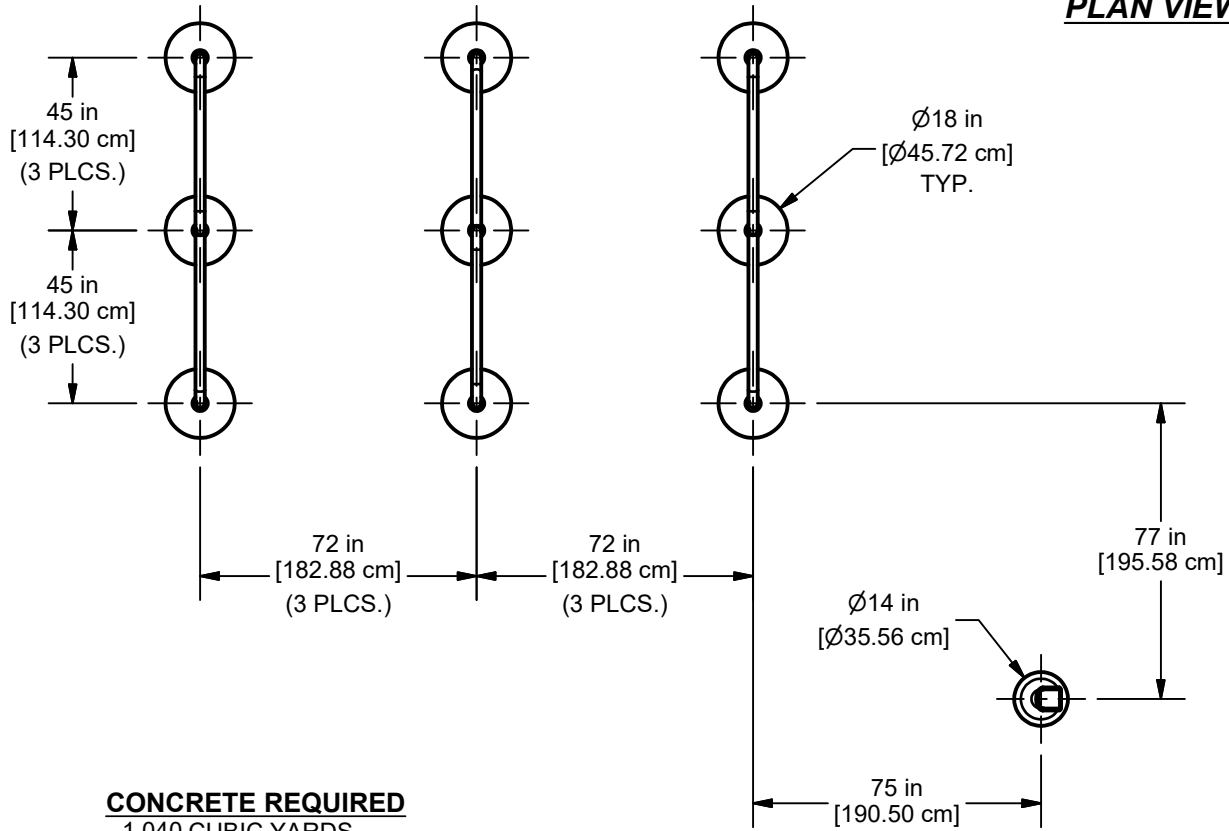
FINISHED ASSEMBLY

ultra site
A PLAYCORE Company

actionfitoutdoors.com

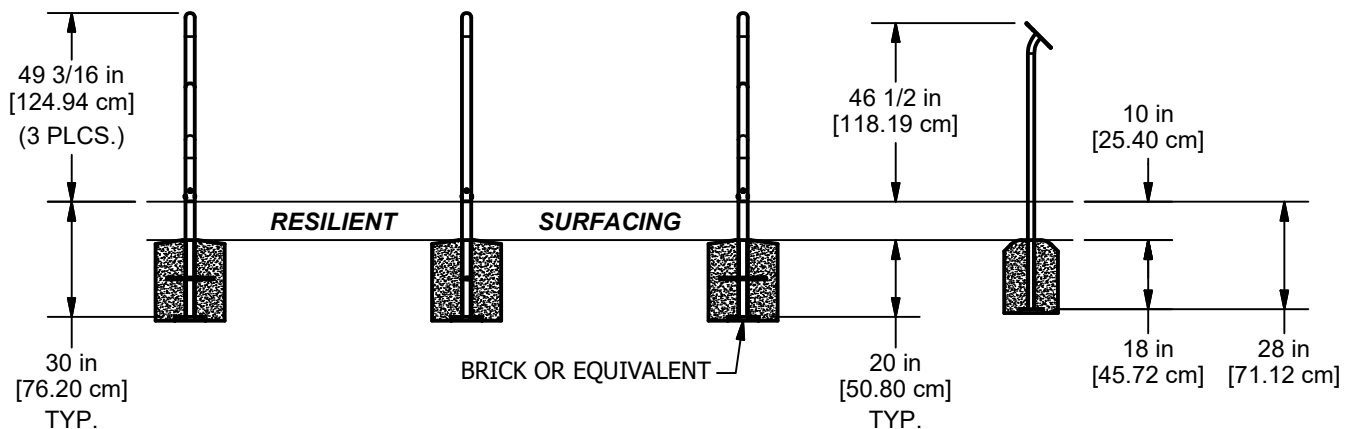
UP272 CHALLENGE ZONE

PLAN VIEW



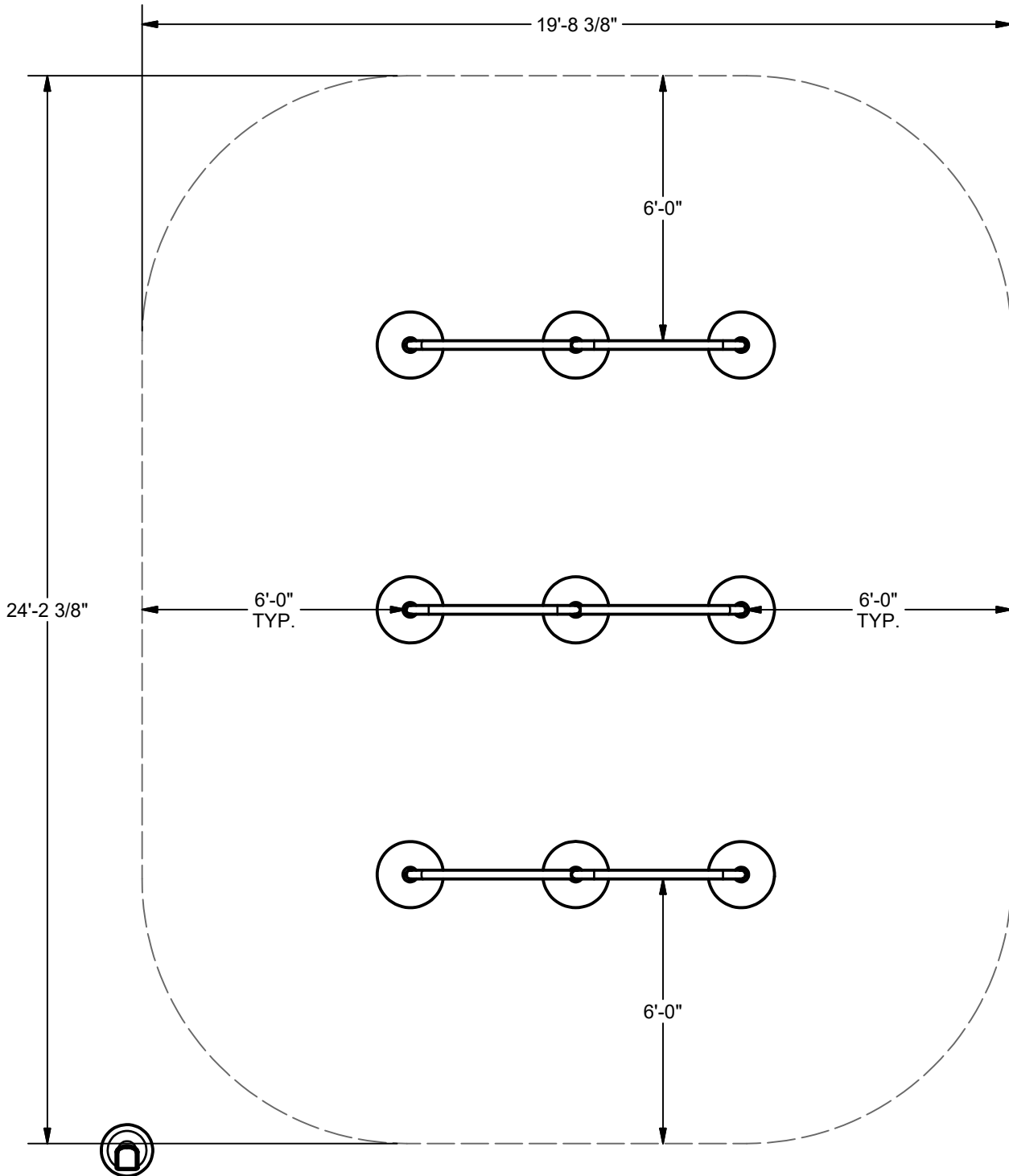
CONCRETE REQUIRED
 1.040 CUBIC YARDS
 0.792 [CUBIC METERS]

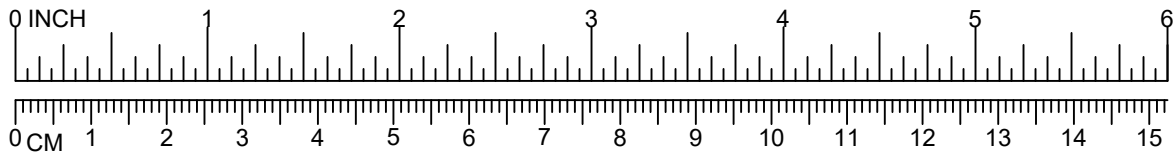
ELEVATION VIEW



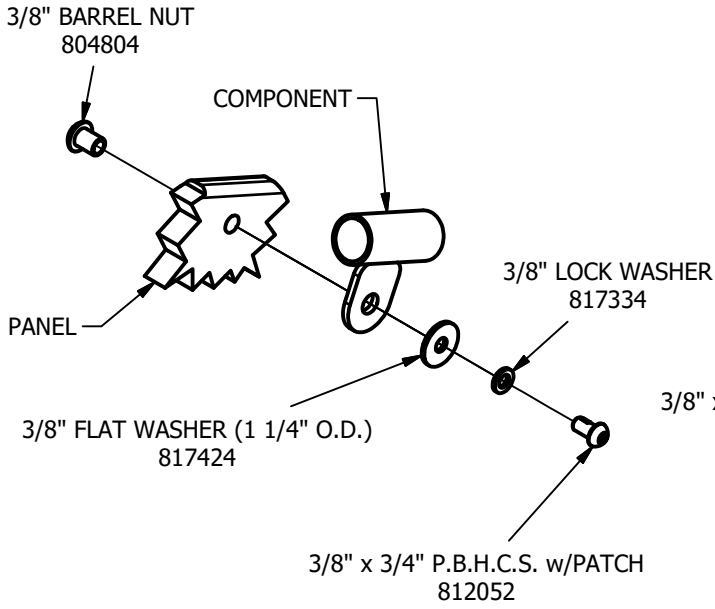
Issued/Revised: 4/25/2024

UP272 CHALLENGE ZONE USE ZONE

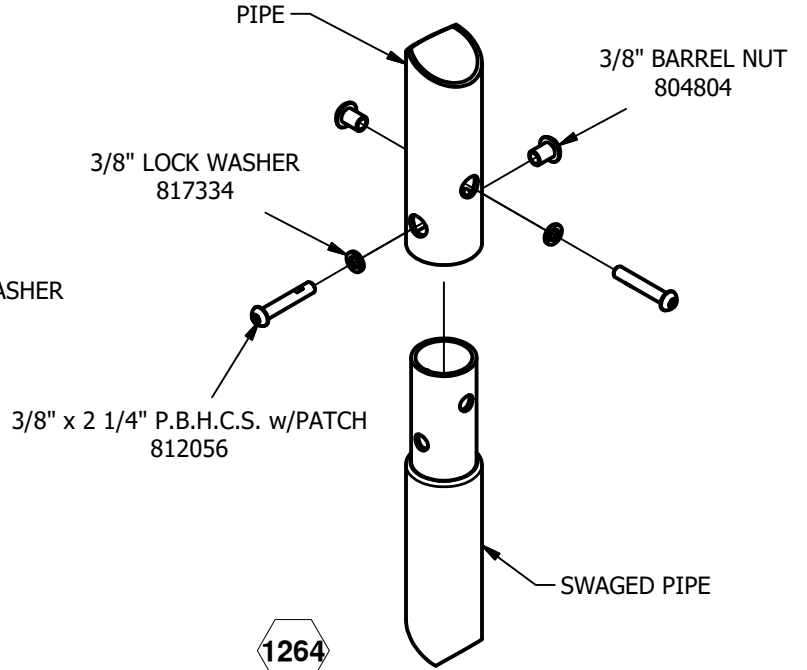




UP272 CHALLENGE ZONE



1263



1264