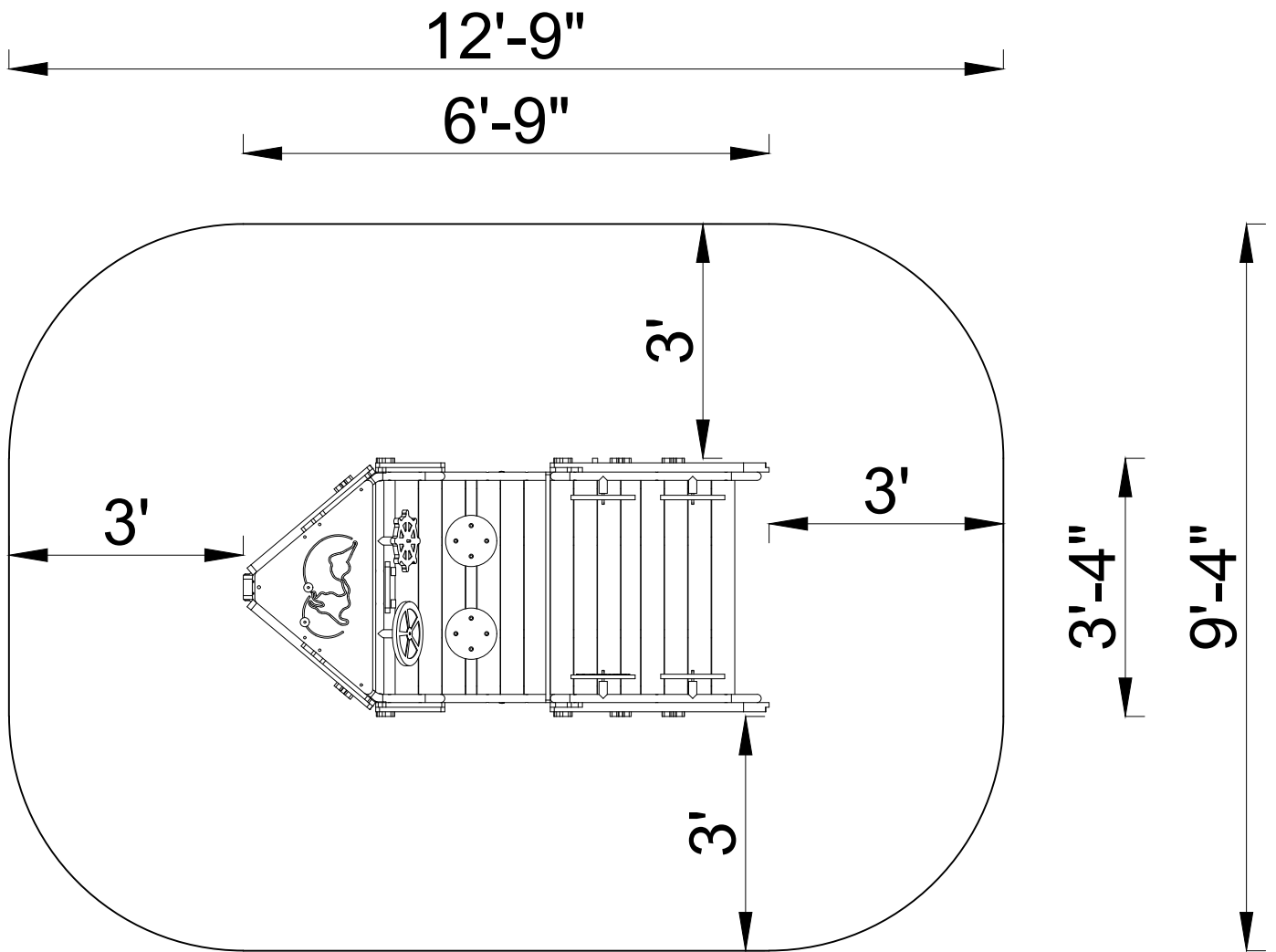
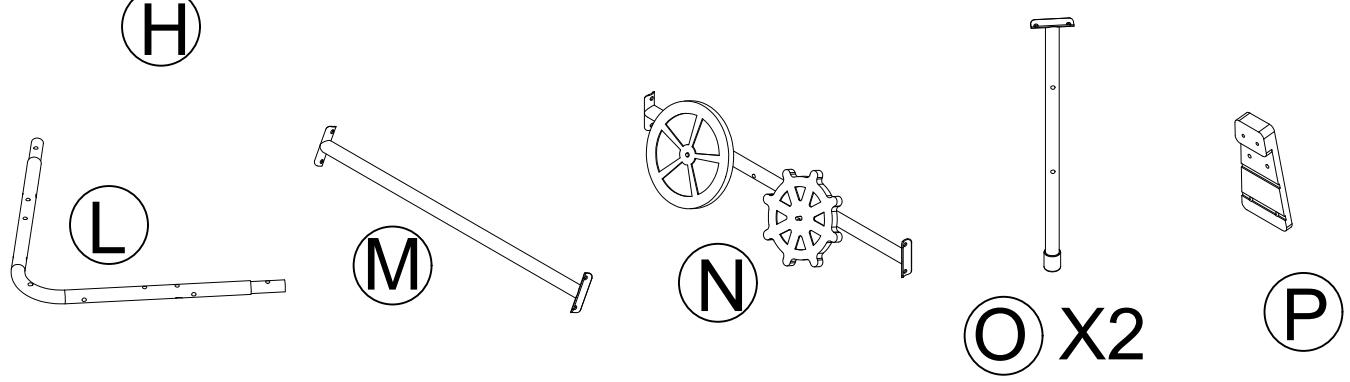
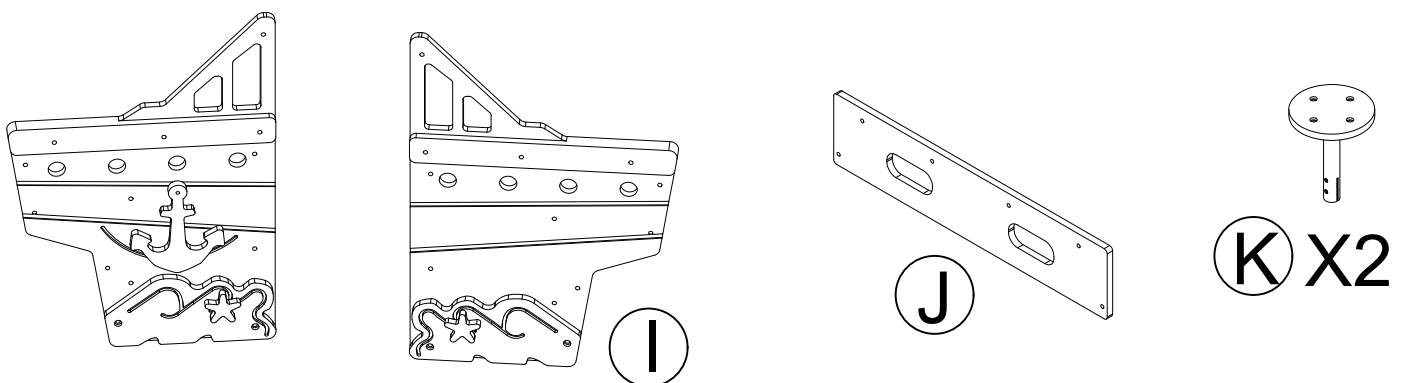
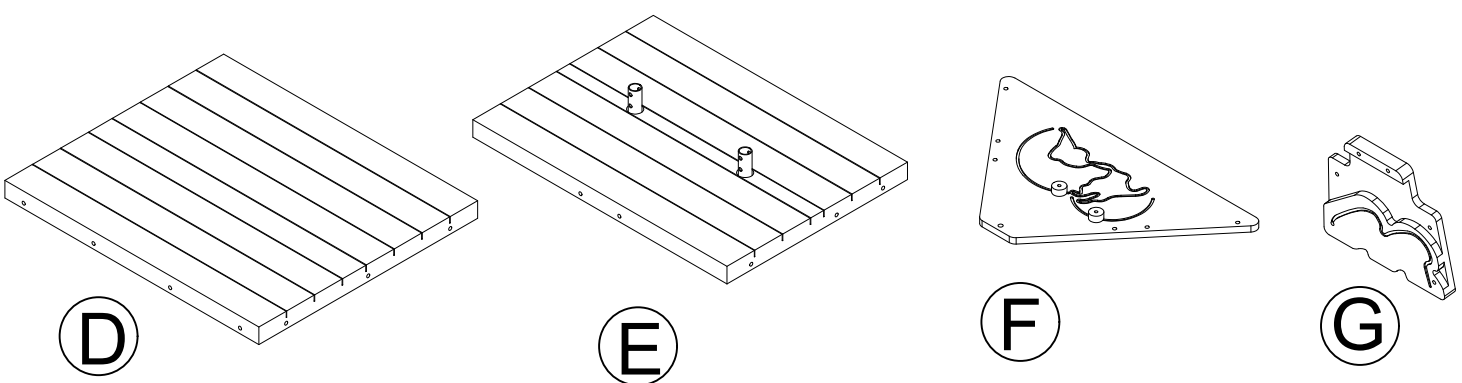
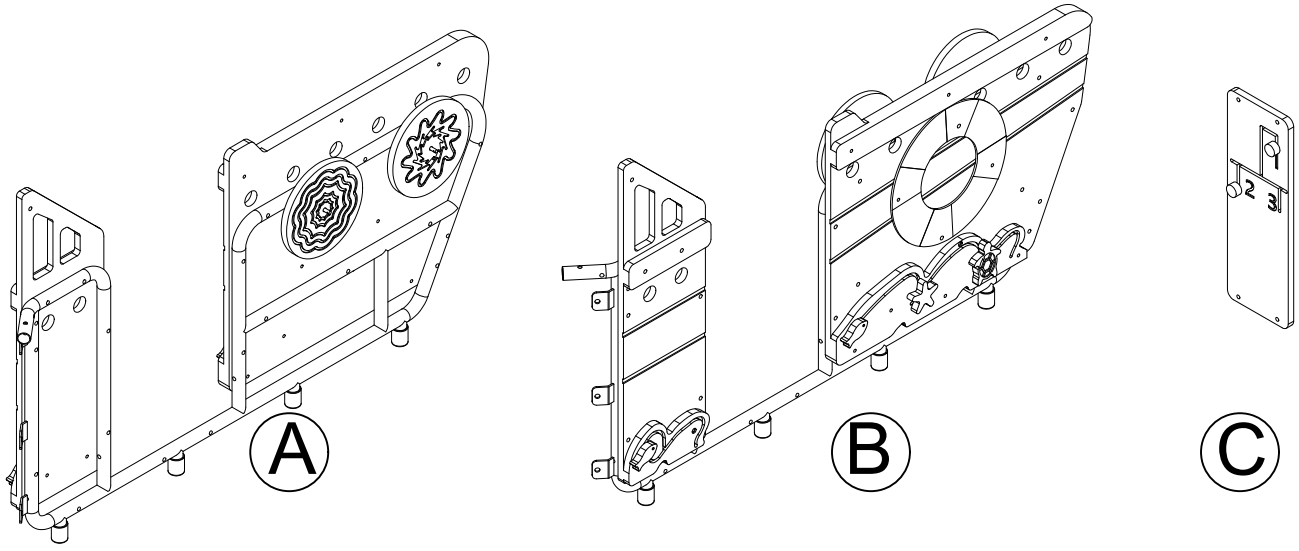


Site Layout



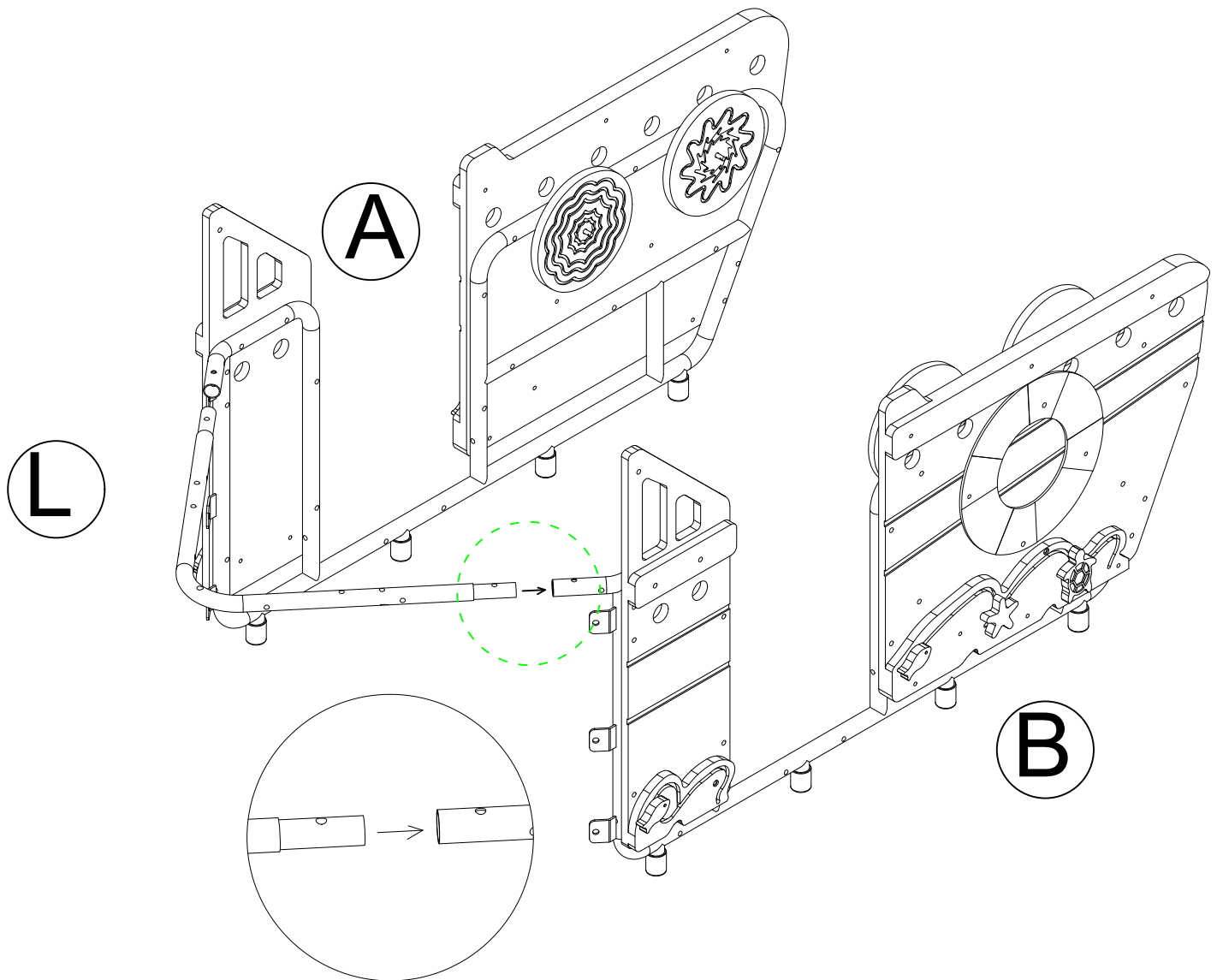
part list:



Installation steps:

Number	Name	Model	Quantity
--------	------	-------	----------

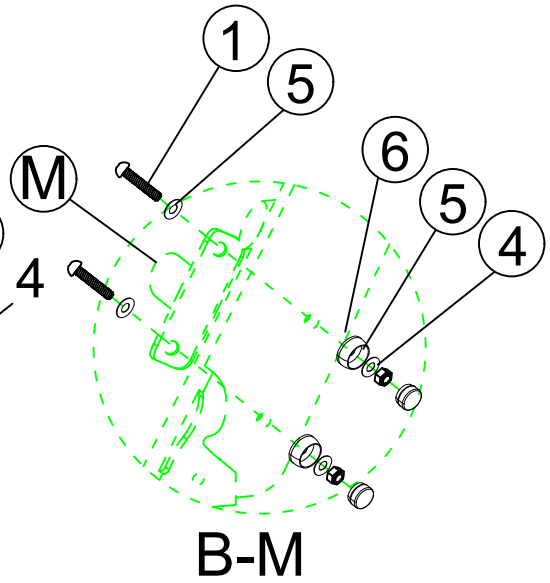
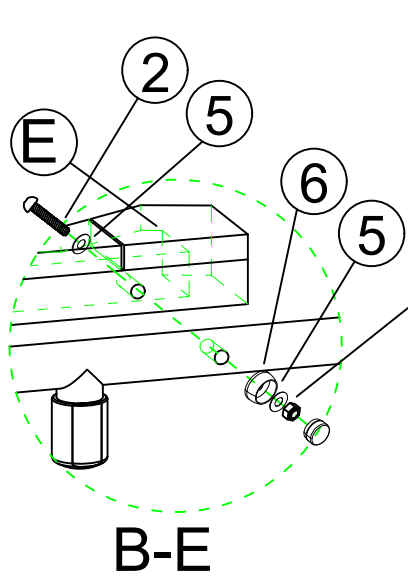
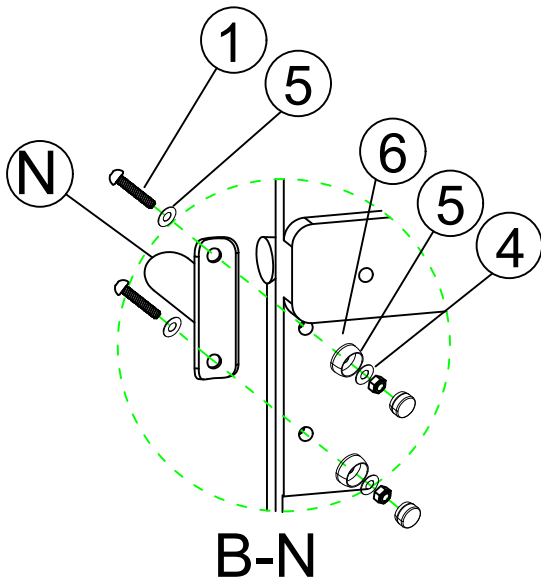
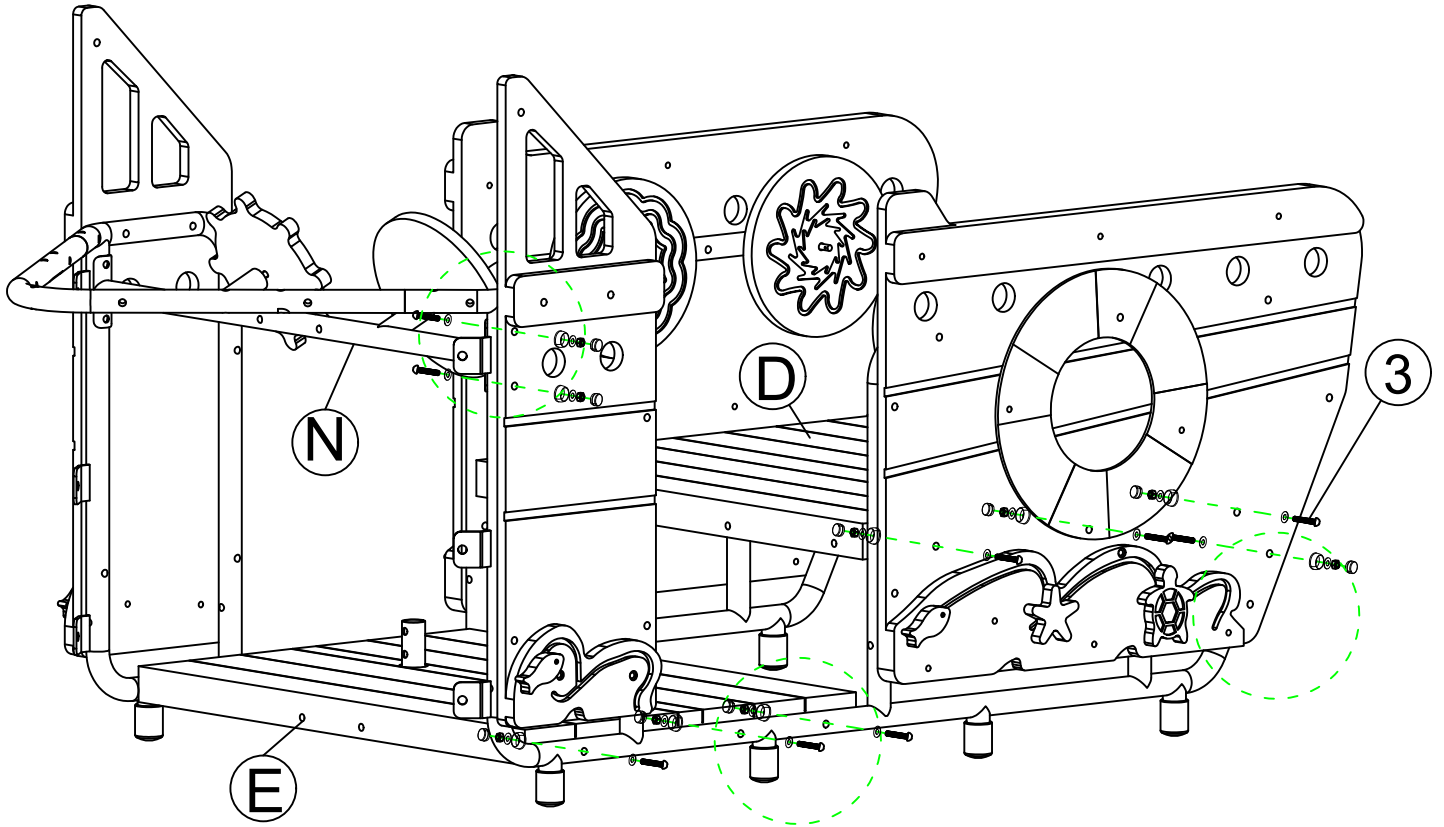
1: Insert both ends of Par L into Part A&B, do not fasten the screws.



Installation steps:

1: Install Part E/D/N/M in sequence with corresponding hardware.

Number	Name	Model	Quantity
1	TAMPER RESISTANT TORX-BOLT	M8*70	8
2	TAMPER RESISTANT TORX-BOLT	M8*80	6
3	TAMPER RESISTANT TORX-BOLT	M8*100	6
4	LOCK NUT	M8	20
5	FLAT WASHER	8.5/23.5*T1.5	40
6	PLASTIC CAP	φ34*M10	20

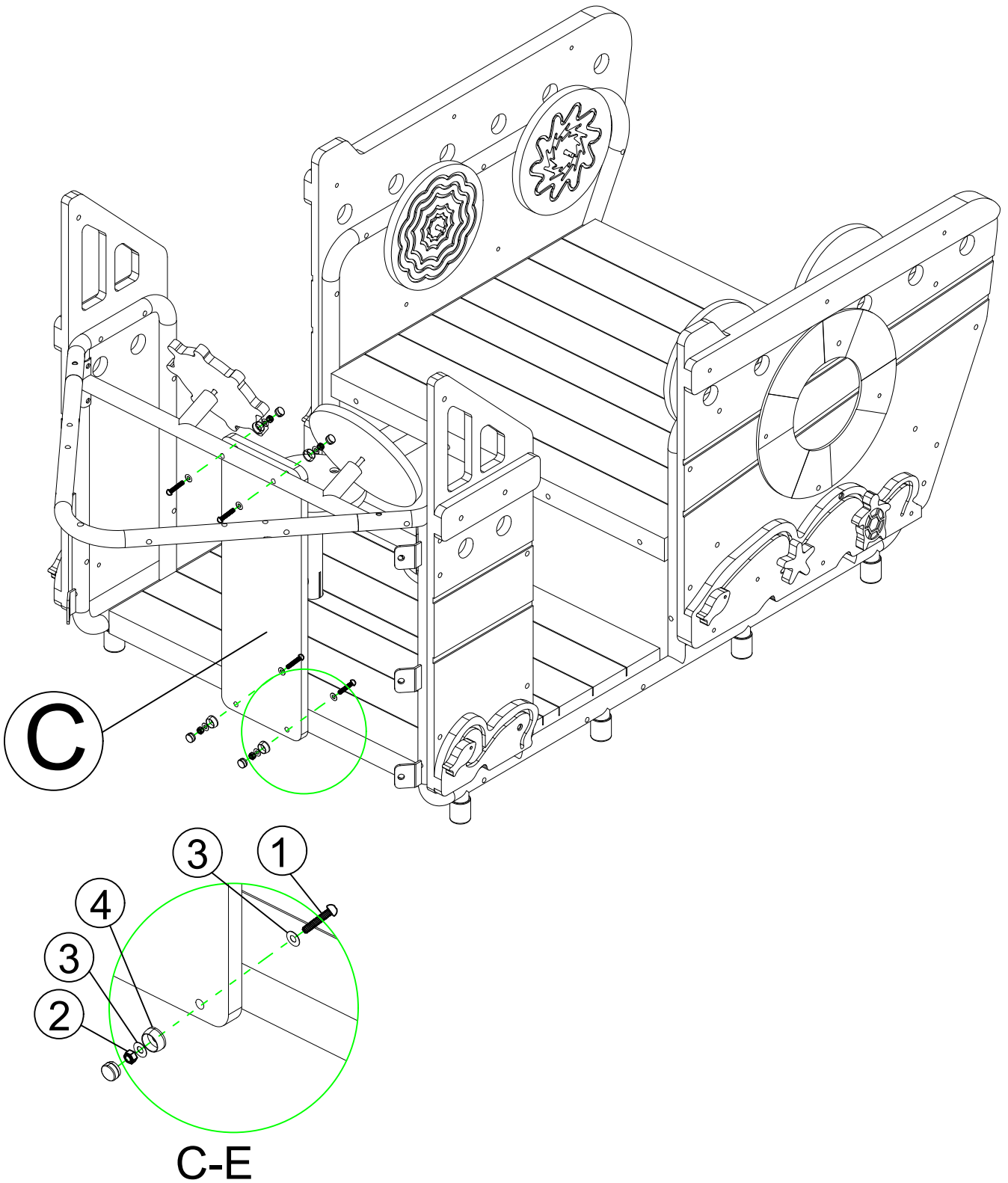


Installation steps:

1: Fix Part C to Part E.

YJ001370 Motor Skills - Boat

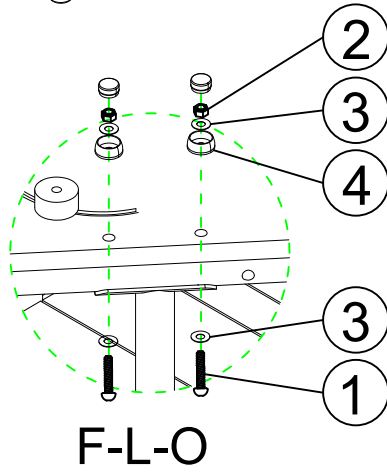
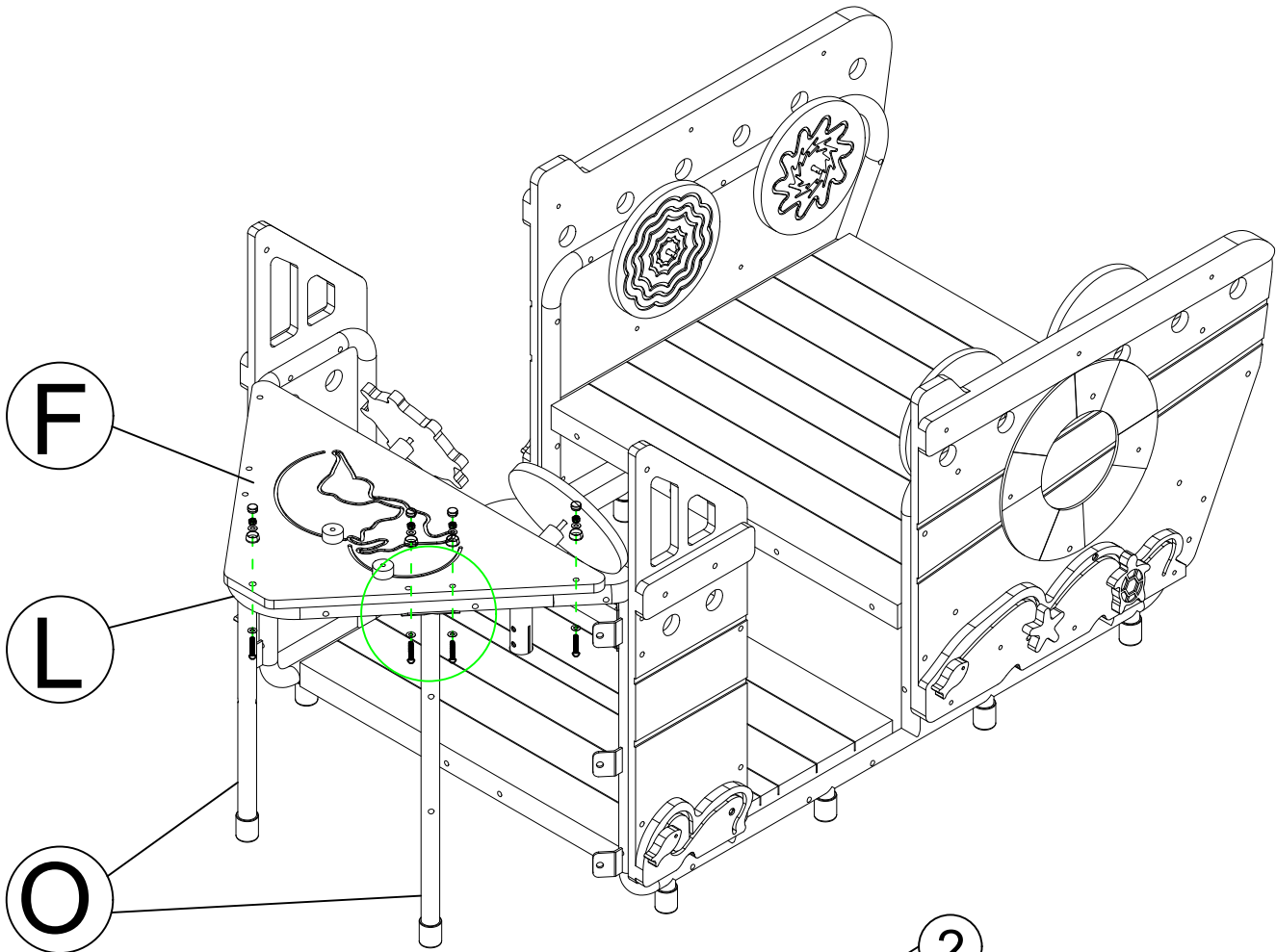
Number	Name	Model	Quantity
1	TAMPER RESISTANT TORX-BOLT	M8*65	4
2	LOCK NUT	M8	4
3	FLAT WASHER	8.5/23.5*T1.5	8
4	PLASTIC CAP	φ34*M10	4



Installation steps:

1: Fix Part F & O to Part L.

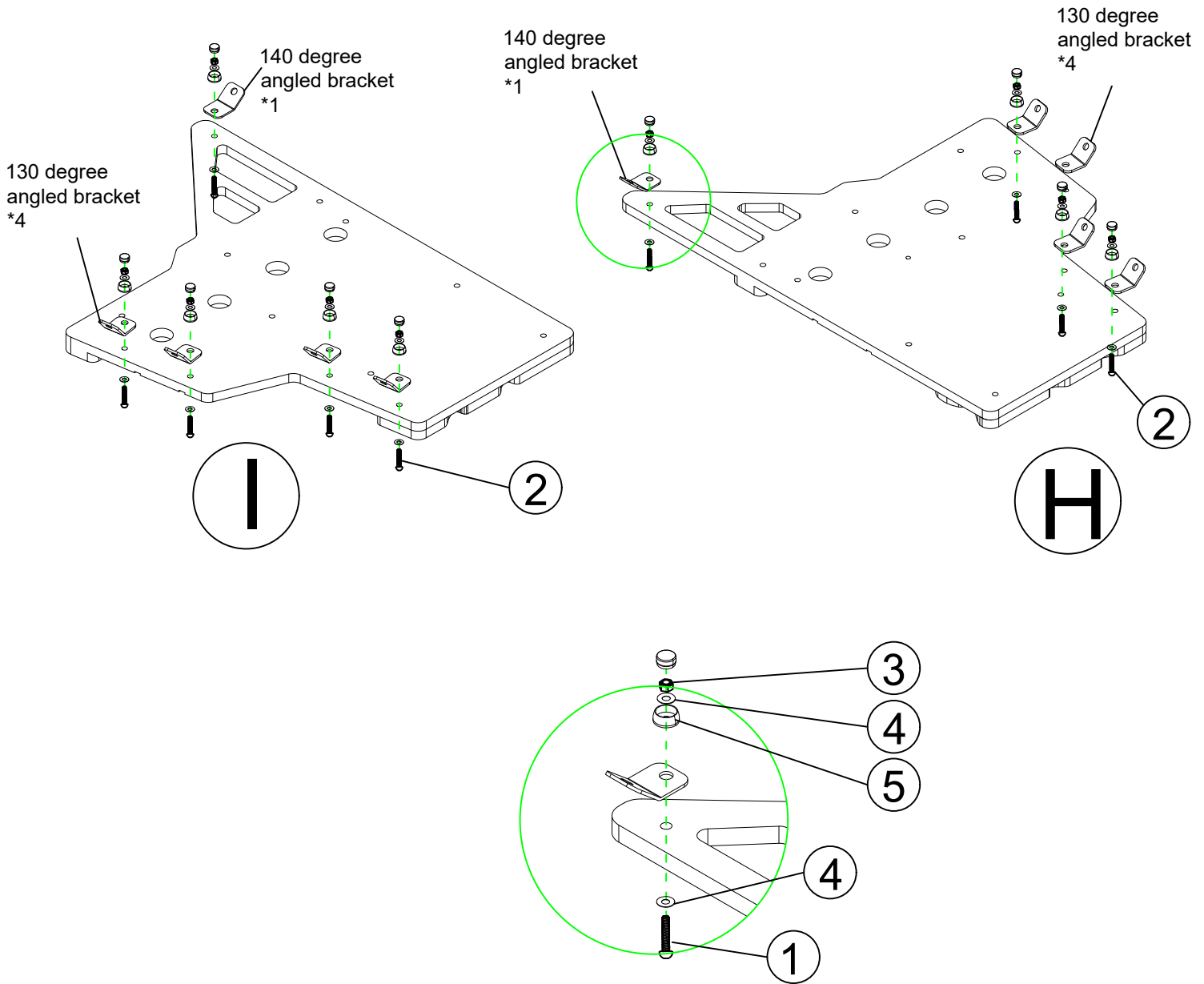
Number	Name	Model	Quantity
1	TAMPER RESISTANT TORX-BOLT	M8*70	7
2	LOCK NUT	M8	7
3	FLAT WASHER	8.5/23.5*T1.5	14
4	PLASTIC CAP	φ34*M10	7



Installation steps:

1: Fix the stainless steel angled brackets on part H&I. Please note that 2 x 140 degree angled brackets are fixed on both ends, and the remaining 8 x 130 degree angle brackets are fixed on other positions.

Number	Name	Model	Quantity
1	TAMPER RESISTANT TORX-BOLT	M8*40	8
2	TAMPER RESISTANT TORX-BOLT	M8*50	2
3	LOCK NUT	M8	10
4	FLAT WASHER	8.5/23.5*T1.5	20
5	PLASTIC CAP	φ34*M10	10
4	140 degree angled bracket		2
5	130 degree angled bracket		8

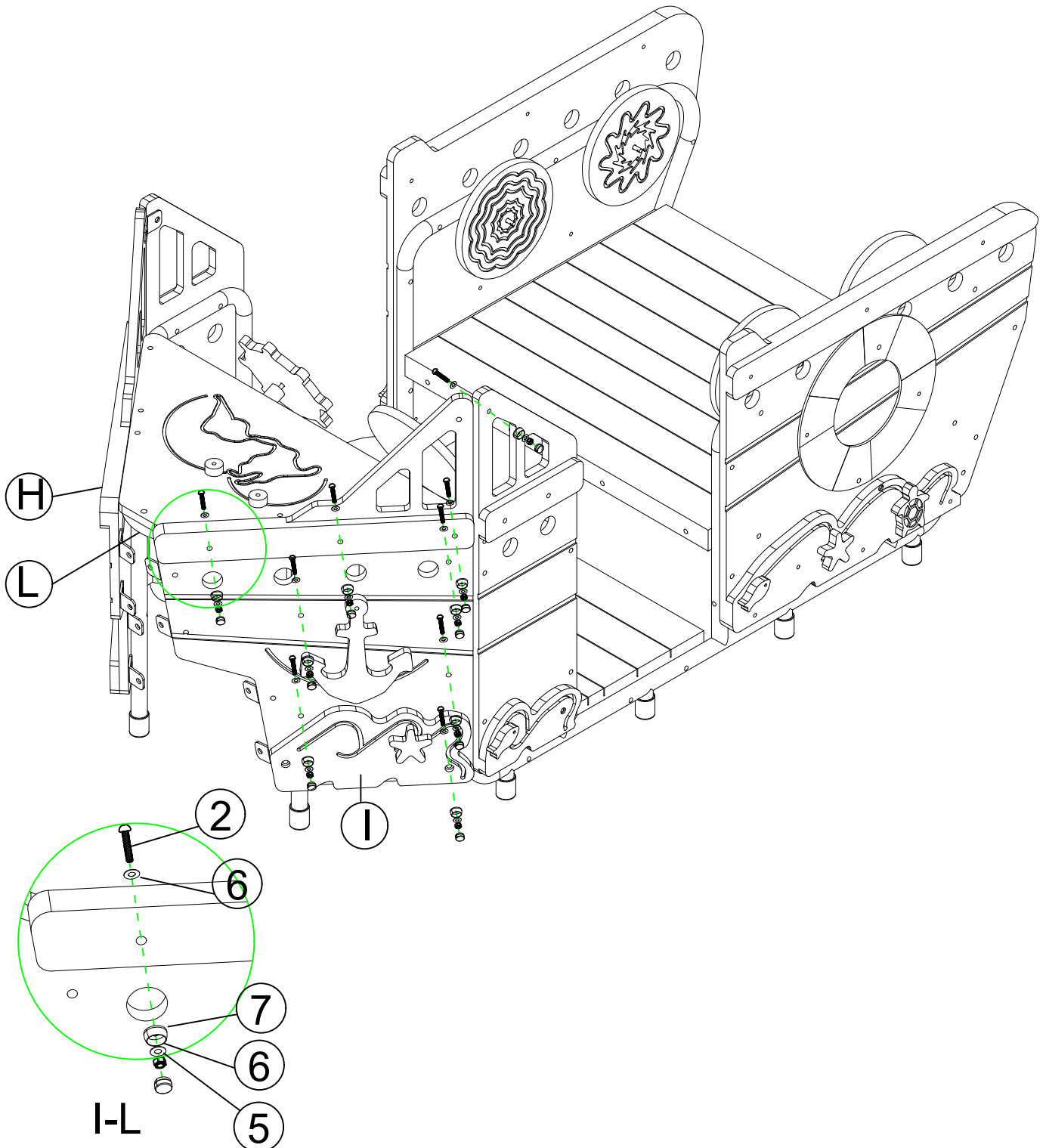


Installation steps:

1: Fix Part H&I to the Prow position with corresponding hardware.

YJ001370 Motor Skills - Boat

Number	Name	Model	Quantity
1	TAMPER RESISTANT TORX-BOLT	M8*40	6
2	TAMPER RESISTANT TORX-BOLT	M8*85	6
3	TAMPER RESISTANT TORX-BOLT	M8*65	4
4	TAMPER RESISTANT TORX-BOLT	M8*50	2
5	LOCK NUT	M8	18
6	FLAT WASHER	8.5/23.5*T1.5	36
7	PLASTIC CAP	φ34*M10	18

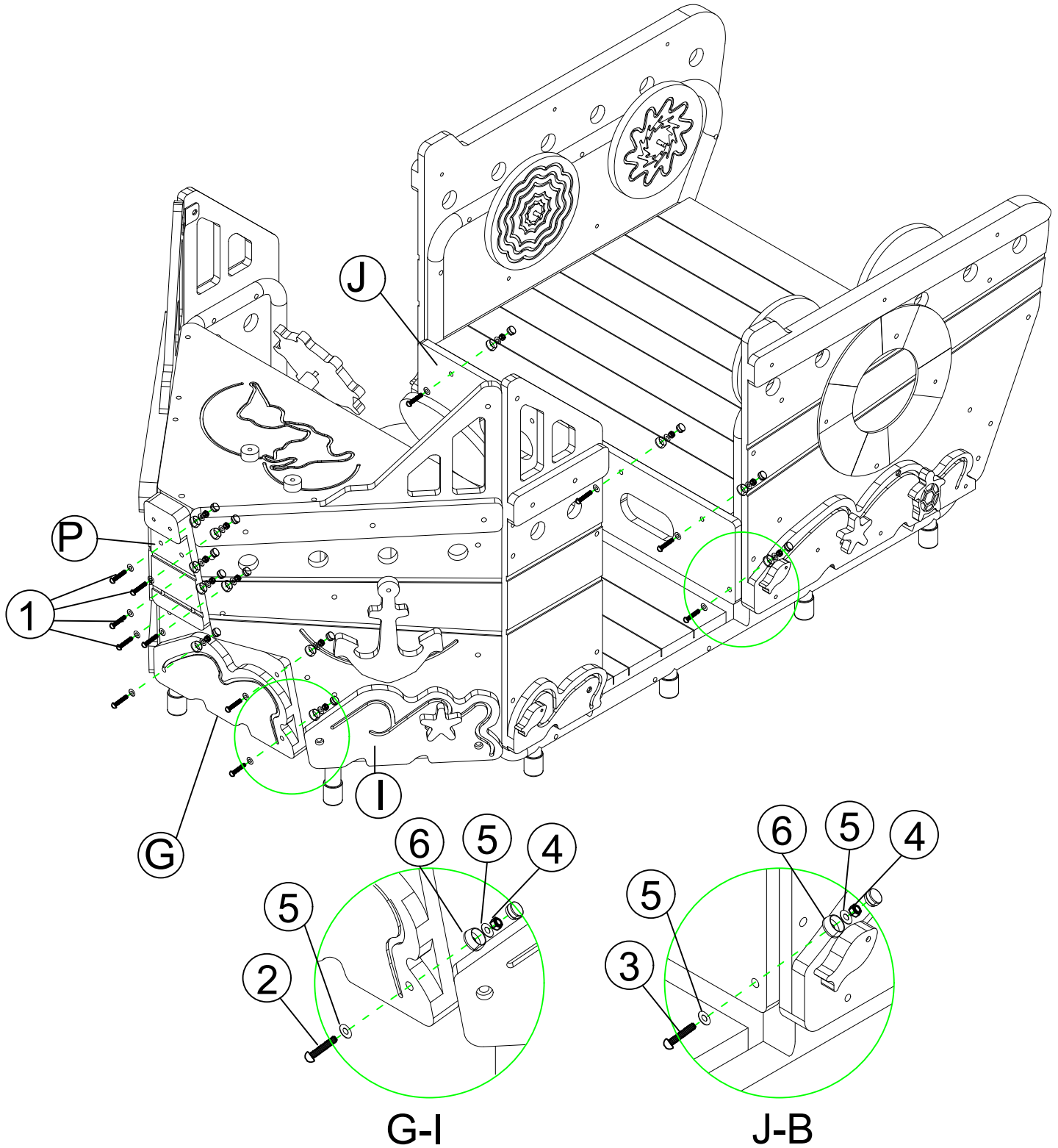


Installation steps:

1: Fix Part P to the Prow position and Part J on the front of seat.

YJ001370 Motor Skills - Boat

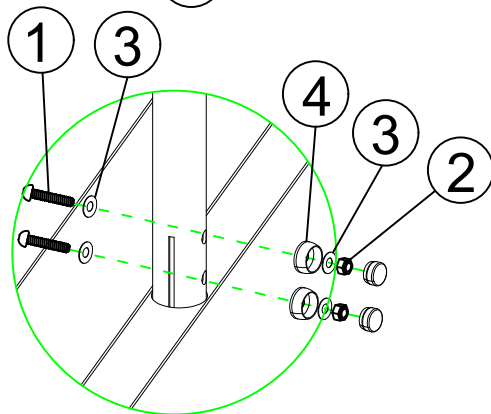
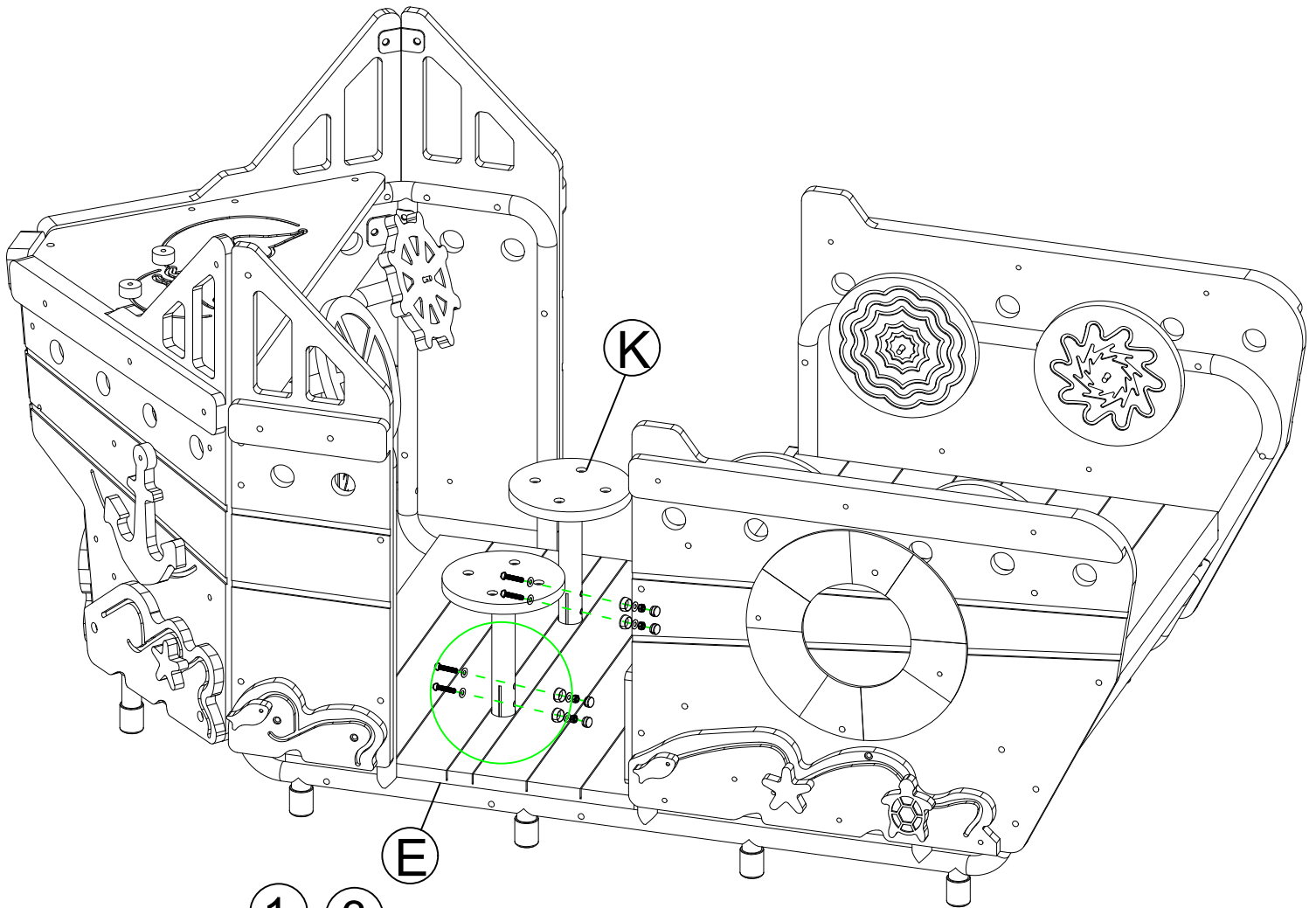
Number	Name	Model	Quantity
1	TAMPER RESISTANT TORX-BOLT	M8*40	6
2	TAMPER RESISTANT TORX-BOLT	M8*55	2
3	TAMPER RESISTANT TORX-BOLT	M8*65	6
4	LOCK NUT	M8	14
5	FLAT WASHER	8.5/23.5*T1.5	28
6	PLASTIC CAP	φ34*M10	14



Installation steps:

1: Fix Part K to Part E with corresponding hardware.

Number	Name	Model	Quantity
1	TAMPER RESISTANT TORX-BOLT	M8*55	4
2	LOCK NUT	M8	4
3	FLAT WASHER	8.5/23.5*T1.5	8
4	PLASTIC CAP	φ34*M10	4



E-K